

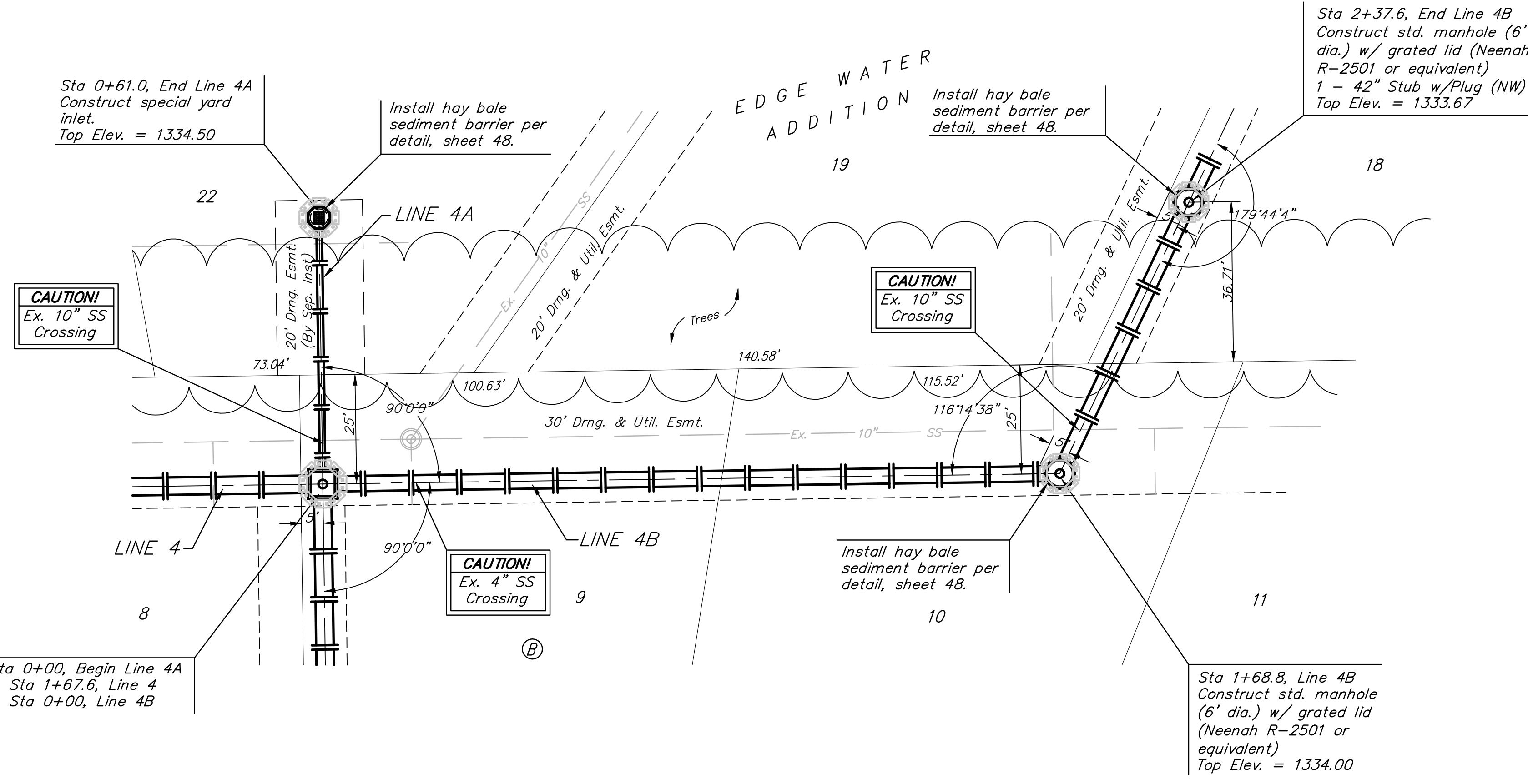
**BENCHMARK:**  
 BM #1: HOOVER AND 45TH ST. NORTH  
 - COW BENCHMARK AT NE CORNER OF  
 INTERSECTION, 10.20' SSE OF PP,  
 58.80' ESE OF PP ON NW CORNER,  
 85.50' NE OF GAS LINE MARKER,  
 59.00' NORTH OF GAS LINE MARKER,  
 28.50' EAST OF CENTERLINE, 14.50'  
 NORTH OF CENTERLINE.  
 ELEV. = 1335.29 (NGVD 29)

BM #2: Small RR spike in 3rd PP west  
 of Hoover St. on the north side of  
 45th St. N.  
 Elev. = 1337.68

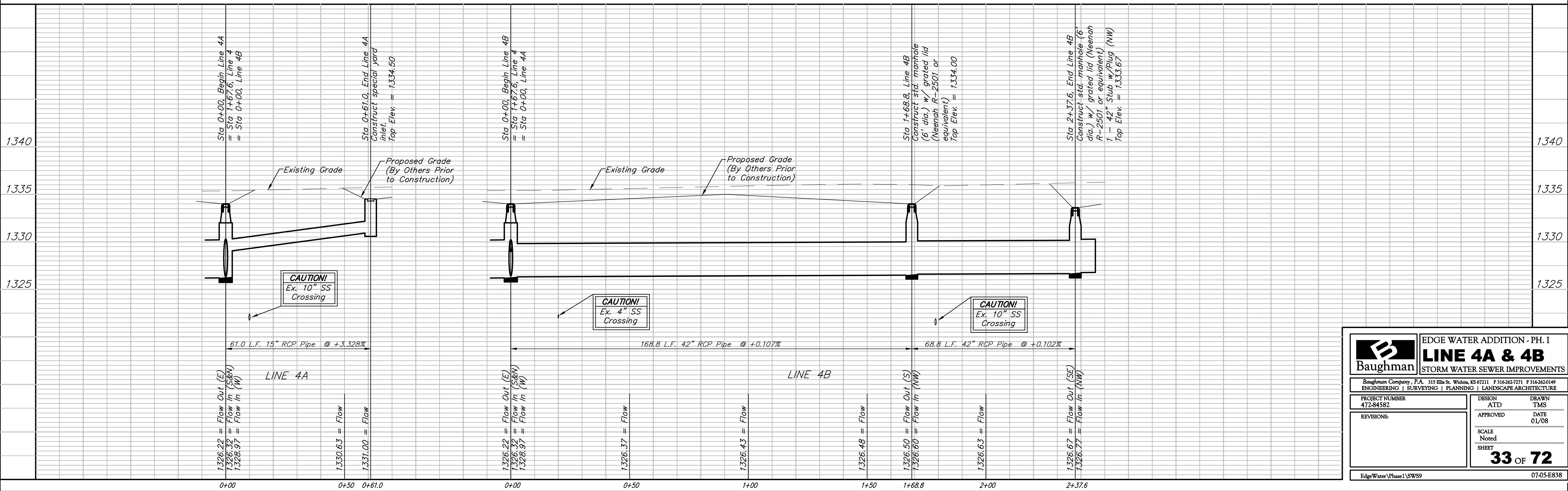
BM #3: Small RR spike in 2nd PP east  
 of NW Corner of SEC. 27, TWP. 26-S,  
 R-1-W. (North side of 45th St. N.,  
 west of Hoover St.)  
 Elev. = 1339.57

BM #4: 60d nail in PP at the SE  
 corner of exception on west side of  
 Hoover St., south of 45th St. N.  
 Elev. = 1335.26

Scale: 1" = 20' Horizontal  
 1" = 5' Vertical  
 • = Iron



Remove trees only as necessary  
 for storm sewer construction and  
 only with permission of Developer  
 or Baughman Co. Cost of  
 removal to be incidental to lump  
 sum bid item "Site Clearing &  
 Restoration".



	EDGE WATER ADDITION - PH. I	
	<b>LINE 4A &amp; 4B</b>	
STORM WATER SEWER IMPROVEMENTS		
<small>Baughman Company, P.A. 315 Ellis St. Wichita, KS 67211 P 316-262-7271 F 316-262-0149        ENGINEERING   SURVEYING   PLANNING   LANDSCAPE ARCHITECTURE</small>		
PROJECT NUMBER 472-84582	DESIGN ATD	DRAWN TMS
REVISIONS:	APPROVED	DATE 01/08
SCALE Noted		SHEET <b>33 OF 72</b>
<small>EdgeWater\Phase1\SW59</small>		<small>07-05-E838</small>