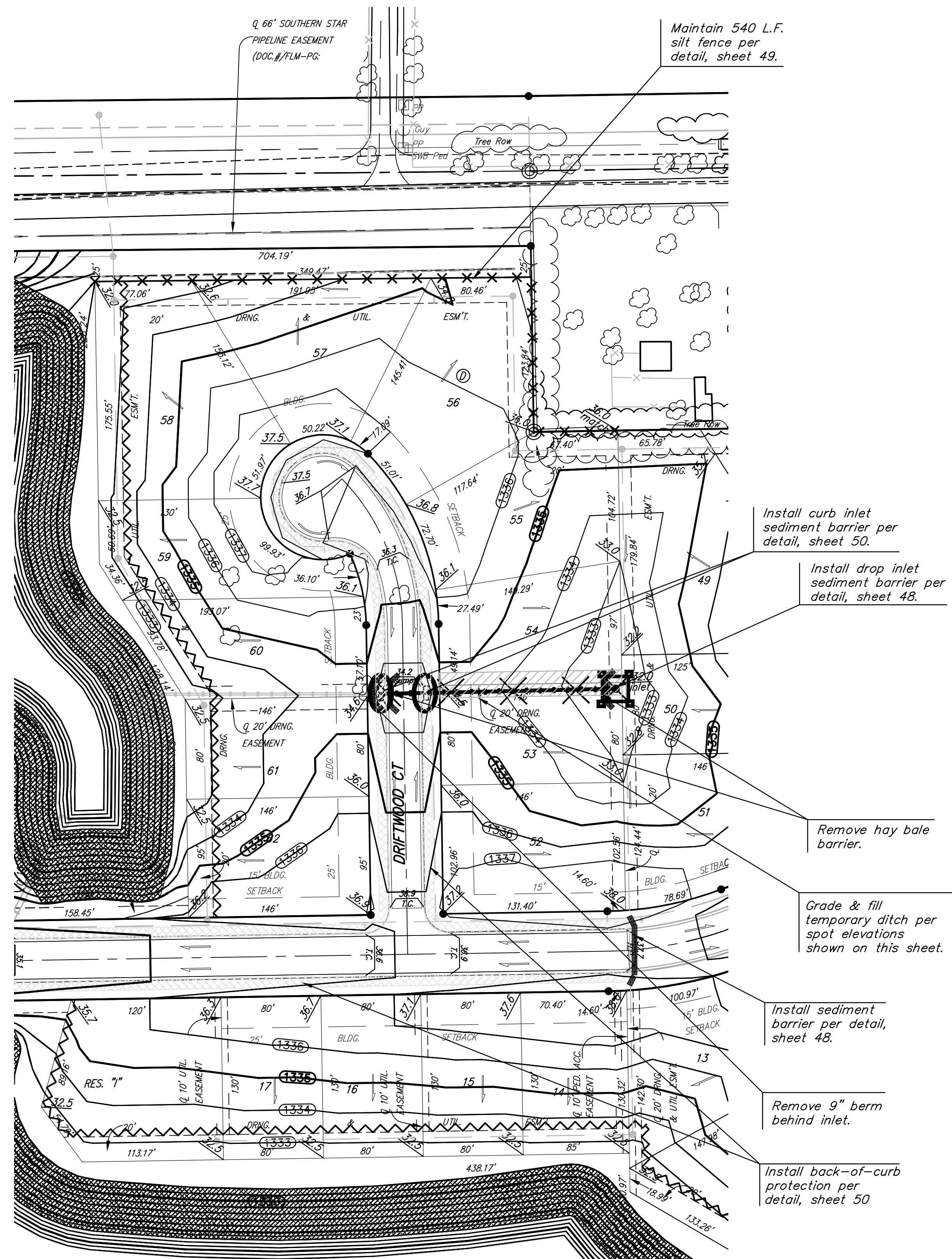


Maintain one construction entrance onto existing paved roadway per detail, sheet 50.

Maintain 540 L.F. silt fence per detail, sheet 49.



Install curb inlet sediment barrier per detail, sheet 50.

Install drop inlet sediment barrier per detail, sheet 48.

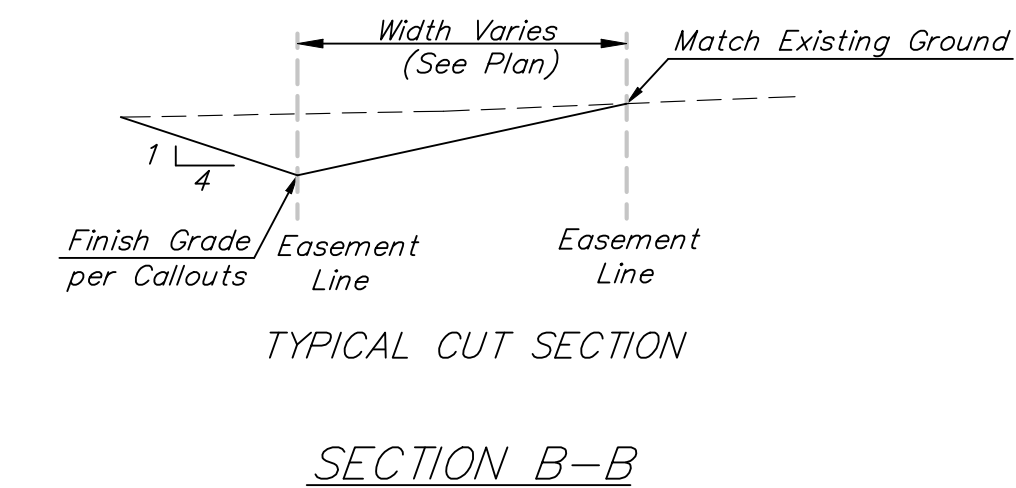
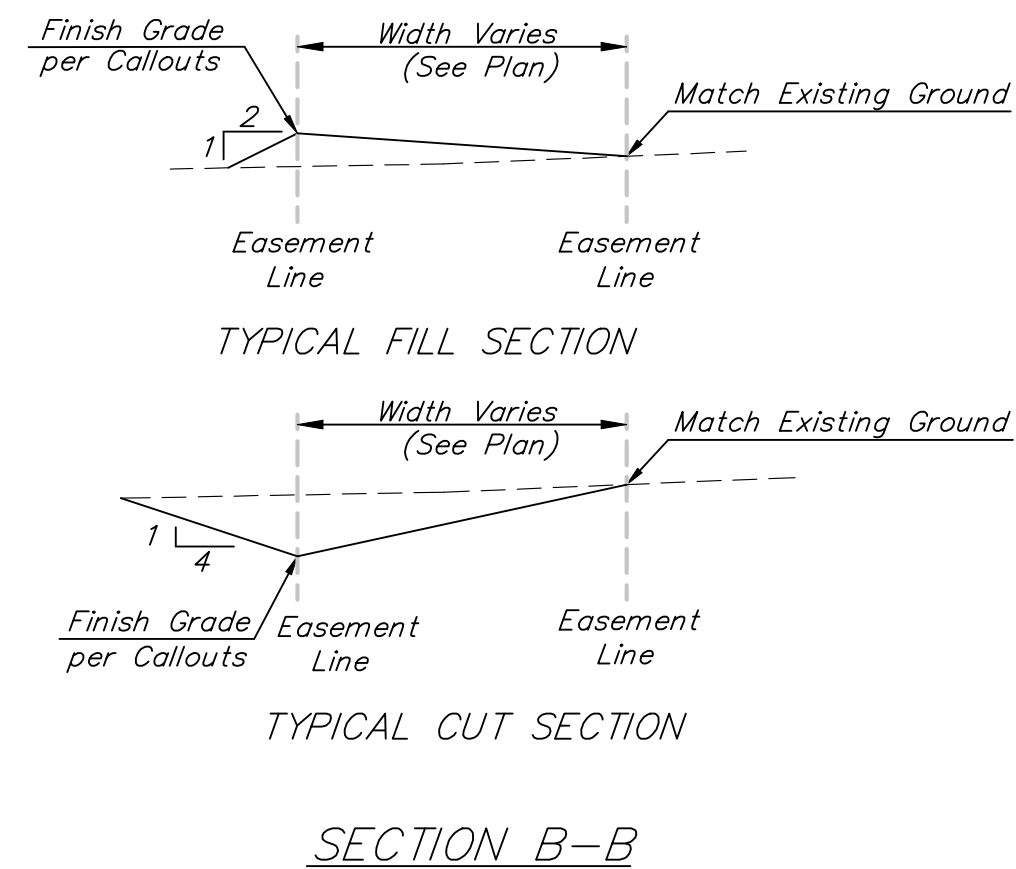
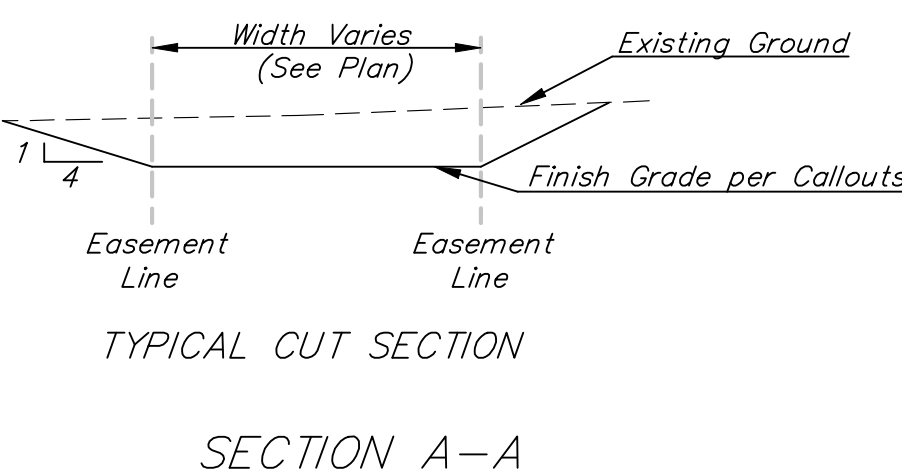
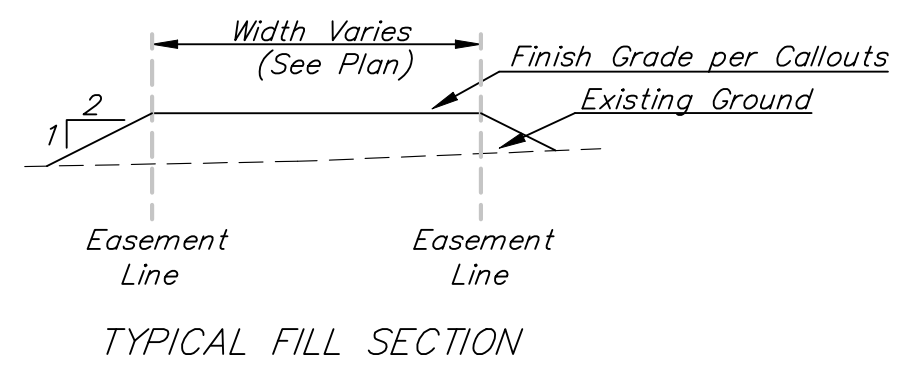
Remove hay bale barrier.

Grade & fill temporary ditch per spot elevations shown on this sheet.

Install sediment barrier per detail, sheet 48.

Remove 9" berm behind inlet.

Install back-of-curb protection per detail, sheet 50



= Easements To Be Graded

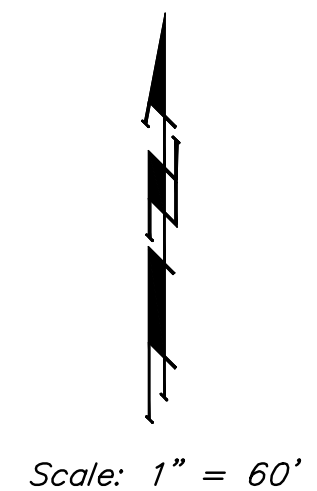
The contractor shall grade the easements as shown to the elevations given on the easement grading plan. All costs for grading shall be incidental to the Easement Grading Bid Item.

The contractor shall 'straight' grade the easements between the elevations given. Where a callout designates 'Match', the contractor will grade to the existing ground elevation.

All easements have been graded prior to construction with the mass grading plan, however, all easements shall be fine graded with this project after street & sws construction has been completed. All cost associated with the fine grading shall be included in the lump sum bid item "Easement Grading".

EROSION CONTROL PLAN LEGEND	
(Installation Details Found in the SWP2 Plan)	
	- DROP INLET PROTECTION
	- CURB INLET PROTECTION
	- DITCH CHECKS
	- SILT FENCING
	- CUT-OFF TRENCH
	- BACK OF CURB PROTECTION
	- EROSION CONTROL MAT
	- TEMPORARY DITCH
NO SCALE	

--- 185 --- Existing Grade  
 (185) Proposed Grade



	EDGE WATER ADD. - PH. I	
	EROSION CONTROL PLAN	
STREET IMPROVEMENTS		
Baughman Company, P.A. 315 Ellis St. Wichita, KS 67211 P 316-262-7271 F 316-262-0149		
ENGINEERING   SURVEYING   PLANNING   LANDSCAPE ARCHITECTURE		
PROJECT NUMBER 412-84582	DESIGN ATD	DRAWN TMS
REVISIONS:	APPROVED	DATE 01/08
	SCALE Noted	
	SHEET	
46 OF 72		
EdgeWater\StrECPlan4		07-05-E838