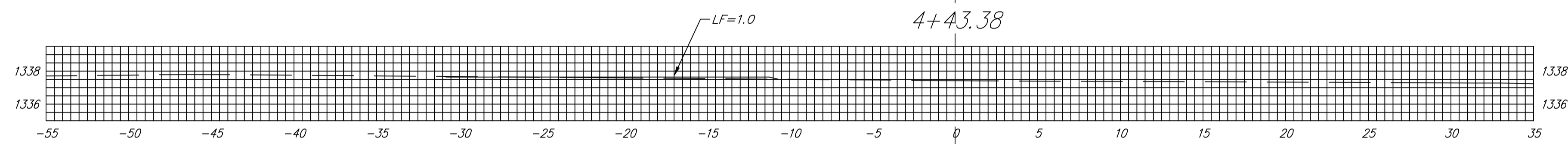
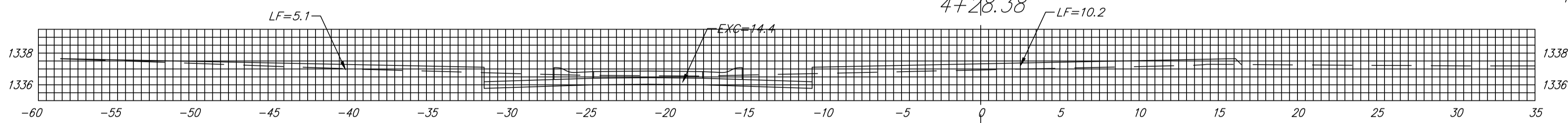


DRIFTWOOD CT

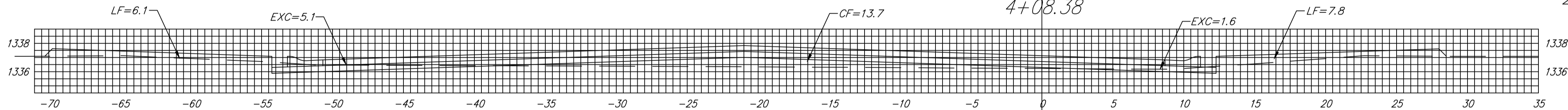
4+43.38



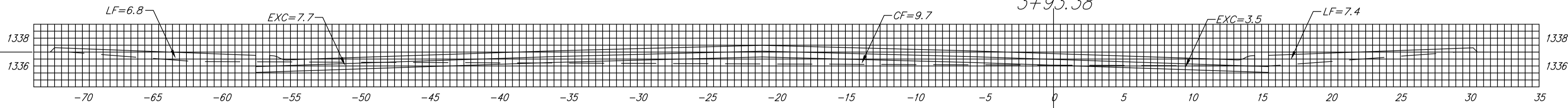
4+28.38



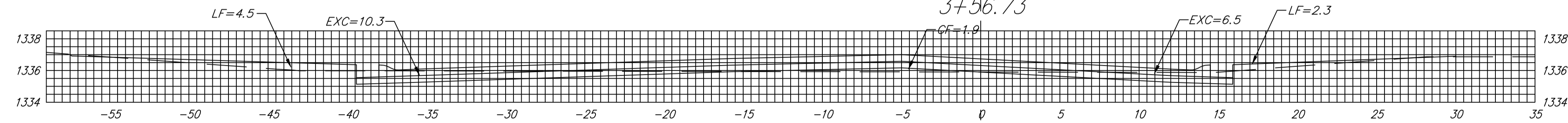
4+08.38



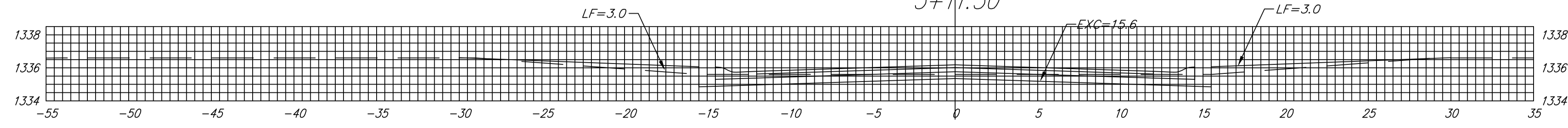
3+93.38



3+56.73



3+11.50



15.00' EXC = 4.0
LF = 4.5
CF = 0.0

20.00' EXC = 7.8
LF = 10.8
CF = 5.1

15.00' EXC = 5.0
LF = 7.8
CF = 6.5

25.00' EXC = 13.0
LF = 9.7
CF = 5.4

24.99' EXC = 15.0
LF = 5.9
CF = 8.8

Sheet Totals
Excavation = 44.8 C.Y.
Loose Fill = 38.7 C.Y.
Compacted Fill = 25.8 C.Y.

