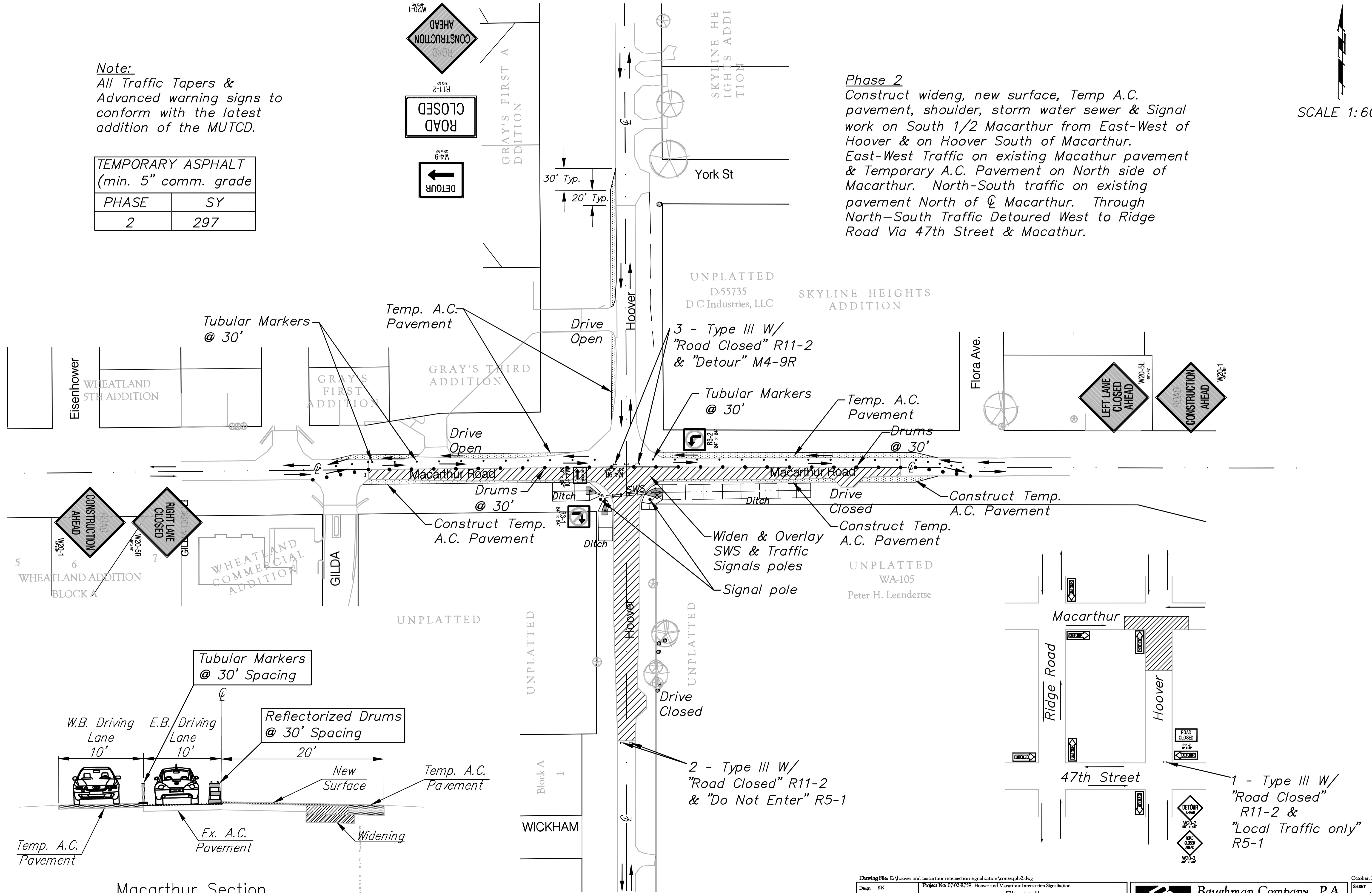


Note:
All Traffic Tapers & Advanced warning signs to conform with the latest addition of the MUTCD.

TEMPORARY ASPHALT (min. 5" comm. grade)	
PHASE	SY
2	297

Phase 2
Construct widening, new surface, Temp A.C. pavement, shoulder, storm water sewer & Signal work on South 1/2 Macarthur from East-West of Hoover & on Hoover South of Macarthur. East-West Traffic on existing Macarthur pavement & Temporary A.C. Pavement on North side of Macarthur. North-South traffic on existing pavement North of \bar{C} Macarthur. Through North-South Traffic Detoured West to Ridge Road Via 47th Street & Macarthur.

SCALE 1:60



Macarthur Section
Looking East