

**BENCHMARK:**  
 BM #1: " " CUT, TOP OF CURB, S. SIDE OF SUNDANCE AS DEDICATED IN SAVANNA AT CASTLE ROCK RANCH 7TH ADDITION, 25± W. OF THE WEST LINE OF THE SE1/4 OF SEC. 12, TWP. 27-S, R-2-E. ELEV. = 1347.33 NGVD29

BM #2: 60d NAIL IN HIGH LINE POLE, 30' SOUTH OF S1/4 COR., SEC. 12, TWP. 27-S, R-2-E. ELEV. = 1348.58 NGVD29 (PER COUNTY RECORD)

Curve #1L  
 Curve Data Based on Centerline  
 Rad. = 100' Delta = 9° 35' 39" Tangent = 8.39'  
 Arc = 16.74' L.C. = 16.73' Def/Ft. = 17.19385 Min.

Station	Arc	8' Lt.	8' Rt.	Defl.	T. Defl.
A	-	-	-	0'00"00"	0'00"00"
B	16.74'	18.06'	18.06'	4'47"49"	4'47"49"

Curve #1R  
 Curve Data Based on Centerline  
 Rad. = 100' Delta = 9° 35' 39" Tangent = 8.39'  
 Arc = 16.74' L.C. = 16.73' Def/Ft. = 17.19385 Min.

Station	Arc	8' Lt.	8' Rt.	Defl.	T. Defl.
C	-	-	-	0'00"00"	0'00"00"
D	16.74'	18.06'	18.06'	4'47"49"	4'47"49"

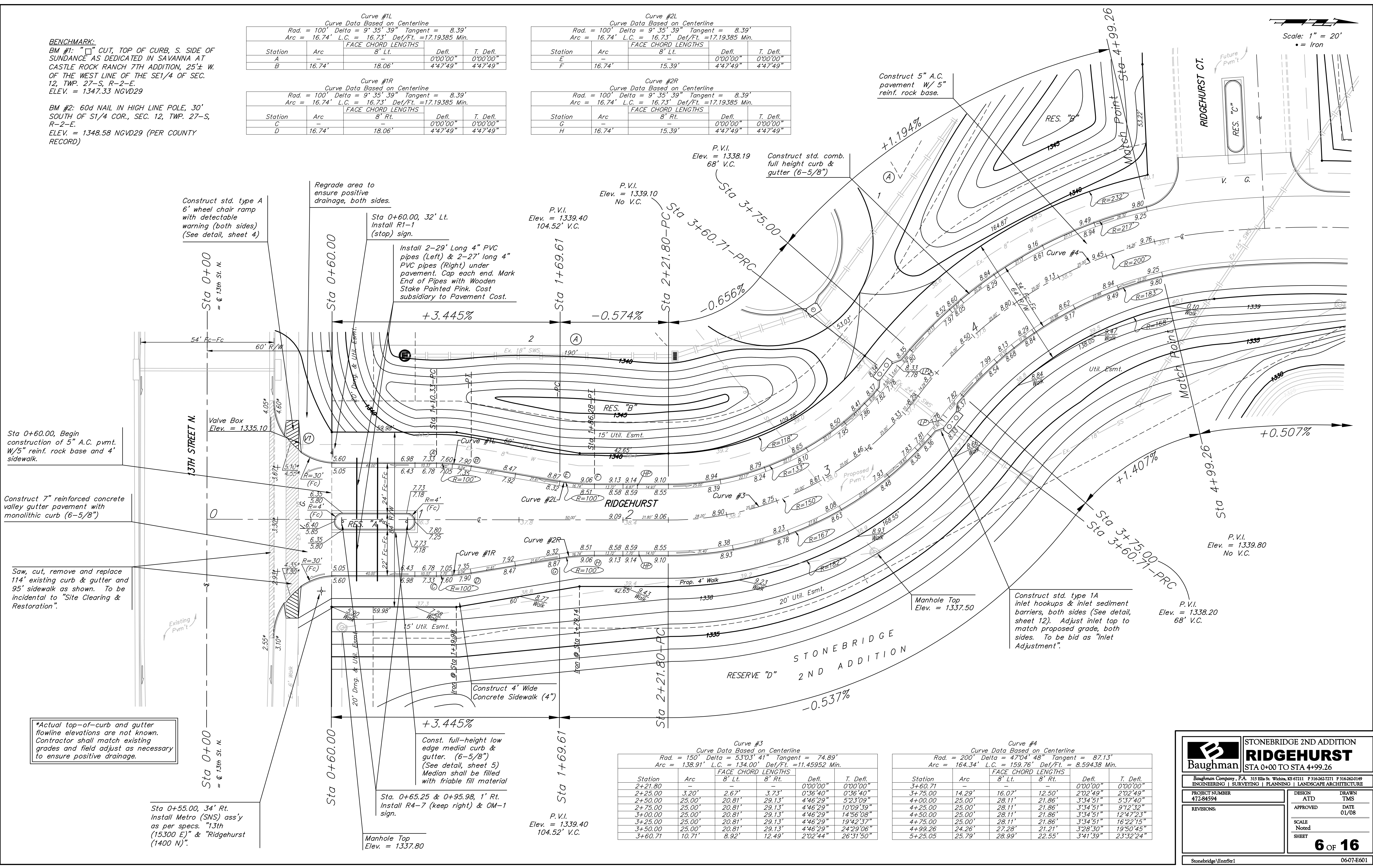
Curve #2L  
 Curve Data Based on Centerline  
 Rad. = 100' Delta = 9° 35' 39" Tangent = 8.39'  
 Arc = 16.74' L.C. = 16.73' Def/Ft. = 17.19385 Min.

Station	Arc	8' Lt.	8' Rt.	Defl.	T. Defl.
E	-	-	-	0'00"00"	0'00"00"
F	16.74'	15.39'	15.39'	4'47"49"	4'47"49"

Curve #2R  
 Curve Data Based on Centerline  
 Rad. = 100' Delta = 9° 35' 39" Tangent = 8.39'  
 Arc = 16.74' L.C. = 16.73' Def/Ft. = 17.19385 Min.

Station	Arc	8' Lt.	8' Rt.	Defl.	T. Defl.
G	-	-	-	0'00"00"	0'00"00"
H	16.74'	15.39'	15.39'	4'47"49"	4'47"49"

Scale: 1" = 20'  
 • = Iron



Construct std. type A 6' wheel chair ramp with detectable warning (both sides) (See detail, sheet 4)

Regrade area to ensure positive drainage, both sides.

Sta 0+60.00, 32' Lt. Install R1-1 (stop) sign.  
 Install 2-29' Long 4" PVC pipes (Left) & 2-27' long 4" PVC pipes (Right) under pavement. Cap each end. Mark End of Pipes with Wooden Stake Painted Pink. Cost subsidiary to Pavement Cost.

P.V.I. Elev. = 1339.40  
 104.52' V.C.

P.V.I. Elev. = 1338.19  
 68' V.C. Construct std. comb. full height curb & gutter (6-5/8")

Construct 5" A.C. pavement W/ 5" reinf. rock base.

Sta 0+60.00, Begin construction of 5" A.C. pvmt. W/5" reinf. rock base and 4' sidewalk.

Valve Box Elev. = 1335.10

Construct 7" reinforced concrete valley gutter pavement with monolithic curb (6-5/8")

Saw, cut, remove and replace 114' existing curb & gutter and 95' sidewalk as shown. To be incidental to "Site Clearing & Restoration".

\*Actual top-of-curb and gutter flowline elevations are not known. Contractor shall match existing grades and field adjust as necessary to ensure positive drainage.

Sta 0+55.00, 34' Rt. Install Metro (SNS) ass'y as per specs. "13th (15300 E)" & "Ridgehurst (1400 N)".

Sta. 0+65.25 & 0+95.98, 1' Rt. Install R4-7 (keep right) & OM-1 sign.

Manhole Top Elev. = 1337.80

P.V.I. Elev. = 1339.40  
 104.52' V.C.

Manhole Top Elev. = 1337.50

Construct std. type 1A inlet hookups & inlet sediment barriers, both sides (See detail, sheet 12). Adjust inlet top to match proposed grade, both sides. To be bid as "Inlet Adjustment".

P.V.I. Elev. = 1339.80  
 No V.C.

P.V.I. Elev. = 1338.20  
 68' V.C.

Curve #3  
 Curve Data Based on Centerline  
 Rad. = 150' Delta = 53°03'41" Tangent = 74.89'  
 Arc = 138.91' L.C. = 134.00' Def/Ft. = 11.45952 Min.

Station	Arc	8' Lt.	8' Rt.	Defl.	T. Defl.
2+21.80	-	-	-	0'00"00"	0'00"00"
2+25.00	3.20'	2.67'	3.73'	0'36"40"	0'36"40"
2+50.00	25.00'	20.81'	29.13'	4'46"29"	5'23"09"
2+75.00	25.00'	20.81'	29.13'	4'46"29"	10'09"39"
3+00.00	25.00'	20.81'	29.13'	4'46"29"	14'56"08"
3+25.00	25.00'	20.81'	29.13'	4'46"29"	19'42"37"
3+50.00	25.00'	20.81'	29.13'	4'46"29"	24'29"06"
3+60.71	10.71'	8.92'	12.49'	2'02"44"	26'31"50"

Curve #4  
 Curve Data Based on Centerline  
 Rad. = 200' Delta = 47°04'48" Tangent = 87.13'  
 Arc = 164.34' L.C. = 159.76' Def/Ft. = 8.59438 Min.

Station	Arc	8' Lt.	8' Rt.	Defl.	T. Defl.
3+60.71	-	-	-	0'00"00"	0'00"00"
3+75.00	14.29'	16.07'	12.50'	2'02"49"	2'02"49"
4+00.00	25.00'	28.11'	21.86'	3'34"51"	5'37"40"
4+25.00	25.00'	28.11'	21.86'	3'34"51"	9'12"32"
4+50.00	25.00'	28.11'	21.86'	3'34"51"	12'47"23"
4+75.00	25.00'	28.11'	21.86'	3'34"51"	16'22"15"
4+99.26	24.26'	27.28'	21.21'	3'28"30"	19'50"45"
5+25.05	25.79'	28.99'	22.55'	3'41"39"	23'32"24"

**STONEBRIDGE 2ND ADDITION**  
**RIDGEHURST**  
 STA 0+00 TO STA 4+99.26

Baughman Company, P.A. 315 Ellis St. Wichita, KS 67211 F3162627271 F3162620149  
 ENGINEERING | SURVEYING | PLANNING | LANDSCAPE ARCHITECTURE

PROJECT NUMBER: 412-84594  
 DESIGN: ATD  
 DRAWN: TMS

APPROVED: [Signature]  
 DATE: 01/08

SCALE: NOTED  
 SHEET: 6 OF 16

Stonebridge\EntrSri 0607-E601