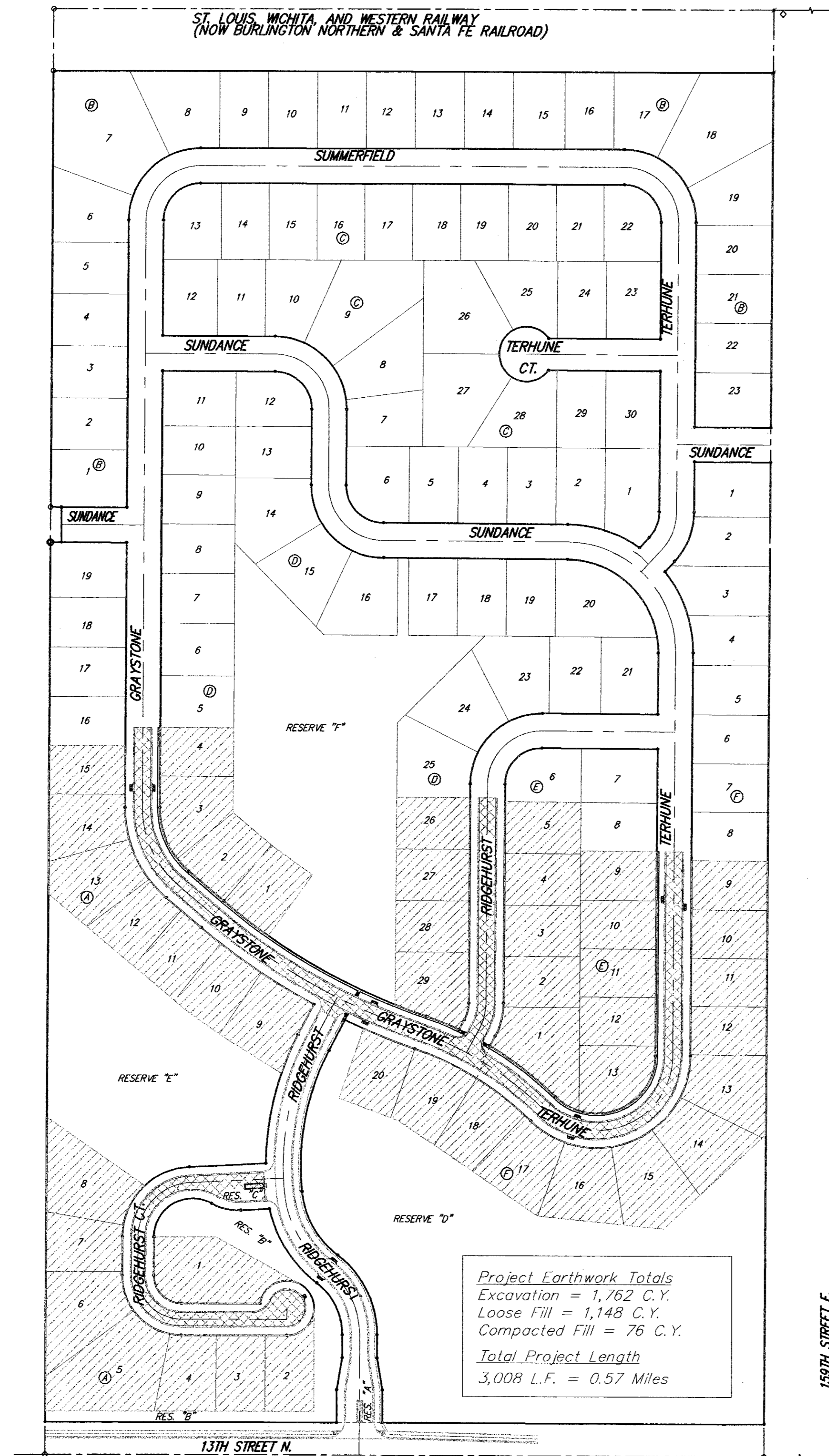


GENERAL NOTES:

- Contractor will be required to provide notice to utility companies a minimum of forty-eight (48) hours prior to any excavation, as follows:
 Kansas One-Call 687-2470
 The Contractor must notify the following in case of an emergency:
 Cox Communications 262-4270
 Kansas Gas Service 1-888-482-4950
 Westar Energy 383-8650
 Aquila Energy 1-800-303-0357
 AT&T 268-2245
 City of Wichita Water Dept. 268-4563
 City of Wichita Sewer Maint. 268-4024
 City of Wichita Storm Sewer Maint. 268-4090
 City of Wichita Traffic Maint. 268-4034
 Conoco Phillips Pipeline Co. 1-877-267-2290
 Southern Star Pipeline Co. 529-6600
 Kinder-Morgan Pipeline Co. 1-888-844-5658
- Utility service lines, poles, valve boxes, meters, and etcetera are to be adjusted as necessary by others prior to construction unless the plans specifically call for their adjustment by the Contractor or unless the plans specifically identify a utility to be adjusted by its owner during construction. Existing utilities and their location, as shown on the plans, represent the best information obtainable for design. The Contractor will be required to work around existing utilities within the right-of-way which do not conflict with proposed construction.
- Rubble from the removal of miscellaneous structures and excess excavation which is to be wasted shall be disposed of on sites to be provided by the Contractor. These sites shall be approved by the Engineer as to suitability, appearance and site location. Locations, in the opinion of the Engineer, that will leave an unsightly appearance will not be approved. All disposal sites must be approved by the Kansas Department of Health and Environment. Material either stockpiled or disposed of in a flood plain would require a Kansas State Board of Agriculture permit. Any material dumped in waters of the United States or wetlands is subject to U.S. Corps. of Engineers permitting regulations. Any material buried or stockpiled beyond approved construction limits would require additional archaeological investigations unless buried in a previously approved borrow location.
- Trees and shrubs in public right-of-way which are in direct conflict with proposed new construction shall be removed by the Contractor with the Engineer's approval. Trees and shrubs which are not in direct conflict with proposed new construction shall be saved and protected from damage.
- The Contractor shall give all property owners and/or tenants of developed property abutting the construction of this project a minimum of ten (10) days notice prior to start of construction.
- The Contractor shall be responsible for preserving property irons. The Contractor will be required to re-establish any property irons which are damaged or destroyed by his construction operations. Such irons shall be re-established by a licensed land surveyor in accordance with state laws.
- All existing and proposed erosion control measures including silt fencing, erosion control mat, straw bales, inlet barriers, and const. entrance shall be maintained throughout construction by the contractor and until project is accepted by the City of Wichita. The on-site engineer shall complete weekly reports on the status of erosion control measures. The contractor shall be required to comply with maintenance and/or replacement of erosion control measures as determined by the on-site engineer until project is accepted by City of Wichita. Maintenance and/or replacement of erosion control measures to be paid by L.S. bid item "Site Clearing & Restoration".
- All excess excavation shall remain on-site and shall be stockpiled or spread at a location determined by the engineer.
- Limits of earthwork shall match existing ground elevations at the right-of-way line unless otherwise noted on the plans with a new finished grade elevation. Site has been mass graded prior to construction with +/- 0.2' tolerance within street rights-of-way and +/- 0.3' tolerance outside street rights-of-way. No as built available at time of plan production, contractor shall bid dirt work accordingly.
- All areas disturbed during construction shall be seeded at 300 lbs./acre with Rye Grass immediately following construction in that area. Contractor shall prepare ground per City Specifications.
- The developer for this project is FLKS Land Development, and the contact person is Steve Barrett (316) 641-3268.



Benefit District: Proposed Streets:

STREET PAVING FOR GRAYSTONE

to serve

STONEBRIDGE 2ND ADD. - PH. I

Graystone, from the north line of Lot 4, Block D, south and east to the east line of Lot 19, Block F.
 Terhune from the west line of Lot 18, Block F, east and north to the north line of Lot 9, Block E.
 Ridgehurst from the north line of Graystone, north to the north line of Lot 5, Block E.
 Ridgehurst Ct. from the west line of Ridgehurst, west, south and east to and including the cul-de-sac.

CITY OF WICHITA, KANSAS

James L. Armour, P.E. City Engineer

Project Number
472-84591
O.C.A. Number
766165

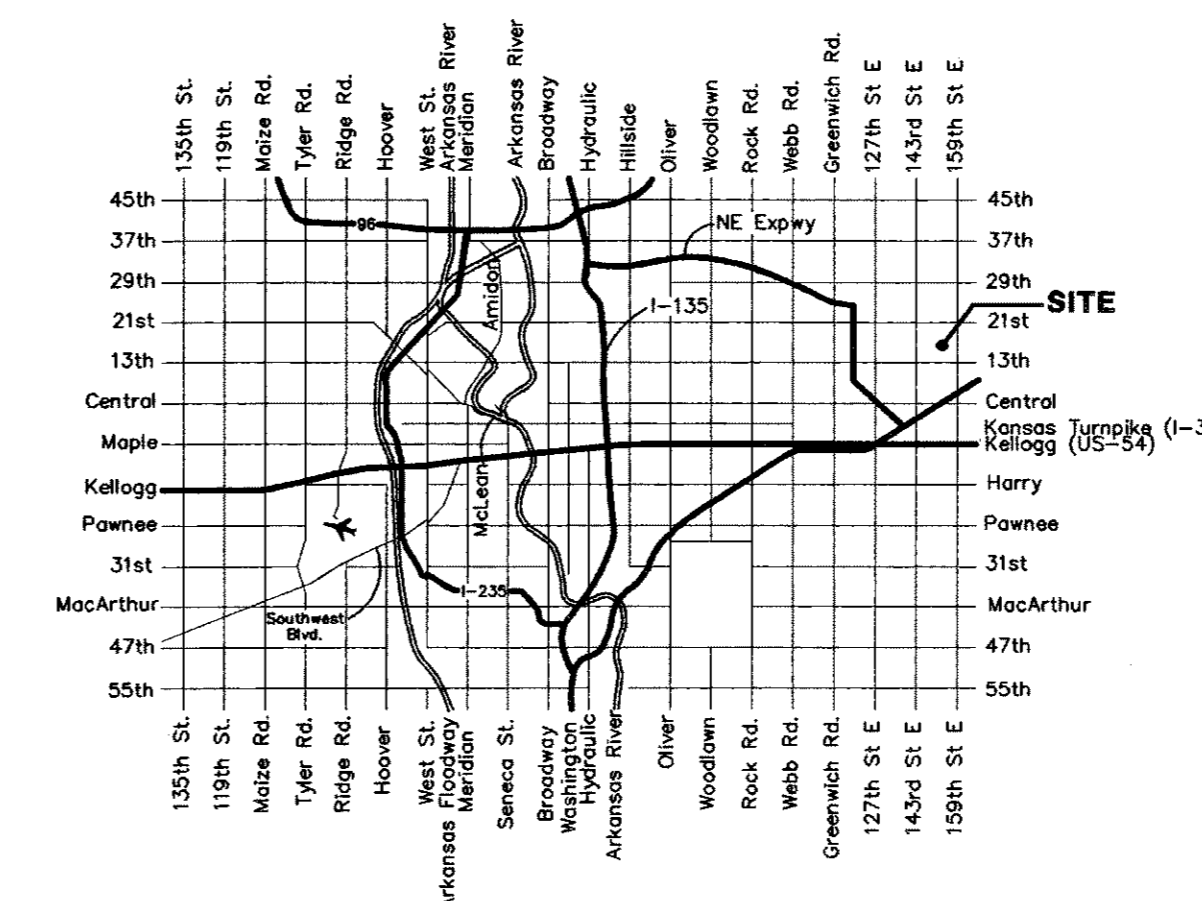
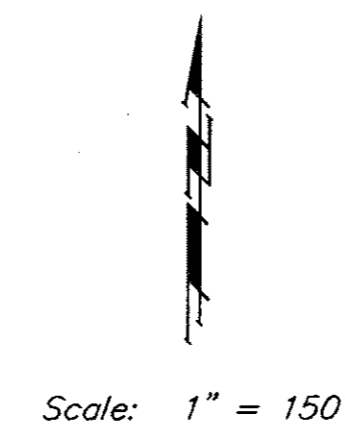
Benchmarks

BM #1: " " CUT, TOP OF CURB, S. SIDE OF SUNDANCE AS DEDICATED IN SAVANNA AT CASTLE ROCK RANCH 7TH ADDITION, 25'± W. OF THE WEST LINE OF THE SE1/4 OF SEC. 12, TWP. 27-S, R-2-E.
ELEV. = 1347.33 NGVD29

BM #2: 60d NAIL IN HIGH LINE POLE, 30' SOUTH OF S1/4 COR., SEC. 12, TWP. 27-S, R-2-E.
ELEV. = 1348.58 NGVD29 (PER COUNTY RECORD)

Sheet Index

Title Sheet	1
35' Pavement Detail	2
29' Pavement Detail	3
Sign Detail	4
Miscellaneous Details	5
Entrance Detail	6
Handrail Details	7
Graystone/Terhune	8-11
Ridgehurst	12
Ridgehurst Ct.	13-14
Erosion Control Plan	15
Erosion Control BMP Details	16-19
Coordinate Sheet	20
Street X-Sections	21-26
Copy of Plat	27



Vicinity Map



Baughman Company, P.A. 315 Ellis St. Wichita, KS 67211 P 316-262-7271 F 316-262-0145
 ENGINEERING | SURVEYING | PLANNING | LANDSCAPE ARCHITECTURE

