

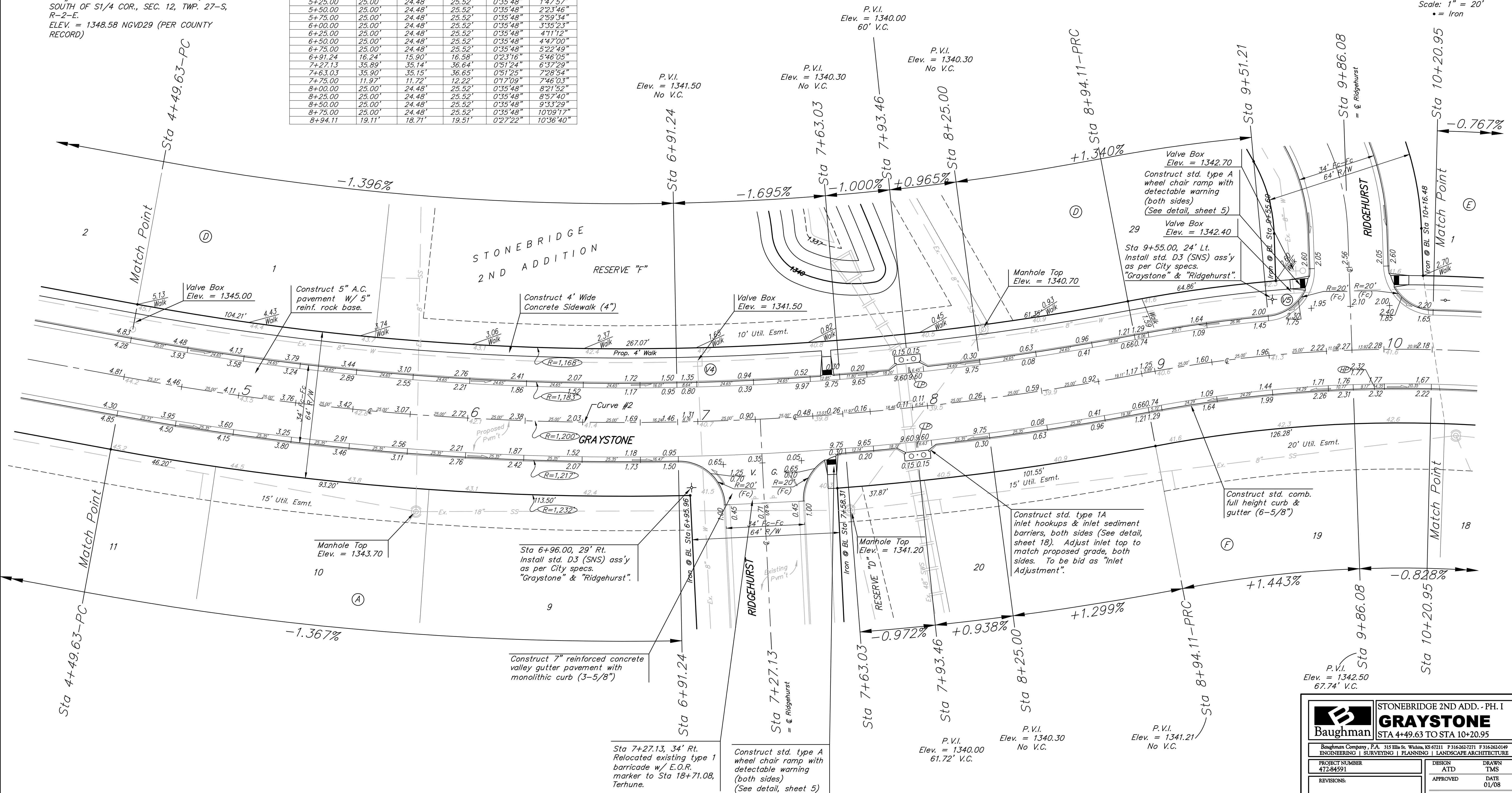
BENCHMARK:
 BM #1: "X" CUT, TOP OF CURB, S. SIDE OF SUNDANCE AS DEDICATED IN SAVANNA AT CASTLE ROCK RANCH 7TH ADDITION, 25'± W. OF THE WEST LINE OF THE SE1/4 OF SEC. 12, TWP. 27-S, R-2-E. ELEV. = 1347.33 NGVD29

BM #2: 60d NAIL IN HIGH LINE POLE, 30' SOUTH OF S1/4 COR., SEC. 12, TWP. 27-S, R-2-E. ELEV. = 1348.58 NGVD29 (PER COUNTY RECORD)

Curve #2
 Curve Data Based on Centerline
 Rad. = 1200' Delta = 21° 13' 20" Tangent = 224.81'
 Arc = 444.48' L.C. = 441.94' Def/ft. = 1.43239 Min.

Station	Arc	FACE CHORD LENGTHS		Defl.	T. Defl.
		8' Lt.	8' Rt.		
4+49.63				0'00'00"	0'00'00"
4+75.00	25.37'	24.84'	25.90'	0'36'20"	0'36'20"
5+00.00	25.00'	24.48'	25.52'	0'35'48"	1'12'09"
5+25.00	25.00'	24.48'	25.52'	0'35'48"	1'47'57"
5+50.00	25.00'	24.48'	25.52'	0'35'48"	2'23'46"
5+75.00	25.00'	24.48'	25.52'	0'35'48"	2'59'34"
6+00.00	25.00'	24.48'	25.52'	0'35'48"	3'35'23"
6+25.00	25.00'	24.48'	25.52'	0'35'48"	4'11'12"
6+50.00	25.00'	24.48'	25.52'	0'35'48"	4'47'00"
6+75.00	25.00'	24.48'	25.52'	0'35'48"	5'22'49"
6+91.24	16.24'	15.90'	16.58'	0'23'16"	5'46'05"
7+27.13	35.89'	35.14'	36.64'	0'51'24"	6'37'29"
7+63.03	35.90'	35.15'	36.65'	0'51'25"	7'28'54"
7+75.00	11.97'	11.72'	12.22'	0'17'09"	7'46'03"
8+00.00	25.00'	24.48'	25.52'	0'35'48"	8'21'52"
8+25.00	25.00'	24.48'	25.52'	0'35'48"	8'57'40"
8+50.00	25.00'	24.48'	25.52'	0'35'48"	9'33'29"
8+75.00	25.00'	24.48'	25.52'	0'35'48"	10'09'17"
8+94.11	19.11'	18.71'	19.51'	0'27'22"	10'36'40"

Scale: 1" = 20'
 • = Iron



Baughman **GRAYSTONE**
 STONEBRIDGE 2ND ADD. - PH. I
 STA 4+49.63 TO STA 10+20.95

Baughman Company, P.A. 315 Ellis St. Wichita, KS 67211 P3162627271 F3162620149
 ENGINEERING | SURVEYING | PLANNING | LANDSCAPE ARCHITECTURE

PROJECT NUMBER 412-84591	DESIGN ATD	DRAWN TMS
REVISIONS:	APPROVED	DATE 01/08
	SCALE Noted	SHEET 9 OF 27

Stonebridge|Str2 0607-E601