

BENCHMARK:
 BM #1: 3" CUT, TOP OF CURB, S. SIDE OF SUNDANCE AS DEDICATED IN SAVANNA AT CASTLE ROCK RANCH 7TH ADDITION, 25± W. OF THE WEST LINE OF THE SE1/4 OF SEC. 12, TWP. 27-S, R-2-E.
 ELEV. = 1347.33 NGVD29

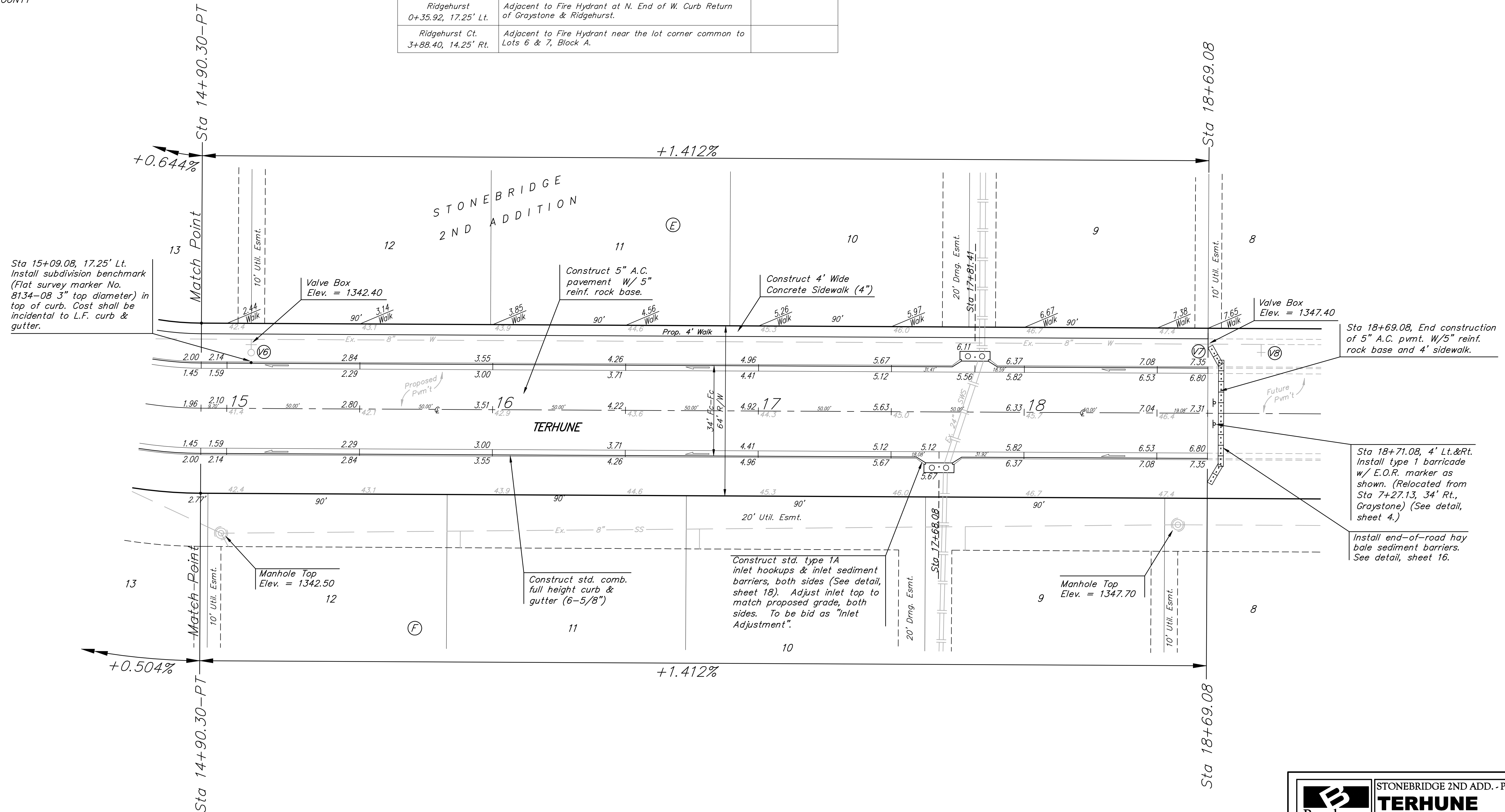
BM #2: 60d NAIL IN HIGH LINE POLE, 30' SOUTH OF S1/4 COR., SEC. 12, TWP. 27-S, R-2-E.
 ELEV. = 1348.58 NGVD29 (PER COUNTY RECORD)

P.V.I.
 Elev. = 1342.00
 No V.C.

P.V.I.
 Elev. = 1342.00
 No V.C.

Street & Station	Location Description	Elevation
Graystone 4+49.63, 17.25' Lt.	Adjacent to Fire Hydrant near the lot corner common to Lots 1 & 2, Block D.	
Terhune 15+09.08, 17.25' Lt.	Adjacent to Fire Hydrant near the lot corner common to Lots 12 & 13, Block E.	
Ridgehurst 0+35.92, 17.25' Lt.	Adjacent to Fire Hydrant at N. End of W. Curb Return of Graystone & Ridgehurst.	
Ridgehurst Ct. 3+88.40, 14.25' Rt.	Adjacent to Fire Hydrant near the lot corner common to Lots 6 & 7, Block A.	

Scale: 1" = 20'
 • = Iron



Sta 18+69.08, End construction of 5" A.C. pvm't. W/5" reinf. rock base and 4' sidewalk.

Sta 18+71.08, 4' Lt.&Rt. Install type 1 barricade w/ E.O.R. marker as shown. (Relocated from Sta 7+27.13, 34' Rt., Graystone) (See detail, sheet 4.)

Install end-of-road hay bale sediment barriers. See detail, sheet 16.

	STONEBRIDGE 2ND ADD. - PH. I	
	TERHUNE STA 14+90.30 TO STA 18+69.08	
<small>Baughman Company, P.A. 315 Ellis St. Wichita, KS 67211 F3162627271 F3162620149 ENGINEERING SURVEYING PLANNING LANDSCAPE ARCHITECTURE</small>		
PROJECT NUMBER 472-84591	DESIGN ATD	DRAWN TMS
REVISIONS:	APPROVED	DATE 01/08
SCALE Noted		SHEET 11 OF 27
<small>Stonebridge\Str4</small>		<small>0607-E601</small>