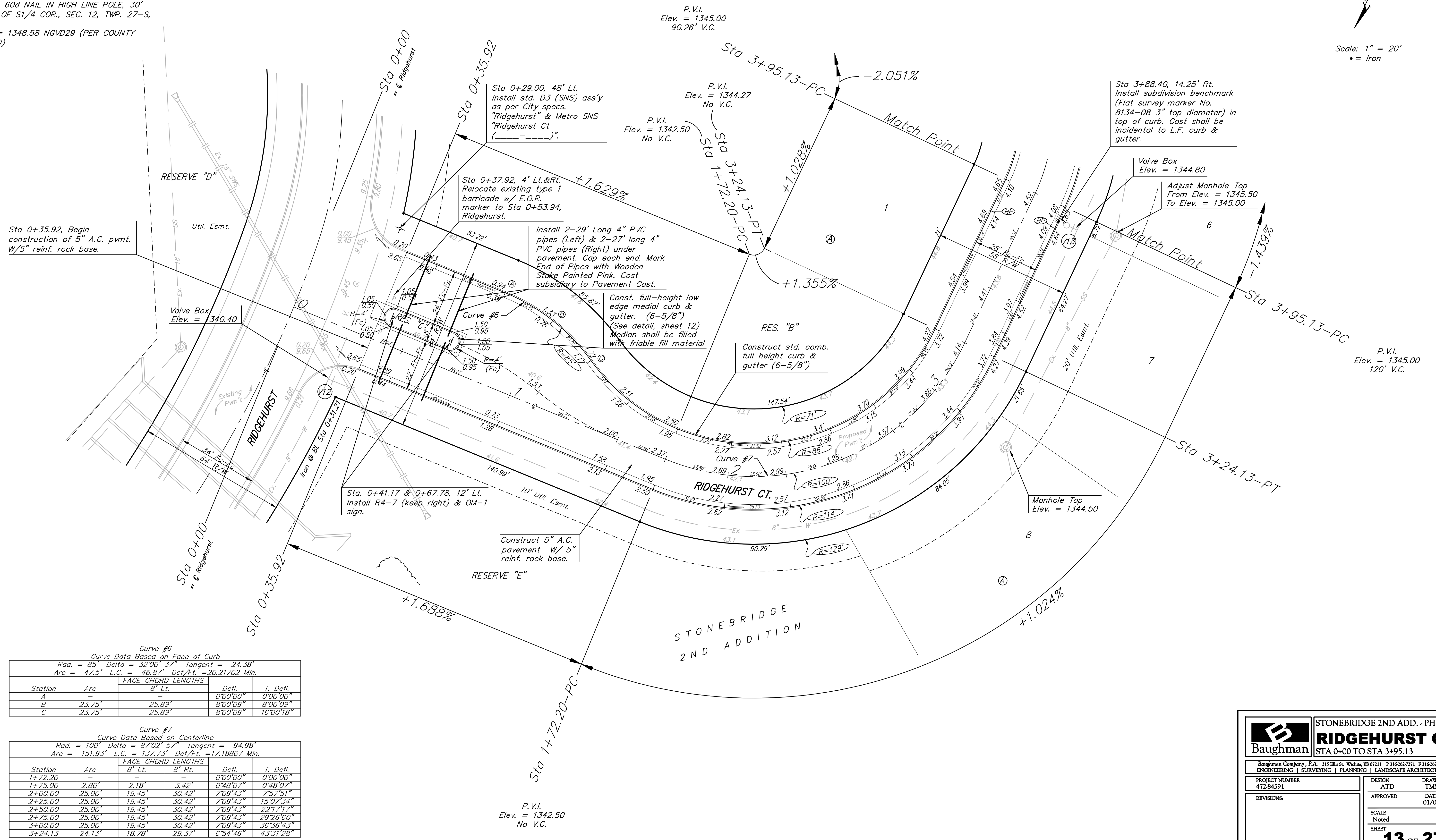


BENCHMARK:
 BM #1: "I" CUT, TOP OF CURB, S. SIDE OF SUNDANCE AS DEDICATED IN SAVANNA AT CASTLE ROCK RANCH 7TH ADDITION, 25'± W. OF THE WEST LINE OF THE SE1/4 OF SEC. 12, TWP. 27-S, R-2-E. ELEV. = 1347.33 NGVD29

BM #2: 60d NAIL IN HIGH LINE POLE, 30' SOUTH OF S1/4 COR., SEC. 12, TWP. 27-S, R-2-E. ELEV. = 1348.58 NGVD29 (PER COUNTY RECORD)

Scale: 1" = 20'
 • = Iron



Curve #6
 Curve Data Based on Face of Curb
 Rad. = 85' Delta = 32°00'37" Tangent = 24.38'
 Arc = 47.5' L.C. = 46.87' Def/Ft. = 20.21702 Min.

| Station | Arc | FACE CHORD LENGTHS | | Defl. | T. Defl. |
|---------|--------|--------------------|--------|----------|-----------|
| | | 8' Lt. | 8' Rt. | | |
| A | - | - | - | 0'00"00" | 0'00"00" |
| B | 23.75' | 25.89' | 25.89' | 8'00"09" | 8'00"09" |
| C | 23.75' | 25.89' | 25.89' | 8'00"09" | 16'00"18" |

Curve #7
 Curve Data Based on Centerline
 Rad. = 100' Delta = 87°02'57" Tangent = 94.98'
 Arc = 151.93' L.C. = 137.73' Def/Ft. = 17.18867 Min.

| Station | Arc | FACE CHORD LENGTHS | | Defl. | T. Defl. |
|---------|--------|--------------------|--------|----------|-----------|
| | | 8' Lt. | 8' Rt. | | |
| 1+72.20 | - | - | - | 0'00"00" | 0'00"00" |
| 1+75.00 | 2.80' | 2.18' | 3.42' | 0'48"07" | 0'48"07" |
| 2+00.00 | 25.00' | 19.45' | 30.42' | 7'09"43" | 7'57"51" |
| 2+25.00 | 25.00' | 19.45' | 30.42' | 7'09"43" | 15'07"34" |
| 2+50.00 | 25.00' | 19.45' | 30.42' | 7'09"43" | 22'17"17" |
| 2+75.00 | 25.00' | 19.45' | 30.42' | 7'09"43" | 29'26"60" |
| 3+00.00 | 25.00' | 19.45' | 30.42' | 7'09"43" | 36'36"43" |
| 3+24.13 | 24.13' | 18.78' | 29.37' | 6'54"46" | 43'31"28" |

Baughman ENGINEERING | SURVEYING | PLANNING | LANDSCAPE ARCHITECTURE

STONEBRIDGE 2ND ADD. - PH. I
RIDGEHURST CT.
 STA 0+00 TO STA 3+95.13

Baughman Company, P.A. 315 Ellis St. Wichita, KS 67211 P 316-262-7271 F 316-262-0149
 ENGINEERING | SURVEYING | PLANNING | LANDSCAPE ARCHITECTURE

| | | |
|-----------------------------|---------------|--------------------------|
| PROJECT NUMBER 472-84591 | DESIGN ATD | DRAWN TMS |
| REVISIONS: | APPROVED | DATE 01/08 |
| SCALE Noted | | SHEET 13 OF 27 |

Stonebridge/Str6 0607-E601