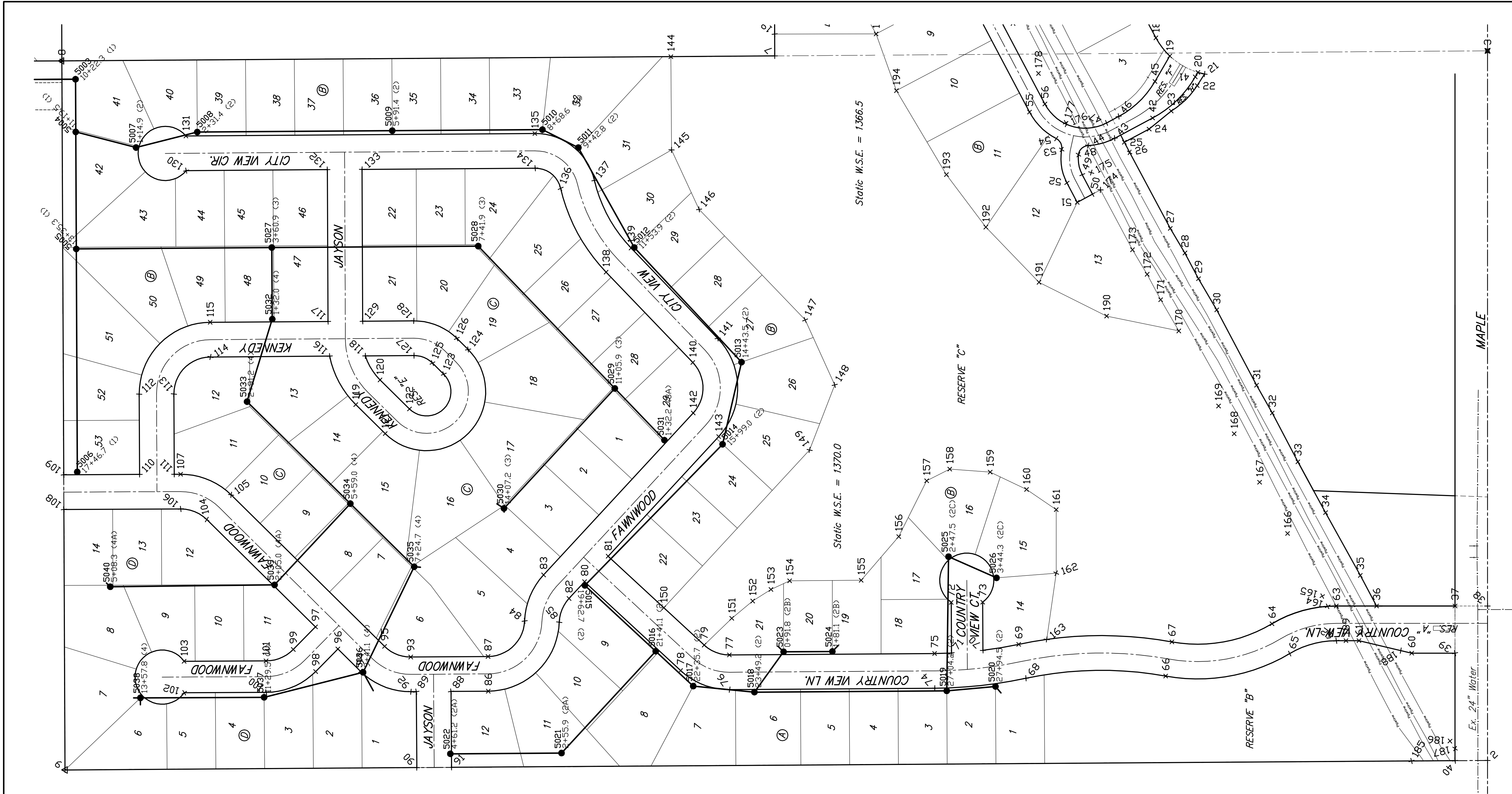


SCALE
1" = 100'



SANITARY SEWER POINTS

PT #	NORTHING	EASTING	DESC
5000	20695.4878	12190.2824	0+42.4 (1)
5001	20395.4932	12192.1368	3+42.4 (1)
5002	20095.4990	12193.9911	6+42.4 (1)
5003	19715.5404	12196.3398	10+22.3 (1)
5004	19715.1205	12099.1622	11+19.5 (1)
5005	19714.1779	11883.3860	13+35.3 (1)
5006	19712.3816	11471.9997	17+46.7 (1)
5007	19603.8651	12070.3825	1+14.9 (2)
5008	19490.9084	12098.9451	2+31.4 (2)
5009	19130.9171	12101.4507	5+91.4 (2)
5010	18853.7260	12103.3799	8+68.6 (2)
5011	18787.4431	12070.1852	9+42.8 (2)
5012	18684.2206	11886.0086	11+53.9 (2)
5013	18486.3012	11674.5876	14+43.5 (2)
5014	18521.3121	11523.0855	15+99.0 (2)
5015	18775.4563	11562.8811	19+62.7 (2)
5016	18644.7475	11141.4280	21+41.1 (2)
5017	18575.4877	11077.0727	22+35.7 (2)
5018	18462.5074	11065.9291	23+49.2 (2)
5019	18107.5152	11068.2946	27+04.2 (2)
5020	18017.5674	11076.4219	27+94.5 (2)
5021	18818.5147	10953.5544	2+55.9 (2A)
5022	19023.7619	10952.1868	4+61.2 (2A)
5023	18408.6103	11140.2899	0+91.8 (2B)
5024	18318.6103	11140.8896	1+81.1 (2B)
5025	18104.2043	11135.8196	2+47.5 (2B)
5026	18015.6846	11276.6805	3+44.3 (2B)
5027	18353.3138	11885.8976	3+60.9 (3)
5028	18972.2681	11888.5497	7+41.9 (3)
5029	18720.1712	11626.0377	11+05.9 (3)
5030	18924.7473	11404.6543	1+407.2 (3)
5031	18628.3803	11530.6629	1+32.2 (3A)
5032	19352.3951	11753.9008	1+32.0 (4)
5033	19398.9444	11601.6704	2+91.2 (4)
5034	19208.3306	11415.5801	5+59.0 (4)
5035	19090.3799	11297.1909	7+24.7 (4)
5036	19184.7670	11102.4825	9+41.1 (4)
5037	19367.4640	11056.4073	11+29.5 (4)
5038	19595.7899	11055.4100	13+57.8 (4)
5039	19348.1880	11263.6915	2+05.0 (4A)
5040	19651.4537	11260.2638	5+08.3 (4A)

PT #	NORTHING	EASTING
2	17109.3290	10939.9429
3	17109.3340	12248.7265
7	18425.0450	12239.3667
8	19740.6931	12230.2098
9	19736.8807	12192.4470
10	18426.6162	13287.8864
11	18303.5892	13071.8652
12	18158.0036	12796.4564
13	18061.9075	12671.8878
14	18013.8148	12519.9184
15	17953.2886	12408.5241
16	17815.7505	12005.2246
17	17802.5441	12423.4111
18	17721.4337	12272.6585
19	17693.8332	12232.9431
20	17643.9933	12209.0333
21	17631.7184	12205.8944
22	17645.1819	12184.7216
23	17693.1830	12137.2977
24	17734.0031	12104.4391
25	17778.6281	12080.1124
26	17769.9859	12061.3760
27	17694.9892	11921.2912
28	17663.6414	11875.8433
29	17642.8426	11828.5376
30	17608.2828	11771.0585
31	17535.6839	11632.0881
32	17506.6715	11580.7786
33	17458.4851	11490.8217
34	17408.3265	11387.0800
35	17344.1128	11281.1745
36	17314.1538	11224.7658
37	17163.3301	11224.7663
38	17108.3301	11224.7663
39	17169.3298	11137.7663
40	17169.3290	10939.9431


PT #	NORTHING	EASTING
41	17648.8718	12200.6620
42	17727.5415	12124.8971
43	17797.4945	12087.5827
44	17846.4734	12074.0680
45	17723.2594	12192.1789
46	17827.7287	12127.7298
47	17812.5553	12115.8170
48	17864.4389	12057.1734
49	17857.4057	12020.2469
50	17838.4858	11984.4354
51	17866.6976	11969.3517
52	17885.6963	12005.2921
53	17895.3826	12066.7340
54	17905.3702	12086.8921
55	17954.6429	12135.7207
56	17926.3524	12150.6755
57	18210.0819	12618.9430
58	18231.2775	12628.5476
59	18207.1513	12681.8342
60	18249.3298	11137.7680
61	17346.6489	11160.7656
62	17388.4807	11160.7655
63	17388.4909	11224.7655
64	17507.2438	11192.0681
65	17474.4842	11137.0881
66	17703.3629	11095.5703
67	17692.0014	11158.5538
68	17661.4039	11091.4617
69	17574.7648	11154.0516
70	18040.6508	11142.9587
71	18098.6190	11137.9961
72	18099.2415	11231.4231
73	18041.2408	11231.4231
74	18129.5823	11137.1478
75	18129.9787	11137.1464
76	18508.2642	11070.6243

PT #	NORTHING	EASTING
77	18508.6907	11134.6229
78	18508.7729	11105.7162
79	18555.3164	11152.7005
80	18776.0103	11269.6459
81	18732.5338	11176.6162
82	18804.6378	11238.6844
83	18851.6221	11282.1510
84	18886.6330	11197.2285
85	18822.6737	11194.9465
86	18953.7022	11067.6561
87	18954.1367	11131.6547
88	18890.9656	11697.8888
89	18086.5268	11066.7711
90	19085.5940	10826.7742
91	19027.5954	10827.2086
92	19096.4699	11066.7048
93	18210.0819	11100.7034
94	18190.0635	11104.7439
95	18145.1112	11281.7989
96	18231.3481	11145.4819
97	18272.6326	11186.2199
98	18272.3886	11103.9110
99	18313.6532	11144.8490
100	18363.6277	11065.5192
101	18363.8811	11123.5186
102	18514.8699	11064.8585
103	18515.1232	11122.8580
104	18473.3080	11384.2366
105	18428.3337	11428.7920
106	18521.3648	11403.8334
107	18521.6443	11467.8328
108	18737.0793	11402.8911
109	18737.5892	11466.8905
110	18597.3802	11467.8921
111	18533.3808	11467.7816
112	18598.0068	11615.5301

PT #	NORTHING	EASTING
113	18534.0074	11615.8097
114	18466.4814	11684.1051
115	18466.9268	11748.1035
116	18246.3765	11685.6370
117	18249.5882	11746.6162
118	18180.5355	11686.0953
119	18198.3718	11596.2846
120	18153.4195	11641.8400
121	18144.0843	11542.7158
122	18069.1320	11582.7023
123	18035.9179	11652.3335
124	18090.9656	11697.8888
125	18056.7477	11672.8875
126	18011.7955	11718.4429
127	18090.7960	11686.7198
128	18091.2414	11750.7183
129	18185.5906	11750.0616
130	18511.3053	12027.8014
131	18511.7507	12091.7989
132	18250.8123	12029.6145
133	18186.8136	12030.0599
134	18867.2141	12032.2843
135	18867.0595	12096.2828
136	18820.1330	11995.1812
137	18757.8037	12009.7089
138	18736.2612	11840.5824
139	18690.0999	11884.9122
140	18576.3139	11674.0271
141	18530.1526	11718.3570
142	18575.4394	11580.7540
143	18528.4551	11537.2975
144	18616.6415	12238.0332
145	18615.4438	12086.0862
146	18564.6138	11956.3630
147	18368.7810	11752.4396
148	18314.3236	11632.5432

PT #	NORTHING	EASTING
149	18360.6333	11512.5600
150	18629.7755	11221.5690
151	18504.3195	11202.1032
152	18465.7716	11233.9475
153	18431.9444	11256.2950
154	18397.5103	11271.8627
155	18265.5133	11272.2463
156	18196.1015	11352.7301
157	18144.5914	11455.8580
158	18107.9823	11477.1924
159	18027.3614	11471.8583
160	17960.2389	11439.7930
161	17905.5133	11402.4444
162	17865.5133	11285.3896
163	17823.0791	11163.1616
164	17404.4449	11224.2162
165	17414.4341	11243.0247
166	17478.4280	11358.5332
167	17530.0341	11453.0950
168	17576.9846	11549.4871
169	17605.8486	11593.6407
170	17679.2047	11732.1526
171	17712.7827	11789.8827
172	17737.5947	11836.6149
173	17764.6318	11881.8776
174	17823.7671	11992.3353
175	17840.8216	12024.1908
176	17886.3353	12113.4025
177	17888.1714	12116.1223
178	17938.1605	12207.1053
179	17985.1168	12299.3255
180	18084.2262	12482.2736
181	18192.5360	12689.6465
182	18256.8467	12759.2801
183	18374.0875	13034.0471
184	18426.3671	13130.0934

PT #	NORTHING	EASTING
185	17249.7212	10939.0074
186	17178.6023	10975.6891
187	17169.3291	10961.7824
188	17269.6330	11142.5643
189	17370.6906	11160.7655
190	17213.3715	11759.5489
191	17837.2547	11821.8379
192	18035.3165	11923.5792
193	18108.0939	12020.4025
194	18202.4842	12135.3706
195	18237.9113	12280.0094
196	18425.1049	12279.7315



Baughman

THE WOODS ADDITION
COORDINATE SHEET
SANITARY SEWER IMPROVEMENTS

Baughman Company, P.A. 315 Ellis St. Wichita, KS 67211 P 316-262-0149 F 316-262-0149
ENGINEERING | SURVEYING | PLANNING | LANDSCAPE ARCHITECTURE

PROJECT NUMBER 468-84129	DESIGN AEG	DRAWN AEG
REVISIONS:	APPROVED	DATE
		Jan 2008

SCALE
Noted
SHEET

26 OF 31

The Woods Addition\SS\SS Coordinates.dwg