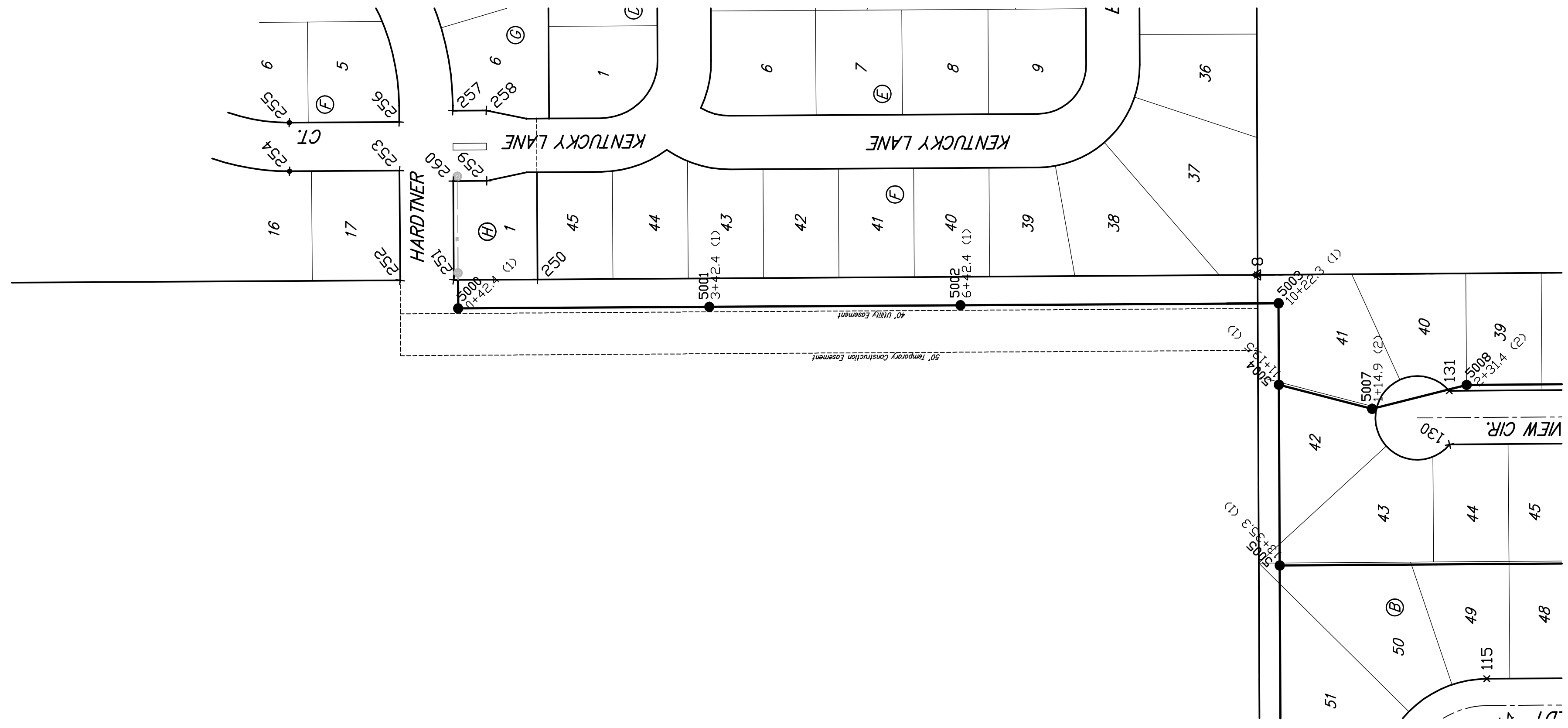



SCALE
1" = 100'



PT #	NORTHING	EASTING
250	20600.6766	12224.8716
251	20700.6746	12224.2509
252	20764.6734	12223.8536
253	20763.4866	12354.8864
254	20896.7942	12354.0513
255	20897.1542	12412.0502
256	20765.8467	12412.8653
257	20701.9296	12426.2612
258	20661.9294	12426.5106
259	20661.4080	12342.5122
260	20701.4072	12342.2639

PT #	NORTHING	EASTING	DESC
5000	20695.4878	12190.2824	0+42.4 (1)
5001	20395.4932	12192.1368	3+42.4 (1)
5002	20095.4990	12193.9911	6+42.4 (1)
5003	19715.5404	12196.3398	10+22.5 (1)
5004	19715.1205	12099.1622	11+19.5 (1)
5005	19714.1779	11883.3860	13+35.3 (1)
5006	19712.3816	11471.9997	17+46.7 (1)
5007	19603.8651	12070.3625	1+14.9 (2)
5008	19490.9084	12098.9451	2+31.4 (2)
5009	19130.9171	12101.4507	5+91.4 (2)
5010	18853.7260	12103.3799	8+68.6 (2)
5011	18787.4431	12070.1852	9+42.8 (2)
5012	18694.2206	11886.0086	11+53.9 (2)
5013	18486.3012	11674.5876	14+43.5 (2)
5014	18521.3121	11523.0855	15+99.0 (2)
5015	18775.4563	11262.8811	19+62.7 (2)
5016	18644.7475	11141.4280	21+41.1 (2)
5017	18575.4877	11077.0727	22+35.7 (2)
5018	18462.5074	11065.9291	23+49.2 (2)
5019	18107.5152	11068.2946	27+04.2 (2)
5020	18017.5674	11076.4219	27+94.5 (2)
5021	18818.5147	10953.3544	2+35.9 (2A)
5022	19023.7619	10952.1868	4+61.2 (2A)
5023	18408.6103	11140.2899	0+91.8 (2B)
5024	18318.6103	11140.8896	1+81.1 (2B)
5025	18104.2043	11315.8196	2+47.5 (2C)
5026	18015.6846	11276.6805	3+44.3 (2C)
5027	19353.3138	11885.8976	3+60.9 (3)
5028	18972.2681	11888.5497	7+41.9 (3)
5029	18720.1712	11626.0377	11+05.9 (3)
5030	18524.7473	11404.8543	14+07.2 (3)
5031	18628.5803	11530.6629	1+32.2 (3A)
5032	19352.3951	11753.9008	1+32.0 (4)
5033	19398.9444	11601.6704	2+91.2 (4)
5034	19208.3306	11413.5801	5+59.0 (4)
5035	19090.3799	11297.1909	7+24.7 (4)
5036	19184.7670	11102.4825	9+41.1 (4)
5037	19367.4640	11056.4073	11+29.5 (4)
5038	19595.7899	11055.4100	13+57.8 (4)
5039	19348.1820	11263.6915	2+03.0 (4A)
5040	19651.4537	11260.2638	5+08.3 (4A)



Baughman

Baughman Company, P.A. 315 Ellis St. Wichita, KS 67211 P 316-262-7271 F 316-262-0149
ENGINEERING | SURVEYING | PLANNING | LANDSCAPE ARCHITECTURE

THE WOODS ADDITION

COORDINATE SHEET

SANITARY SEWER IMPROVEMENTS

PROJECT NUMBER 468-84129	DESIGN AEG	DRAWN AEG
REVISIONS:	APPROVED	DATE Jan 2008
	SCALE Noted	
	SHEET	27 OF 31

The Woods Addition\SS\SS Coordinates.dwg