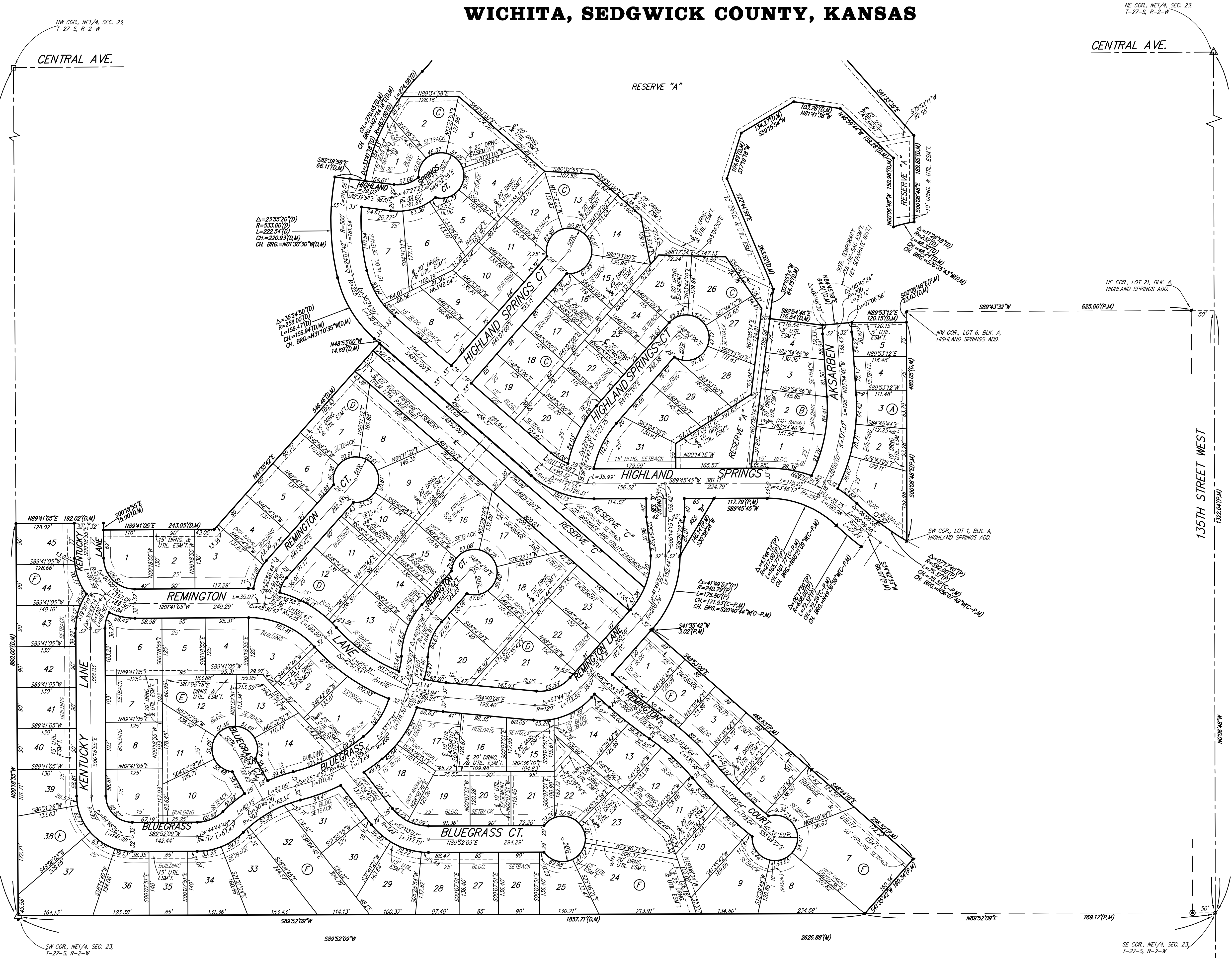


HIGHLAND SPRINGS 2ND ADDITION

WICHITA, SEDGWICK COUNTY, KANSAS

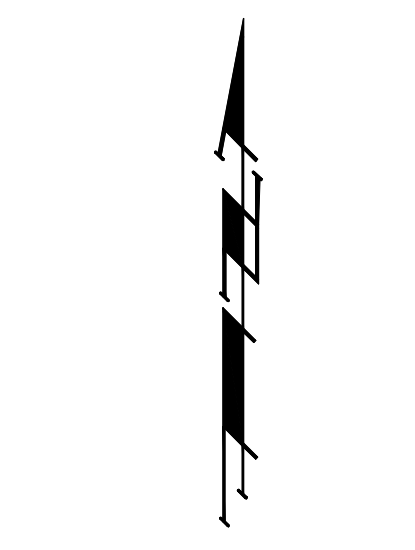


NW COR., NE 1/4, SEC. 23,
T-27-S, R-2-W

CENTRAL AVE.

NE COR., LOT 21, BLK. A,
HIGHLAND SPRINGS ADD.

SE COR., NE 1/4, SEC. 23,
T-27-S, R-2-W



- LEGEND:**
- = #4 REBAR W/ "BAUGHMAN" CAP (FOUND)
 - = #4 REBAR W/ "BAUGHMAN" CAP (SET)
 - △ = STONE W/ #4 REBAR ON S. SIDE (FOUND)
 - ▽ = 1/2" IRON OVER @ STONE (FOUND)
 - ◇ = 3/4" IRON (FOUND)
 - ⊙ = #4 REBAR W/ "T.L.S.L." CAP (FOUND)
 - = STONE W/ #5 REBAR ON W. SIDE (FOUND)
- (M) = MEASURED
(D) = DESCRIBED
(P) = PLATTED
(C-P) = CALCULATED PER PLATTED INFO.

BLOCK	LOT(S)	ELEVATION (CITY DATUM)	ELEVATION (NGVD)
B	1,2,3,4	165.0	1352.4
C	2,3,4,12,13,14,15,25, 26,27,28,29,30,31	165.0	1352.4
F	6,7,8	162.0	1349.4

BENCHMARK:
135TH ST. W. & CENTRAL
CITY OF WICHITA BENCHMARK DISC - NE COR. INTERSECTION,
32.6' N. & 24.5' E. OF C BOTH, 39.5' NE OF IRON AT SEC. COR.
ELEV = 159.50 CITY DATUM
(1346.90 M.S.L.)

NOTE:
A MASTER GRADING PLAN FOR DRAINAGE HAS BEEN DEVELOPED FOR THIS SUBDIVISION AND IS ON FILE WITH THE CITY OF WICHITA, KANSAS. ALL DRAINAGE EASEMENTS, RIGHTS-OF-WAY, OR RESERVES SHALL REMAIN AT ESTABLISHED GRADES OR AS MODIFIED WITH THE APPROVAL OF THE CITY ENGINEER OF THE CITY OF WICHITA, KANSAS. NO OBSTRUCTIONS WHICH IMPEDE THE FLOW OF THIS DRAINAGE SYSTEM SHALL BE ALLOWED.