

GENERAL NOTES

- ALL CONSTRUCTION AND MATERIALS TO COMPLY WITH CITY OF WICHITA SPECIFICATIONS AND STANDARDS.
- ALL ELEVATIONS SHOWN ARE BASED ON USGS DATUM.
- AT LEAST 72 HOURS PRIOR TO BEGINNING EXCAVATION (EXCLUDING WEEKENDS AND HOLIDAYS), THE CONTRACTOR SHALL CONTACT THE KANSAS ONE-CALL SYSTEM, A UTILITY LOCATION SERVICE, AT (316) 687-2470 TO REQUEST THE LOCAL UTILITY COMPANIES MARK ANY EXISTING LINES WITHIN THE PROJECT AREA.
- UNDERGROUND UTILITY SERVICE LINES AND OVERHEAD UTILITY POLE LINES ARE TO BE ADJUSTED AS NECESSARY BY OTHERS PRIOR TO CONSTRUCTION UNLESS THE PLANS SPECIFICALLY CALL FOR THEIR ADJUSTMENT BY THE CONTRACTOR OR UNLESS THE PLANS SPECIFICALLY IDENTIFY A UTILITY TO BE ADJUSTED BY ITS OWNER DURING CONSTRUCTION. EXISTING UTILITIES AND THEIR LOCATIONS, AS SHOWN ON THE PLANS, REPRESENT THE BEST INFORMATION OBTAINABLE FOR THE DESIGN. THE CONTRACTOR WILL BE REQUIRED TO WORK AROUND EXISTING UTILITIES WITHIN THE RIGHT-OF-WAY WHICH DO NOT CONFLICT WITH PROPOSED CONSTRUCTION.
- THE CONTRACTOR SHALL BE RESPONSIBLE FOR PRESERVING PROPERTY IRONS. THE CONTRACTOR WILL BE REQUIRED TO RE-ESTABLISH ANY PROPERTY IRONS WHICH ARE DAMAGED OR DESTROYED BY HIS CONSTRUCTION OPERATIONS. SUCH IRONS SHALL BE RE-ESTABLISHED BY A LICENSED LAND SURVEYOR IN ACCORDANCE WITH STATE LAWS. ALL COSTS FOR THIS WORK SHALL BE SUBSIDIARY TO THE LUMP SUM PRICE BID FOR "SITE RESTORATION".
- CONTRACTOR SHALL PROVIDE POSITIVE DRAINAGE AWAY FROM ALL MANHOLE COVERS.
- MANHOLES SHALL BE TYPE "A" MANHOLES. MANHOLES SHALL BE CONSTRUCTED IN ACCORDANCE WITH THE STANDARD SPECIFICATIONS AND THE STANDARD DETAIL DRAWINGS.
- ALL LAWN/TURF AREAS DISTURBED BY CONSTRUCTION OF THE PROPOSED IMPROVEMENTS SHALL BE RESTORED WITH THE SAME GRASS/SOD AS EXISTING. RESTORATION OF DISTURBED AREAS SHALL INCLUDE, BUT NOT BE LIMITED TO, TOP SOIL PREPARATION, SEEDING, MULCH, AND/OR RESEEDING. ALL SEEDING/SODDING WORK SHALL BE IN ACCORDANCE WITH THE CITY OF WICHITA STANDARD SPECIFICATIONS AND THE CITY OF WICHITA ADMINISTRATIVE REGULATION NO. AR78 WHICH GOVERNS CLEANUP AND RESTORATION OR REPLACEMENT FOLLOWING CONSTRUCTION. ALL COSTS FOR THIS WORK SHALL BE SUBSIDIARY TO THE LUMP SUM PRICE BID FOR "SITE RESTORATION".
- RUBBLE FROM THE REMOVAL OF MISCELLANEOUS STRUCTURES INCLUDING ANY TREES REMOVED, TREE TRIMMINGS, AND EXCESS EXCAVATION WHICH IS TO BE WASTED SHALL BE DISPOSED OF ON SITES PROVIDED BY THE CONTRACTOR. THESE SITES SHALL ALSO BE APPROVED BY THE ENGINEER AS TO SUITABILITY, APPEARANCE, AND SITE LOCATION. LOCATIONS THAT, IN THE OPINION OF THE ENGINEER, WILL LEAVE AN UNSIGHTLY APPEARANCE WILL NOT BE APPROVED. ALL DISPOSAL SITES MUST BE APPROVED BY THE KANSAS DEPARTMENT OF HEALTH AND ENVIRONMENT. MATERIAL EITHER STOCKPILED OR DISPOSED OF IN A FLOOD PLAIN WILL REQUIRE A KANSAS STATE BOARD OF AGRICULTURE PERMIT. ANY MATERIAL DUMPED IN WATERS OF THE UNITED STATES OR WETLANDS IS SUBJECT TO U.S. CORPS OF ENGINEERS PERMITTING REGULATIONS. ANY MATERIAL BURIED OR STOCKPILED BEYOND APPROVED CONSTRUCTION LIMITS MAY REQUIRE ARCHAEOLOGICAL INVESTIGATIONS UNLESS BURIED IN A PREVIOUSLY APPROVED DISPOSAL LOCATION.
- THE CONTRACTOR SHALL AVOID REMOVAL OR TRIMMING OF ANY TREES OR SHRUBS WHERE POSSIBLE. WHERE THE CONTRACTOR BELIEVES THE REMOVAL OR TRIMMING IS UNAVOIDABLE, HE SHALL COORDINATE SUCH WORK WITH THE ENGINEER.
- THE CONTRACTOR SHALL PREVENT ANY CONSTRUCTION DEBRIS FROM ENTERING THE EXISTING STORM WATER SYSTEM DURING CONSTRUCTION.
- ALL APPROVED EXCESS EXCAVATION WHICH IS TO BE WASTED SHALL BE STOCKPILED WITHIN LOTS 15 & 16 OR HAULED OFF-SITE AT NO ADDITIONAL COST TO THE OWNER. STOCKPILE LOCATIONS SHALL BE AS DIRECTED BY THE OWNER AND IN ACCORDANCE WITH GENERAL NOTE NO. 10 ABOVE.
- CONTRACTOR IS REQUIRED TO MAINTAIN CONTINUOUS FLOW IN EXISTING STORM WATER MAINS AT ALL TIMES.
- THE CONTRACTOR SHALL SEED ALL AREAS DISTURBED BY CONSTRUCTION ACTIVITIES WITH TEMPORARY RYE GRASS. RYE GRASS SEED SHALL BE PLANTED AT A MINIMUM RATE OF SIX (6) POUNDS PER ONE THOUSAND (1,000) SQUARE FEET. THIS TEMPORARY SEEDING MAY BE OMITTED ONLY IF OTHER SEEDING IS REQUIRED IN ACCORDANCE WITH GENERAL NOTE NO. 9 ABOVE. TEMPORARY SEEDING OR PERMANENT SEEDING/SODDING SHALL BE APPLIED WITHIN 14 DAYS AFTER THE AREA HAS BEEN DISTURBED.
- THE CONTRACTOR SHALL NOT BURY MANHOLES THAT HAVE RIM ELEVATIONS WHICH ARE LOWER THAN EXISTING GROUND AT THE MANHOLE. THE GROUND AROUND SUCH MANHOLES AND ALONG THE SEWER ALIGNMENT SHALL BE BACKFILLED TO THE APPROXIMATE ELEVATION OF THE PROPOSED GROUND ELEVATION SHOWN ON THE PLAN/PROFILE SHEETS. THE CONTRACTOR SHALL PROVIDE DRAINAGE AWAY FROM THESE MANHOLES AND SEWER LINES BY CONSTRUCTION OF TEMPORARY DITCHES OR SLOPING THE GROUND AS REQUIRED. ALL COSTS FOR THIS WORK SHALL BE CONSIDERED SUBSIDIARY TO THE INSTALLED BID PRICE FOR MANHOLES OR PIPE.
- WHERE INDICATED IN THE PLANS, THE STORM WATER LINE EXCAVATION SHALL BE SAND FILLED AND FLUSHED (JETTED AND VIBRATED) WITH WATER PER THE REQUIREMENTS LISTED IN THE STANDARD SPECIFICATIONS FOR THE CITY OF WICHITA, UNLESS FLOWABLE FILL OR OTHER IMPROVED BACKFILL MATERIAL IS OTHERWISE SPECIFIED. ALL COSTS FOR SAND FILLING AND FLUSHING SHALL BE INCLUDED IN TO THE UNIT PRICE BID FOR "JETTED SAND BACKFILL".
- EROSION CONTROL (BMP'S) THE CONTRACTOR SHALL INSTALL AND/OR MAINTAIN EROSION CONTROL METHODS. THE FOLLOWING QUANTITIES ARE ESTIMATED, AND SHOULD BE CONSIDERED THE MINIMUM EFFORT REQUIRED. THE GENERAL LOCATION OF THE REQUIRED EROSION CONTROL IS ILLUSTRATED ON THE PROJECT KEY MAP. THE STORM WATER CONTRACTOR SHALL BE RESPONSIBLE FOR MAINTAINING THE EROSION CONTROL SHOWN THROUGH THE COMPLETION OF THIS PROJECT. INSTALLATION OF THESE BMP'S DOES NOT RELIEVE THE CONTRACTOR OF THE RESPONSIBILITY OF ABATING SOIL EROSION.

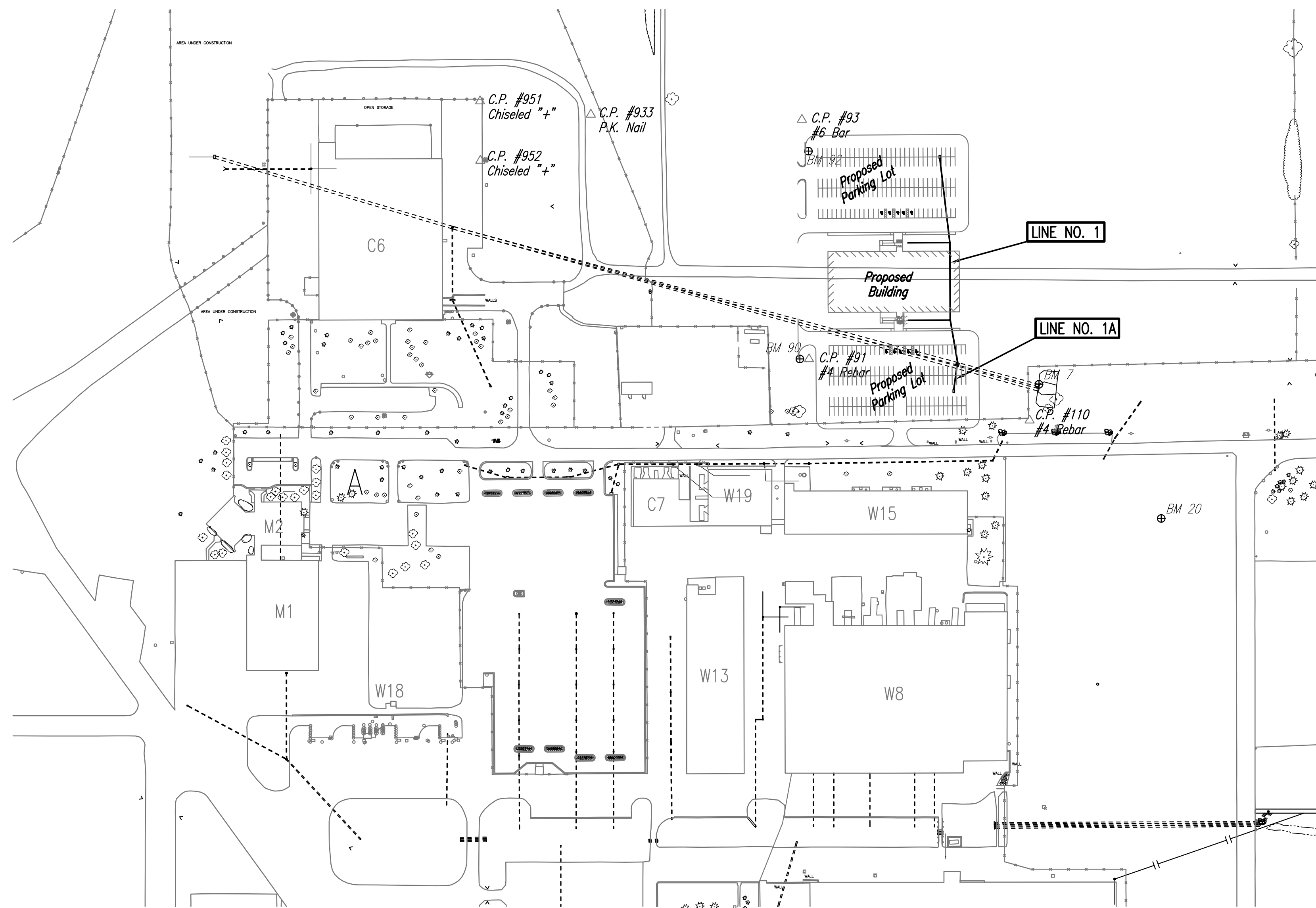
Benchmarks:

- BMK# 7 N-1,671,374.4781, E-1,626,732.6529
Railroad Spike found in the top North end of Concrete Headwall over 2-60" concrete Pipes on the North side of the existing entrance road
Elevation: 1302.59
- BMK# 20 N-1671108.6782, E-1626975.3816
Chiseled "d" in top of south side of concrete light pole base, NW corner of Parking Lot B, east of Building W-15, 130 ft. N to centerline of east-west Cessna Access Road.
Elevation: 1301.35

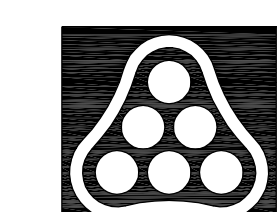
Control Points:

- CP# 55 N-1,671,264.5776, E-1,625,655.7524
#4 Rebar
1. 20.52 ft. N to Chiseled "+" on SW corner area inlet.
2. 48.85 ft. NW to center bolt on W side of (P.V) Water Valve.
3. 41.20 ft. WSW to Chiseled "+" on concrete base of light pole.
4. 17 ft. S to N side Cessna Drive.
Elevation: 1310.44 (NOT SHOWN)
- CP# 110 N-1,671,303.3809, E-1,626,714.2908
#4 Bar in Grass
1. 5 ft. NW to SE corner gravel parking lot.
2. 73.25 ft. NNE to RR spike in top N end concrete headwall.
3. 53.0 ft. ENE to RR spike in top N end concrete headwall.
4. 45.5 ft. S to N back of curb Cessna Access Road.
Elevation: 1303.87
- CP# 91 N-1,671,424.0607, E-1,626,279.8060
#4 Bar in grass area E of Annex 4
1. 34.84 ft. SW to PK nail in E edge Asphalt Drive.
2. 31.52 ft. NW to PK nail in E edge Asphalt Drive.
3. 18.18 ft. W to center of chiseled "d" on light pole base.
4. 96.86 ft. NW to NE corner Annex #4.
5. In line with light poles to North.
Elevation: 1308.92
- CP# 93 N-1,671,895.9386, E-1,626,265.6921
#6 Bar in Grass Area
1. 73.90 ft. NW to top center edge of pavement light.
2. 43.56 ft. SW to chiseled "+" on top of curb.
3. 63.44 ft. SSE to center of chiseled "d" on light pole base.
4. 10 ft. S to N curb line of parking lot to W.
5. 8.5 ft. W to E edge asphalt drive.
Elevation: 1306.36
- CP# 933 N-1,671,896.5996, E-1,625,862.8328
PK Nail near NW corner of parking lot
1. 21.84 ft. S to NE corner of sidewalk.
2. 42.78 ft. NW to center line corner fence post.
3. 31.64 ft. W to N-S chain link fence.
Elevation: 1306.45
- CP# 951 N-1,671,932.2925, E-1,625,631.8664
Chiseled "+" on Concrete Parking Area
1. 3 ft. N to N edge of concrete.
2. 3 ft. E to E edge of concrete.
3. 117.12 ft. S to Chiseled cross on concrete.
Elevation: 1312.92
- CP# 952 N-1,671,815.1776, E-1,625,632.2954
Chiseled "+" on Concrete Parking Area
1. 9.7 ft. E to top center of fire hydrant.
2. 3 ft. E to east edge of concrete.
3. 2.2 ft. N to N face of Building extended.
4. 117.12 ft. N to Chiseled "+" and at NE corner of concrete.
Elevation: 1312.96

SCALE: 1"=150'



Drawn 06-11-2007 8:48:30 AM by SAW
 J:\SERVICES\2007\07289\2007-06-11 to COW\TWS\07289-02-2-SWS KeyMap



No.	Revision	By	Date
PRIVATE STORM WATER SEWER EXTENSION CESSNA LOC ANNEX			
KEY MAP AND GENERAL NOTES			
JAMES L. ARMOUR, P.E. - CITY ENGINEER PRIVATE PROJECT NO. 1783 PPS (607861)			
Professional Engineering Consultants, P.A. 303 S. TOPKA • WICHITA, KANSAS 67202 316-262-2691 • FAX 316-262-3003			
Designed by	DRC	Job No. 35-07289-1353	Sht. C2.2 of 10
Drawn by	SAW	Date JUNE 2007	