

STORM WATER DRAIN #338
TO SERVE

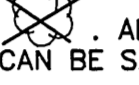
MONARCH LANDING SECOND ADDITION

PROJECT NO. 468-84434

THE CITY OF WICHITA, KANSAS
JAMES L. ARMOUR, P.E., CITY ENGINEER

OCA NO. 751464

GENERAL NOTES

- UNLESS SHOWN OR OTHERWISE STATED ON THESE DRAWINGS, MATERIALS AND CONSTRUCTION SHALL BE IN ACCORDANCE WITH THE CITY OF WICHITA STANDARD SPECIFICATIONS.
- THE TOPS OF INLETS AND MANHOLES AS NOTED ON THE PLANS MAY VARY SO AS TO MEET PROPOSED TOP OF CURB ELEVATIONS OR PAVEMENT ELEVATIONS. THE FIELD ENGINEER SHALL LOCATE INLETS AND MANHOLES WITH REFERENCE TO PROPOSED PAVING PLANS OF THE PERTINENT STREETS.
- ALL CONCRETE SHALL BE STANDARD PAVING MIX UNLESS OTHERWISE NOTED.
- THE CONTRACTOR SHALL BE RESPONSIBLE FOR PRESERVING PROPERTY IRONS. THE CONTRACTOR SHALL BE REQUIRED TO RE-ESTABLISH ANY PROPERTY IRONS WHICH ARE DAMAGED OR DESTROYED BY HIS CONSTRUCTION OPERATIONS. SUCH IRONS SHALL BE RE-ESTABLISHED BY A LICENSED LAND SURVEYOR IN ACCORDANCE WITH STATE LAWS.
- TREES TO BE REMOVED ARE MARKED . ALL TREES WHICH IN THE OPINION OF THE FIELD ENGINEER CAN BE SAVED, SHALL BE SAVED.
- CONTRACTOR SHALL NOTIFY UTILITY COMPANIES OF CONSTRUCTION SCHEDULING.
- EXISTING UTILITIES AND THEIR LOCATIONS, AS SHOWN ON THE PLANS REPRESENT THE BEST INFORMATION OBTAINABLE FOR DESIGN. LOCATION INFORMATION HAS BEEN OBTAINED FROM THE VARIOUS COMPANIES AND IS EITHER FROM COMPANY UTILITY DRAWINGS OR COMPANY PROVIDED FIELD LOCATIONS. THE PLAN LOCATIONS SHOWN ARE NOT GUARANTEED. ADDITIONAL EXISTING UTILITIES MAY ALSO BE ENCOUNTERED.
- CONTRACTOR WILL BE REQUIRED TO PROVIDE A MINIMUM ADVANCE NOTICE OF SEVENTY-TWO (72) HOURS TO UTILITY COMPANIES TO STARTING ANY EXCAVATION AS FOLLOWS:

KANSAS ONE-CALL 800-344-7233
OR 687-2470 (LOCAL WICHITA)

THE CONTRACTOR MUST NOTIFY THE FOLLOWING IN CASE OF EMERGENCY:

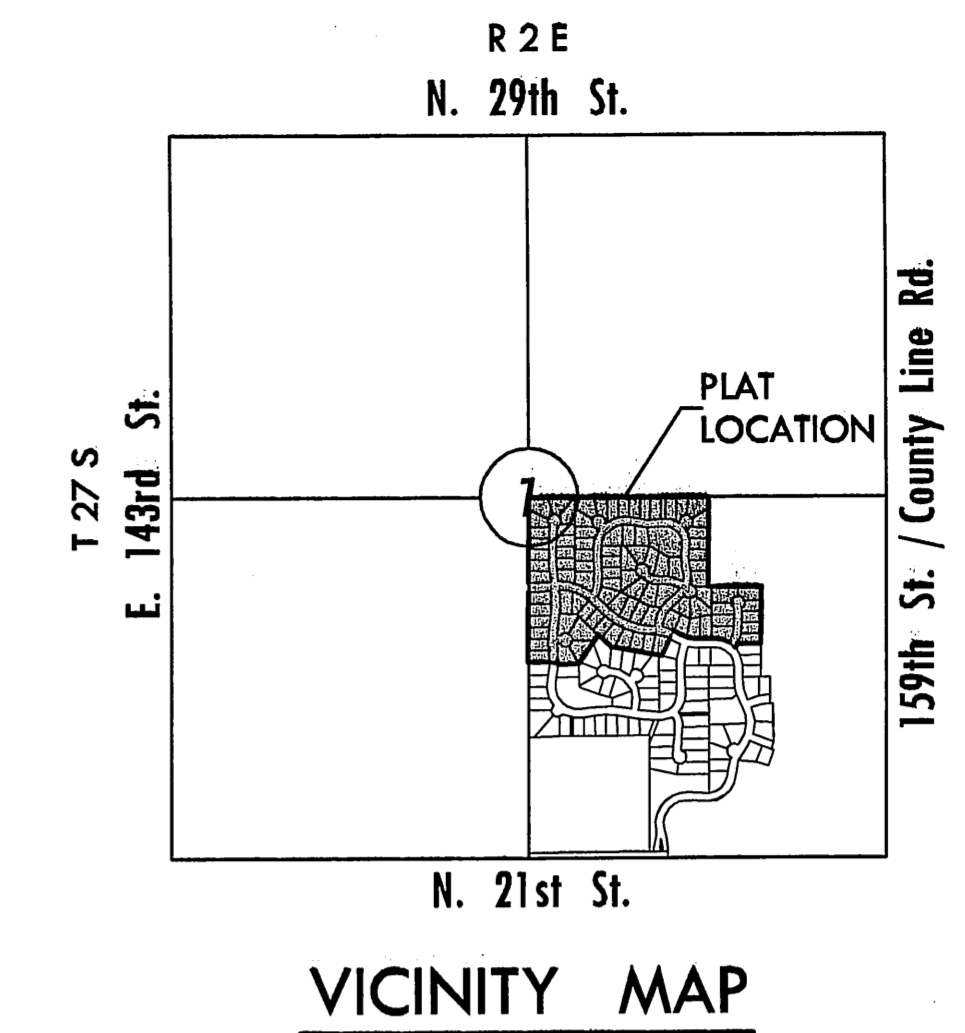
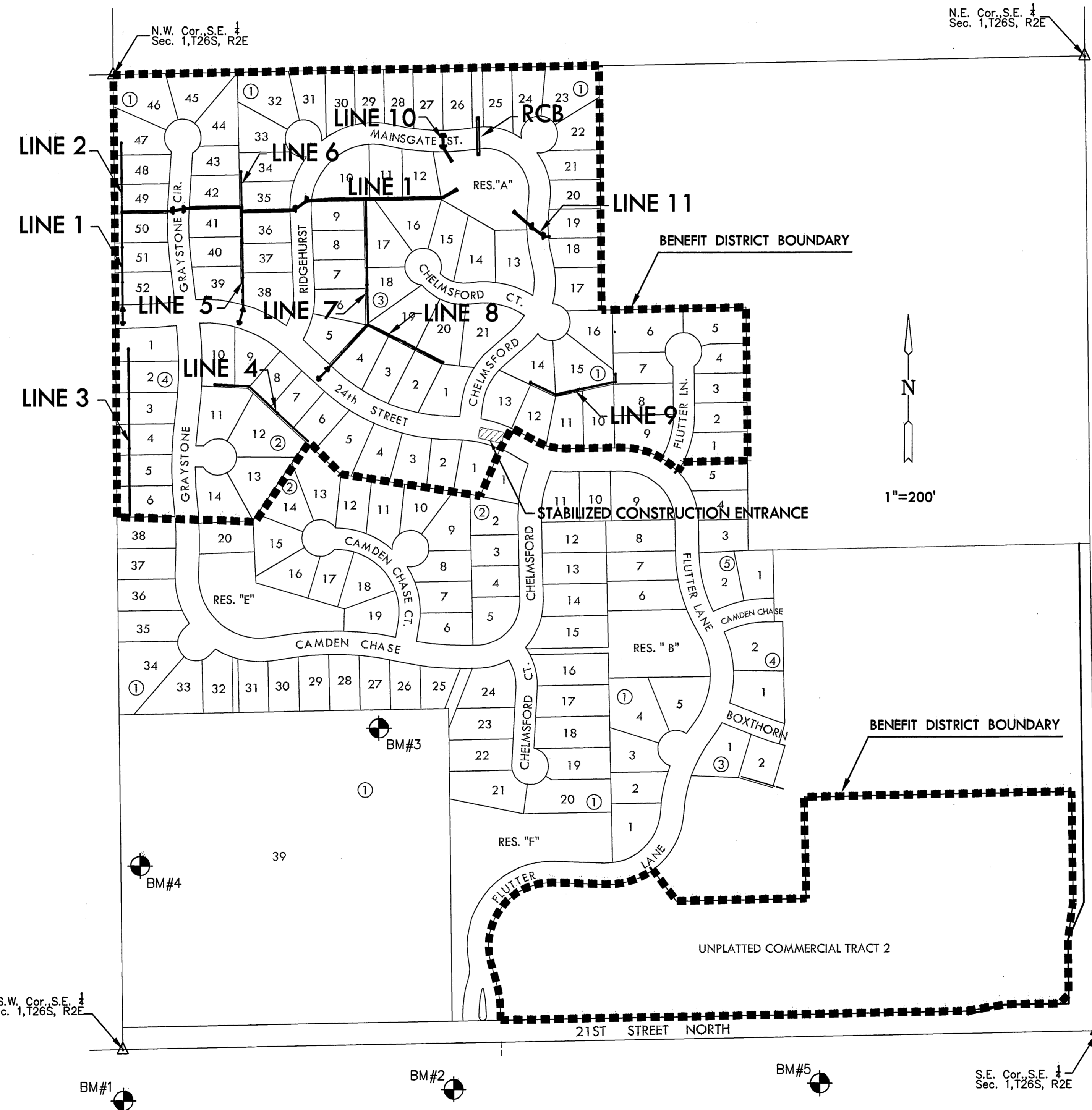
COX COMMUNICATIONS (CABLE)	262-0661
WESTAR (ELECTRIC)	261-6512
KANSAS GAS SERVICE (GAS)	832-3101
SBC (TELEPHONE)	800-870-8390
CITY OF WICHITA WATER & SEWER	262-6000
AQUILA (GAS)	800-303-0357

- RUBBLE FROM THE REMOVAL OF MISCELLANEOUS STRUCTURES AND EXCESS EXCAVATION WHICH IS TO BE WASTED SHALL BE DISPOSED OF ON SITES TO BE PROVIDED BY THE CONTRACTOR. THESE SITES SHALL BE APPROVED BY THE ENGINEER AS TO SUITABILITY, APPEARANCE AND SITE LOCATION. LOCATIONS THAT, IN THE OPINION OF THE ENGINEER, WILL LEAVE AN UNSIGHTLY APPEARANCE WILL NOT BE APPROVED. ALL DISPOSAL SITES MUST BE APPROVED BY THE KANSAS DEPARTMENT OF HEALTH AND ENVIRONMENT. MATERIAL EITHER STOCKPILED OR DISPOSED OF IN A FLOOD PLAIN WOULD REQUIRE A KANSAS STATE BOARD OF AGRICULTURE PERMIT. ANY MATERIAL DUMPED IN WATERS OF THE UNITED STATES OR WETLANDS IS SUBJECT TO U.S. CORPS OF ENGINEERS PERMITTING REGULATIONS. ANY MATERIAL BURIED OR STOCKPILED BEYOND APPROVED CONSTRUCTION LIMITS WOULD REQUIRE ADDITIONAL ARCHAEOLOGICAL INVESTIGATIONS UNLESS BURIED IN A PREVIOUSLY APPROVED BORROW LOCATION.
- REFER TO SHEET 17 FOR SEEDING REQUIREMENTS.
- REFER TO SHEET 20 FOR SEEDING REQUIREMENTS.
- CONTRACTOR TO COORDINATE CONSTRUCTION OF STORM WATER SEWER WITH OTHER CONSTRUCTION ACTIVITIES ON SITE. THIS INCLUDES SANITARY SEWER AND WATER DISTRIBUTION PROJECTS SCHEDULED TO BE COMPLETED APRIL 4TH, 2008.
- DEVELOPER FOR THIS PROJECT IS:
RITCHIE ASSOCIATES
8100 E. 22ND NORTH, #1000
WICHITA, KS 67226
CONTACT - ROB RAMSEYER
(316) 684-7300

EARTHWORK TABULATIONS:

	EXCAVATION
EXCAVATION	17,200 CY
COMPACTION (95%)	28,500 CY
CONTRACTOR FURNISH	15,575 CY

NOTE: 15% HAS BEEN ADDED TO EXCAVATION QUANTITIES TO ALLOW FOR COMPACTION AND HANDLING.



INDEX TO DRAWINGS

SHEET NO.	DESCRIPTION
1	TITLE SHEET
2-5	DETAILS
6-8	LINE 1
9	LINE 2 & 4
10	LINE 3
11	LINE 5 & 6
12	LINE 7
13	LINE 7 & 8
14	LINE 9 & 10
15	LINE 11 & RCB
16	RCB DETAILS
17-19	GRADING PLAN
20	SEEDING PLAN
21	BUBBLE MAP
22-26	BMP DETAILS
27	FINAL PLAT

BENCHMARKS

- BM#1 Railroad spike in north side of power pole, 48' south of the South Quarter corner of Sec. 1, T27S, R2E. Elev. = 1364.78 NGVD 29
- BM#2 Railroad spike in north side of power pole, 92.4' east and 50' south of the South Quarter corner of Sec. 1, T27S, R2E. Elev. = 1372.64 NGVD 29
- BM#3 Top of fence T-post 6" below ground, 204' West and 21' South of the northeast corner of the Lot 39, Blk. 1, 702' east and 889' north of the South Quarter of Sec. 1, T27S, R2E. Elev. = 1371.15 NGVD 29
- BM#4 Top of fence T-post 6" below ground, 436' south and 85' east of the northwest corner of the school site, 473' north and 85' east of the South Quarter corner of Sec. 1, T27S, R2E. Elev. = 1367.80 NGVD 29
- BM#5 Railroad spike in north side of power pole, 1040' west and 51' south of the southeast corner of Section 1, Township 27 South, Range 2 East. Elev. = 1368.50 NGVD 29

MKEC
ENGINEERING
CONSULTANTS, INC.
411 N. WEBB ROAD
WICHITA, KS. 67206
316-684-9600



STORM WATER DRAIN PLANS
MONARCH LANDING SECOND
PHASE 1

TITLE SHEET
SHEET TITLE
468-84434
PROJECT NUMBER

DFL / SMS / GJA
DESIGNED / DRAWN / CHECKED

ISSUED
February 2008

REVISED

REVISIONS

SHEET NO.
1 of 27

PLOT108: Wednesday, February 06, 2008 @ 10:44AM

JA:GJLA:06201\07165 SWR\PHASE 1\07165_DT.DWG