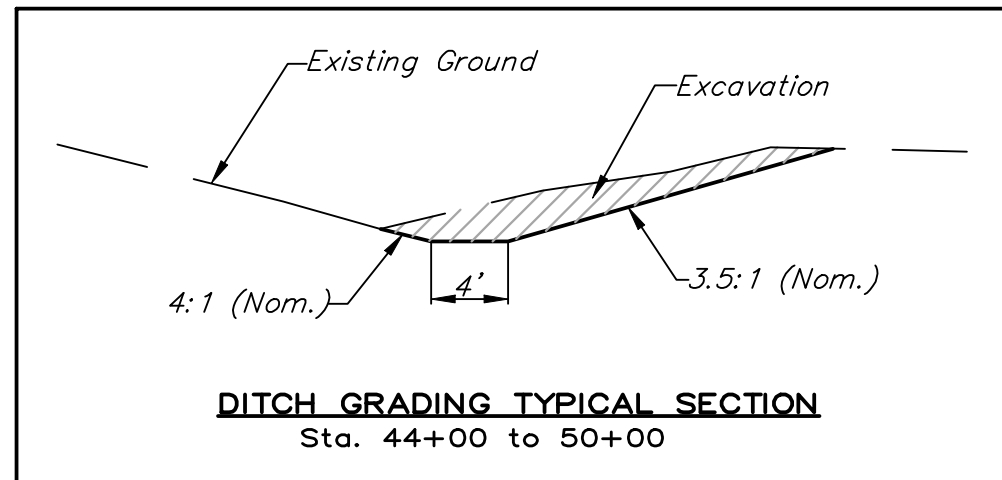
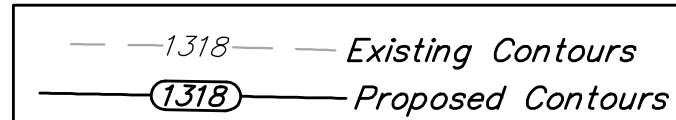


**BENCHMARK:**  
 BM # 1 - City of Wichita Disc in the Northwest Corner of 37th Street North and Womer Elev. = 1324.06 MSL  
 BM # 2 - "C" Cut on the Top of Curb in the NE Corner of the Parking Lot for The Word of Life Church at 37th Street North & Meridian. Elev. = 1323.11 MSL  
 BM # 3 - RR Spike in the East Face of Light Pole at the Southwest Corner of 34th Street North & Meridian. Elev. = 1320.32 MSL

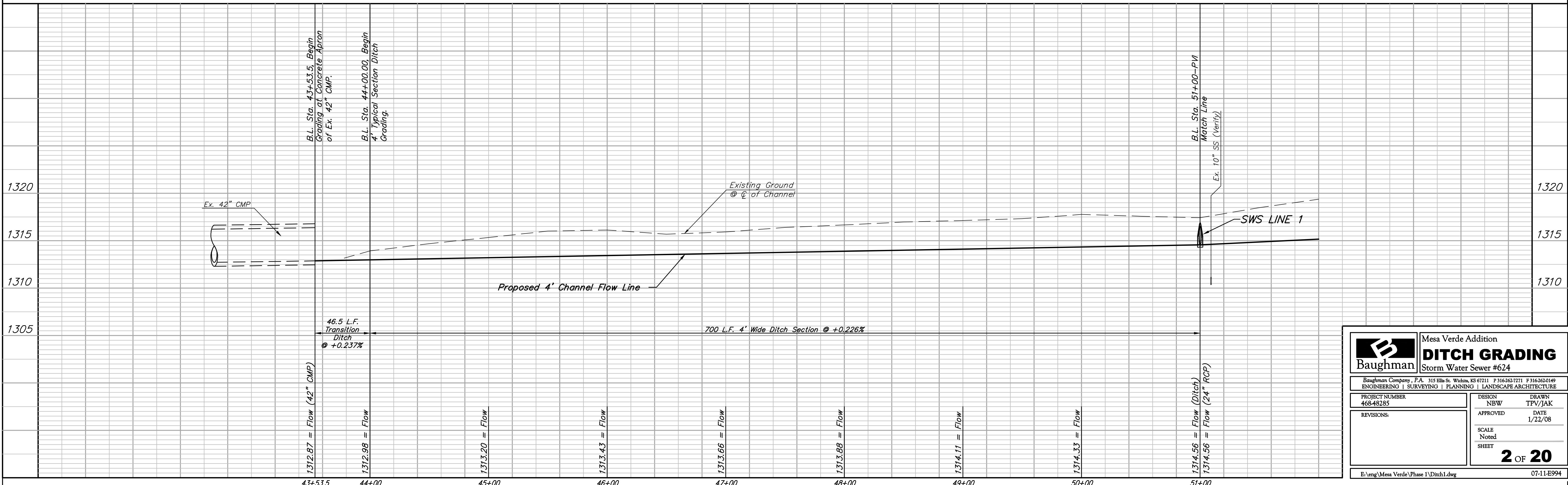
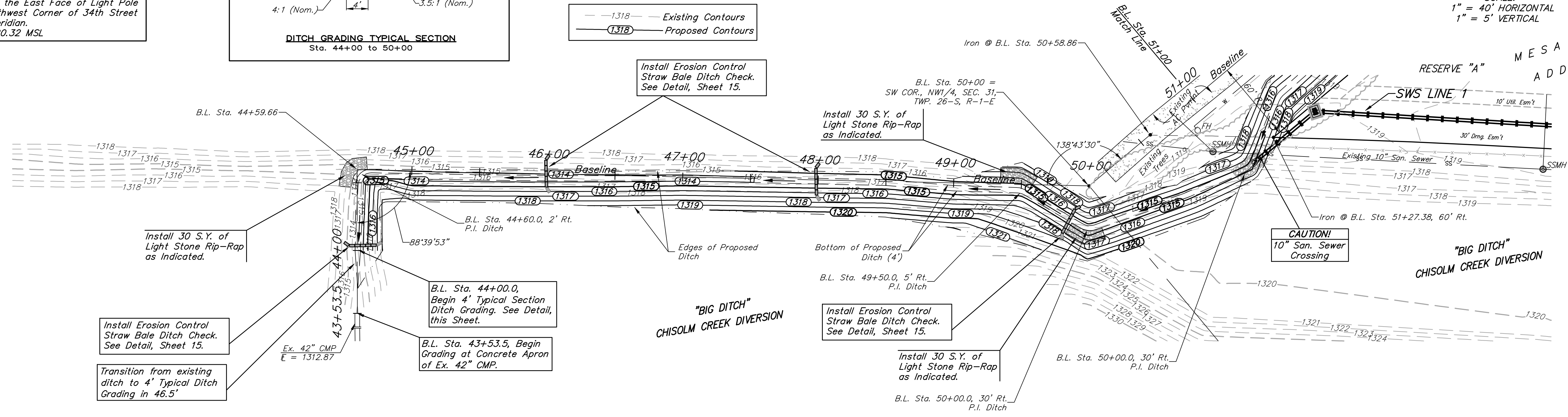


All Excavation to Remain On Site and be Stockpiled within Mesa Verde Addition



SCALE:  
 1" = 40' HORIZONTAL  
 1" = 5' VERTICAL

MESA VERDE ADDITION



		Mesa Verde Addition	
		<b>DITCH GRADING</b>	
Storm Water Sewer #624		<small>Baughman Company, P.A. 315 Ellis St. Wichita, KS 67211 P 316-262-7271 F 316-262-0149          ENGINEERING   SURVEYING   PLANNING   LANDSCAPE ARCHITECTURE</small>	
PROJECT NUMBER 468-48285	DESIGN NBW	DRAWN TPV/JAK	DATE 1/22/08
REVISIONS:	APPROVED	SCALE Noted	SHEET
			<b>2 OF 20</b>
E:\eng\Mesa Verde\Phase 1\Ditch1.dwg			07-11-E994