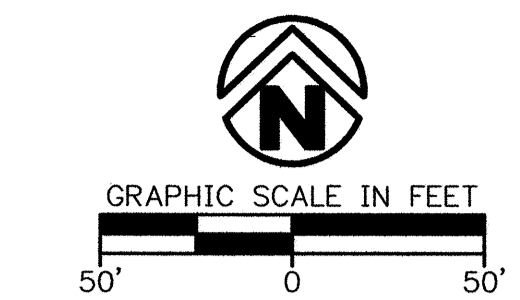


STAKING POINTS				
Pnt #	Northing	Easting	Elevation	Description
5000	5000.27	4638.00	1273.35	Sta. 6+38.00-CL
5001	5000.00	5000.00	1272.44	Sta. 10+00.00-CL
5002	5014.91	5035.07	1272.45	Inlet Inside Corner-TC
5003	5014.90	5040.07	1272.45	Inlet Inside Corner-TC
5004	4984.99	5035.03	1272.45	Inlet Inside Corner-TC
5005	4984.98	5040.03	1272.45	Inlet Inside Corner-TC
5006	5016.28	5369.70	1271.82	SWS MH Center
5007	5013.99	5697.53	1270.20	Inlet Inside Corner-TC
5008	5013.98	5702.52	1270.20	Inlet Inside Corner-TC
5009	4984.07	5697.48	1270.20	Inlet Inside Corner-TC
5010	4984.06	5702.48	1270.20	Inlet Inside Corner-TC
5011	5015.66	5936.20	1269.50	SWS MH Center
5012	4998.66	5963.06		Alta & Hydraulic CL

LEGEND

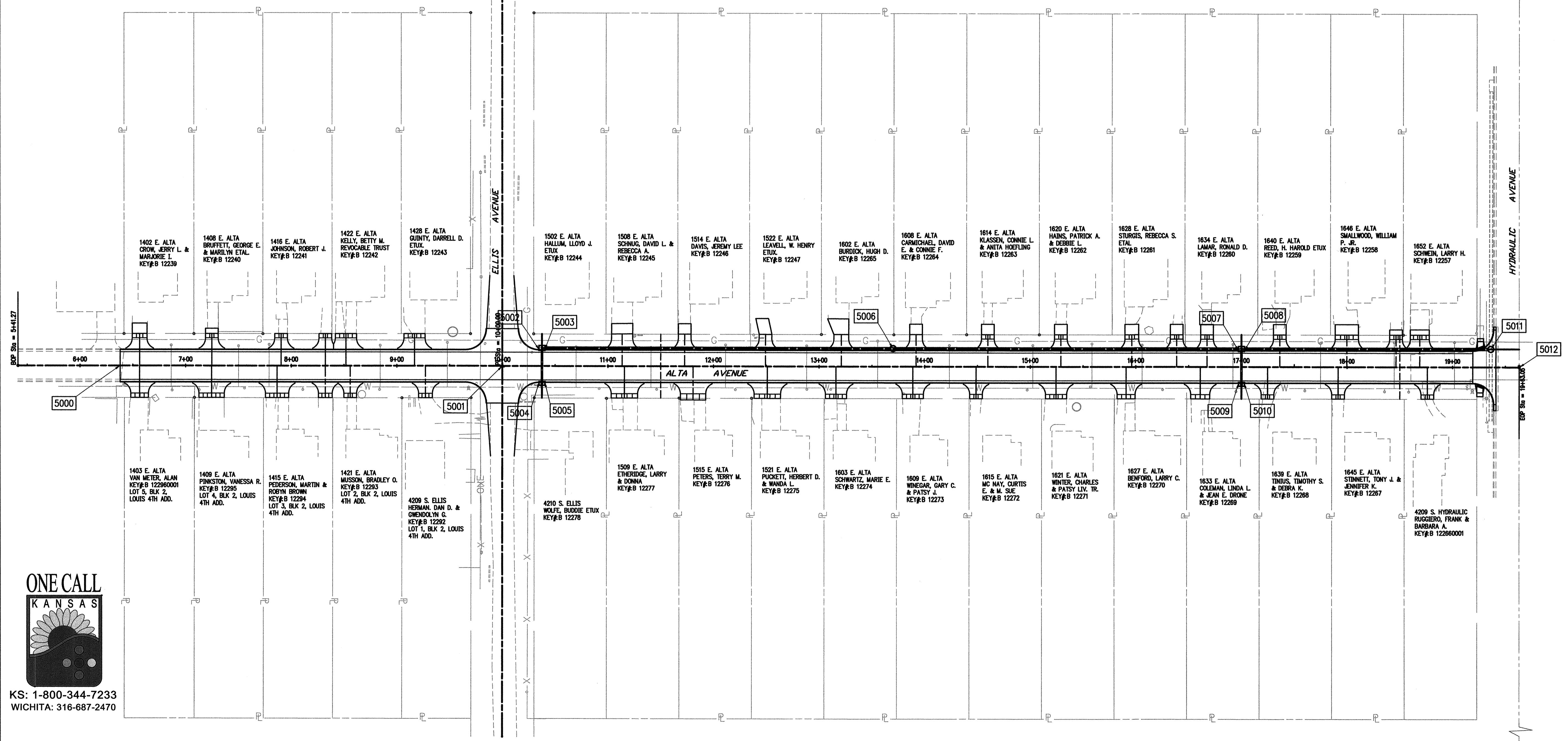
- FOUND IRON PIN
- SET IRON PIN
- ☼ EXISTING LIGHT POLE
- EXISTING POWER POLE
- EXISTING TELEPHONE PEDESTAL
- ⊕ EXISTING WATER VALVE
- ⊕ EXISTING FIRE HYDRANT
- EXISTING WATER METER
- PROPOSED MANHOLE
- EXISTING GAS METER
- EXISTING CURB
- - - EXISTING INTERMEDIATE CONTOUR
- - - EXISTING INDEX CONTOUR
- PROPOSED CURB
- EXISTING SANITARY SEWER LINE (8")
- EXISTING GAS LINE
- EXISTING WATER LINE (SPECIFY SIZE & TYPE)
- EXISTING UNDERGROUND TELEPHONE
- UGE — EXISTING UNDERGROUND ELECTRIC
- UGT (FIBER) — EXISTING FIBER OPTIC
- OHE — EXISTING OVERHEAD ELECTRIC
- UGTV — EXISTING UNDERGROUND TELEVISION
- OHTV — EXISTING OVERHEAD TELEVISION
- EXISTING WOOD FENCE
- X — EXISTING BARBED WIRE FENCE
- EXISTING CHAIN LINK OR WIRE FENCE
- PROPERTY LINE
- BUILDING SET BACK
- EXISTING EASEMENT
- EXISTING RIGHT OF WAY
- GUY ANCHOR
- EXISTING REINFORCED CONCRETE PIPE OR CORRUGATED METAL PIPE
- EXISTING TREE
- TREE TO BE REMOVED



BENCHMARK TABLE	
NUMBER	DESCRIPTION
BM#6	RAILROAD SPIKE IN W. FACE OF P.P., EAST SIDE OF HYDRAULIC & SELMA ST. ELEV.=1277.04
BM#7	RAILROAD SPIKE IN W. FACE OF P.P., E. SIDE OF HYDRAULIC, JUST SOUTH OF ALTA ST. ELEV.=1273.52
BM#7A	RAILROAD SPIKE IN S. FACE OF L.P. NEAR SE PROPERTY CORNER OF #1628 ALTA ST. ELEV.=1271.72
BM#7B	RAILROAD SPIKE IN E. FACE OF P.P. @ NW QUADRANT OF ALTA & ELLIS. ELEV.=1274.59
BM#7C	SQUARE CUT ON TOP OF CURB ON S. SIDE OF ALTA, ±400' WEST OF ELLIS. ELEV.=1273.20

STAKING CONTROL LEGEND

5000 = PROJECT DESIGN CONTROL



DRAWING FILE NAME AND LOCATION: G:\073009-00\ENGIN\DWG\StakingPlan.dwg
 LAST SAVED BY: CW3002 - 1/22/2008 6:21:33 AM
 PLOTTED BY: CHRIS WINKLER (ONLY VALID ON HARD COPY)
 © 2007 Craffon Tull Sparks & Associates, Inc.

ONE CALL KANSAS

KS: 1-800-344-7233
WICHITA: 316-687-2470

Craffon Tull Sparks
 8200 E. 34th Street North, Bldg. 1 600
 Suite 1403, Wichita, KS 67226
 316.634.6776 FAX: 316.634.6777
 www.craffontullsparks.com

architecture | engineering

ALTA STREET DESIGN, 350' WEST OF ELLIS TO HYDRAULIC WICHITA, KANSAS
 C.O.W. PROJ. NO.: 472 84437
 ISSUED FOR CONSTRUCTION

Revision

Drawn by CKW	Job Number 073009-00
Checked by	Contact Person J. MOHLER
Date 1/02/08	Sheet Number C1.02