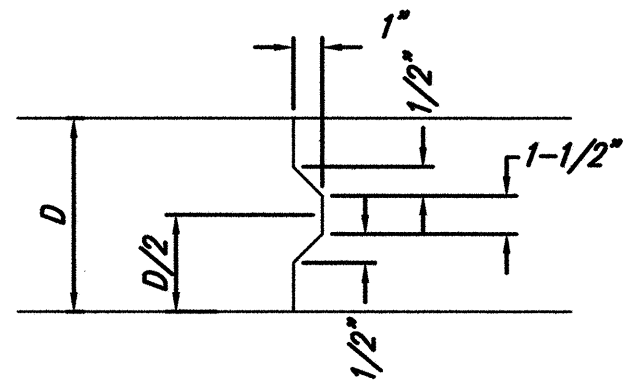
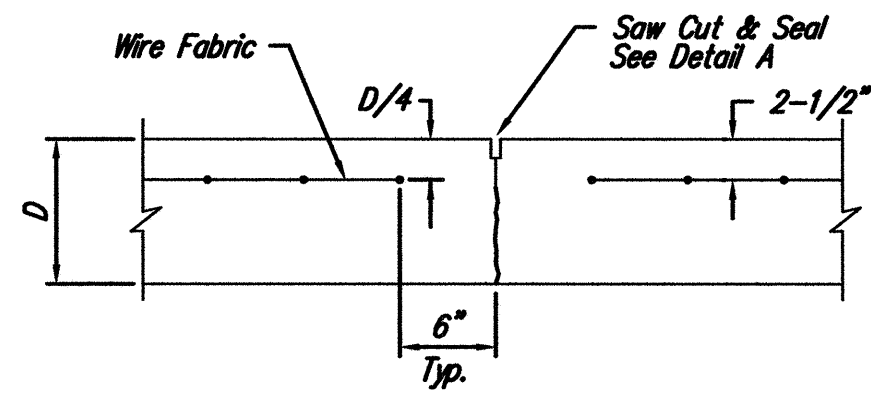


EXPANSION JOINT

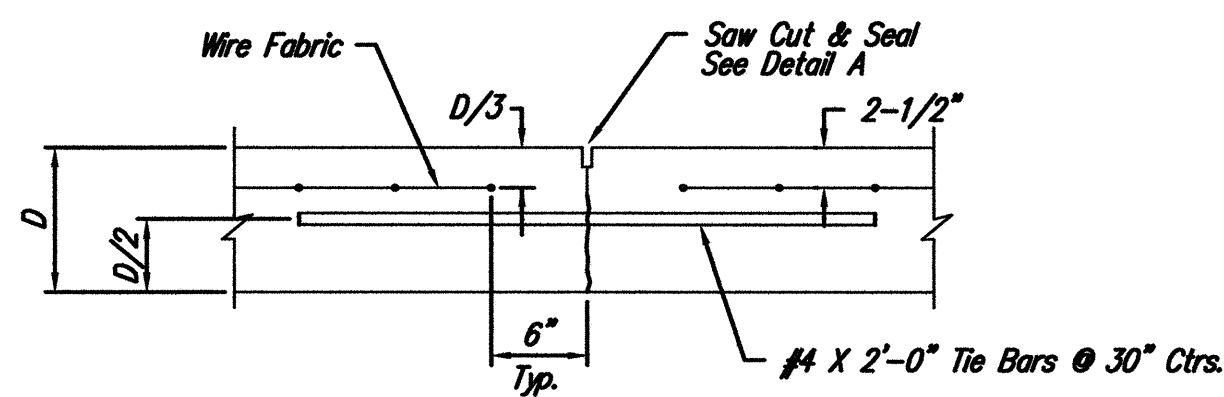
NOTE: Extra Thickness to be Subsidiary to Price of Square Yards Pavement



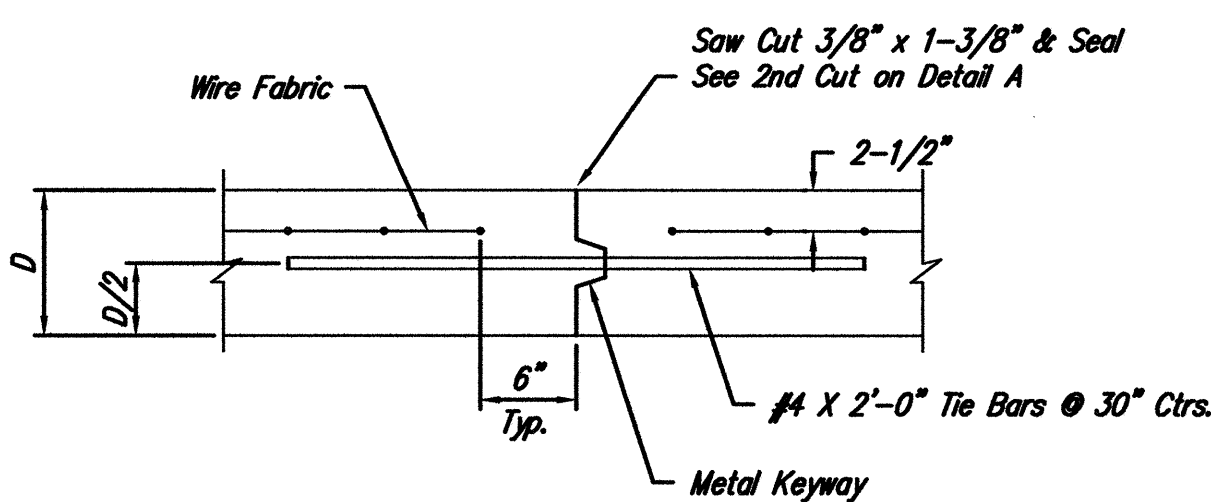
KEYWAY DETAIL



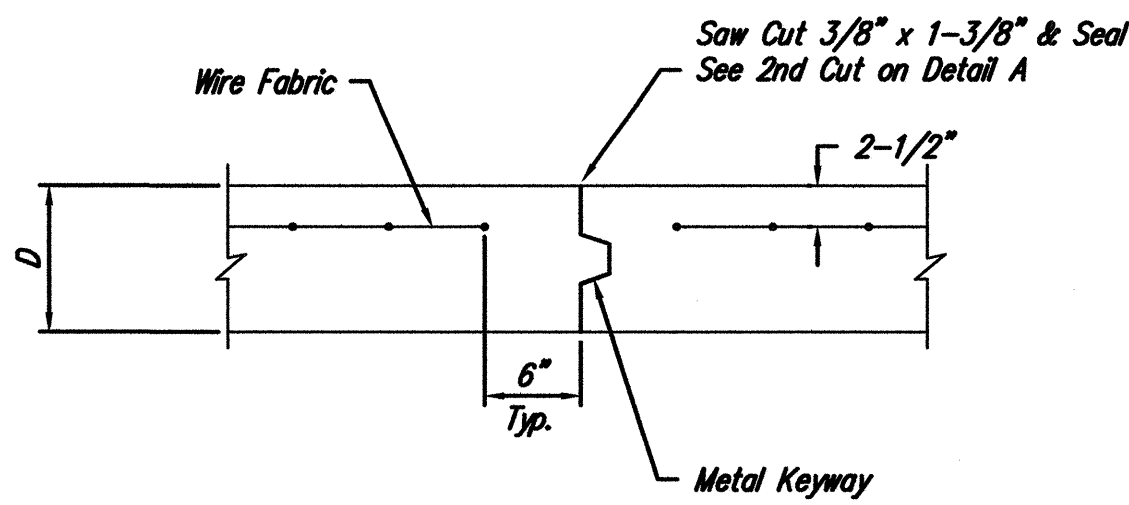
CONTRACTION JOINT DETAIL (C.J.)



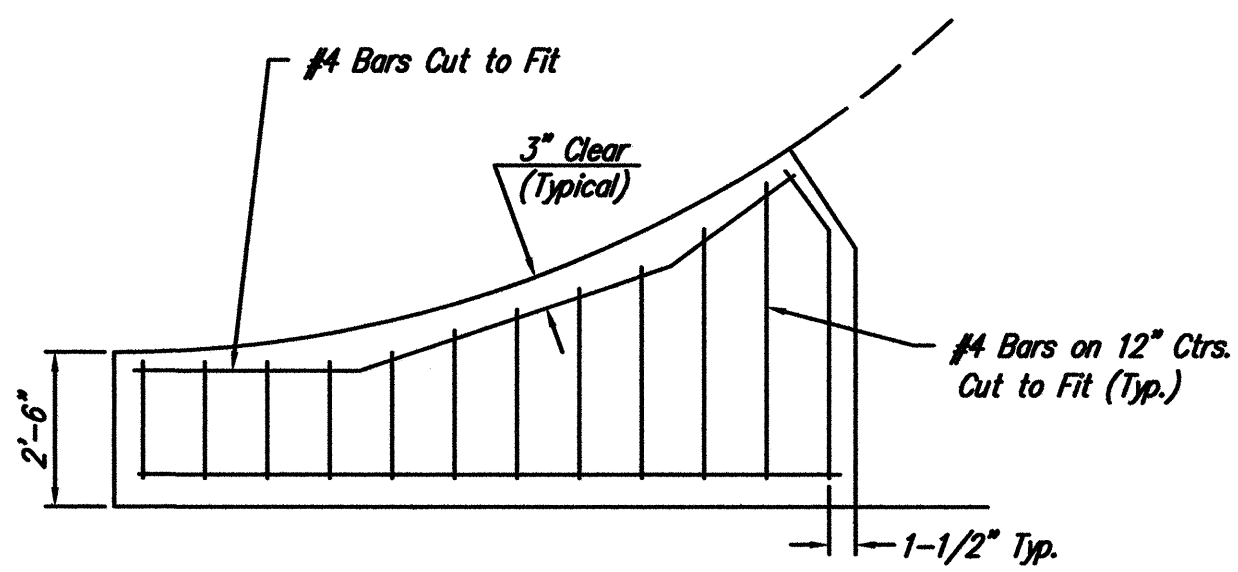
LONGITUDINAL JOINT DETAIL (L.J.)



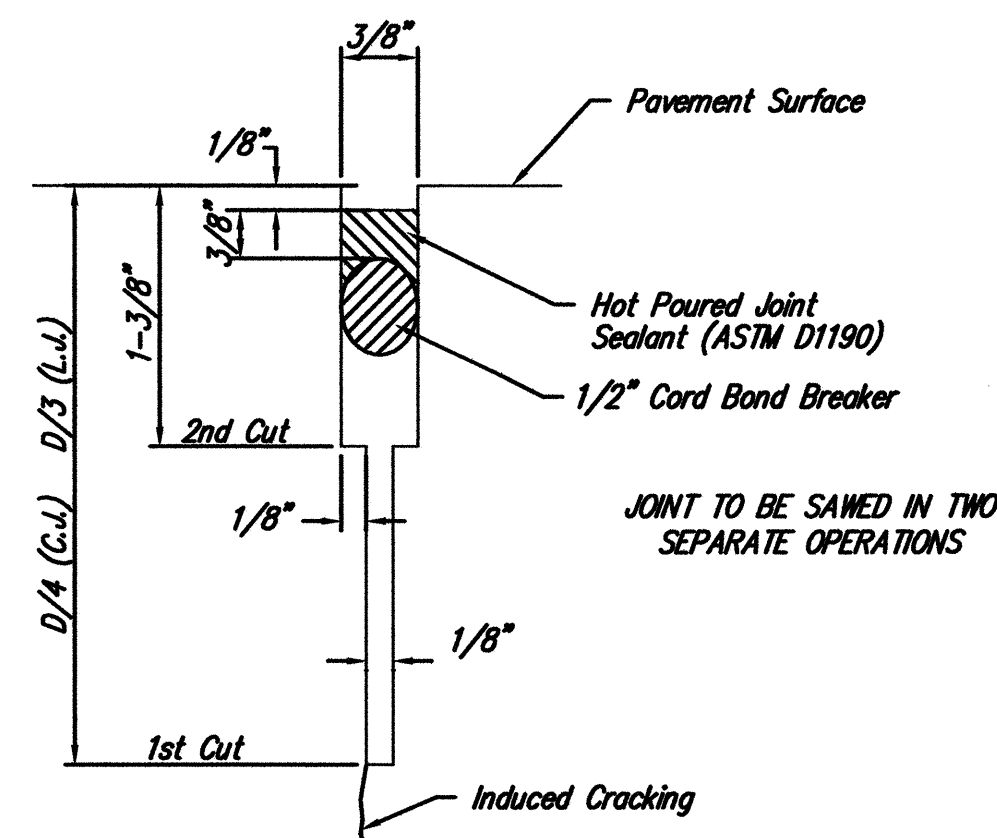
OPTIONAL LONGITUDINAL JOINT DETAIL (L.J.)



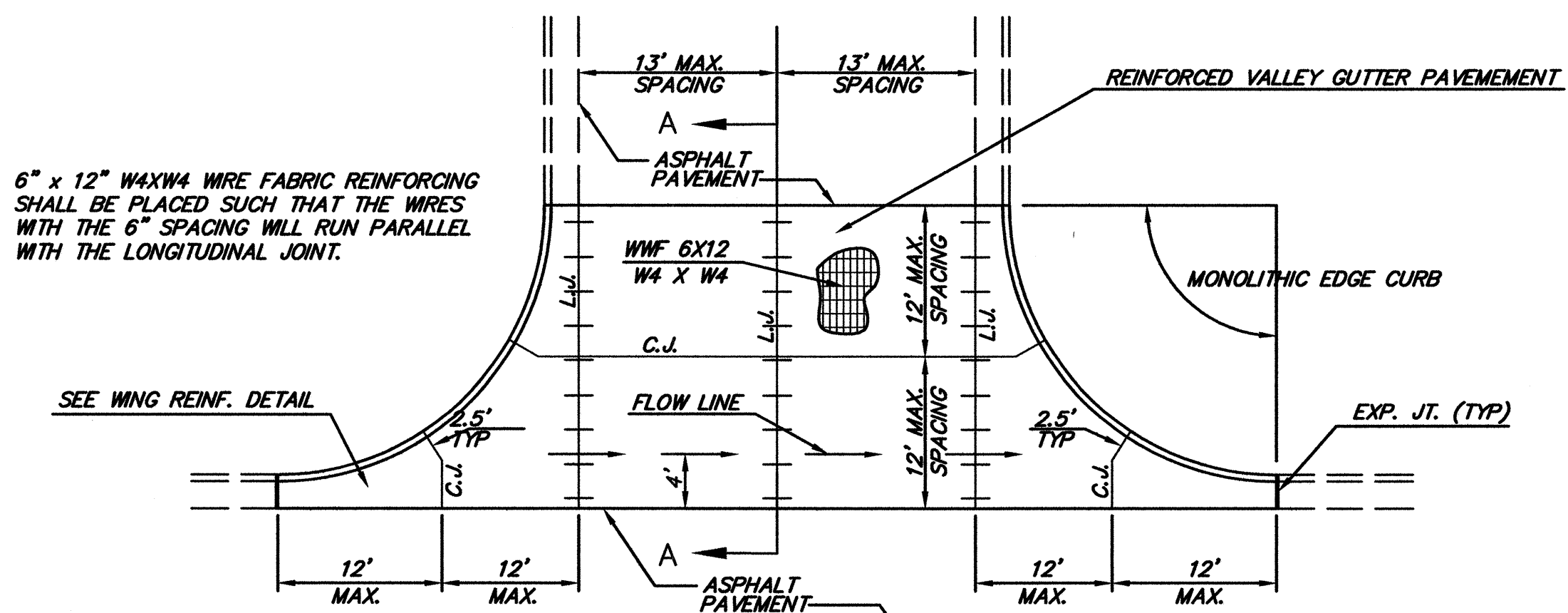
OPTIONAL CONTRACTION JOINT



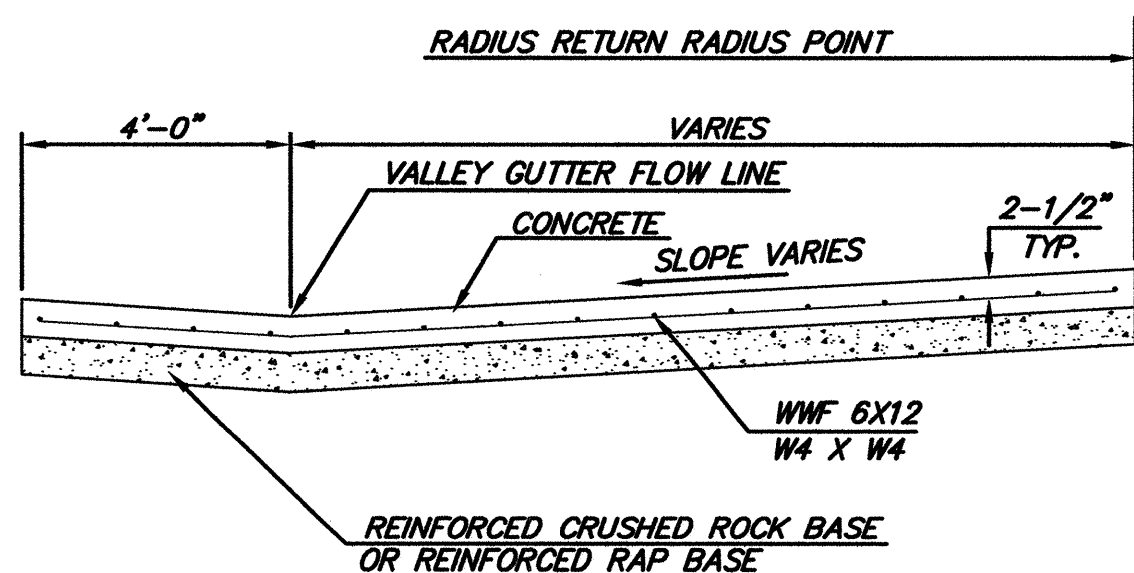
WING REINFORCING DETAIL



SAW JOINT DETAIL



PLAN

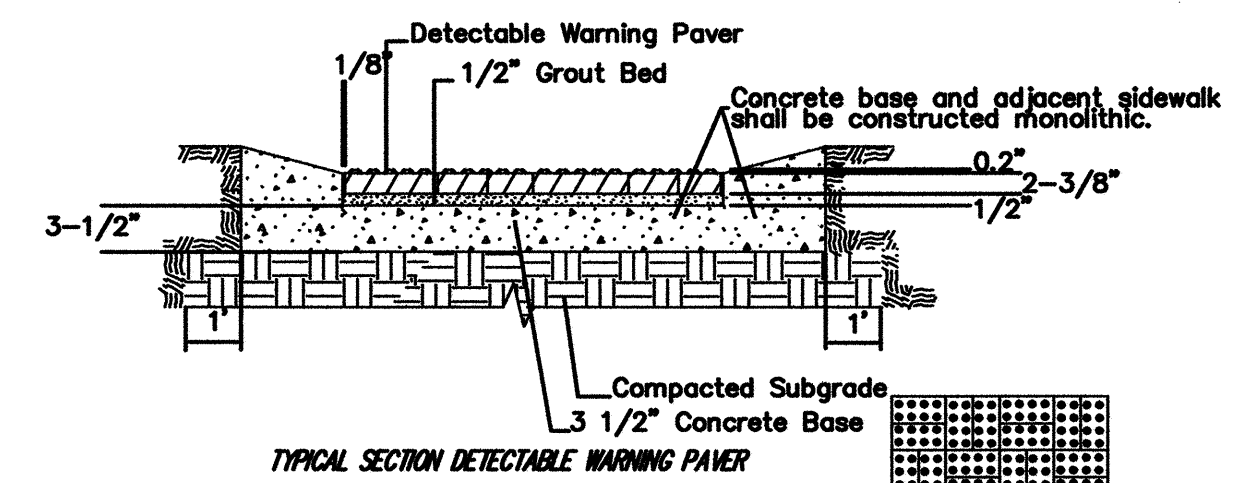
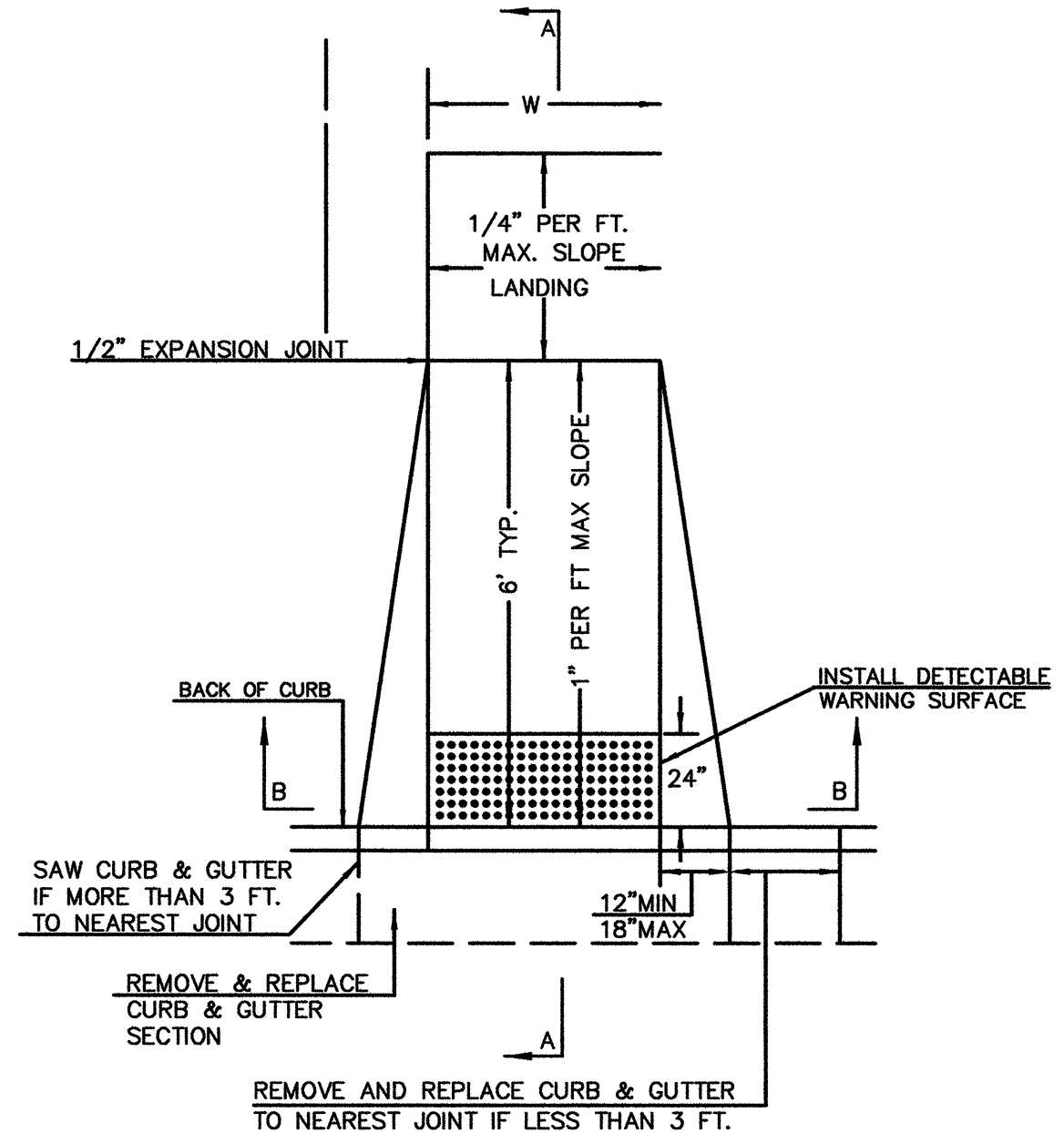


SECTION A-A

REINFORCED VALLEY GUTTER DETAIL

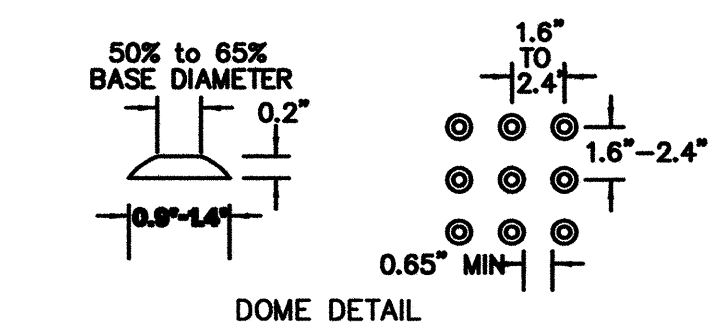
(TYPE A) STANDARD WHEELCHAIR RAMP WITH DETECTABLE WARNING CONSTRUCTION DETAIL FOR STREETS WITH COMBINED CURB & GUTTER

W= 4'0" FOR STANDARD RAMP  
W= 5'0" FOR RAMP AT SCHOOL CROSSWALKS (OR TO MATCH EXISTING)

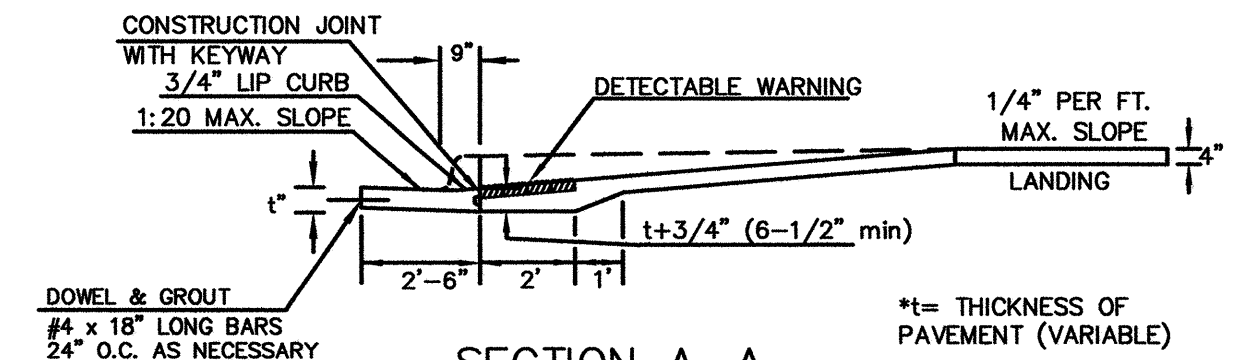


NOTE: RAMPS TO COMPLY WITH LATEST ADAAG GUIDELINES. PAVESTONE DETECTABLE WARNING PAVERS (OR AN APPROVED EQUAL) SHALL BE USED IN ALL WHEELCHAIR RAMPS. THE RED PAVER SHALL BE INSTALLED USING A BASKET WEAVE/PARQUET PATTERN. OTHER PATTERNS MAY BE USED WITH APPROVAL OF ENGINEER. SAND FILL JOINTS. ALIGN DOMES IN THE DIRECTION OF PEDESTRIAN TRAVEL.

SECTION B-B



DOME DETAIL



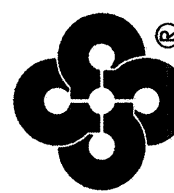
SECTION A-A



VALLEY GUTTER DETAILS WHEELCHAIR RAMP DETAILS

CITY ENGINEER JAMES L. ARMOUR, P.E., L.S. ACTING		
PROJECT NUMBER 472-84437	OCA NUMBER 766159	DATE MM/YY
CITY ENGINEER'S OFFICE CITY HALL - SEVENTH FLOOR 455 NORTH MAIN STREET WICHITA, KANSAS 67202-1620 (316) 268-4501 (316) 268-4114 FAX		
DESIGN ABC	DRAWN DEF	SHEET

Crafton Tull Sparks  
8200 E. 34th Street North, Bldg. 1 600  
Suite 1403, Wichita, KS 67226  
316.634.6776 FAX: 316.634.6777  
www.craftontullsparks.com



architecture | engineering

ALTA STREET DESIGN, 350' WEST OF ELLIS TO HYDRAULIC WICHITA, KANSAS  
C.O.W. PROJ. NO.: 472 84437

ISSUED FOR CONSTRUCTION

Revision

STD. VALLEY GUTTER DETAIL

Drawn by CKW	Job Number 073009-00
Checked by	Contact Person J. MOHLER

Date 1/02/08	Sheet Number C5.02
-----------------	-----------------------

LAYOUT TAB: VALLEY GUTTER DTL

G:\07\3009-00\ENGIN\DWG\valleygutter.dwg

DRAWING FILE NAME AND LOCATION:  
LAST SAVED BY: CV93002, 1/12/2007 3:48:40 PM  
PLOTTED BY: CHRIS WINKLER (ONLY VALID ON HARD COPY)  
© 2007 Crafton, Tull, Sparks & Associates, Inc.