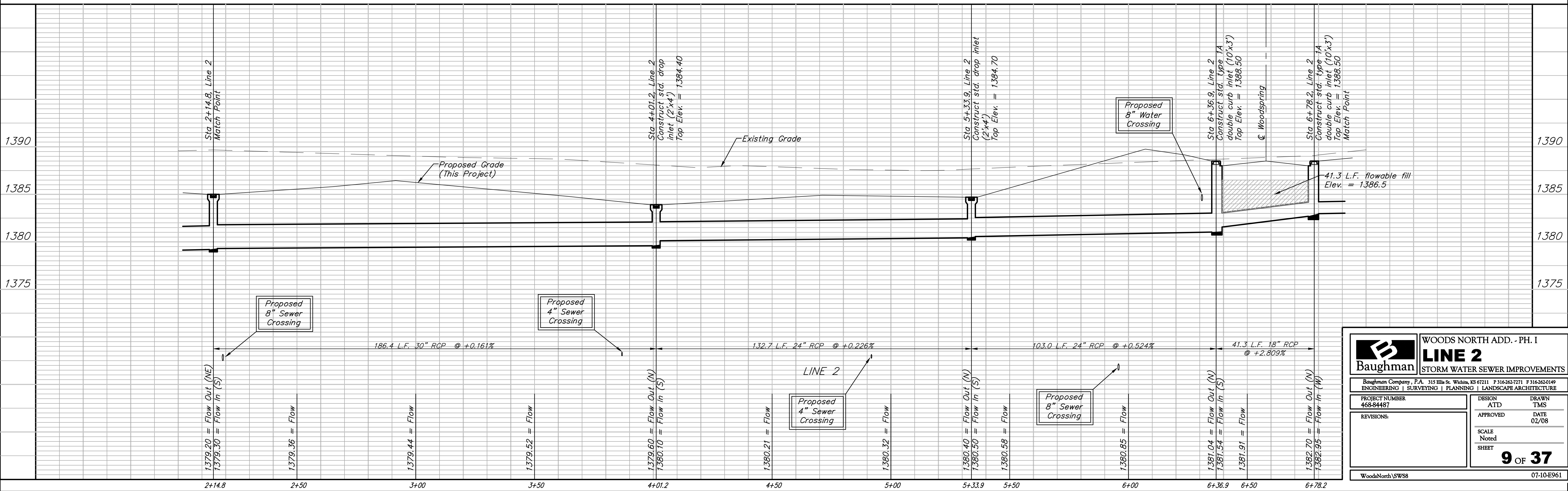
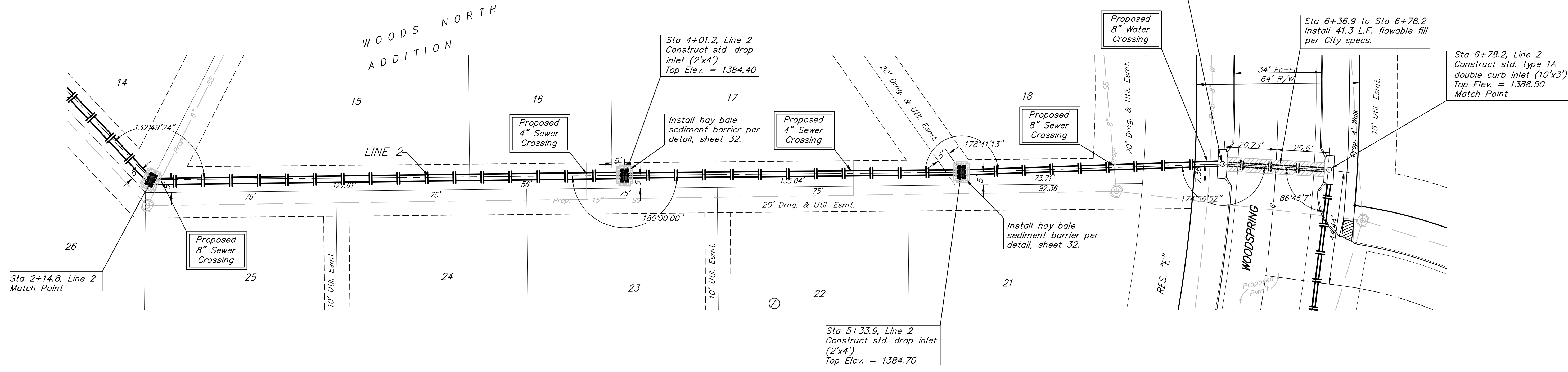


BENCHMARK:
 CROSS CUT ON NORTH
 END OF WEST HEADWALL
 137.5' SOUTH & 12' WEST
 OF THE INTERSECTION OF
 29TH ST N & 127TH ST E.
 ELEV. = 1382.45 NAVD88

Scale: 1" = 20' Horizontal
 1" = 5' Vertical
 • = Iron



Baughman		WOODS NORTH ADD. - PH. I	
ENGINEERING SURVEYING PLANNING LANDSCAPE ARCHITECTURE		LINE 2	
PROJECT NUMBER 468-84487		DESIGN ATD	
REVISIONS:		DRAWN TMS	
		APPROVED DATE 02/08	
		SCALE Noted	
		SHEET 9 OF 37	
WoodsNorthLSWS8		07-10-E961	