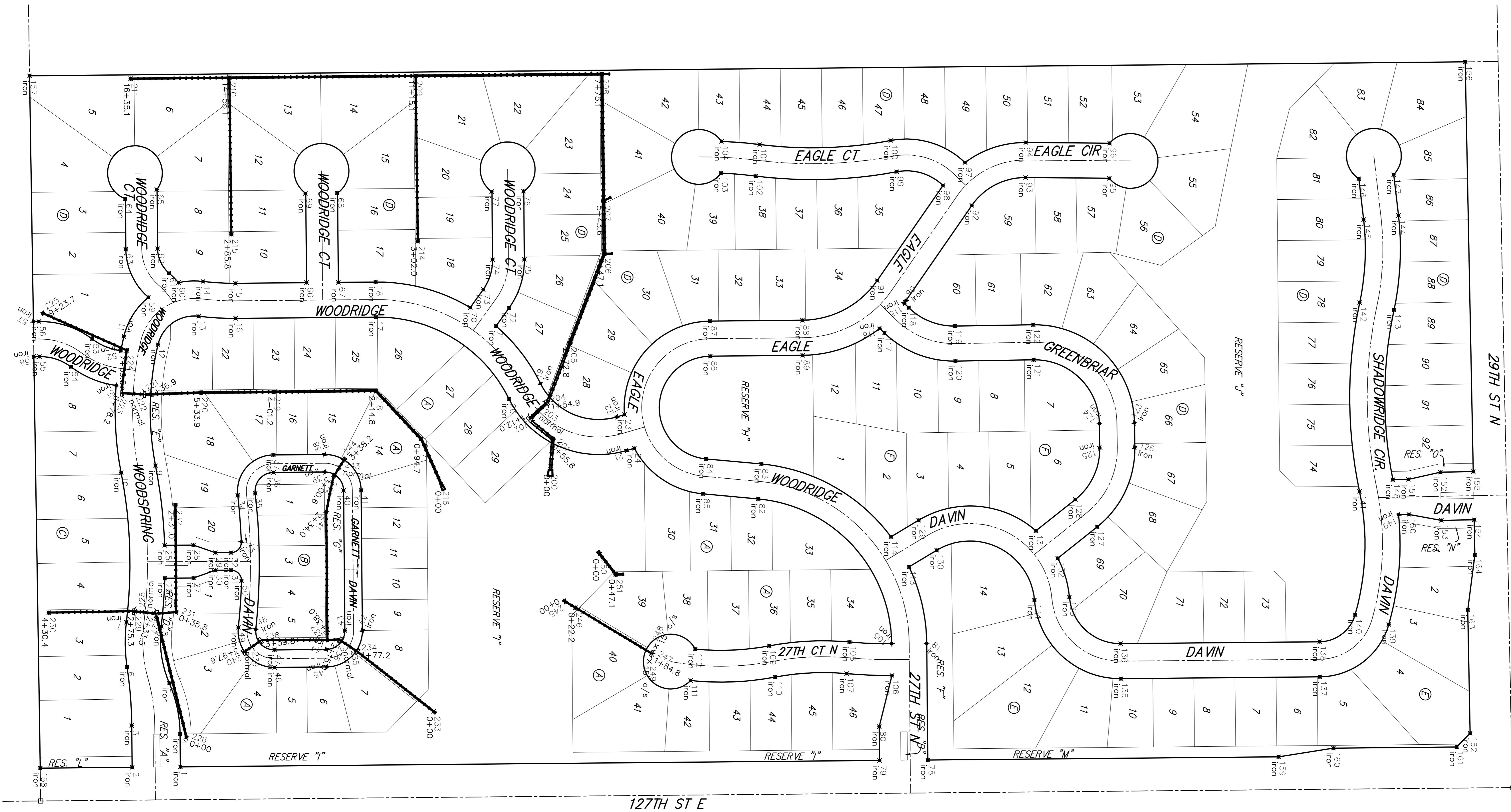




Scale: 1" = 150'

STORM WATER SEWER			
No.	Northing	Easting	Desc
200	8268.9230	20609.0142	0+00
201	8273.1581	20553.3837	0+55.8
202	8232.7954	20514.6115	1+12.0
203	8246.6598	20501.6921	normal
204	8260.8805	20488.4408	1+54.9
205	8304.4873	20377.4527	2+72.8
206	8367.0497	20214.8012	4+47.1
207	8365.7728	20118.3014	5+43.6
208	8362.7100	19886.8278	7+75.1
209	8022.7240	19890.1361	11+15.1
210	7682.7380	19893.4443	14+55.1
211	7502.7454	19895.1957	16+35.1
214	8026.7201	20192.1397	3+02.0
215	7686.5195	20179.2271	2+85.8
216	8071.1590	20639.2894	0+00
217	8032.4511	20552.8486	0+94.7
218	7950.0099	20465.5031	2+14.8
219	7763.5926	20467.2016	4+01.2
220	7630.9330	20468.4104	5+33.9
221	7526.4723	20471.6249	6+36.9
222	7507.2688	20470.5455	normal
223	7489.1954	20469.4733	6+78.2
224	7495.5353	20391.1955	7+56.9
225	7343.0480	20323.6867	9+23.7
226	7604.7003	21098.8699	0+00
227	7548.1465	20871.6483	2+33.5
228	7529.3210	20869.7858	normal
229	7509.9979	20867.8740	2+75.3
230	7353.3999	20870.0970	4+30.4
231	7585.8543	20869.0054	0+35.8
232	7584.4502	20673.8532	2+31.0
233	8055.5650	21050.7240	0+00
234	7914.9173	20940.5048	1+77.2
235	7901.1333	20931.2389	normal
236	7886.0175	20921.0777	2+15.0
237	7861.7923	20920.3401	2+38.0
238	7738.7386	20922.2893	3+59.8
239	7723.7587	20932.6498	normal
240	7710.0986	20942.0975	3+97.6
241	7859.6601	20686.3354	2+34.0
242	7874.3090	20619.8749	3+00.6
243	7883.6142	20604.8368	normal
244	7892.5013	20590.4746	3+38.2
245	8295.3700	20849.6749	0+00
246	8314.4206	20861.0902	0+22.2
247	8455.2752	20945.3218	1+84.8
248	8461.2112	20931.5463	15' o/s
249	8449.3392	20959.0972	15' o/s
250	8358.9932	20763.2368	0+00
251	8388.0265	20800.3719	0+47.1



No.	Northing	Easting	Desc
1	8358.9932	20763.2368	0+00
2	8449.3392	20959.0972	15' o/s
3	8461.2112	20931.5463	15' o/s
4	8455.2752	20945.3218	1+84.8
5	8314.4206	20861.0902	0+22.2
6	8295.3700	20849.6749	0+00
7	7892.5013	20590.4746	3+38.2
8	7883.6142	20604.8368	normal
9	7874.3090	20619.8749	3+00.6
10	7859.6601	20686.3354	2+34.0
11	7710.0986	20942.0975	3+97.6
12	7723.7587	20932.6498	normal
13	7738.7386	20922.2893	3+59.8
14	7861.7923	20920.3401	2+38.0
15	7886.0175	20921.0777	2+15.0
16	7901.1333	20931.2389	normal
17	7914.9173	20940.5048	1+77.2
18	8055.5650	21050.7240	0+00
19	7584.4502	20673.8532	2+31.0
20	7585.8543	20869.0054	0+35.8
21	7353.3999	20870.0970	4+30.4
22	7509.9979	20867.8740	2+75.3
23	7529.3210	20869.7858	normal
24	7548.1465	20871.6483	2+33.5
25	7604.7003	21098.8699	0+00
26	7343.0480	20323.6867	9+23.7
27	7495.5353	20391.1955	7+56.9
28	7489.1954	20469.4733	6+78.2
29	7507.2688	20470.5455	normal
30	7526.4723	20471.6249	6+36.9
31	7630.9330	20468.4104	5+33.9
32	7763.5926	20467.2016	4+01.2
33	7950.0099	20465.5031	2+14.8
34	8032.4511	20552.8486	0+94.7
35	8071.1590	20639.2894	0+00
36	7686.5195	20179.2271	2+85.8
37	8026.7201	20192.1397	3+02.0
38	7502.7454	19895.1957	16+35.1
39	8022.7240	19890.1361	11+15.1
40	8362.7100	19886.8278	7+75.1
41	8365.7728	20118.3014	5+43.6
42	8367.0497	20214.8012	4+47.1
43	8304.4873	20377.4527	2+72.8
44	8260.8805	20488.4408	1+54.9
45	8273.1581	20553.3837	0+55.8
46	8268.9230	20609.0142	0+00
47	8232.7954	20514.6115	1+12.0
48	8246.6598	20501.6921	normal
49	8260.8805	20488.4408	1+54.9
50	8304.4873	20377.4527	2+72.8
51	8367.0497	20214.8012	4+47.1
52	8365.7728	20118.3014	5+43.6
53	8362.7100	19886.8278	7+75.1
54	8022.7240	19890.1361	11+15.1
55	7682.7380	19893.4443	14+55.1
56	7502.7454	19895.1957	16+35.1
57	8026.7201	20192.1397	3+02.0
58	7686.5195	20179.2271	2+85.8
59	8071.1590	20639.2894	0+00
60	8032.4511	20552.8486	0+94.7
61	7950.0099	20465.5031	2+14.8
62	7763.5926	20467.2016	4+01.2
63	7630.9330	20468.4104	5+33.9
64	7526.4723	20471.6249	6+36.9
65	7507.2688	20470.5455	normal
66	7489.1954	20469.4733	6+78.2
67	7495.5353	20391.1955	7+56.9
68	7343.0480	20323.6867	9+23.7
69	7604.7003	21098.8699	0+00
70	7548.1465	20871.6483	2+33.5
71	7529.3210	20869.7858	normal
72	7509.9979	20867.8740	2+75.3
73	7353.3999	20870.0970	4+30.4
74	7585.8543	20869.0054	0+35.8
75	7584.4502	20673.8532	2+31.0
76	8055.5650	21050.7240	0+00
77	7914.9173	20940.5048	1+77.2
78	7901.1333	20931.2389	normal
79	7886.0175	20921.0777	2+15.0
80	7861.7923	20920.3401	2+38.0
81	7738.7386	20922.2893	3+59.8
82	7723.7587	20932.6498	normal
83	7710.0986	20942.0975	3+97.6
84	7859.6601	20686.3354	2+34.0
85	7874.3090	20619.8749	3+00.6
86	7883.6142	20604.8368	normal
87	7892.5013	20590.4746	3+38.2
88	8295.3700	20849.6749	0+00
89	8314.4206	20861.0902	0+22.2
90	8455.2752	20945.3218	1+84.8
91	8461.2112	20931.5463	15' o/s
92	8449.3392	20959.0972	15' o/s
93	8358.9932	20763.2368	0+00
94	8388.0265	20800.3719	0+47.1
95	8388.0265	20800.3719	0+47.1
96	8388.0265	20800.3719	0+47.1
97	8388.0265	20800.3719	0+47.1
98	8388.0265	20800.3719	0+47.1
99	8388.0265	20800.3719	0+47.1
100	8388.0265	20800.3719	0+47.1
101	8388.0265	20800.3719	0+47.1
102	8388.0265	20800.3719	0+47.1
103	8388.0265	20800.3719	0+47.1
104	8388.0265	20800.3719	0+47.1
105	8388.0265	20800.3719	0+47.1
106	8388.0265	20800.3719	0+47.1
107	8388.0265	20800.3719	0+47.1
108	8388.0265	20800.3719	0+47.1
109	8388.0265	20800.3719	0+47.1
110	8388.0265	20800.3719	0+47.1
111	8388.0265	20800.3719	0+47.1
112	8388.0265	20800.3719	0+47.1
113	8388.0265	20800.3719	0+47.1
114	8388.0265	20800.3719	0+47.1
115	8388.0265	20800.3719	0+47.1
116	8388.0265	20800.3719	0+47.1
117	8388.0265	20800.3719	0+47.1
118	8388.0265	20800.3719	0+47.1
119	8388.0265	20800.3719	0+47.1
120	8388.0265	20800.3719	0+47.1
121	8388.0265	20800.3719	0+47.1
122	8388.0265	20800.3719	0+47.1
123	8388.0265	20800.3719	0+47.1
124	8388.0265	20800.3719	0+47.1
125	8388.0265	20800.3719	0+47.1
126	8388.0265	20800.3719	0+47.1
127	8388.0265	20800.3719	0+47.1
128	8388.0265	20800.3719	0+47.1
129	8388.0265	20800.3719	0+47.1
130	8388.0265	20800.3719	0+47.1
131	8388.0265	20800.3719	0+47.1
132	8388.0265	20800.3719	0+47.1
133	8388.0265	20800.3719	0+47.1
134	8388.0265	20800.3719	0+47.1
135	8388.0265	20800.3719	0+47.1
136	8388.0265	20800.3719	0+47.1
137	8388.0265	20800.3719	0+47.1
138	8388.0265	20800.3719	0+47.1
139	8388.0265	20800.3719	0+47.1
140	8388.0265	20800.3719	0+47.1
141	8388.0265	20800.3719	0+47.1
142	8388.0265	20800.3719	0+47.1
143	8388.0265	20800.3719	0+47.1
144	8388.0265	20800.3719	0+47.1
145	8388.0265	20800.3719	0+47.1
146	8388.0265	20800.3719	0+47.1
147	8388.0265	20800.3719	0+47.1
148	8388.0265	20800.3719	0+47.1
149	8388.0265	20800.3719	0+47.1
150	8388.0265	20800.3719	0+47.1
151	8388.0265	20800.3719	0+47.1
152	8388.0265	20800.3719	0+47.1
153	8388.0265	20800.3719	0+47.1
154	8388.0265	20800.3719	0+47.1
155	8388.0265	20800.3719	0+47.1
156	8388.0265	20800.3719	0+47.1
157	8388.0265	20800.3719	0+47.1
158	8388.0265	20800.3719	0+47.1
159	8388.0265	20800.3719	0+47.1
160	8388.0265	20800.3719	0+47.1
161	8388.0265	20800.3719	0+47.1
162	8388.0265	20800.3719	0+47.1
163	8388.0265	20800.3719	0+47.1
164	8388.0265	20800.3719	0+47.1
165	8388.0265	20800.3719	0+47.1
166	8388.0265	20800.3719	0+47.1
167	8388.0265	20800.3719	0+47.1
168	8388.0265	20800.3719	0+47.1
169	8388.0265	20800.3719	0+47.1
170	8388.0265	20800.3719	0+47.1
171	8388.0265	20800.3719	0+47.1
172	8388.0265	20800.3719	0+47.1
173	8388.0265	20800.3719	0+47.1
174	8388.0265	20800.3719	0+47.1
175	8388.0265	20800.3719	0+47.1
176	8388.0265	20800.3719	0+47.1
177	8388.0265	20800.3719	0+47.1
178	8388.0265	20800.3719	0+47.1
179	8388.0265	20800.3719	0+47.1
180	8388.0265	20800.3719	0+47.1