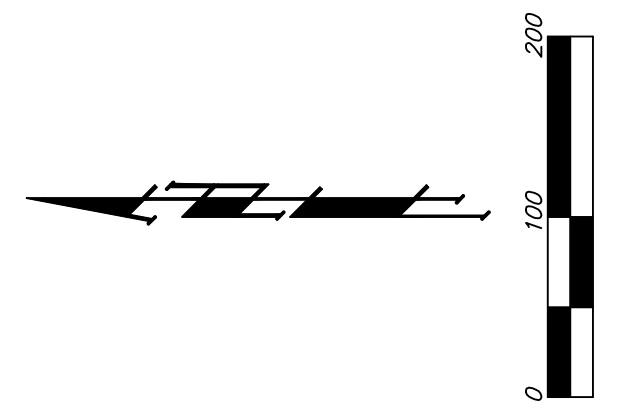


WOODS NORTH ADDITION WICHITA, SEDGWICK COUNTY, KANSAS



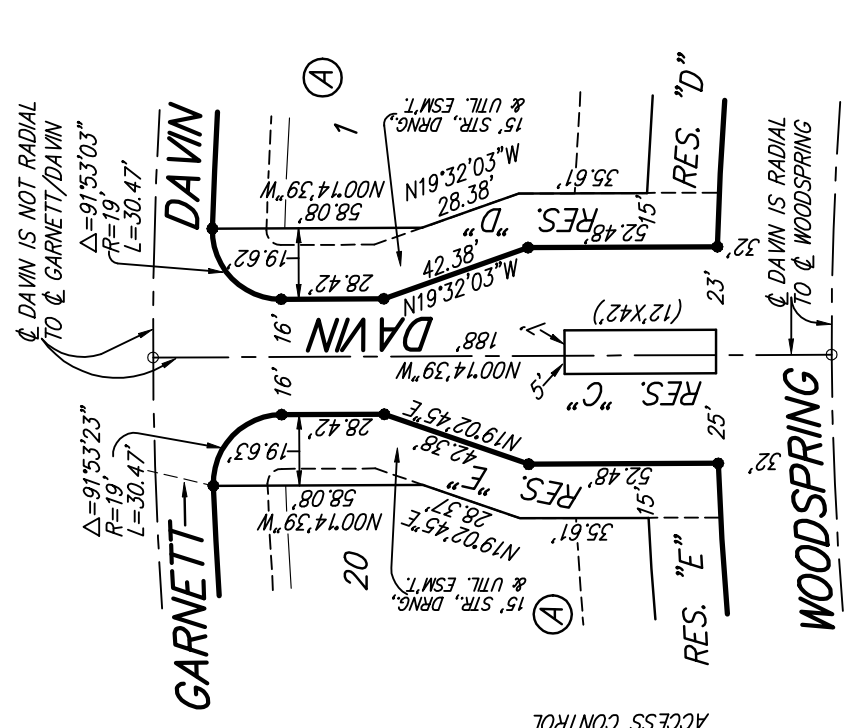
- #4 REBAR W/ "BAUGHMAN" CAP (SET)
- #4 REBAR W/ "BAUGHMAN" CAP (FOUND)
- #6 REBAR OVER & STONE (FOUND)
- #8 REBAR OVER & STONE (FOUND)
- #8 INCH (FOUND)
- #8 INCH IN WADDER OVER STONE (FOUND)

- (M) = MEASURED
- (P) = PLATTED
- (CM) = CALCULATED PER MEASURED INFO.
- (C-P) = CALCULATED PER PLATTED INFO.

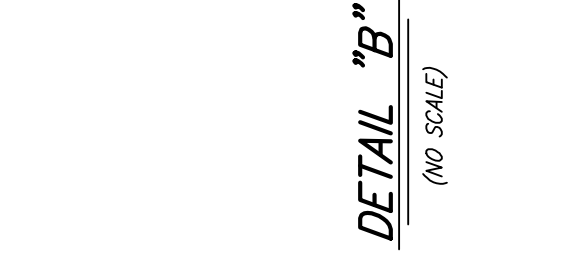
LOT	BLOCK	ELEVATION	MARKER
3-7	A	1380.0	M10208
8-14	A	1385.0	
29-30	A	1385.0	
39-41	A	1385.0	
54-57	D	1388.0	
63-68	D	1388.0	
70-83	D	1388.0	

MINIMUM BUILDING PAD ELEVATIONS FOR LOWEST OPENING TO THE STRUCTURES

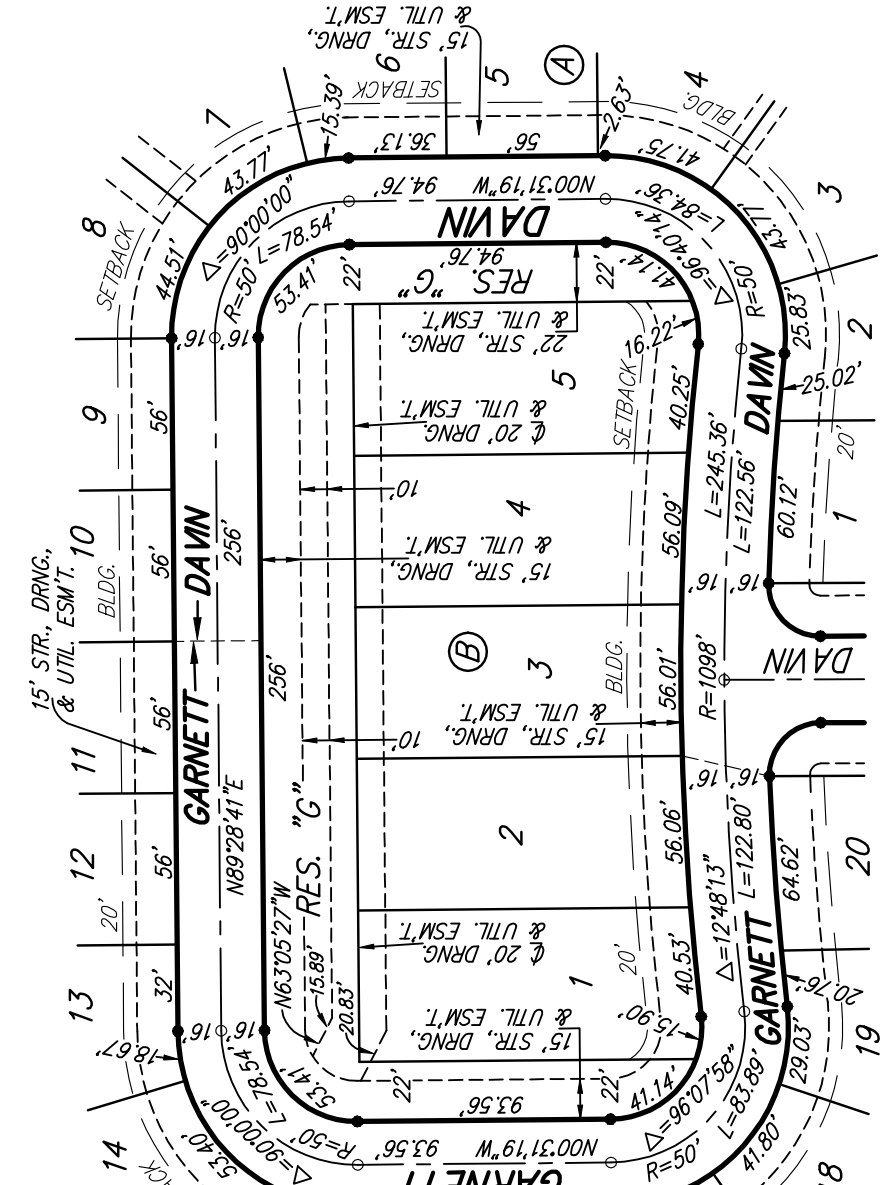
BENCHMARK:
CROSS CUT ON NORTH END OF WEST HEADWALL
137.5' SOUTH & 12' WEST OF THE INTERSECTION
OF 29TH ST. N. & 127TH ST. E.
ELEV. = 1262.45 MVD08



DETAIL "A"
(NO SCALE)



DETAIL "B"
(NO SCALE)



DETAIL "C"
(NO SCALE)

NOTE:
A MASTER GRADING PLAN FOR DRAINAGE HAS BEEN DEVELOPED FOR THIS SUBDIVISION AND IS ON FILE WITH THE CITY OF WICHITA, KANSAS. DRAINAGE DITCHES AND STORM SEWERS ARE TO BE LOCATED WITH THE APPROVAL OF THE CITY ENGINEER OF THE CITY OF WICHITA, KANSAS. NO OBSTRUCTIONS WHICH IMPED THE FLOW OF THIS DRAINAGE SYSTEM SHALL BE ALLOWED.