

CURVE #1
Curve Data Based on Centerline
Rad. = 134' Delta = 58°23'40" Tangent = 74.88'
Arc = 136.57' L.C. = 130.74' Def/Ft. = 12.82737' Min.

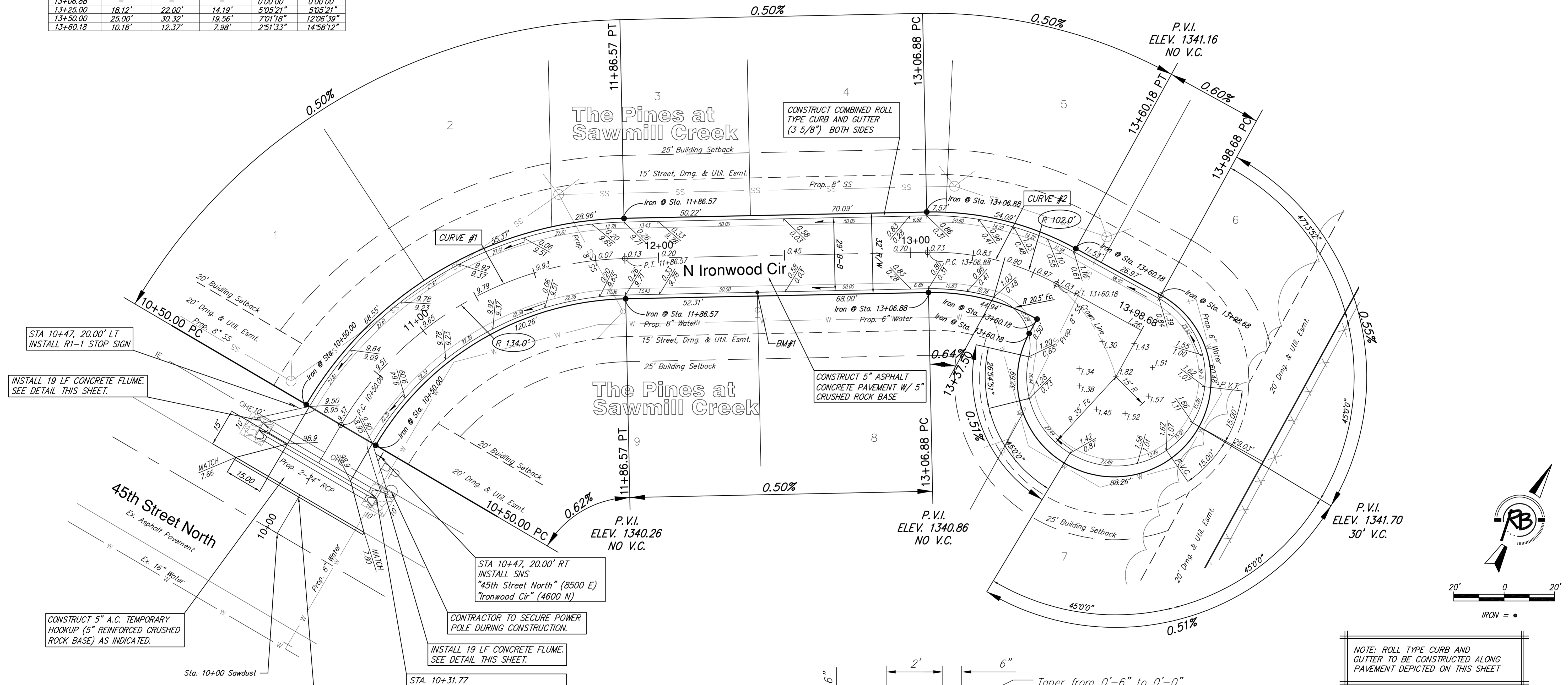
Station	Arc	FACE CHORD LENGTHS		Defl.	T. Defl.
		8 Lt.	8 Rt.		
10+50.00	-	-	-	0'00"00"	0'00"00"
10+75.00	25.00'	29.06'	20.87'	5'20'41"	5'20'41"
11+00.00	25.00'	29.06'	20.87'	5'20'41"	10'41'22"
11+25.00	25.00'	29.06'	20.87'	5'20'41"	16'02'03"
11+50.00	25.00'	29.06'	20.87'	5'20'41"	21'22'44"
11+75.00	25.00'	29.03'	20.87'	5'20'41"	26'43'25"
11+86.57	11.57'	13.47'	9.67'	2'28'29"	29'11'50"

CURVE #2
Curve Data Based on Centerline
Rad. = 102' Delta = 29°56'26" Tangent = 27.27'
Arc = 53.30' L.C. = 52.70' Def/Ft. = 16.85210' Min.

Station	Arc	FACE CHORD LENGTHS		Defl.	T. Defl.
		8 Lt.	8 Rt.		
13+06.88	-	-	-	0'00"00"	0'00"00"
13+25.00	18.12'	22.00'	14.19'	5'05'21"	5'05'21"
13+50.00	25.00'	30.32'	19.56'	7'01'18"	12'06'39"
13+60.18	10.18'	12.37'	7.98'	2'51'33"	14'58'12"

Subdivision Bench Marks

No.	Street and Station	From CL	Description	Elevation
1	Sawdust, Sta. 12+38.88	14.50' Rt.	Top of curb at the common lot line of Lots 8 & 9 on Sawdust.	



STA 10+47, 20.00' LT
INSTALL R1-1 STOP SIGN

INSTALL 19 LF CONCRETE FLUME.
SEE DETAIL THIS SHEET.

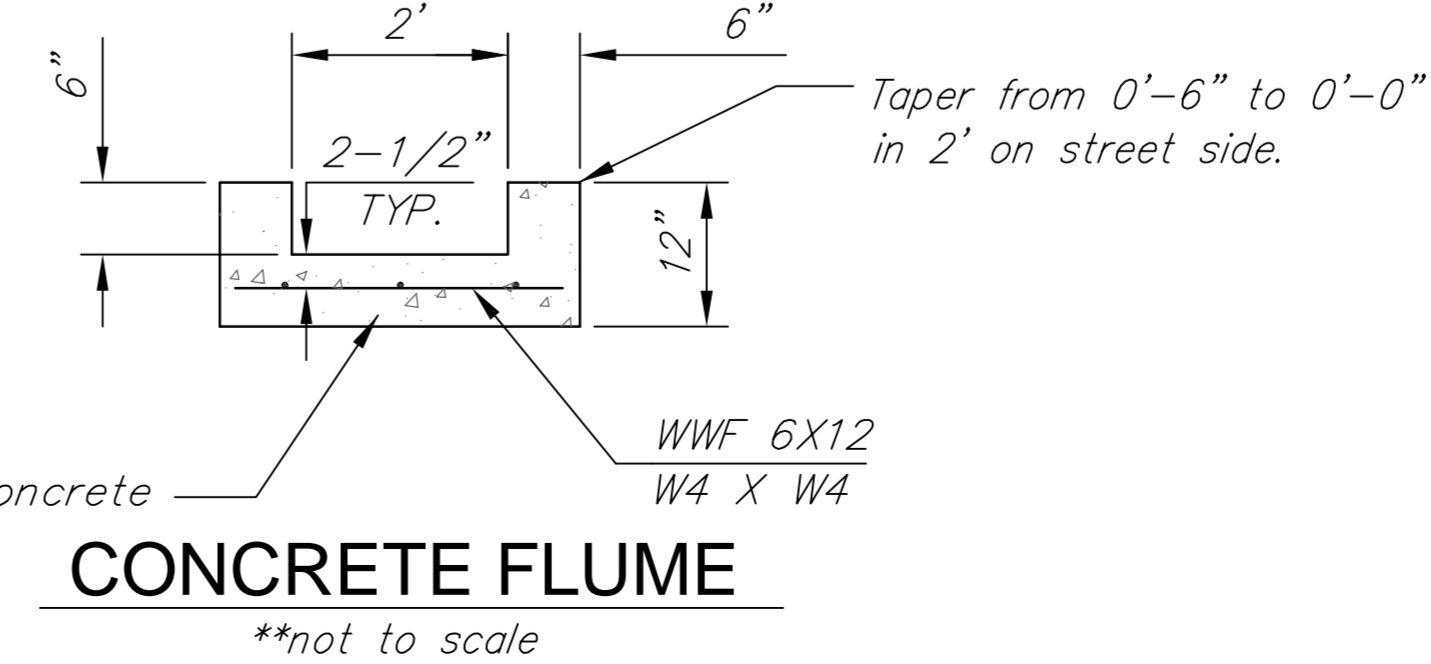
CONSTRUCT 5" A.C. TEMPORARY
HOOKUP (5" REINFORCED CRUSHED
ROCK BASE) AS INDICATED.

STA. 10+16.75
BEGIN CONSTRUCTION OF ASPHALT
PAVEMENT. SAWCUT 59 L.F. OF
EXISTING PAVEMENT TO NEAT LINE.

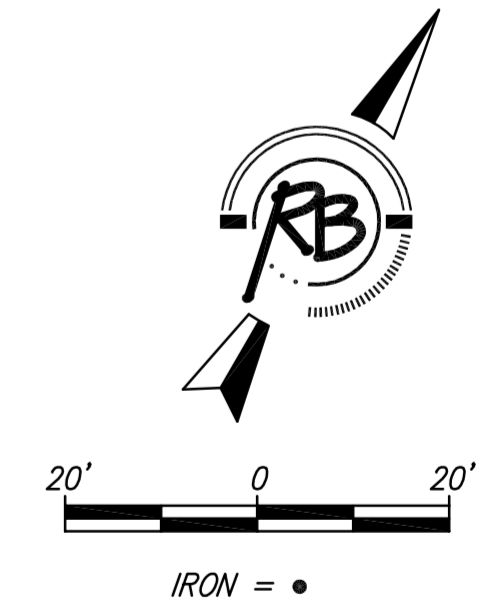
STA. 10+31.77
INSTALL 2-24" RCP 54 LF EACH
(LENGTH INCLUDES END SECTIONS)
FL OUT = 1395.90 (W)
FL IN = 1396.10 (E)
REGRADE 25 LF. DITCH TO THE EAST
AND INSTALL 11 S.Y. LIGHT STONE
RIP-RAP AS INDICATED.

STA 10+47, 20.00' RT
INSTALL SNS
"45th Street North" (8500 E)
"Ironwood Cir" (4600 N)

INSTALL 19 LF CONCRETE FLUME.
SEE DETAIL THIS SHEET.



NOTE: ROLL TYPE CURB AND
GUTTER TO BE CONSTRUCTED ALONG
PAVEMENT DEPICTED ON THIS SHEET



The Pines at Sawmill Creek
N. Ironwood Circle
WICHITA, KANSAS

Ruggles & Bohm, P.A.
Engineering, Surveying, Land Planning

924 North Main
Wichita, Kansas 67203
www.rbkansas.com

(316) 264-8008
(316) 264-4621 fax
E-mail: info@rbkansas.com

DESIGN: KWL
DRAWN: MLP
REVIEW: []
UTILITY: []
DATE: Jan. 22, 2008

DRAWING FILE: paving {Sawdust}
PROJECT NUMBER: 472-84630

RIB JOB: 3134E
SHEET: 3 OF 15