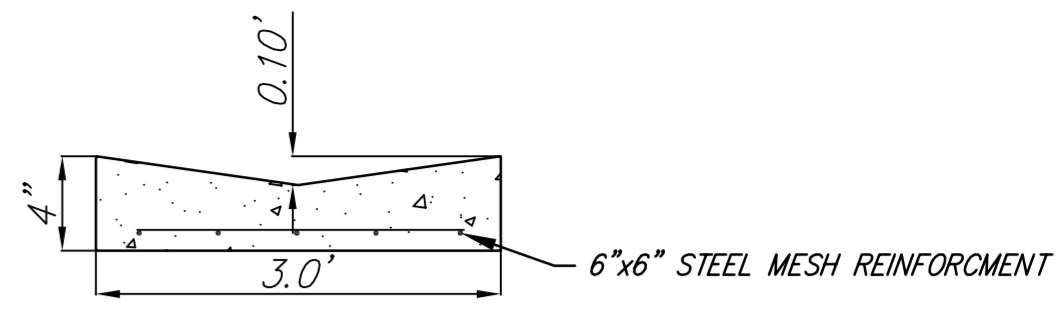


Typical Lot Grading Section

STA. 6+03.00
END 3' CONCRETE FLUME AT 0.35% AS INDICATED. SEE DETAIL THIS SHEET.
N = 19529.57, E = 21473.93

NOTE: MAINTAIN POSITIVE DRAINAGE ACROSS NORTHEAST CORNER OF LOT.

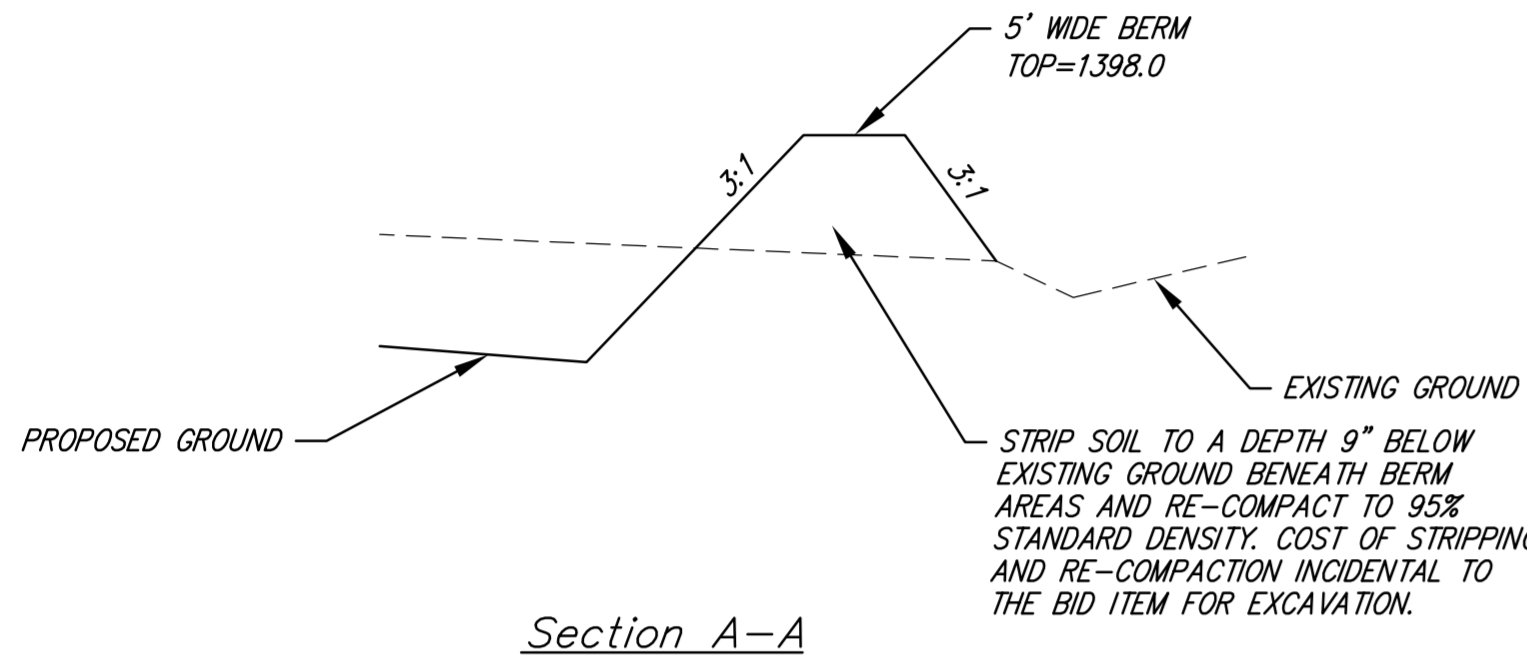


Concrete Flume
Note: Construction Joints spaced @ 50'
(construction joints may be sawn joints)
Expansion Joints Spaced at 150'

NOTE: SONOTUBE FOOTINGS FOR THE FUTURE CONCRETE WALL WILL BE INSTALLED PRIOR TO FLUME. FIELD ADJUST FLUME AS NECESSARY.

CONSTRUCT 603 L.F. 3' CONCRETE FLUME AT 0.35% AS INDICATED. SEE DETAIL, THIS SHEET.

STA. 1+88.00 P.I.
3' CONCRETE FLUME AT 0.35% AS INDICATED. SEE DETAIL THIS SHEET.
N = 19314.46, E = 21118.60



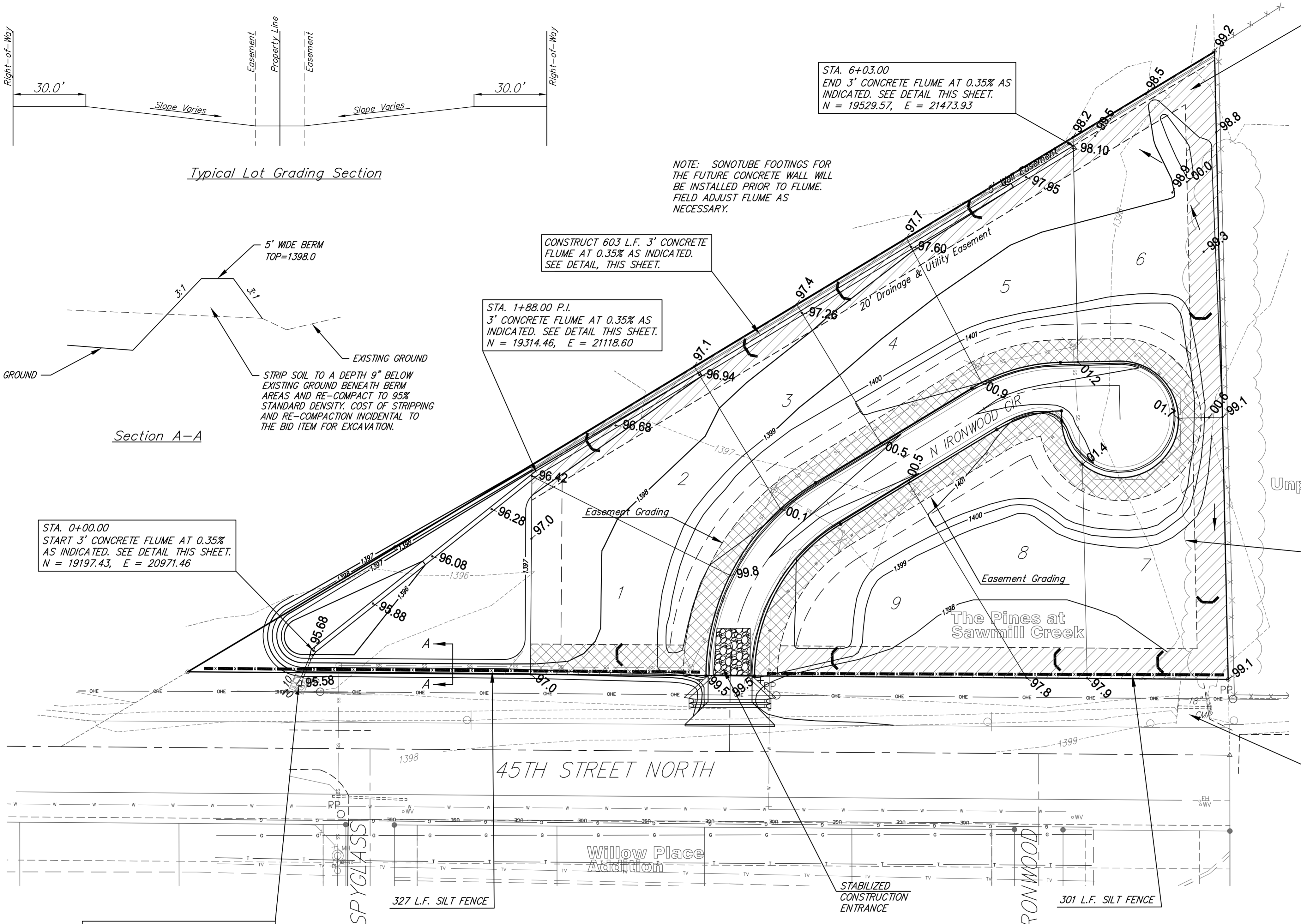
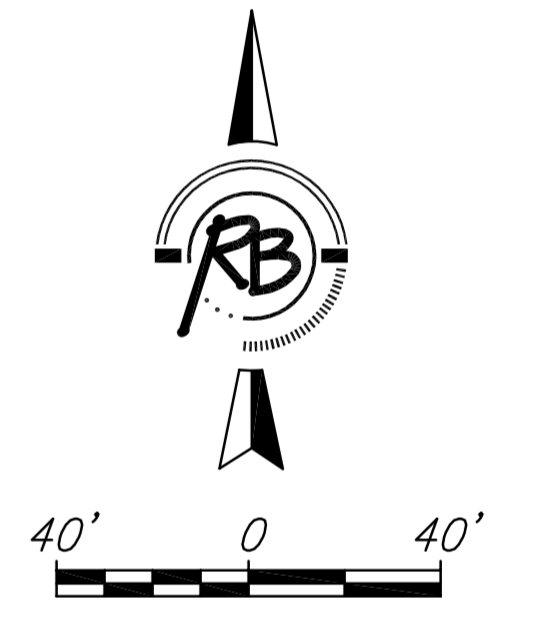
Section A-A

EARTHWORK CALCULATIONS
EXCAVATION 3 CY
COMPACTED FILL 8173 CY

STA. 0+00.00
START 3' CONCRETE FLUME AT 0.35% AS INDICATED. SEE DETAIL THIS SHEET.
N = 19197.43, E = 20971.46

TRIM AND REMOVE TREES AS NECESSARY TO 10' INSIDE OF THE 20' DRAINAGE & UTILITY EASEMENT. SUBSIDIARY TO BID ITEM FOR "SITE CLEARING AND RESTORATION".

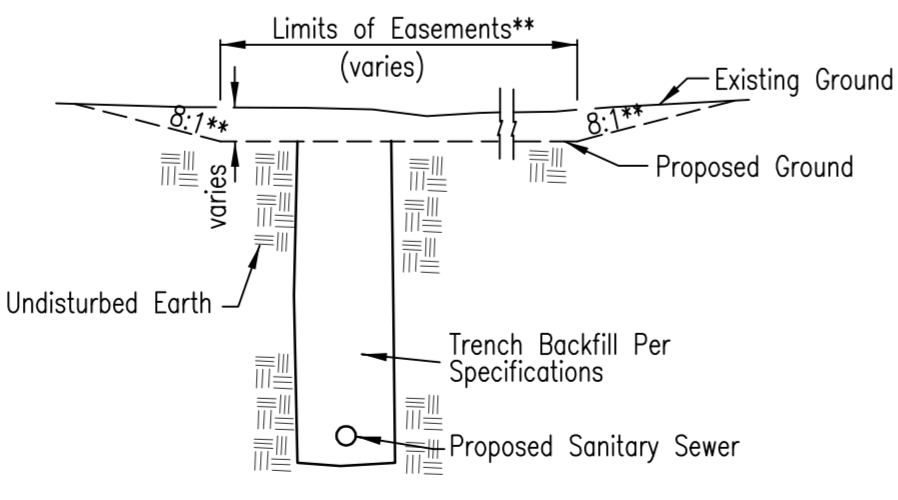
REMOVE FIELD ENTRANCE AND 18" CMP. INCIDENTAL TO BID ITEM "SITE CLEARING AND RESTORATION".



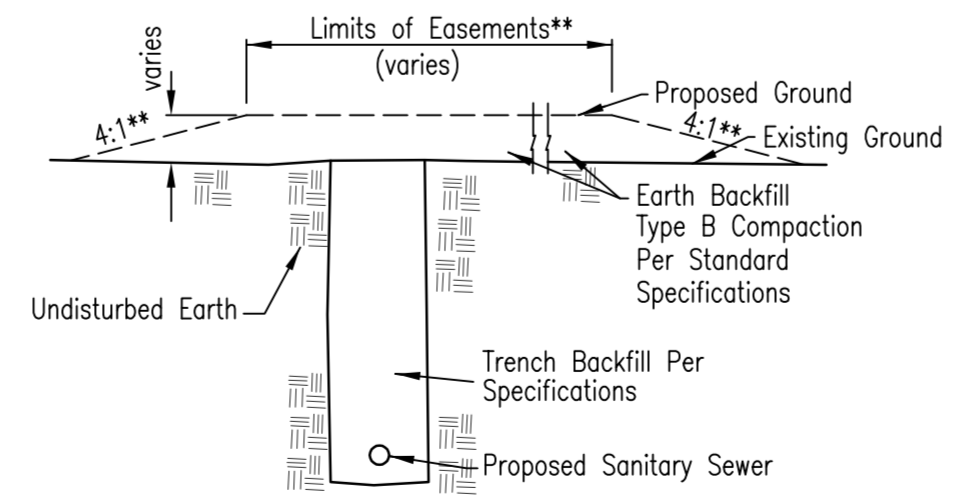
- LEGEND
- DITCH CHECK
 - CURB INLET PROTECTION
 - STRAW BALE BARRIER
 - SILT FENCE
 - CONSTRUCTION LIMITS
 - TEMPORARY DRAINAGE DITCH

NOTE: ALL DISTURBED AREAS TO SEEDED AND MULCHED PER CITY OF WICHITA SPECIFICATIONS.

STA. 0+31.77
INSTALL 25 LF 18" RCP W/18" END SECTION AT EACH END
FL IN = 1395.68 (NE)
FL OUT = 1395.58 (SW)
REGRADE 15 L.F. DITCH TO MATCH DITCH. INSTALL 11 S.Y. LIGHT STONE RIP-RAP AS INDICATED.



TYPICAL SECTION
"CUT" SITUATIONS



TYPICAL SECTION
"FILL" SITUATIONS

**Graded widths and slopes may vary as approved by the Engineer to minimize conflict with existing trees.

EASEMENT GRADING DETAILS

NOTE: CONTRACTOR TO MAINTAIN EROSION CONTROL MEASURES ALREADY IN PLACE. SUBSIDIARY TO "EROSION CONTROL BMP".

THE PINES AT SAWMILL CREEK
Erosion Control Plan/ Easement Grading
WICHITA, KANSAS

Ruggles & Bohm, P.A.
Engineering, Surveying, Land Planning

924 North Main
Wichita, Kansas 67203
www.rbkansas.com

(316) 264-8008
(316) 264-4621 fax
E-mail: info@rbkansas.com

DESIGN	KWL	RB JOB	3134E
DRAWN	MLP	SHEET	4
REVIEW		OF	15
UTILITY		DATE	Jan. 22, 2008
DRAWING FILE	PROJECT NUMBER		
PAVING (EROSION CONTROL PLAN)	472-84630		