

GENERAL NOTES

- Contractor will be required to provide notice to utility companies a minimum of twenty-four (24) hours prior to any excavation, as follows:

Kansas One-Call	687-2470
-----------------	----------

The Contractor must notify the following in case of an emergency:

Westar Energy	383-8650
	383-8600
Aquila Natural Gas	
Southwestern Bell Telephone Company	1-571-2611
City of Wichita Water Department	268-4908
City of Wichita Sewer Department	268-4024
Kansas Gas Service	832-3168
or	832-3167
Aquila Networks	942-8811
or	1-800-303-0357
- Exist. utilities and their locations, as shown on the plans, represent the best information obtainable for design. Location information has been obtained from the various utility companies and is either from company record drawings or company-provided field locations. The Contractor will be required to work around existing utilities which do not conflict with proposed construction.
- The Contractor to verify utility locations prior to construction of this project.
- Utility service and installation shall be coordinated with the respective utility owners. Contacts are:

Kansas Gas Service	Jim Coe	832-3121
Westar Energy	Miles Capps	261-6251
Aquila Networks	John Stark	942-8811
Wichita Water	Paul Bryant	268-4555

Southwestern Bell	Jim Tobin	268-2759
Cox Communications	Mark Anaya	262-4270
- All lawn/turf areas disturbed by construction of proposed improvements shall be restored with sod. All sodding work shall be in accordance with the City of Wichita standard specifications and the City of Wichita administrative regulation No. AR78 which governs cleanup and replacement following construction. All costs for this work shall be subsidiary to the lump sum price bid for "Site Restoration."
- Traffic affected by the construction of this project shall be handled in accordance with the latest edition of the Manual on Uniform Traffic Control Devices.
- All commercial signs to be moved by others prior to construction.
- Properties within the project may have underground irrigation systems (lawn sprinklers) which conflict with the new construction. Contractor shall remove such components as needed during construction of the project. The irrigation system shall be reinstalled in like kind before project completion. Any irrigation system modifications required because of project improvements shall be coordinated with the property owner. Portions of underground irrigation systems not in conflict with construction shall be protected from damage and shall remain in place. All work related to underground irrigation/sprinklers shall be subsidiary to Site Restoration.
- Cuts made to paved surfaces on public property will be repaired by the City's contractor and charged against the owner / applicant. Unit repair Prices are available from the City at 268-4418. A surcharge may be applicable: Call 268-4418 for details. Repair costs to be paid prior to release of water Service if water service is affected.
- The contractor shall be responsible for preserving property irons. The contractor will be required to re-establish any property irons which are damaged or destroyed by his construction operations. Such irons shall be re-established by a licensed land surveyor in accordance with state laws.
- The maintenance and repair of the water facilities on site are the responsibility of the property owner after the two year maintenance period by the contractor.
- Construction shall be in accordance with the City of Wichita standard construction practices.

FIRE LINE IMPROVEMENT TO SERVE

Metal - Fab, Inc.

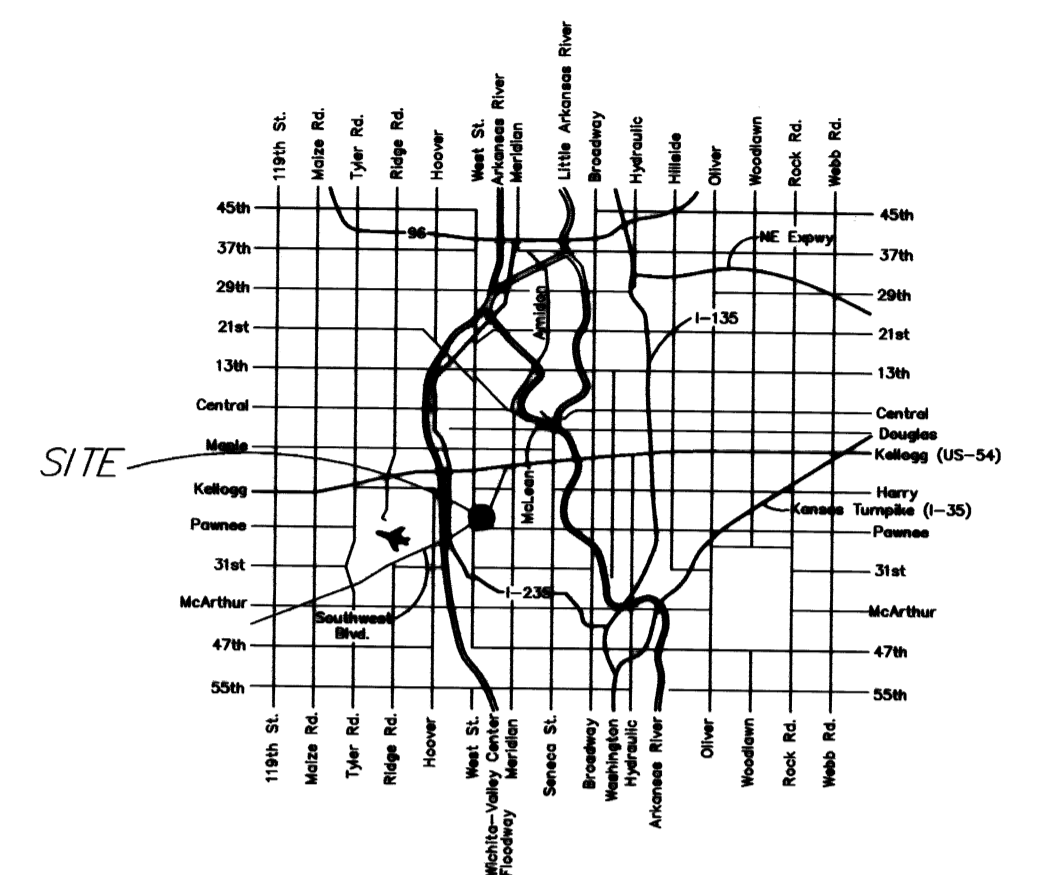
3025 May Ave

1341 PPW (607853)

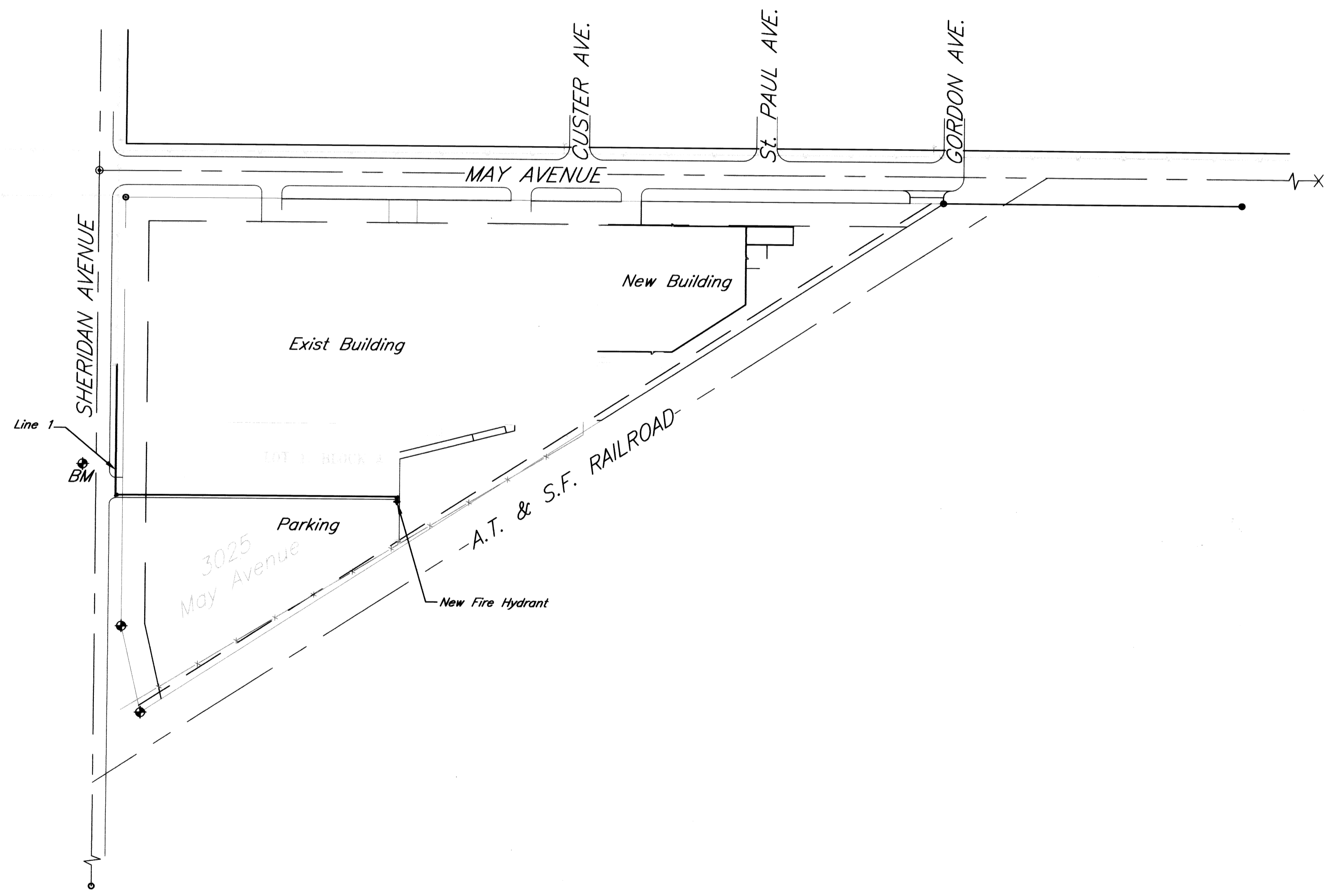
CITY OF WICHITA, KANSAS

INDEX OF SHEETS

1	Cover Sheet
2	Plan and Profile
3	Plan and Profile
4	FH Details



LOCATION MAP



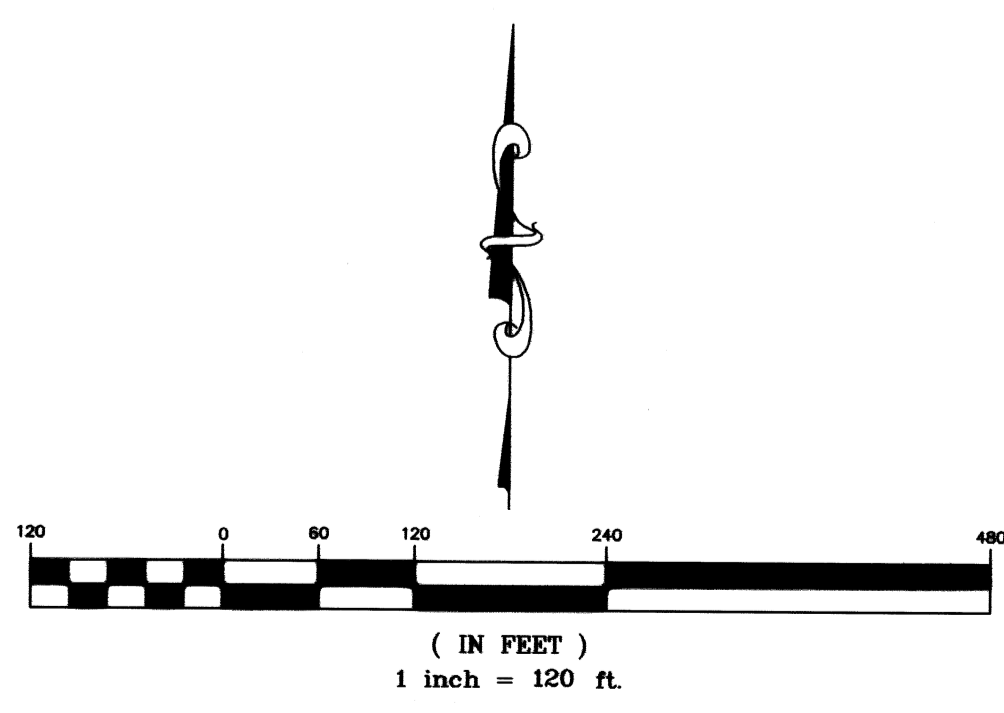
Base Line:
 Sta. 10+00 at Intersection of Center Lines on Sheridan Ave. and May Ave. Following Sheridan Ave. Center Line Southward.

Bench Mark:
 West Curb of Sheridan Ave. 438'
 South of Intersection With May Ave.
 Elev: 1294.90

APPROVED AS NOTED
 BY CITY ENGINEER OF WICHITA,
 & BY WICHITA WATER & SEWER DEPARTMENT,
 & BY WICHITA FIRE DEPARTMENT

Public Works: *SMK* 8/7/07
 Water & Sewer: *SMK* 8/3/07
 WFD/RLI 8-4-07

NOTE TO CONTRACTORS
 Public Property:
 Inspection and testing for the waterline is to be provided by a Licensed Consulting Engineering Firm under contract with the Owner/Developer. Said inspection to be in accordance with the City of Wichita standard construction engineering practices and certified by a Professional Engineer Licensed in the state of Kansas. No work shall be performed in dedicated easements or public right-of-way by the Contractor without such inspection nor shall any work be commenced without written authorization by the City Engineer. All Construction and Materials shall comply with the City of Wichita Specifications and Standards (on file and available in the City Engineer's Office).



As Built Plans:
 CONTRACTOR: Midwest Fire Protection
 INSPECTOR: Tom Jones, K E Miller Engineering
 .PDF by: NWS, 03-04-08

July 2007

kemiller
 engineering

516 S. Market,
 Wichita, KS 67202

316/264-0242