

Street Paving for Manlo / 34th Street North

to serve

MESA VERDE ADDITION - PHASE I

Manlo: From the West Line of the Plat to the East Line Of Lot 1, Block D
 34th St. North: From the West Line of the Plat, East to the East Line of Lot 6, Block D
 Sedgwick: From the South Line of Manlo, South to the North Line of 34th St. North

CITY OF WICHITA, KANSAS

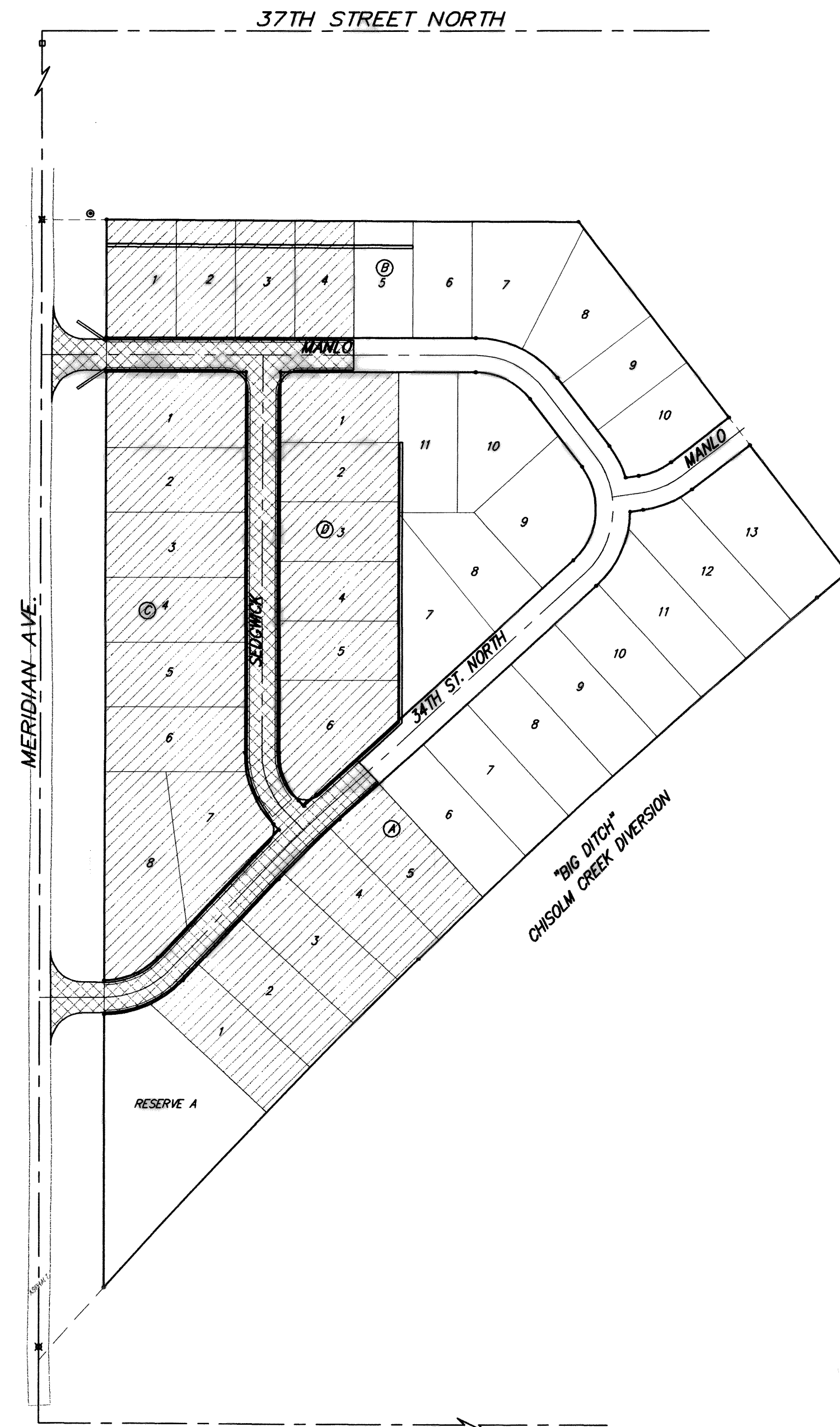
James L. Armour, P.E. City Engineer

Project Number

472-84481

O.C.A. Number

766175



GENERAL NOTES:

- Contractor will be required to provide notice to utility companies a minimum of forty-eight (48) hours prior to any excavation, as follows:
 Kansas One-Call 687-2470
 The Contractor must notify the following in case of an emergency:
 Cox Communications 262-4270
 Kansas Gas Service 1-888-482-4950
 Westar Energy 383-8850
 Aquila Energy 1-800-303-0357
 SBC 268-2245
 City of Wichita Water Dept. 268-4563
 City of Wichita Sewer Maint. 268-4024
 City of Wichita Storm Sewer Maint. 268-4090
 City of Wichita Traffic Maint. 268-4034
 Conoco Phillips Pipeline Co. 1-877-267-2290
 Southern Star Pipeline Co. 529-6600
 Kinder-Morgan Pipeline Co. 1-888-844-5658
- Utility service lines, poles, valve boxes, meters, and etcetera are to be adjusted as necessary by others prior to construction unless the plans specifically call for their adjustment by the Contractor or unless the plans specifically identify a utility to be adjusted by its owner during construction. Existing utilities and their location, as shown on the plans, represent the best information obtainable for design. The Contractor will be required to work around existing utilities within the right-of-way which do not conflict with proposed construction.
- Rubble from the removal of miscellaneous structures and excess excavation which is to be wasted shall be disposed of on sites to be provided by the Contractor. These sites shall be approved by the Engineer as to suitability, appearance and site location. Locations, in the opinion of the Engineer, that will leave an unsightly appearance will not be approved. All disposal sites must be approved by the Kansas Department of Health and Environment. Material either stockpiled or disposed of in a flood plain would require a Kansas State Board of Agriculture permit. Any material dumped in waters of the United States or wetlands is subject to U.S. Corps of Engineers permitting regulations. Any material buried or stockpiled beyond approved construction limits would require additional archaeological investigations unless buried in a previously approved borrow location.
- Trees and shrubs in public right-of-way which are in direct conflict with proposed new construction shall be removed by the Contractor with the Engineer's approval. Trees and shrubs which are not in direct conflict with proposed new construction shall be saved and protected from damage.
- The Contractor shall give all property owners and/or tenants of developed property abutting the construction of this project a minimum of ten (10) days notice prior to start of construction.
- The Contractor shall be responsible for preserving property irons. The Contractor will be required to re-establish any property irons which are damaged or destroyed by his construction operations. Such irons shall be re-established by a licensed land surveyor in accordance with state laws.
- Excess excavation shall remain on site and be stockpiled at a location within Mesa Verde Addition to be determined by Baughman Co., P.A.
- All existing and proposed erosion control measures including silt fencing, erosion control mat, straw bales, inlet barriers, and cost entrance shall be maintained throughout construction by the contractor and until project is accepted by the City of Wichita. The on-site engineer shall complete weekly reports on the status of erosion control measures. The contractor shall be required to comply with maintenance and/or replacement of erosion control measures as determined by the on-site engineer until project is accepted by City of Wichita.
 Seed: Kansas Premium Fescue Blend: 8 lbs./1000 sq. ft.
 Mulch: Prairie Hay: 2 tons/acre
 Fertilizer: 12-24-12: 850 lbs./acre
 All costs associated with seeding, mulching, and fertilizing shall be included in bid item "Project Seeding." All seeding operations shall conform to City of Wichita Standard Specifications.
 All other areas disturbed during construction shall be seeded at 300 lbs./acre with Rye Grass immediately following construction in that area. Contractor shall prepare ground per City Specifications.
- All areas within R/W of Meridian Ave. disturbed during construction shall be seeded, mulched, and fertilized as follows (Permanent Seeding):
 Seed: Kansas Premium Fescue Blend: 8 lbs./1000 sq. ft.
 Mulch: Prairie Hay: 2 tons/acre
 Fertilizer: 12-24-12: 850 lbs./acre
 All costs associated with seeding, mulching, and fertilizing shall be included in bid item "Project Seeding." All seeding operations shall conform to City of Wichita Standard Specifications.
 All other areas disturbed during construction shall be seeded at 300 lbs./acre with Rye Grass immediately following construction in that area. Contractor shall prepare ground per City Specifications.
- A saw cut of at least one-half the depth of existing surface courses or one-fourth the depth of the existing total pavement thickness shall be provided at locations where proposed construction abuts the existing surface course or pavement for which partial removal of that surface or pavement is required. Sawed joint to facilitate removal within three (3) feet of existing joints will not be permitted and for such instances the limits of removal shall extend to the existing joint. Such saw cuts will not be paid for directly and this cost shall be considered as subsidiary to the removal of the surface or pavement.
- The contractor shall adjust valve boxes as necessary to match proposed grade. Cost to be included in bid item, "Site Clearing & Restoration."
- Earthwork Cross Sections and Earthwork Quantities reflect topography as of 10/04. The Contractor shall satisfy himself with the Earthwork Quantities as bid for Excavation, Compacted Fill, and Mass Grading prior to bidding. No additional payments or change orders for earthwork will be accepted.
- The Developer of this project is Richard E. Lopez and may be reached at (316) 264-5372

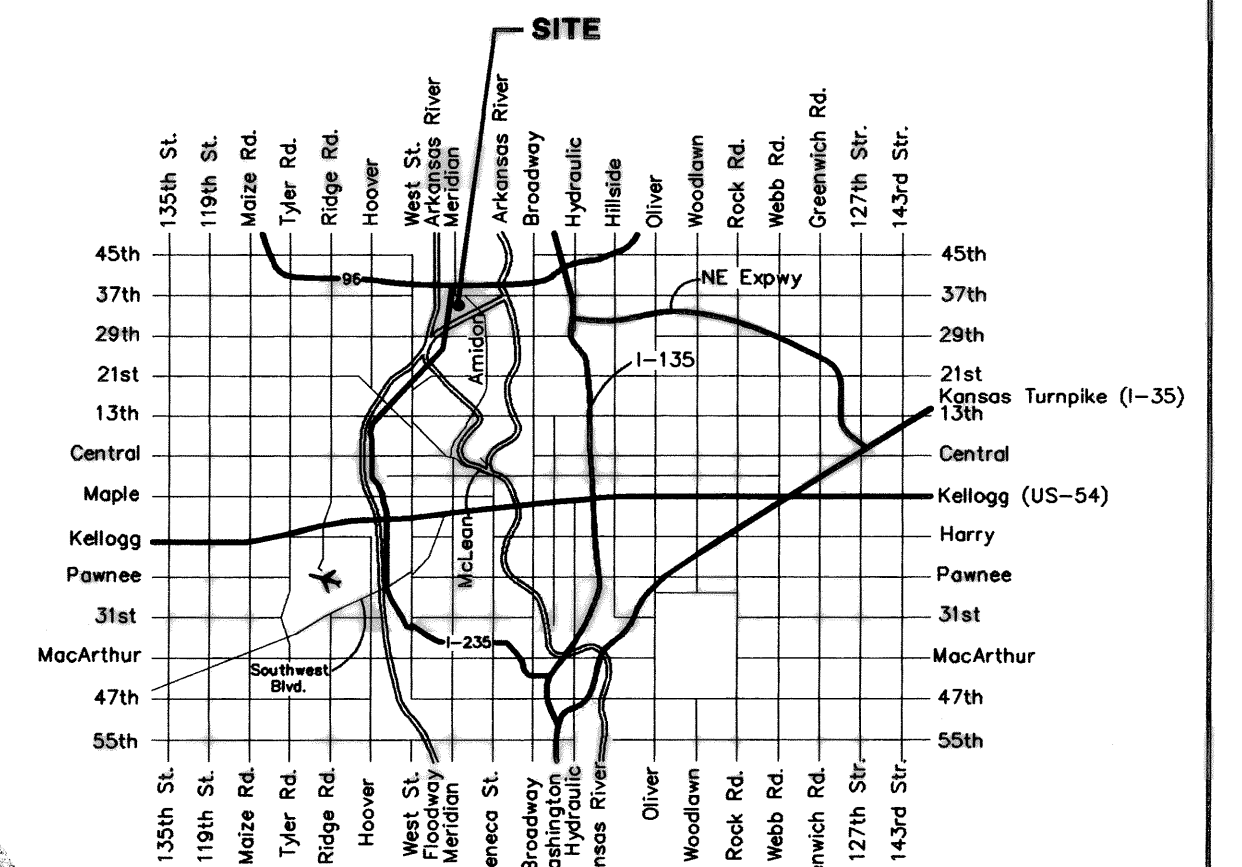
Sheet Index

Title Sheet	1
29' Pavement Detail	2
Sign Detail	3
Miscellaneous Pavement Detail	4
Manlo	5
34th Street North	6
Sedgwick	7
Mass Grading Plan	8
Erosion Control Plan	9
Erosion Control BMP Details	10-13
Earthwork Cross Sections	14-16
Coordinate Sheet	17
Copy of Plat	18

Benchmarks

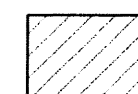
- BM # 1 City of Wichita Disc in the Northwest Corner of 37th Street North and Wornor Elev. = 1324.06 MSL
- BM # 2 "C" Cut on the Top of Curb in the NE Corner of the Parking Lot for The Word of Life Church at 37th Street North & Meridian. Elev. = 1323.11 MSL
- BM # 3 RR Spike in the East Face of Light Pole at the Southwest Corner of 34th Street North & Meridian. Elev. = 1320.32 MSL

EARTH WORK TOTALS	(UNADJUSTED)		SEE GENERAL NOTE 7
	Excavation	Compacted Fill	
Mass Grading	1,612	-	2,295
Street R/W's & Str Esmt's	2,034	105	419
Total	3,646	105	2,714
TOTAL PROJECT LENGTH			
1,202 L.F. = 0.23 Miles			



Vicinity Map

Benefit District



Proposed Streets



Baughman Company, P.A. 315 Ella St. Wichita, KS 67211 P 316-262-7271 F 316-262-0145
 ENGINEERING | SURVEYING | PLANNING | LANDSCAPE ARCHITECTURE