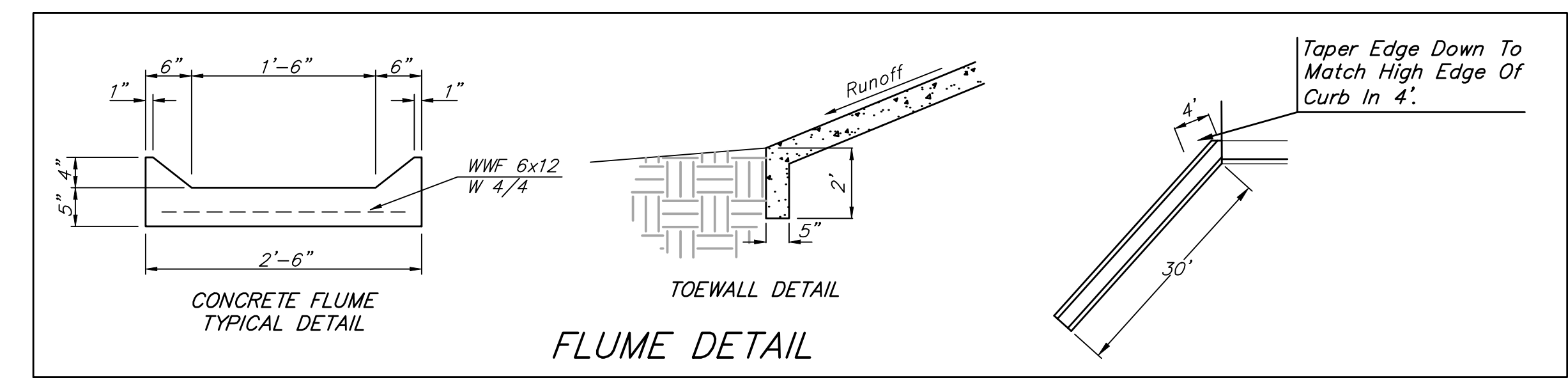
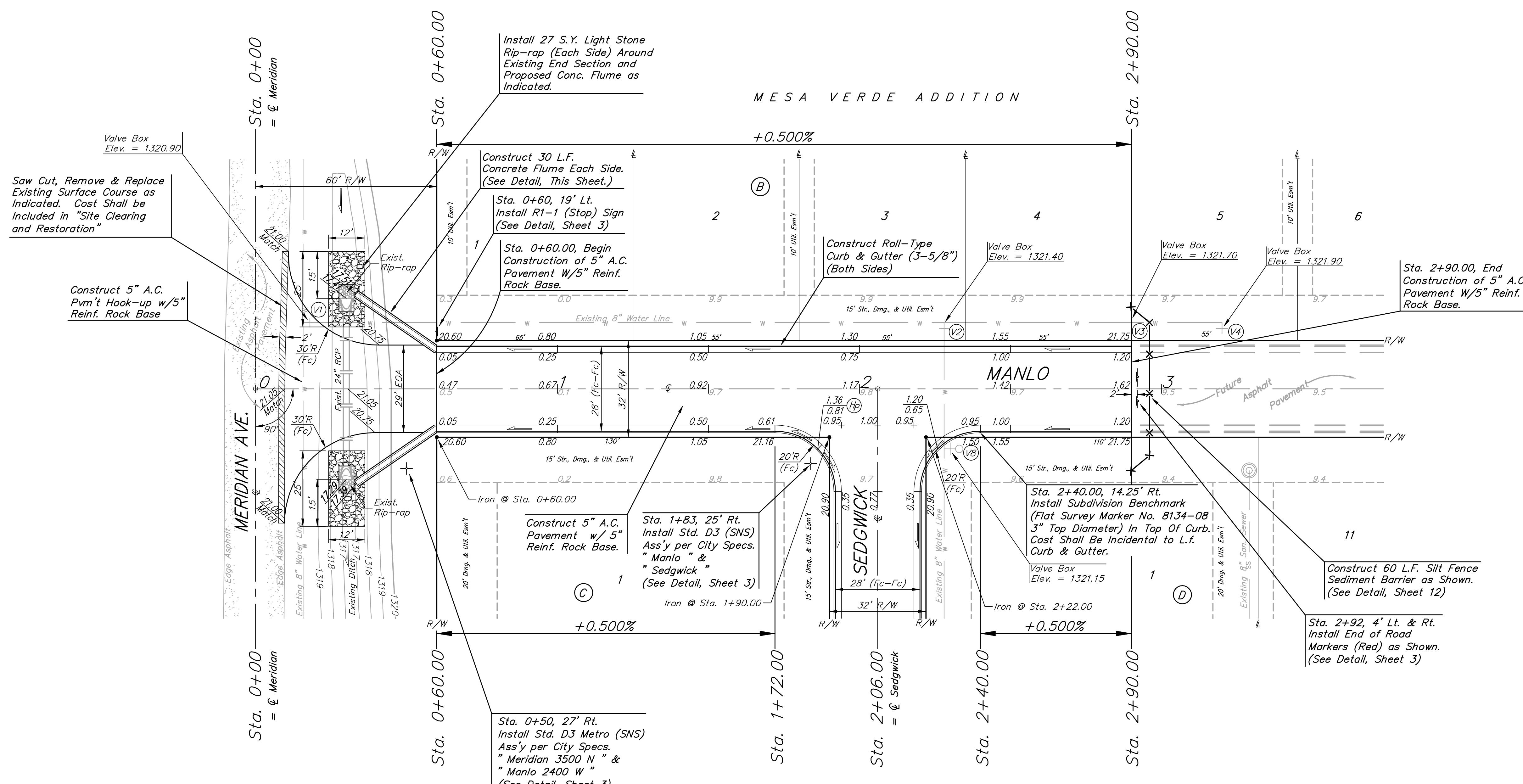


BENCHMARK:
 BM # 1 - City of Wichita Disc in the Northwest Corner of 37th Street North and Womer Elev. = 1324.06 MSL
 BM # 2 - "C" Cut on the Top of Curb in the NE Corner of the Parking Lot for The Word of Life Church at 37th Street North & Meridian. Elev. = 1323.11 MSL
 BM # 3 - RR Spike in the East Face of Light Pole at the Southwest Corner of 34th Street North & Meridian. Elev. = 1320.32 MSL

Scale: 1" = 20'
 • = Iron



		Mesa Verde Addition - Phase I	
		MANLO STA. 0+00 TO STA. 2+90.00	
<small>Baughman Company, P.A. 315 Ellis St. Wichita, KS 67211 F 316262-7271 F 316262-0149 ENGINEERING SURVEYING PLANNING LANDSCAPE ARCHITECTURE</small>			
PROJECT NUMBER 472-84481	DESIGN JAK	DRAWN JAK	DATE 2/20/08
REVISIONS:	APPROVED	SCALE Noted	SHEET
			5 OF 18
Mesa Verde\Phase1\St1			07-11-E995