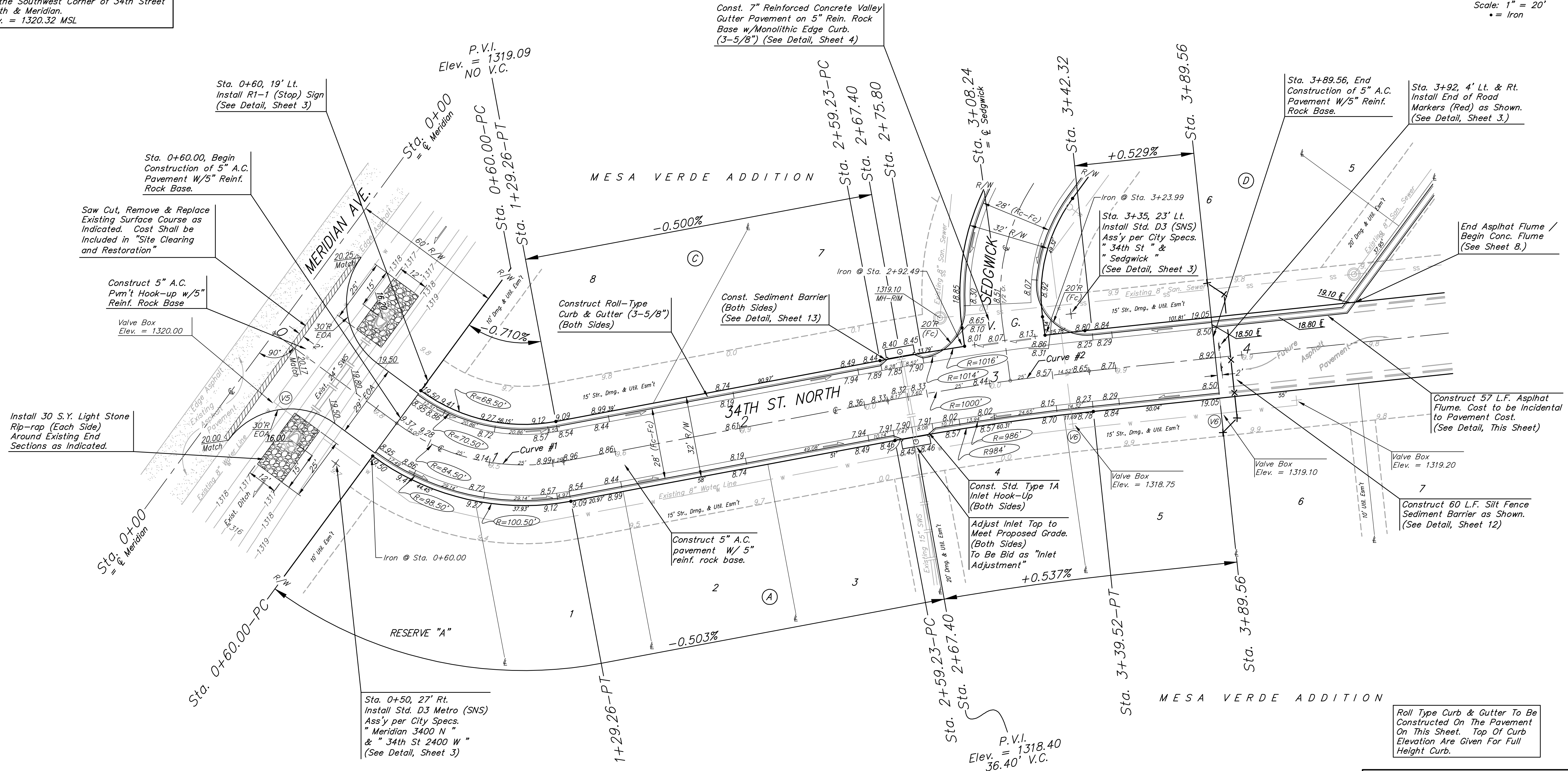
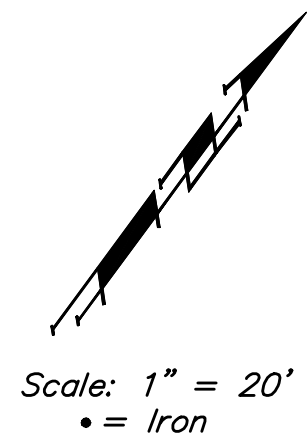


BENCHMARK:
 BM # 1 - City of Wichita Disc in the Northwest Corner of 37th Street North and Womer Elev. = 1324.06 MSL
 BM # 2 - "C" Cut on the Top of Curb in the NE Corner of the Parking Lot for The Word of Life Church at 37th Street North & Meridian. Elev. = 1323.11 MSL
 BM # 3 - RR Spike in the East Face of Light Pole at the Southwest Corner of 34th Street North & Meridian. Elev. = 1320.32 MSL

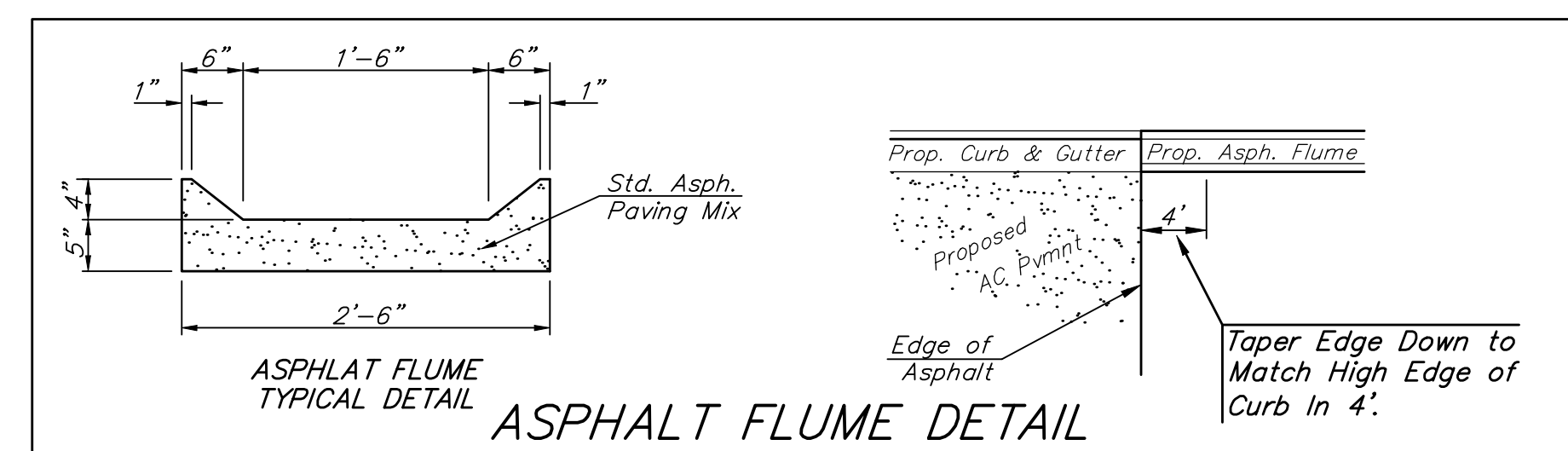


Curve #1
Curve Data Based on Centerline
Rad. = 84.50' Delta = 46° 57' 46" Tangent = 36.71'
Arc = 69.26' L.C. = 67.34' Del/Ft. = 20.34195 Min.

Station	Arc	FACE CHORD LENGTHS	Defl.	T. Defl.
		8' Lt.	8' Rt.	
0+60.00	-	0'00"00"	0'00"00"	0'00"00"
0+75.00	15.00'	11.08'	18.88'	5'05"08"
1+00.00	25.00'	18.42'	31.39'	8'28"33"
1+25.00	25.00'	18.42'	31.39'	8'28"33"
1+50.00	4.26'	3.15'	5.37'	1'26"39"

Curve #2
Curve Data Based on Centerline
Rad. = 1000' Delta = 4° 36'00" Tangent = 40.16'
Arc = 80.29' L.C. = 80.26' Del/Ft. = 1.71877 Min.

Station	Arc	FACE CHORD LENGTHS	Defl.	T. Defl.
		8' Lt.	8' Rt.	
2+59.23	-	-	-	0'00"00"
2+75.00	15.77'	16.12'	15.42'	0'27"06"
2+90.77	0.80'	0.82'	0.78'	0'01"23"
3+00.00	24.20'	24.73'	23.67'	0'41"35"
3+25.00	25.00'	25.55'	24.45'	0'42"59"
3+50.00	14.52'	14.84'	14.20'	0'24"57"



B
Baughman

Mesa Verde Addition - Phase I
34TH STREET
STA. 0+00 TO STA. 3+89.56

Baughman Company, P.A. 315 Ellis St. Wichita, KS 67211 F 316-262-7771 F 316-262-0149
ENGINEERING | SURVEYING | PLANNING | LANDSCAPE ARCHITECTURE

PROJECT NUMBER 47284481	DESIGN JAK	DRAWN JAK
REVISIONS:	APPROVED	DATE 2/20/08
SCALE Noted		SHEET 6 OF 18

Mesa Verde\Phase1\Str2 07-11-E995