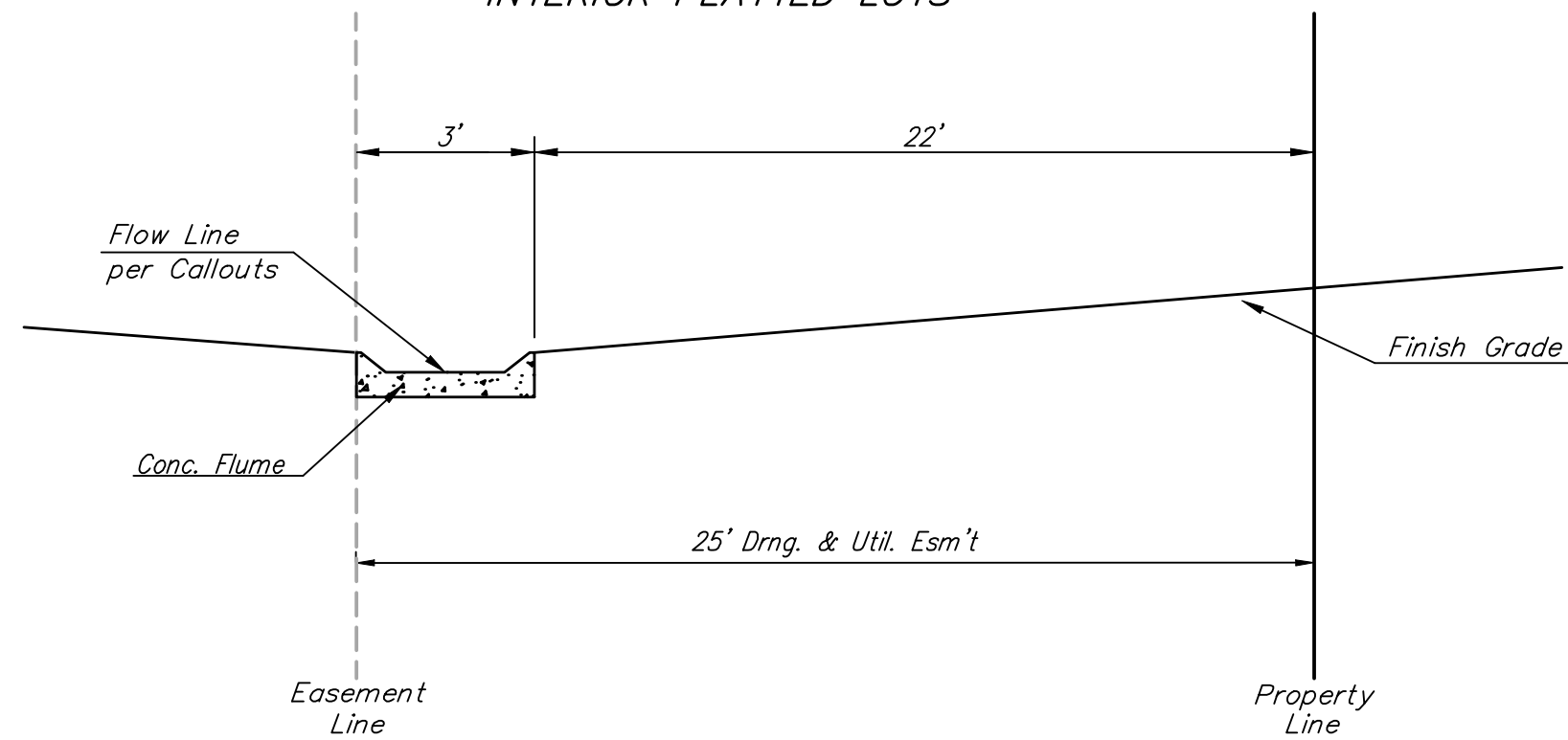
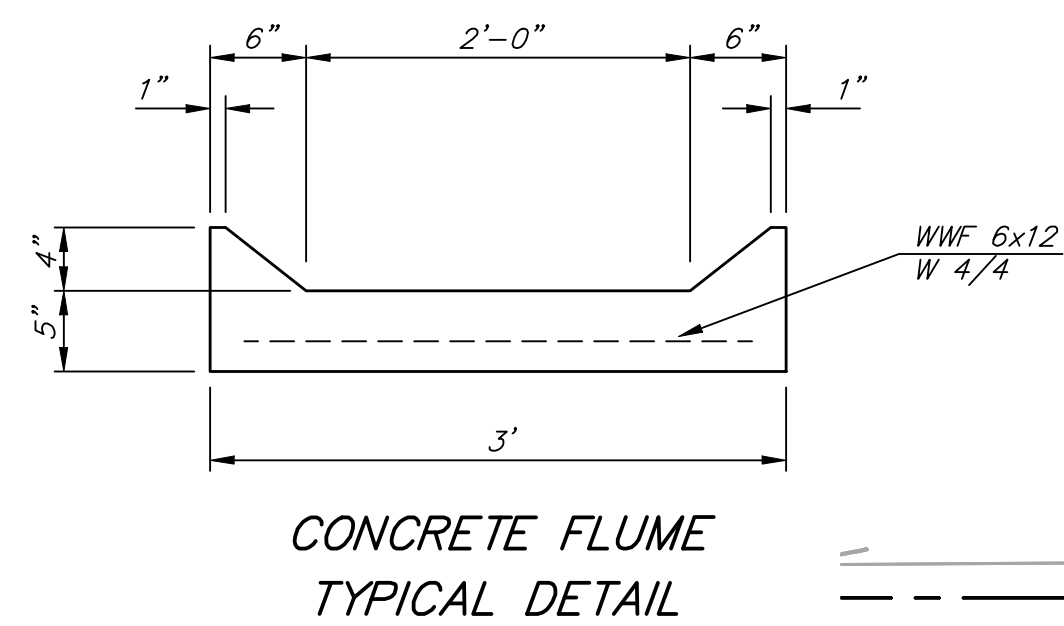


**SECTION A-A**  
INTERIOR PLATTED LOTS



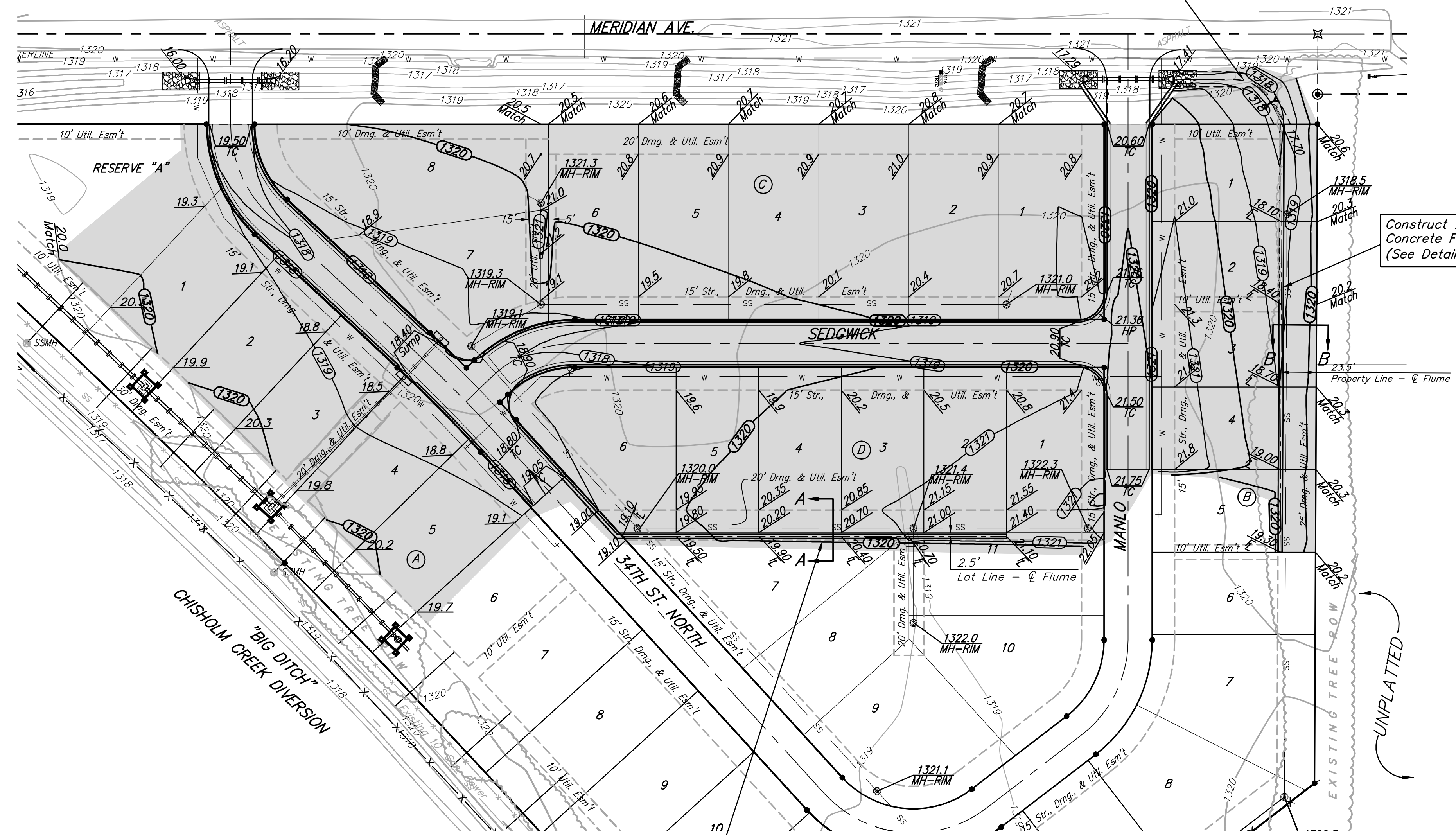
**SECTION B-B**  
EXTERIOR PLATTED LOTS  
ADJACENT TO UNPLATTED LAND



**CONCRETE FLUME**  
TYPICAL DETAIL

Grade to Drain to Existing RCP and Ensure Positive Drainage. This Work to be Incidental to "Mass Grading"

Scale: 1" = 50'



Construct 285.0 L.F. Concrete Flume. (See Detail, This Sheet.)

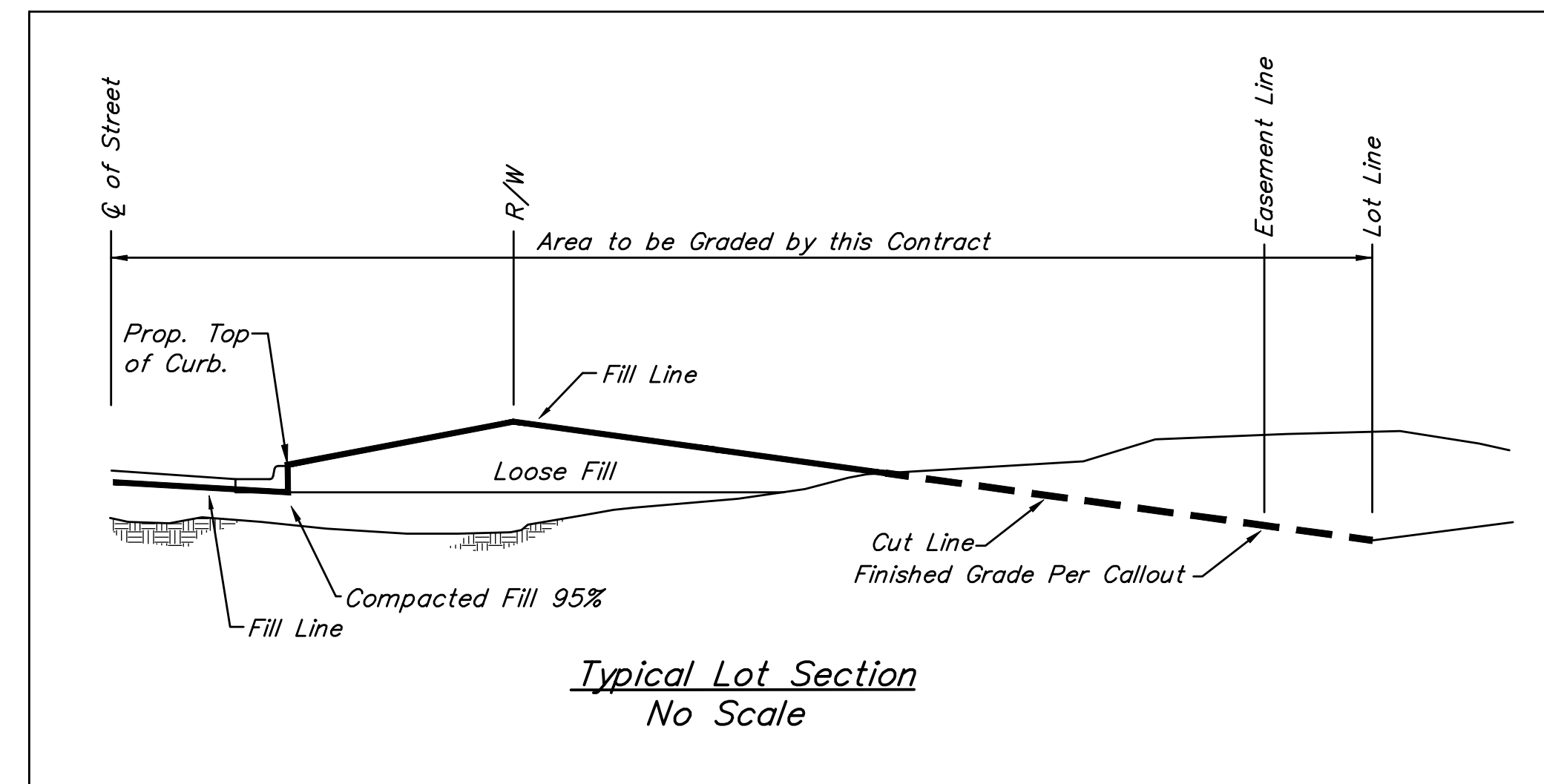
Construct 255.7 L.F. Concrete Flume. (See Detail, This Sheet.)

**NOTE:**  
When Trees Are Present Along Rear Lot Line, Grade Shall Match At Trunk Line And Trees Shall Not Be Disturbed. Any Trimming Of Trees Shall Be Approved By The Engineer And Owner.

<b>EARTH WORK TOTALS (UNADJUSTED)</b>			
	Excavation	Compacted Fill	Loose Fill
Mass Grading	1,597	-	2,268
Street R/W's & Str Esmt's	2,049	105	446
<b>Total</b>	<b>3,646</b>	<b>105</b>	<b>2,714</b>

Earthwork quantities are for reference only. All costs associated with earthwork fill, compaction, and mass grading shall be included in bid items "Excavation", "Compacted Fill", and "Mass Grading". No additional payments or change orders for earthwork will be accepted

- Contractor to strip top 3" of soil within street R/W before mass grading and stockpile.
- Compaction of 95% Standard Proctor Density shall be obtained in all street R/W's, 90% Standard Proctor Density in all other areas.
- It shall be the Contractor's responsibility to protect the sanitary sewer, water distribution system, & storm water sewer during mass grading. Any damage done to these systems by Contractor or subcontractor shall be repaired at no additional cost to the project.
- All areas disturbed during construction not under proposed pavement are to be seeded as follows:  
Seed: - Rye Grass (PLS) - 5#/1000 Sq. Ft. and Kansas Premium Fescue Blend - 5#/1000 Sq. Ft. Cost of seeding shall be incidental to "Project Seeding".



**Typical Lot Section**  
No Scale

	Mesa Verde Addition-Phase I	
	<b>Mass Grading Plan</b>	
Street Paving Improvements		
<small>Baughman Company, P.A. 315 Ellis St. Wichita, KS 67211 P 316-262-7271 F 316-262-0149 ENGINEERING   SURVEYING   PLANNING   LANDSCAPE ARCHITECTURE</small>		
PROJECT NUMBER 47284481	DESIGN NBW/JAK	DRAWN JAK
REVISIONS:	APPROVED	DATE 2/20/08
	SCALE Noted	SHEET
		<b>8 OF 18</b>