

# COUNTRY HOLLOW ADDITION


STORMWATER DRAIN #281

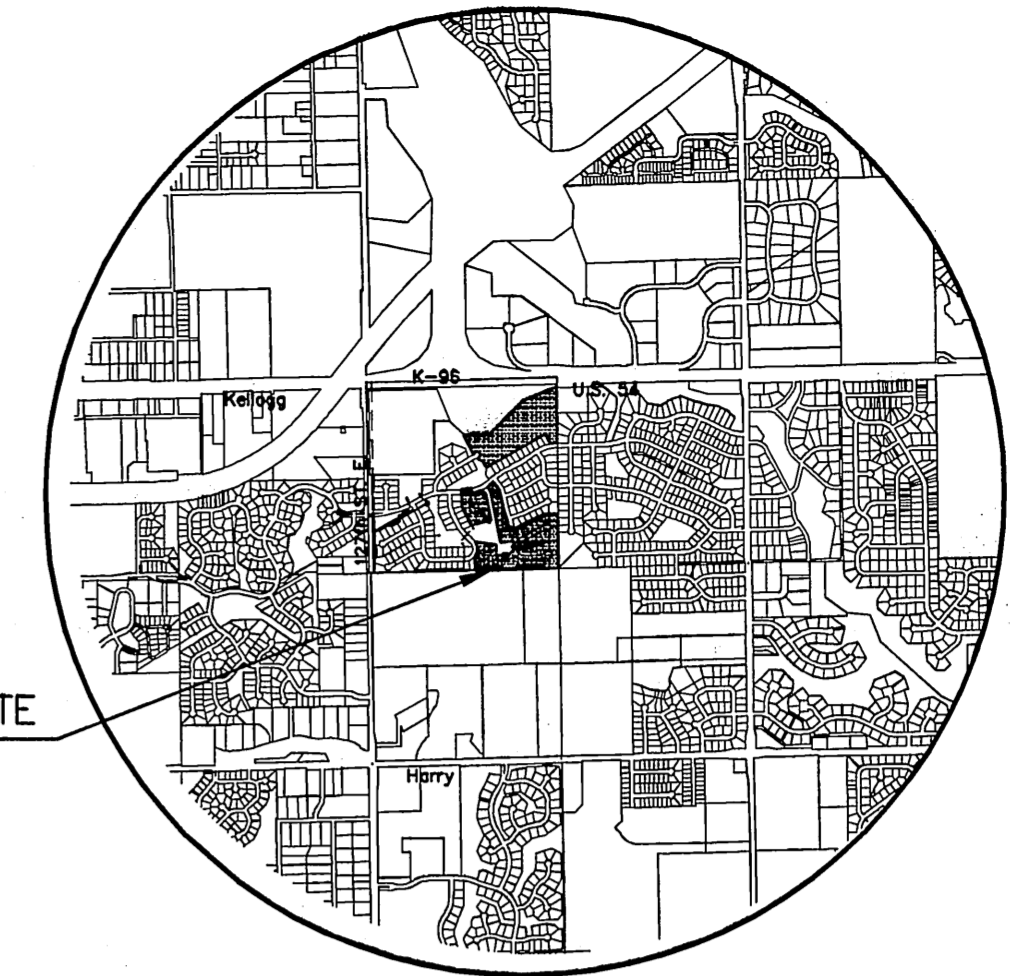
PROJECT NO. 468-84114

CITY OF WICHITA, KANSAS  
JAMES L. ARMOUR, CITY ENGINEER

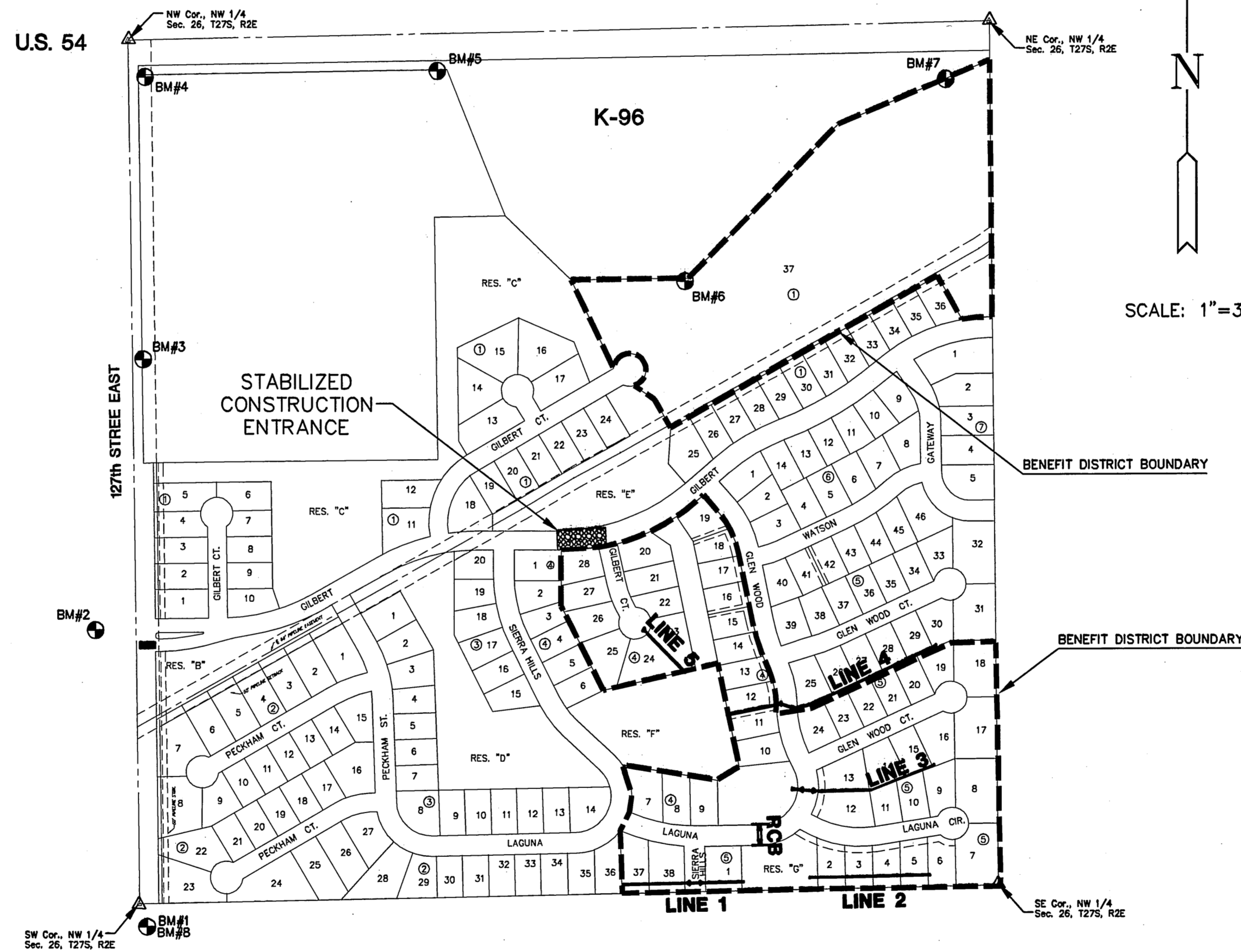
OCA - 751468

## GENERAL NOTES

- UNLESS SHOWN OR OTHERWISE STATED ON THESE DRAWINGS, MATERIALS AND CONSTRUCTION SHALL BE IN ACCORDANCE WITH THE CITY OF WICHITA STANDARD SPECIFICATIONS.
  - THE TOPS OF INLETS AND MANHOLES AS NOTED ON THE PLANS MAY VARY SO AS TO MEET PROPOSED TOP OF CURB ELEVATIONS OR PAVEMENT ELEVATIONS. THE FIELD ENGINEER SHALL LOCATE INLETS AND MANHOLES WITH REFERENCE TO PROPOSED PAVING PLANS OF THE PERTINENT STREETS.
  - ALL CONCRETE SHALL BE STANDARD PAVING MIX UNLESS OTHERWISE NOTED.
  - THE CONTRACTOR SHALL BE RESPONSIBLE FOR PRESERVING PROPERTY IRONS. THE CONTRACTOR SHALL BE REQUIRED TO RE-ESTABLISH ANY PROPERTY IRONS WHICH ARE DAMAGED OR DESTROYED BY HIS CONSTRUCTION OPERATIONS. SUCH IRONS SHALL BE RE-ESTABLISHED BY A LICENSED LAND SURVEYOR IN ACCORDANCE WITH STATE LAWS.
  - TREES TO BE REMOVED ARE MARKED . ALL TREES WHICH IN THE OPINION OF THE FIELD ENGINEER CAN BE SAVED, SHALL BE SAVED.
  - CONTRACTOR SHALL NOTIFY UTILITY COMPANIES OF CONSTRUCTION SCHEDULING.
  - EXISTING UTILITIES AND THEIR LOCATIONS, AS SHOWN ON THE PLANS REPRESENT THE BEST INFORMATION OBTAINABLE FOR DESIGN. LOCATION INFORMATION HAS BEEN OBTAINED FROM THE VARIOUS COMPANIES AND IS EITHER FROM COMPANY UTILITY DRAWINGS OR COMPANY PROVIDED FIELD LOCATIONS. THE PLAN LOCATIONS SHOWN ARE NOT GUARANTEED. ADDITIONAL EXISTING UTILITIES MAY ALSO BE ENCOUNTERED.
  - CONTRACTOR WILL BE REQUIRED TO PROVIDE A MINIMUM ADVANCE NOTICE OF SEVENTY-TWO (72) HOURS TO UTILITY COMPANIES TO STARTING ANY EXCAVATION AS FOLLOWS:  
  
KANSAS ONE-CALL 800-344-7233  
OR 687-2470 (LOCAL WICHITA)
- THE CONTRACTOR MUST NOTIFY THE FOLLOWING IN CASE OF EMERGENCY:
- |                               |              |
|-------------------------------|--------------|
| COX COMMUNICATIONS (CABLE)    | 262-0661     |
| WESTAR (ELECTRIC)             | 261-6512     |
| KANSAS GAS SERVICE (GAS)      | 832-3101     |
| SBC (TELEPHONE)               | 800-870-8390 |
| CITY OF WICHITA WATER & SEWER | 262-6000     |
| AQUILA (GAS)                  | 800-303-0357 |
- RUBBLE FROM THE REMOVAL OF MISCELLANEOUS STRUCTURES AND EXCESS EXCAVATION WHICH IS TO BE WASTED SHALL BE DISPOSED OF ON SITES TO BE PROVIDED BY THE CONTRACTOR. THESE SITES SHALL BE APPROVED BY THE ENGINEER AS TO SUITABILITY, APPEARANCE AND SITE LOCATION. LOCATIONS THAT, IN THE OPINION OF THE ENGINEER, WILL LEAVE AN UNSIGHTLY APPEARANCE WILL NOT BE APPROVED. ALL DISPOSAL SITES MUST BE APPROVED BY THE KANSAS DEPARTMENT OF HEALTH AND ENVIRONMENT. MATERIAL EITHER STOCKPILED OR DISPOSED OF IN A FLOOD PLAIN WOULD REQUIRE A KANSAS STATE BOARD OF AGRICULTURE PERMIT. ANY MATERIAL DUMPED IN WATERS OF THE UNITED STATES OR WETLANDS IS SUBJECT TO U.S. CORPS OF ENGINEERS PERMITTING REGULATIONS. ANY MATERIAL BURIED OR STOCKPILED BEYOND APPROVED CONSTRUCTION LIMITS WOULD REQUIRE ADDITIONAL ARCHAEOLOGICAL INVESTIGATIONS UNLESS BURIED IN A PREVIOUSLY APPROVED BORROW LOCATION.
  - ALL DISTURBED AREAS TO BE SEEDED WITH RYE GRASS AT A RATE OF 200 LBS. PER ACRE WITHIN 10 DAYS OF CONSTRUCTION. CONTRACTOR TO PREPARE GROUND PER CITY SPECIFICATIONS.
  - CONTRACTOR TO COORDINATE WORK WITH OTHER UTILITY AND/OR GRADING/PAVING CONTRACTORS ON SITE.
  - DEVELOPER FOR THIS PROJECT IS:  
RITCHIE ASSOCIATES  
8100 E. 22ND NORTH, #1000  
WICHITA, KS 67226  
CONTACT - ROB RAMSEYER  
(316) 684-7300



LOCATION MAP



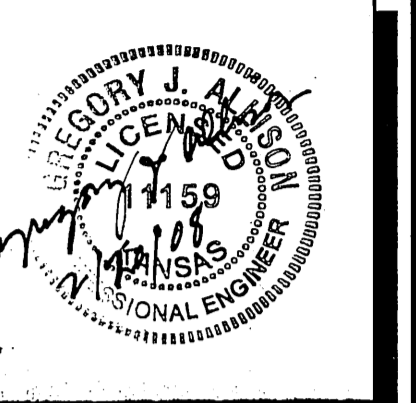
## INDEX TO DRAWINGS

SHEET NO.	DESCRIPTION
1	TITLE SHEET
2-3	DETAILS
4	LINE 1
5	LINE 2
6	LINE 3
7	LINE 4
8	LINES 4 & 5
9	RCB
10-12	RCB DETAILS
13-17	BMP
18-19	FINAL PLAT

## BENCHMARKS

- BM #1 Railroad spike in South face of power pole, 25' +/- East and 70' +/- South of West Quarter Corner of Sec. 26, T 27 S, R 2 E. Elev. = 1337.50 (NGVD)
- BM #2 Chiseled square on top of curb at East end of median island on Lincoln on West side of 127th Street East. Elev. = 1349.55 (NGVD)
- BM #3 Railroad spike in Southwest face of power 4th pole South of Kellogg on East Side of 127th Street East, 973' South and 24' East of Northwest Corner Sec. 26, T 27 S, R 2 E. Elev. = 1353.93 (NGVD)
- BM #4 Fence T-post at Northwest corner of property, 40' East of centerline 127th And 10' South of the South Kellogg right of way. Elev. = 1360.81 (NGVD)
- BM #5 Fence T-post 10' South and 10' West of highway right of way corner, West side K-96 Interchange and South side Kellogg, 969' East and 122' South of Northwest corner Sec. 26, T 27 S, R 2 E. Elev. = 1346.25 (NGVD)
- BM #6 Fence T-post 10' South and 10' West of highway right of way corner, East Side of K-96 Interchange and South side of Kellogg, 1696' East and 770' South of the Northwest corner Sec. 26, T 27 S, R 2 E. Elev. = 1342.08 (NGVD)
- BM #7 Fence T-post 4' South of South Kellogg right of way fence, 145' West-Southwest of the Northeast property corner, 135' West and 176' South of the North Quarter corner of Sec. 26, T 27 S, R 2 E. Elev. = 1326.40 (NGVD)
- BM #8 Railroad spike in south face of power pole, 79' south southeast of the west quarter corner of Section 26, T26S, R2E. Elev. = 1337.46 (NGVD)

**MKEC**  
ENGINEERING  
CONSULTANTS, INC.  
411 N. WEBB ROAD  
WICHITA, K.S. 67206  
316-684-9600



STORM WATER SEWER  
**COUNTRY HOLLOW ADDITION**  
PHASE 2

**TITLE SHEET**  
SHEET TITLE  
468-84114  
PROJECT NUMBER

DFL / SMS / GJA  
DESIGNED / DRAWN / CHECKED

ISSUED  
February 2008

REVISED

SHEET NO.  
1 of 20