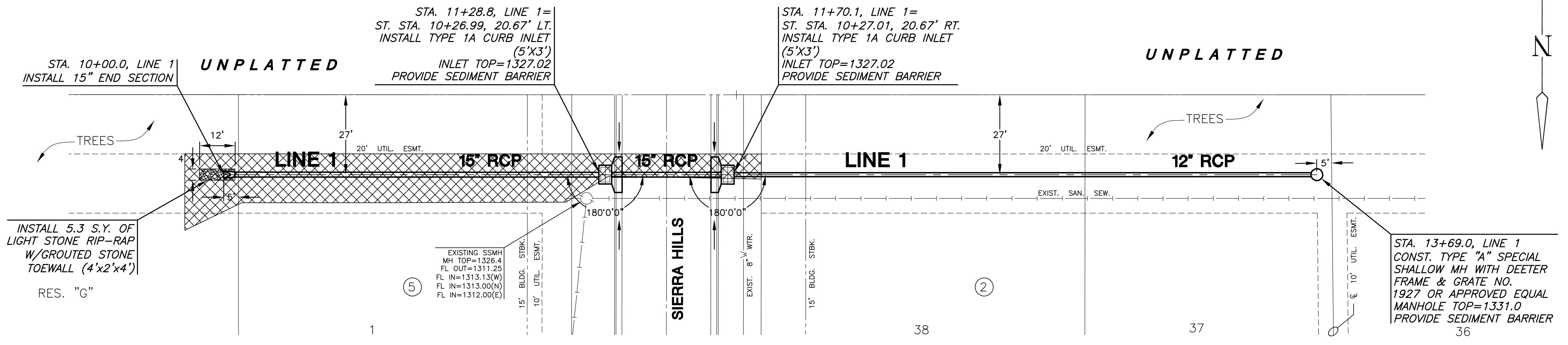
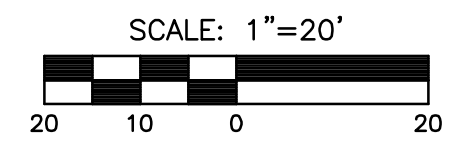


**STORM WATER SEWER  
COUNTRY HOLLOW ADDITION  
PHASE 2**

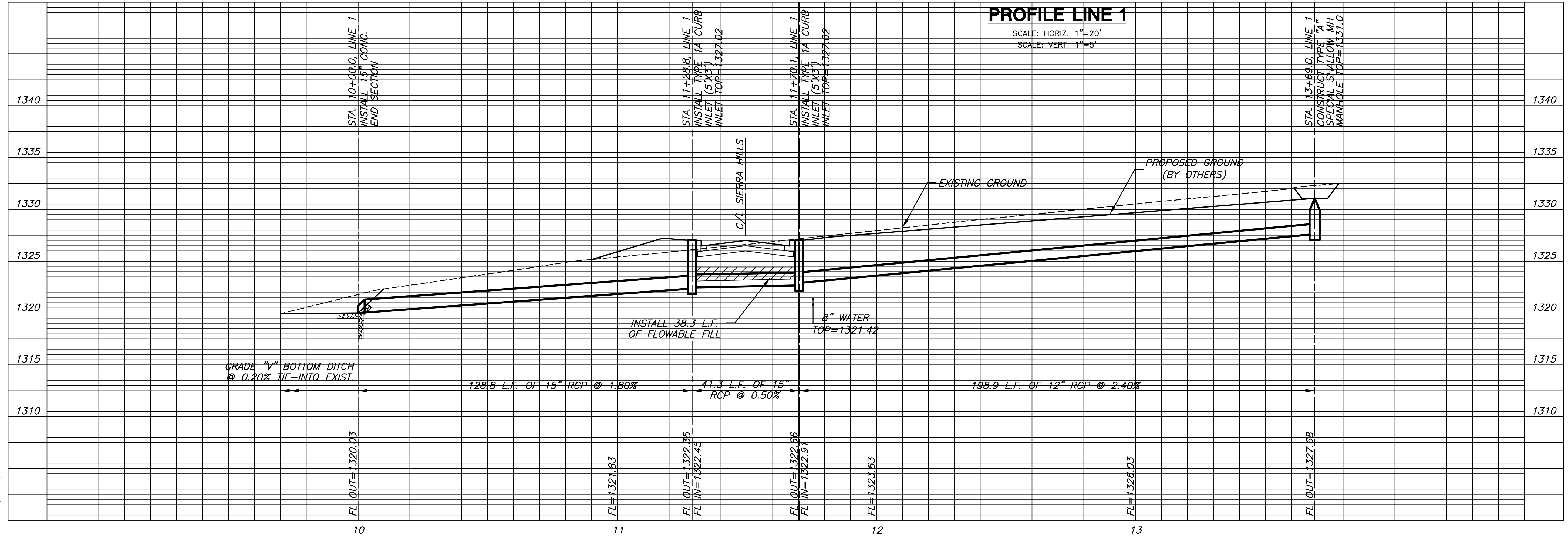


NOTE: CONTRACTOR SHALL MAKE EVERY EFFORT TO SAVE EXISTING TREES. TREE TRIMMING/REMOVAL, WHEN REQUIRED, SHALL BE APPROVED BY THE DEVELOPER AND/OR ENGINEER PRIOR TO COMMENCEMENT.

**PLAN LINE 1**



= TREE REMOVAL



**PROFILE LINE 1**

SCALE: HORIZ. 1"=20'  
SCALE: VERT. 1"=5'

PLOT: 1/19/08 10:42 AM

J:\CIVIL\04429\SW\SW\PHASE 2\04429-D1.DWG

**LINE 1**  
SHEET TITLE  
468-84114  
PROJECT NUMBER

DESIGN BY: **DFL**  
DRAWN BY: **SMS**  
CHECKED BY: **GJA**

ISSUED: **February 2008**  
REVISED:

SHEET NO.  
**4 of 20**