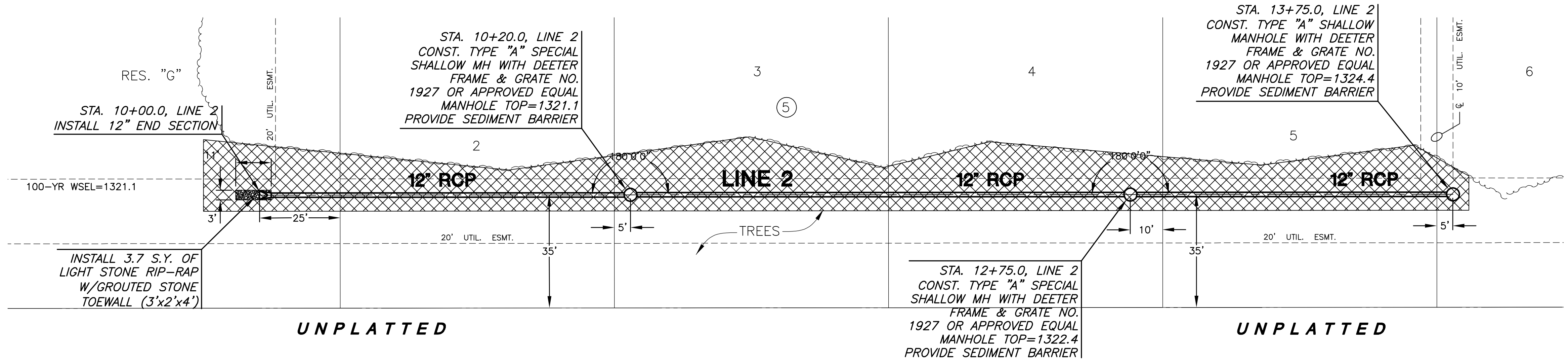


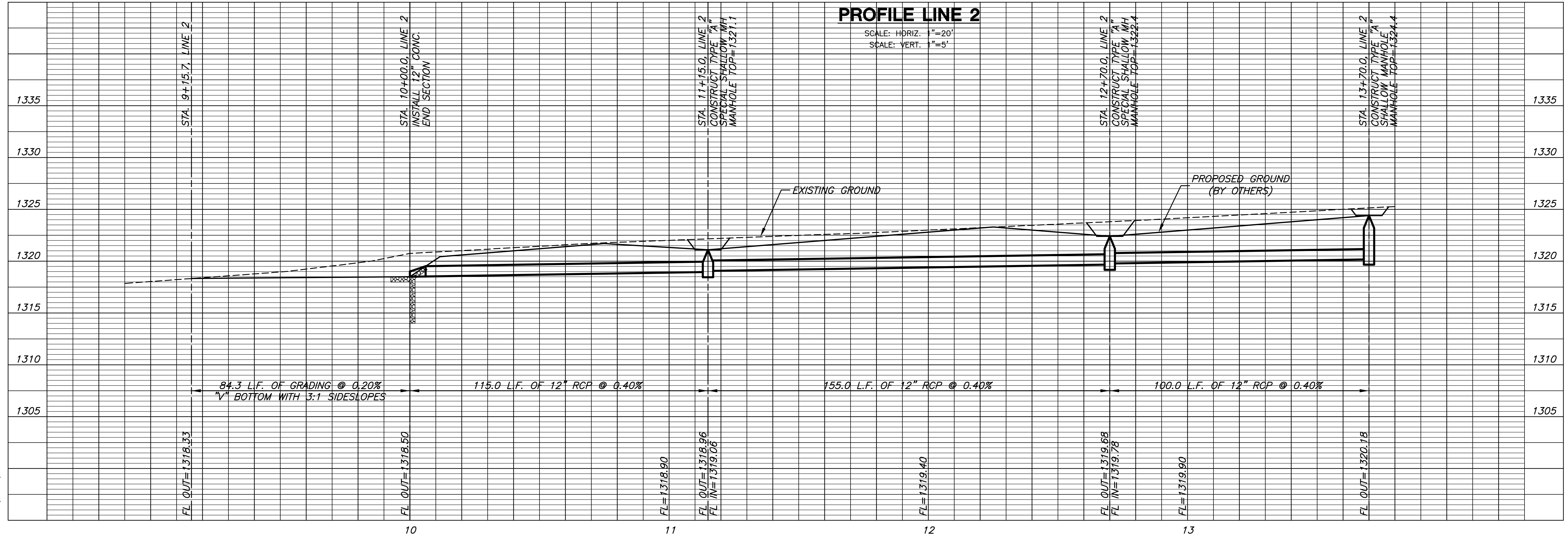
**STORM WATER SEWER  
COUNTRY HOLLOW ADDITION  
PHASE 2**



NOTE: CONTRACTOR SHALL MAKE EVERY EFFORT TO SAVE EXISTING TREES. TREE TRIMMING/REMOVAL, WHEN REQUIRED, SHALL BE APPROVED BY THE DEVELOPER AND/OR ENGINEER PRIOR TO COMMENCEMENT.

**PLAN LINE 2**

**PROFILE LINE 2**



PLOTTED: Tuesday, February 19, 2008 @ 04:42PM

J:\CIVIL\04429\SW\SW\PHASE 2\04429\_D2.DWG

**LINE 2**  
SHEET TITLE  
468-84114  
PROJECT NUMBER

DESIGN BY: DFL  
DRAWN BY: SMS  
CHECKED BY: GJA

ISSUED: February 2008  
REVISED:

SHEET NO.  
5 of 20