

**STORM WATER SEWER  
COUNTRY HOLLOW ADDITION  
PHASE 2**

**BUBBLE MAP**  
SHEET TITLE  
**468-84114**  
PROJECT NUMBER

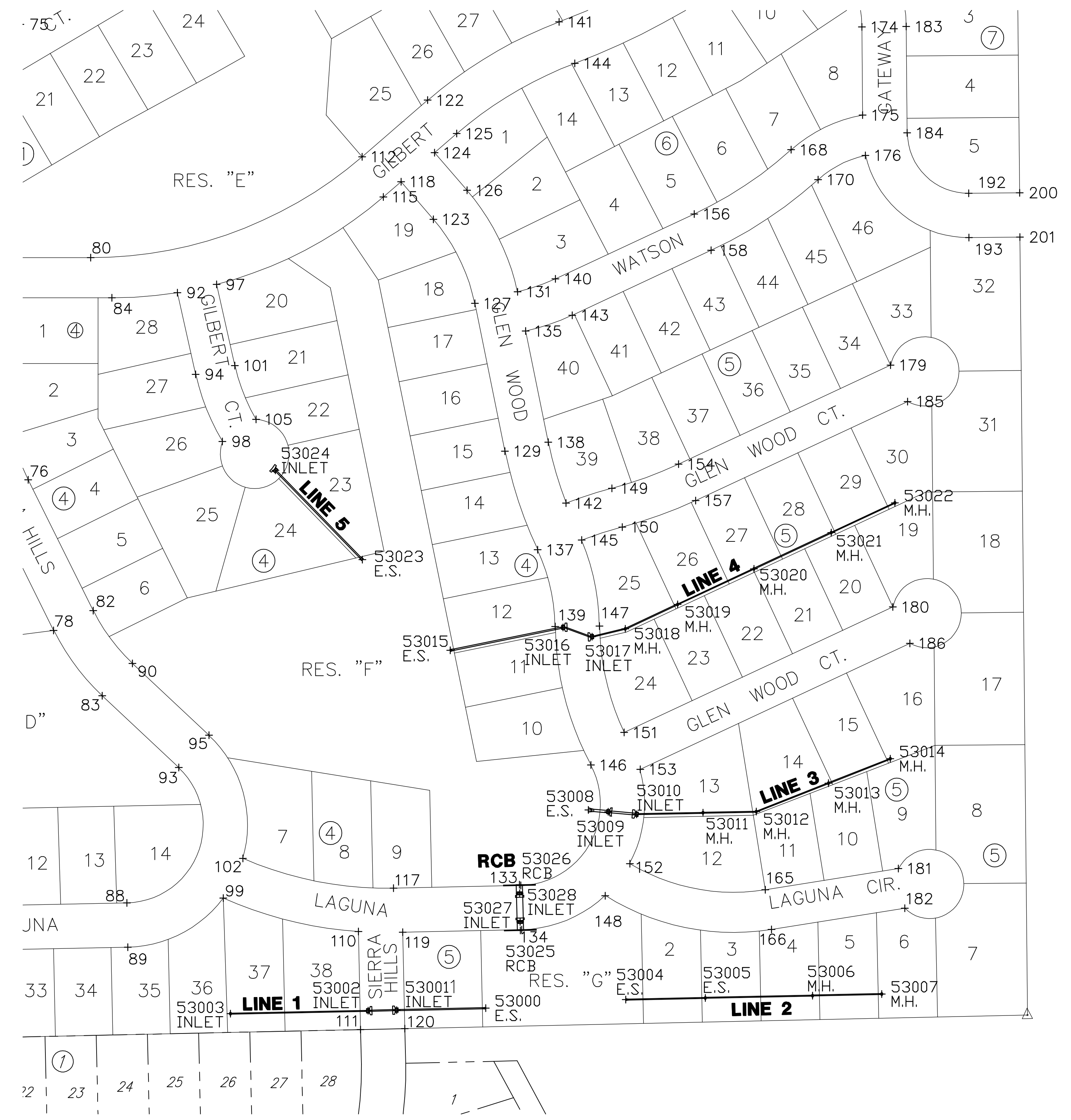
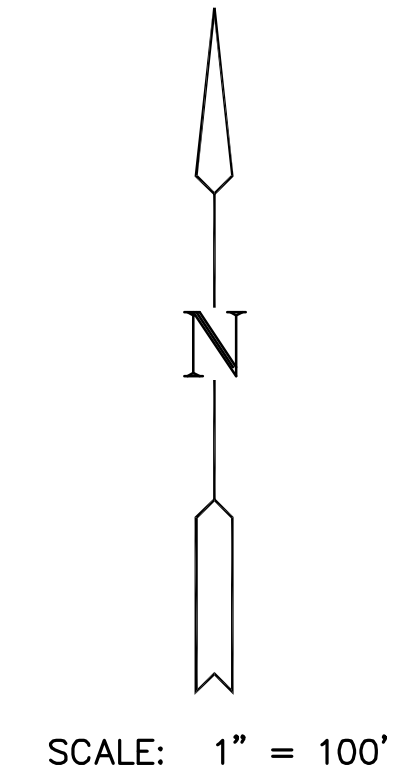
DESIGN BY **DFL**  
DRAWN BY **DM**  
CHECKED BY **GJA**

ISSUED  
**February 2008**  
REVISED

SHEET NO.  
**13 of 20**

Point No.	Northing	Easting	Description
1	1682642.37	1691847.82	PI
2	1682163.41	1691854.00	PI
4	1682062.42	1691855.31	PI
11	1682062.64	1691872.48	PI
16	1682445.77	1692014.38	PI
17	1682165.52	1692017.98	PI
18	1681735.66	1692018.78	PI
20	1681685.64	1692048.14	PI
21	1682092.01	1692050.34	PI
23	1682446.51	1692072.37	PI
25	1682166.43	1692075.97	PI
26	1681409.80	1692093.09	PI
27	1681359.84	1692122.54	PI
28	1682114.90	1692147.60	PI
31	1682240.76	1692337.40	PI
32	1682190.35	1692366.08	PI
33	1681948.95	1692382.07	PI
34	1682207.51	1692396.24	PI
35	1681592.99	1692403.87	PI
36	1681898.93	1692411.43	PI
37	1681543.03	1692433.32	PI
38	1682239.16	1692451.87	PI
39	1682061.72	1692479.20	PI
40	1681997.90	1692506.76	PI
41	1681624.60	1692512.87	PI
42	1681566.63	1692514.71	PI
43	1681941.14	1692518.68	PI
45	1681914.57	1692520.65	PI
46	1681625.14	1692529.86	PI
47	1681567.25	1692534.17	PI
48	1682352.99	1692534.64	PI
49	1682093.37	1692534.82	PI
50	1682302.58	1692563.32	PI
51	1681916.61	1692584.61	PI
52	1681598.19	1692594.75	PI
54	1682417.95	1692699.05	PI
56	1681493.65	1692705.00	PI
57	1681429.67	1692706.37	PI
58	1683396.99	1692713.21	PI
59	1682653.62	1692722.76	PI
60	1682428.86	1692756.02	PI
61	1682667.53	1692812.41	PI
62	1682617.60	1692841.92	PI
64	1682377.29	1692845.93	PI
65	1682435.29	1692845.95	PI
66	1682300.50	1692893.34	PI
67	1682377.27	1692893.37	PI
68	1683402.07	1692930.01	PI
70	1682085.69	1692943.76	PI
71	1682300.48	1692957.34	PI
72	1682377.25	1692957.37	PI
73	1682815.61	1692964.18	PI
75	1682772.34	1692989.76	PI
76	1682114.19	1693001.06	PI
77	1682845.12	1693014.12	PI
78	1681896.57	1693037.81	PI
79	1682801.84	1693039.69	PI
80	1682435.20	1693091.39	PI
82	1681925.07	1693095.11	PI
83	1681802.19	1693108.02	PI
84	1682377.18	1693122.13	PI
86	1683205.71	1693133.57	PI
88	1681503.01	1693143.83	PI
89	1681439.03	1693145.19	PI
90	1681848.88	1693151.79	PI
92	1682384.64	1693216.66	PI
93	1681698.43	1693218.70	PI
94	1682266.64	1693243.12	PI
95	1681745.12	1693262.47	PI
96	1682934.25	1693263.76	PI
97	1682396.51	1693273.44	PI
98	1682169.63	1693281.87	PI
99	1681509.70	1693282.95	PI
100	1682884.32	1693293.27	PI
101	1682279.33	1693299.71	PI
102	1681567.06	1693311.52	PI
105	1682201.58	1693330.35	PI
110	1681481.46	1693478.49	PI
111	1681319.83	1693481.51	PI
112	1682581.06	1693483.74	PI
113	1683212.19	1693483.52	PI
115	1682523.04	1693514.48	PI
117	1681524.23	1693529.07	PI
118	1682545.02	1693539.94	PI
119	1681480.51	1693542.52	PI
120	1681321.22	1693545.49	PI
122	1682662.87	1693578.50	PI
123	1682490.72	1693586.82	PI
124	1682586.85	1693588.38	PI
125	1682614.43	1693620.33	PI
126	1682532.55	1693635.26	PI
127	1682369.13	1693646.57	PI
129	1682155.81	1693690.11	PI
131	1682385.90	1693708.44	PI
133	1681528.16	1693713.03	PI
134	1681464.17	1693714.39	PI
135	1682329.07	1693720.05	PI

Point No.	Northing	Easting	Description
53000	1681350.76	1693662.40	E.S.
53001	1681347.96	1693533.59	INLET
53002	1681347.07	1693492.26	INLET
53003	1681342.75	1693293.38	INLET
53004	1681363.16	1693864.68	E.S.
53005	1681365.65	1693979.65	E.S.
53006	1681369.02	1694134.61	M.H.
53007	1681371.19	1694234.59	M.H.
53008	1681637.22	1693810.79	E.S.
53009	1681634.69	1693839.34	INLET
53010	1681631.03	1693880.51	INLET
53011	1681633.07	1693976.30	M.H.
53012	1681634.72	1694053.30	M.H.
53013	1681675.80	1694157.63	M.H.
53014	1681711.04	1694247.12	M.H.
53015	1681867.76	1693611.04	E.S.
53016	1681901.02	1693774.12	INLET
53017	1681887.49	1693815.92	INLET
53018	1681898.84	1693864.01	M.H.
53019	1681934.25	1693939.83	M.H.
53020	1681985.67	1694049.90	M.H.
53021	1682037.94	1694161.80	M.H.
53022	1682080.89	1694253.76	M.H.
53023	1681998.74	1693483.93	E.S.
53024	1682128.01	1693358.40	INLET
53025	1681463.13	1693712.40	RCB
53026	1681529.11	1693710.99	RCB
53027	1681475.46	1693712.14	INLET
53028	1681516.78	1693711.26	INLET



PLOTTED: Tuesday, February 19, 2008 @ 04:43PM

J:\CIVIL\04429\DWG\SW\SW\PHASE 2\BUBBLE.DWG