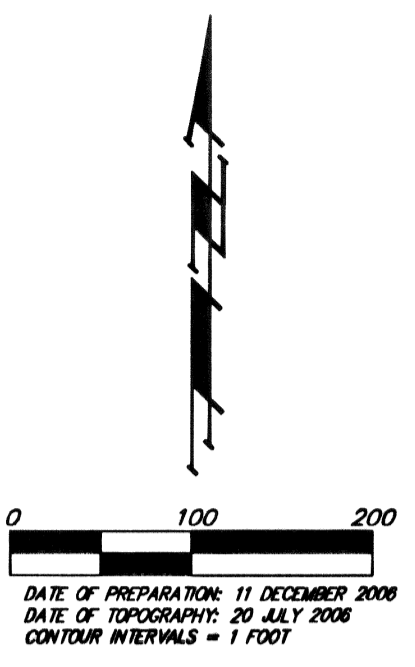
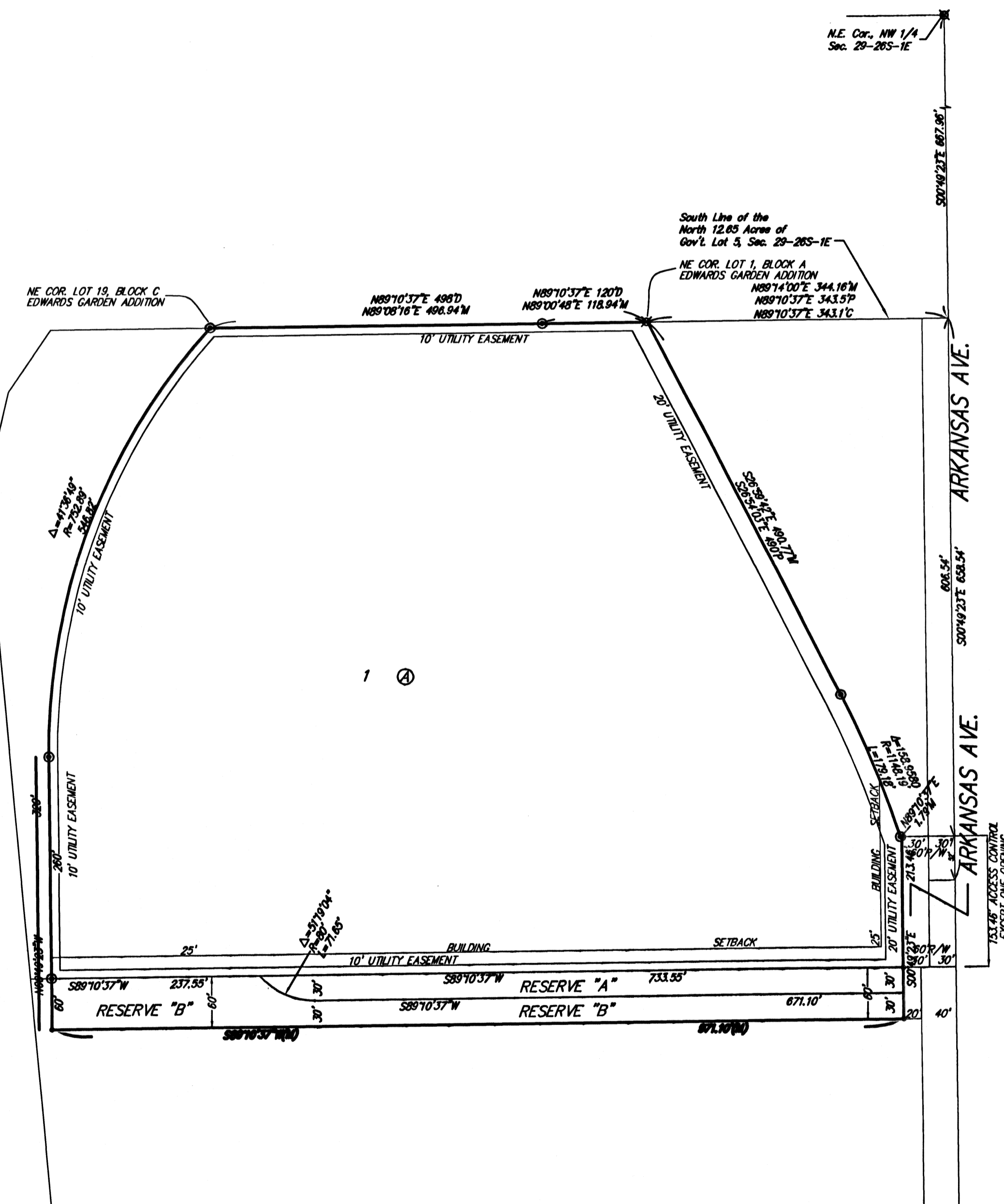


# EARHART ELEMENTARY SCHOOL ADDITION

## WICHITA, SEDGWICK COUNTY, KANSAS

Chisholm Creek Diversion  
Condemnation Case A-30338



OWNER:  
UNIFIED SCHOOL DISTRICT 259  
ATTN: JOE HOOVER  
3850 N HYDRALIC  
WICHITA, 67219  
316-973-2230

CITY OF WICHITA, KANSAS  
ATTN: DOUG KUPPER  
PARK DEPARTMENT  
455 N MAIN  
WICHITA, 67201

## = #4 REBAR W/ "BAUGHMAN" CAP (FOUND)  
# = #4 REBAR W/ "BAUGHMAN" CAP (SET)  
@ = #4 REBAR W/ "SAVOY" CAP (FOUND)  
X = 3/8" REBAR (FOUND)

(M) = MEASURED  
(D) = DESCRIBED  
(P) = PLATTED

MINIMUM BUILDING PAD ELEVATIONS FOR LOWEST OPENING TO THE STRUCTURES		
LOT	BLOCK	ELEVATION
1	A	1325.0

NOTE:  
A master grading plan for drainage has been developed for this subdivision and is on file with the City of Wichita, Kansas. All drainage easements, right-of-ways, or reserves shall remain at established grades or as modified with the approval of the City Engineer of the City of Wichita, Kansas. No obstructions which impede the flow of this drainage system shall be allowed.

Bench Mark: "1" cut on Crosswalk Signal Pole base  
6.4' N and 21.3' E of the NE Cor.  
SE 1/4, NW 1/4 Sec. 29-265-1E  
Elev. 1323.41

State of Kansas) SS We, Baughman Company, P.A., Surveyors in  
Sedgwick County) do hereby certify that we have surveyed and  
platted "EARHART ELEMENTARY SCHOOL ADDITION", Wichita, Sedgwick  
County, Kansas and that the accompanying plat is a true and correct  
exhibit of the property surveyed, described as Lots 1 and 2, except the  
west 54 feet of the north 200 feet of said Lot 2 and Lot 5, except the  
north 48 feet thereof, Block A, and Lots 1, 2, 3, 4, 5, 6, 7, 8, 9, 10, 11,  
12, 13, 14, and 15, Block B, and all of vacated 44th Street North, lying  
east of the east line of Mascot Avenue extended north and all of vacated  
Interurban Drive, lying north of the north line of 43rd Street extended  
east, and all of said 43rd Street lying west of the west line of Arkansas  
Ave., all in Edward's Gardens, Sedgwick County, Kansas, together with that  
part of the South 52 feet of Government Lot 5 in the Northwest Quarter  
of Section 29, Township 26 South, Range 1 East of the Sixth Principal  
Meridian, Sedgwick County, Kansas, and lying east of the center line of the  
abandoned A.V.I. Railroad right-of-way and that part of the Southeast  
Quarter of the Northwest Quarter of said Section 29, lying east of the  
center line of the abandoned A.V.I. Railroad right-of-way, together with  
the west 54 feet of the north 200 feet of Lot 2 and the north 48 feet  
of Lot 5 and all of Lots 3 and 4, Block A, and that part of 44th Street  
North, lying north of the south line of the north 48 feet of Lot 5,  
extended west and east of the east line of Mascot Avenue extended north,  
Edward's Gardens, Sedgwick County, Kansas, together with that part of  
Lots 10, 11, 12, 13, 14, 15, 16, 17, 18 and 19, Block C, Edward's Gardens,  
Sedgwick County, Kansas described as beginning at the NE corner of said  
Lot 19; thence S00°49'23"E, along the west line of Mascot Avenue, as  
platted in said Edward's Gardens, 710 feet to the P.C. of a curve to the  
left, having a radius of 110 feet; thence southerly along said curve and  
through a central angle of 27°02'08", 51.90 feet to the point of  
intersection with the north line of 43rd Street North as extended west;  
thence S89°10'37"W, along said extended north line, 202.02 feet; thence  
N00°49'23"W, 260 feet to the P.C. of a curve to the right having a radius  
of 752.89 feet; thence northeasterly, along said curve and through a  
central angle of 41°36'49", 546.82 feet to the place of beginning, and  
together with that part of Lots 8, 9, and 10, Block C, Edward's Gardens,  
Sedgwick County, Kansas described as follows: Commencing at the P.C.  
of a curve to the left in the east line of Lot 11 in said Block C; thence  
southerly along said curve, having a radius of 110.00 feet and through a  
central angle of 27°02'08", 51.90 feet to the point of intersection with the  
north line of 43rd Street North as extended west, and for a point of  
beginning; thence S89°10'37"W along said extended north line, 202.02 feet;  
thence S00°49'23"E parallel with the southerly extension of the west line  
of Mascot Avenue as platted in said Edward's Gardens, 60.00 feet to the  
intersection with the westerly extension of the south line of said 43rd  
Street North; thence N89°10'37"E along said extended south line, 300.00  
feet to the P.C. of a curve to the right in the north line of Lot 8 in said  
Block C; thence westerly and northeasterly along said curve, having a  
radius of 110.00 feet and through a central angle of 62°57'52", an arc  
distance of 120.88 feet to the point of beginning, and together with all  
of Mascot Avenue as platted in Edward's Gardens, Sedgwick County,  
Kansas, lying north of the north line of 43rd Street North extended west.

Existing public easements and dedications  
being vacated by virtue of K.S.A. 12-512(b).

Baughman Company, P.A.

Michael G. Conroy, Surveyor

Know all men by these presents that we,  
the undersigned, have caused the land in the surveys certificate to be  
platted into a Lot, a Block, Streets, and Reserves to be known as  
"EARHART ELEMENTARY SCHOOL ADDITION", Wichita, Sedgwick County,  
Kansas. The utility easements are hereby granted as indicated for the  
construction and maintenance of all public utilities. The drainage and  
utility easements are hereby granted as indicated for drainage purposes  
and for the construction and maintenance of all public utilities. The  
streets are hereby dedicated to and for the use of the public. Reserves  
"A" and "B" are hereby reserved for open space, landscaping, drainage  
purposes, utilities, and access purposes to or from Arkansas Ave. over  
and across the south line of Lot 1, Block A, Earhart Elementary School  
Addition and over and across the north line of Lots 1, 3, 4, 5, 6, 7, 8, 9,  
and 10, Block C, Edward's Gardens, Sedgwick County, Kansas. Reserve "A"  
shall be owned and maintained by the owner of Lot 1, Block A, in said  
Earhart Elementary School Addition. Reserve "B" shall be owned and  
maintained by the owners of Lots 1, 3, 4, 5, 6, 7, 8, 9, and 10, Block C,  
in said Edward's Gardens. Access controls shall be as depicted on the  
face of the plat and are hereby granted to the City of Wichita, Kansas.  
The permitted opening locations shall be as determined by the City  
Engineer of the City of Wichita, Kansas. The Minimum Building Pad  
Elevations for the lowest opening to the structures shall be as indicated  
on the face of the plat.

Unified School District 259

Sarah Skelton, President  
City of Wichita, Kansas, a Municipal Corporation

Carl Brewer, Mayor

Karen Sublett, City Clerk

This plat of "EARHART ELEMENTARY SCHOOL  
ADDITION", Wichita, Sedgwick County, Kansas has been submitted to and  
approved by the Wichita-Sedgwick County Metropolitan Area Planning  
Commission, Wichita, Kansas.  
Dated this \_\_\_\_\_ day of \_\_\_\_\_, 2007.  
Wichita-Sedgwick County Metropolitan Area Planning Commission

Darrell A. Downing, Chair  
John L. Schlegel, Secretary

This plat approved and all dedications  
shown hereon accepted by the City Council of the City of Wichita,  
Kansas, this \_\_\_\_\_ day of \_\_\_\_\_, 2007.

Carl Brewer, Mayor  
Karen Sublett, City Clerk

Reviewed in accordance with K.S.A. 58-2005  
on this \_\_\_\_\_ day of \_\_\_\_\_, 2007.

Tricia L. Robello, L.S. #1246  
Deputy County Surveyor  
Sedgwick County, Kansas

Entered on transfer record this \_\_\_\_\_ day  
of \_\_\_\_\_, 2007.

Don Brace, County Clerk

State of Kansas) SS This is to certify that this plat has been  
Sedgwick County) filed for record in the office of the Register of Deeds, this \_\_\_\_\_ day  
of \_\_\_\_\_, 2007 at \_\_\_\_\_ o'clock \_\_\_\_\_ M; and is duly recorded.

Bill Meek, Register of Deeds

Tonya Buckingham, Deputy

State of Kansas) SS The foregoing instrument acknowledged before  
Sedgwick County) me, this \_\_\_\_\_ day of \_\_\_\_\_, 2007, by Sarah Skelton, President of  
Unified School District 259, on behalf of the unified school district.

Notary Public

My App't. Exp. \_\_\_\_\_

State of Kansas) SS The foregoing instrument acknowledged before  
Sedgwick County) me, this \_\_\_\_\_ day of \_\_\_\_\_, 2007, by Carl Brewer, Mayor  
of the City of Wichita, Kansas, a Municipal Corporation, on behalf  
of the corporation.

Notary Public

My App't. Exp. \_\_\_\_\_

### EARHART ELEMENTARY SCHOOL

Baughman Company, P.A.  
315 Ellis St. Wichita, KS 67211 P 316-262-7271 F 316-262-0149  
Baughman ENGINEERING | SURVEYING | PLANNING | LANDSCAPE ARCHITECTURE  
E:\PLAT\EARHART ADDITION\DWG\EARHART.DWG\MCG