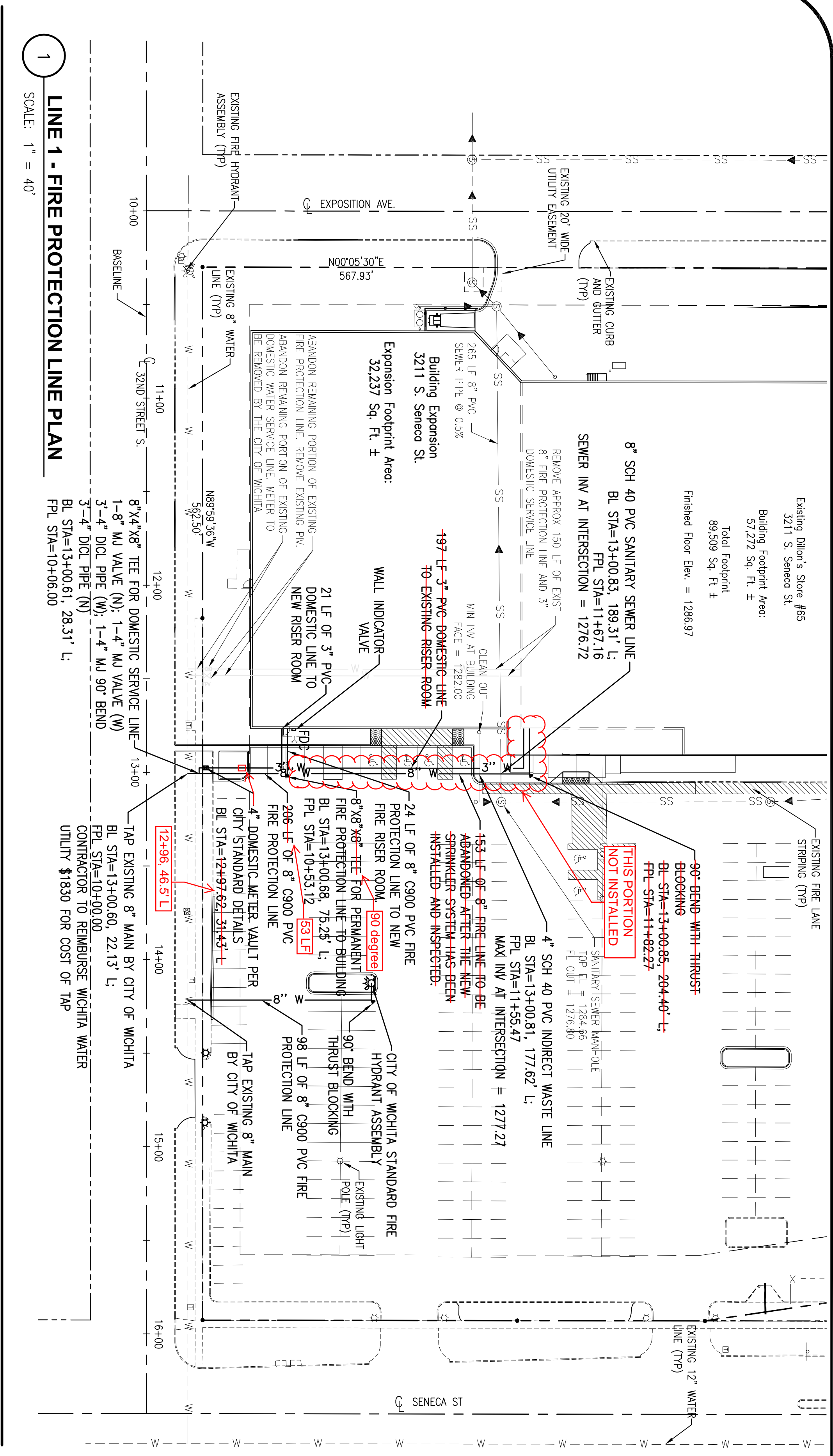
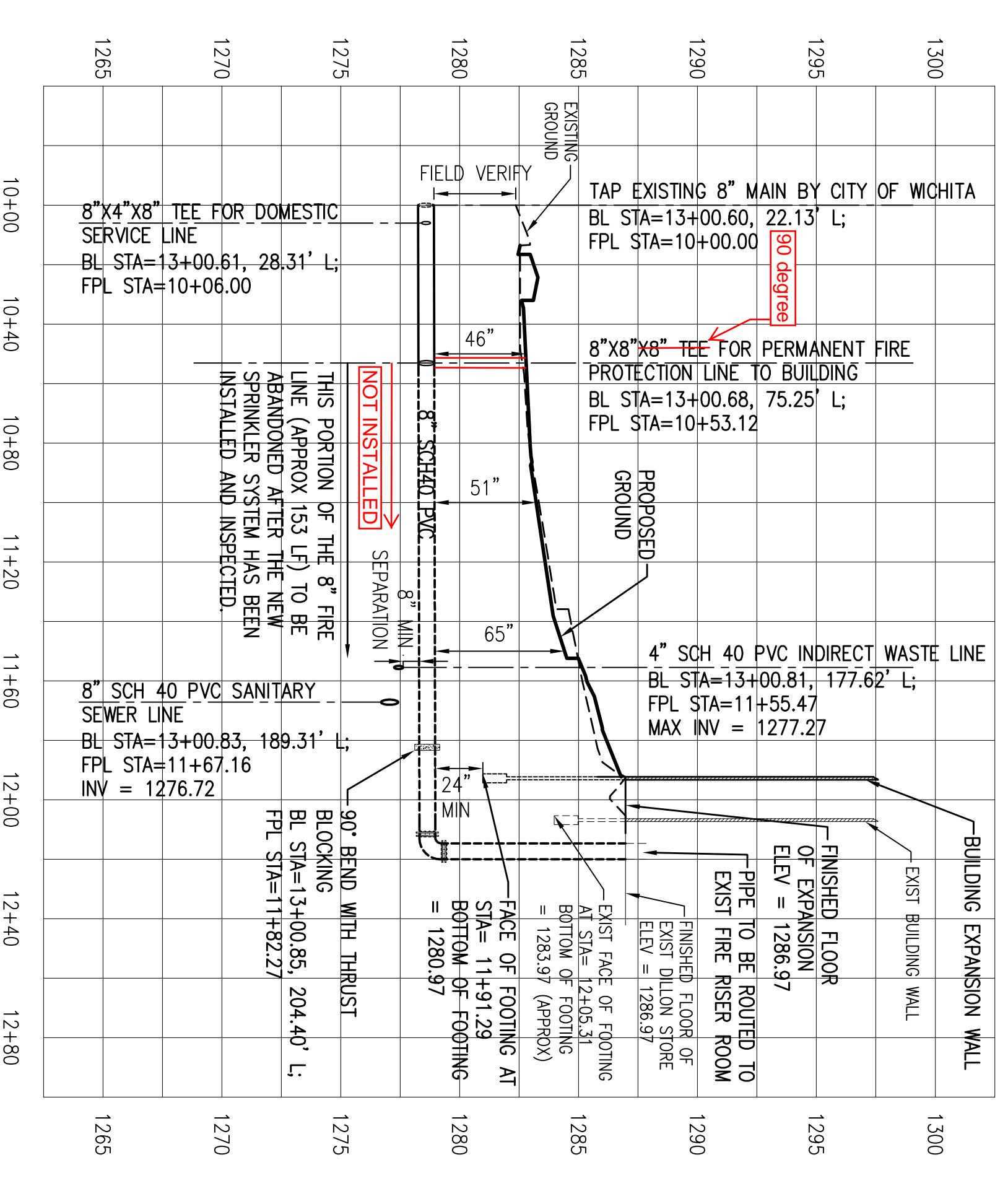


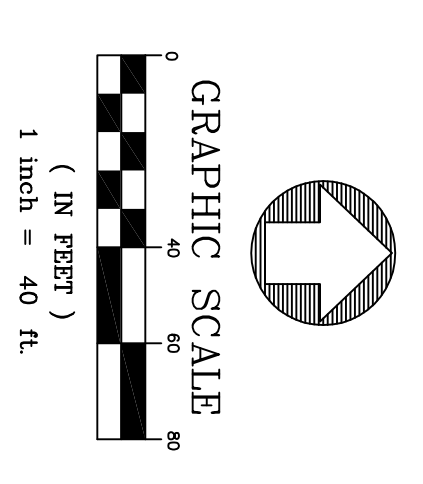
Existing Dillon's Store #65  
3211 S. Seneca St.  
Building Footprint Area:  
57,272 Sq. Ft. ±  
Total Footprint:  
89,509 Sq. Ft. ±  
Finished Floor Elev. = 1286.97



**1**  
LINE 1 - FIRE PROTECTION LINE PLAN  
SCALE: 1" = 40'



**2**  
LINE 1 - FIRE PROTECTION LINE PROFILE  
SCALE: 1" = 40' HORIZONTAL, 1" = 5' VERTICAL



**Site Data:**  
Dillon's Store #65  
3211 S Seneca St  
Wichita, KS 67217  
Zoning: Varies (LC, GC, & CO)  
Parcel Size: 7.23 Acres  
Minimum Required Setbacks:  
35' Along Seneca St. and 31st St.  
20'-25' Along 32nd St. and Exposition Ave

**PICKERING FIRM INCORPORATED UNDERGROUND UTILITIES DISCLAIMER**  
INFORMATION REGARDING THE REPORTED PRESENCE, SIZE, CHARACTER AND LOCATION OF EXISTING UNDERGROUND UTILITIES AND STRUCTURES RELATED TO UNDERGROUND UTILITIES IS SHOWN HEREON. THERE IS NO CERTAINTY OF THE ACCURACY OF THIS INFORMATION AND IT SHALL BE CONSIDERED IN THAT LIGHT BY THOSE USING THIS DRAWING. THE LOCATION AND ARRANGEMENT OF UNDERGROUND UTILITIES AND STRUCTURES RELATED TO UTILITIES AND STRUCTURES SHOWN HEREON MAY BE INACCURATE AND NOT SHOWN MAY BE ENCOUNTERED. THE OWNER, HIS EMPLOYEES, HIS CONSULTANTS AND HIS CONTRACTORS SHALL HEREBY DISTINGUISHLY UNDERSTAND THAT THE ENGINEER IS NOT RESPONSIBLE FOR THE CORRECTNESS OF SUFFICIENCY OF THIS INFORMATION REGARDING THE UNDERGROUND UTILITIES AND STRUCTURES RELATED TO UNDERGROUND UTILITIES SHOWN HEREON.

**SPECIAL FLOOD HAZARD STATEMENT**  
ACCORDING TO THE FEMA/FIRM COMMUNITY PANEL NO. 2003028 0025 B, EFFECTIVE MAY 15, 1986, THE PROPERTY SHOWN HEREON IS LOCATED IN ZONE C, AN AREA OF MINIMAL FLOODING.

**WATER SUPPLY NOTE:**  
CONTRACTOR SHALL ENSURE THAT DOMESTIC WATER SERVICE AND FIRE PROTECTION SERVICE IS PROVIDED TO THE EXISTING DILLON FOOD STORE DURING ALL PHASES OF CONSTRUCTION. COORDINATE WITH PROJECT ENGINEER.

**WATER/SEWER SEPARATION NOTES:**  
1. WHERE POSSIBLE, WATER MAINS SHALL BE LAID AT LEAST 10' HORIZONTALLY AND 24" VERTICALLY FROM ANY SEWER OR MANHOLE (WATER OVER SEWER).  
2. WHERE LOCAL CONDITIONS PREVENT ADEQUATE VERTICAL SEPARATION, THE SANITARY SEWER MUST BE CONSTRUCTED OF DUCTILE IRON, PVC, OR REINFORCED CONCRETE, AND MUST BE PRESSURE TESTED PURSUANT TO CHAPTER VI OF THE KANSAS STANDARD SPECIFICATIONS, AND MUST BE PRESSURE TESTED PURSUANT TO CHAPTER VI OF THE KPMH MINIMUM STANDARD OF DESIGN OF WATER POLLUTION CONTROL FACILITIES.  
3. JOINTS IN THE SEWER PIPE SHALL BE LOCATED A MINIMUM OF 10' FROM THE INTERSECTED WATER MAIN.  
4. WHERE A WATER MAIN IS LAID BELOW THE SANITARY SEWER, REGARDLESS OF CLEAR SPACE, THE SANITARY SEWER SHALL BE REINFORCED CONCRETE ENCASED FOR A DISTANCE OF TEN FEET EACH WAY FROM THE WATER LINE CROSSING.

**UTILITY NOTE:**  
CONTRACTOR SHALL FIELD VERIFY LOCATION OF EXISTING NATURAL GAS, SANITARY SEWER, AND STORM SEWER LINES WHERE CROSSING PROPOSED WATER LINES. CONTRACTOR SHALL PROVIDE ELEVATIONS OF EXISTING UTILITIES TO THE ENGINEER TO VERIFY ADEQUATE CLEARANCE.

**WATER NOTES:**  
1. ALL MATERIALS AND INSTALLATION, TESTING, DISINFECTING, AND INSPECTIONS SHALL CONFORM TO THE CITY OF WICHITA TECHNICAL SPECIFICATIONS, AND THE REQUIREMENTS OF THE STATE OF KANSAS.  
2. ALL PIPE LINES, FIRE HYDRANTS, VALVES, AND FITTINGS ARE TO BE BLOCKED WITH CONCRETE THRUST BLOCKS OR APPROVED EQUAL IN ACCORDANCE WITH CITY OF WICHITA STANDARD DETAILS.  
3. WATER LINES, VALVES, FITTINGS AND HYDRANTS SHALL BE INSTALLED, DISINFECTED, PRESSURE TESTED AND LEAKAGE TESTED IN ACCORDANCE WITH ALL STATE AND LOCAL REQUIREMENTS.  
4. WATER LINES SHALL BE INSTALLED WITH A MINIMUM HORIZONTAL AND VERTICAL CLEARANCE FROM SANITARY SEWER LINES AS REQUIRED BY THE CITY OF WICHITA.  
5. ALL PVC PIPE SHALL BEAR THE NSF SEAL OF APPROVAL.  
6. GC TO INSTALL TEMPORARY DOMESTIC AND FIRE PROTECTION SERVICES TO EXISTING RISER ROOM AS SHOWN, COORDINATE WITH PROJECT ENGINEER. ABANDON TEMPORARY RIGS ONLY AFTER NEW SYSTEM HAS BEEN INSTALLED AND INSPECTED.

**WATER/SEWER SEPARATION NOTES:**  
1. WHERE POSSIBLE, WATER MAINS SHALL BE LAID AT LEAST 10' HORIZONTALLY AND 24" VERTICALLY FROM ANY SEWER OR MANHOLE (WATER OVER SEWER).  
2. WHERE LOCAL CONDITIONS PREVENT ADEQUATE VERTICAL SEPARATION, THE SANITARY SEWER MUST BE CONSTRUCTED OF DUCTILE IRON, PVC, OR REINFORCED CONCRETE, AND MUST BE PRESSURE TESTED PURSUANT TO CHAPTER VI OF THE KANSAS STANDARD SPECIFICATIONS, AND MUST BE PRESSURE TESTED PURSUANT TO CHAPTER VI OF THE KPMH MINIMUM STANDARD OF DESIGN OF WATER POLLUTION CONTROL FACILITIES.  
3. JOINTS IN THE SEWER PIPE SHALL BE LOCATED A MINIMUM OF 10' FROM THE INTERSECTED WATER MAIN.  
4. WHERE A WATER MAIN IS LAID BELOW THE SANITARY SEWER, REGARDLESS OF CLEAR SPACE, THE SANITARY SEWER SHALL BE REINFORCED CONCRETE ENCASED FOR A DISTANCE OF TEN FEET EACH WAY FROM THE WATER LINE CROSSING.

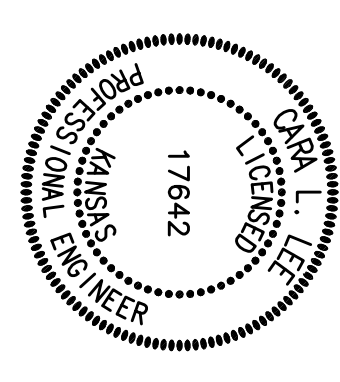
SYMBOL/LEGEND	ABBREVIATIONS
⊙ LIGHT POLE	EP EDGE OF PAVEMENT
⊙ TELEPHONE BOX	ROW RIGHT OF WAY
⊙ TELEPHONE PEDestal	⊕ CENTERLINE
⊙ SANITARY SEWER MANHOLE	⊕ REINFORCED CONCRETE PIPE
⊙ WATER VALVE	⊕ CONC.
⊙ FIRE HYDRANT	⊕ CORRUGATED METAL PIPE
⊙ CURB INLET	⊕ CWP SUBJECT PROPERTY LINE
⊙ DRAIN INLET	TC TOP OF CURB
⊙ STORM SEWER MANHOLE	BC BOTTOM OF CURB
⊙ MONITOR WELL	POB POINT OF BEGINNING
⊙ GAS METER	HKR HANDICAP RAMP
⊙ ELECTRIC METER	⊕ HANDICAP PARKING/ACCESS
⊙ VALVE BOX	BO BLOW OUT
⊙ CLEAN OUT	FDC FIRE DEPARTMENT CONNECTION
⊙ UTILITY ACCESS COVER	BL BASE LINE
⊙ WALLY	FPL FIRE PROTECTION LINE

LINE LEGEND	LINE LEGEND
—○— EXIST. OVERHEAD ELECTRIC LINES	—○— OVERHEAD ELECTRIC LINES
—○— EXIST. UNDERGROUND ELECTRIC LINES	—○— UNDERGROUND ELECTRIC LINES
—○— EXIST. GAS LINE	—○— GAS LINE
—○— EXIST. WATER LINE	—○— WATER LINE
—○— EXIST. SANITARY SEWER LINE	—○— SANITARY SEWER LINE
—○— EXIST. OVERHEAD TELEPHONE LINE	—○— OVERHEAD TELEPHONE LINE
—○— EXIST. UNDERGROUND TELEPHONE LINE	—○— UNDERGROUND TELEPHONE LINE
—○— EXIST. DRAINAGE/STORM SEWER LINE	—○— DRAINAGE/STORM SEWER LINE
—○— FENCE	—○— FENCE
—○— SUBJECT AREA BOUNDARY	—○— SUBJECT AREA BOUNDARY
—○— OVERHEAD ELECTRIC LINES	—○— OVERHEAD ELECTRIC LINES
—○— UNDERGROUND ELECTRIC LINES	—○— UNDERGROUND ELECTRIC LINES
—○— GAS LINE	—○— GAS LINE
—○— WATER LINE	—○— WATER LINE
—○— SANITARY SEWER LINE	—○— SANITARY SEWER LINE
—○— OVERHEAD TELEPHONE LINE	—○— OVERHEAD TELEPHONE LINE
—○— UNDERGROUND TELEPHONE LINE	—○— UNDERGROUND TELEPHONE LINE
—○— DRAINAGE/STORM SEWER LINE	—○— DRAINAGE/STORM SEWER LINE
—○— FENCE	—○— FENCE

**NOTE:**  
REPAIR ALL EXIST. ASPHALT PAVEMENT, CONCRETE CURB AND GUTTER, AND REPLACE SOD AND LANDSCAPING AS REQUIRED FOR UTILITY CONSTRUCTION

**NOTE:**  
EXISTING CONDITIONS AND UTILITY INFORMATION WAS PROVIDED BY THE SAVOY COMPANY, P.A.

**UTILITY NOTE:**  
CONTRACTOR SHALL SUPPLY AND INSTALL ALL ITEMS AND PERFORM ALL WORK NOT COVERED BY UTILITY COMPANIES. VERIFY INSTALLATION PROCEDURE WITH UTILITY COMPANY.



**Pickering Firm**  
Pickering Architecture/Engineering/Management  
Incorporated  
1001 West 10th Street  
Wichita, KS 67203  
Tel: 316.261.8800  
Fax: 316.261.8801

**DILLON'S FOOD STORE #65 BUILDING EXPANSION**  
PROJECT NAME  
PLAN & PROFILE OF FIRE PROTECTION LINE #1  
SHEET NO.  
DATE: 04-05-07  
DRAWN BY: AJP  
CHECKED BY: CLM  
SCALE: 2 OF 6