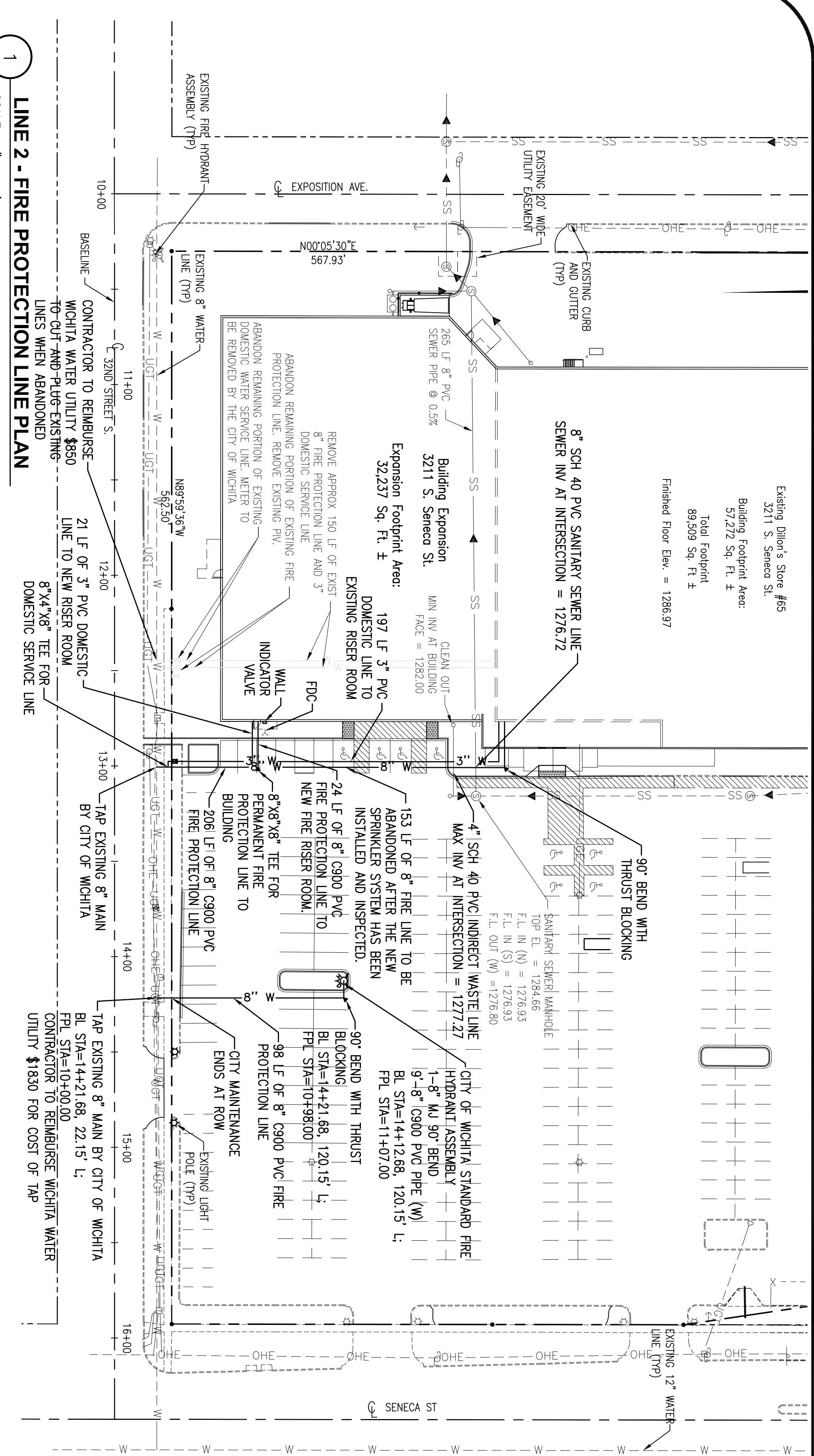
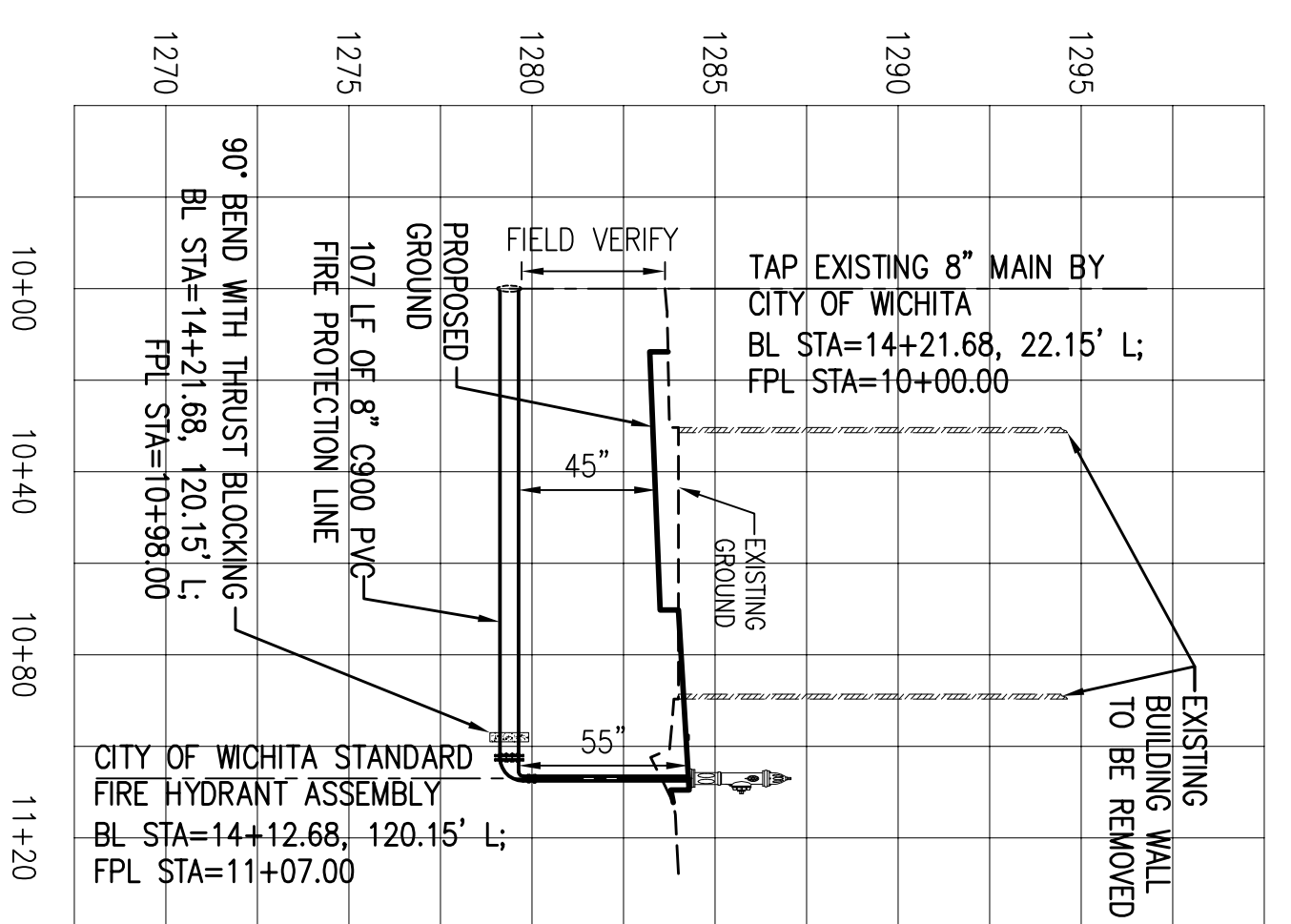


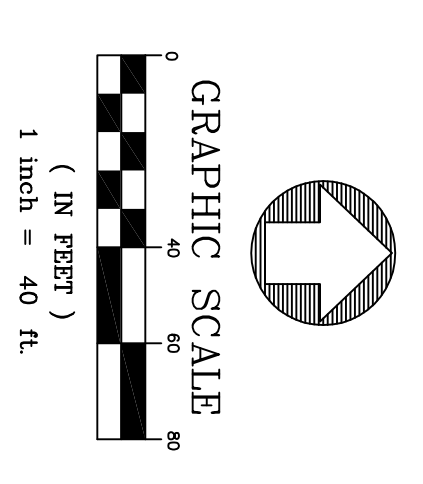
Existing Dillon's Store #65
3211 S. Seneca St.
Building Footprint Area:
3,727 Sq. Ft. ±
Total Footprint
89,509 Sq. Ft. ±
Finished Floor Elev. = 1286.97



1
SCALE: 1" = 40'



2
SCALE: 1" = 40' HORIZONTAL, 1" = 5' VERTICAL



PICKERING FIRM INCORPORATED UNDERGROUND UTILITIES DISCLAIMER

INFORMATION REGARDING THE REPORTED PRESENCE, SIZE, CHARACTER AND LOCATION OF EXISTING UNDERGROUND UTILITIES AND STRUCTURES RELATED TO UNDERGROUND UTILITIES IS SHOWN HEREON. THERE IS NO CERTAINTY OF THE ACCURACY OF THIS INFORMATION AND IT SHALL BE CONSIDERED IN THAT LIGHT BY THOSE USING THIS DRAWING. THE LOCATION AND ARRANGEMENT OF UNDERGROUND UTILITIES AND STRUCTURES RELATED TO UNDERGROUND UTILITIES SHOWN HEREON MAY BE INACCURATE AND UTILITIES AND STRUCTURES RELATED TO UNDERGROUND UTILITIES NOT SHOWN MAY BE ENCOUNTERED. THE OWNER, HIS EMPLOYEES, HIS CONSULTANTS AND HIS CONTRACTORS SHALL HEREBY DISTINCTLY UNDERSTAND THAT THE ENGINEER IS NOT RESPONSIBLE FOR THE CORRECTNESS OF SUFFICIENCY OF THIS INFORMATION REGARDING THE UNDERGROUND UTILITIES AND STRUCTURES RELATED TO UNDERGROUND UTILITIES SHOWN HEREON.

SPECIAL FLOOD HAZARD STATEMENT

ACCORDING TO THE FEMA/FIRM COMMUNITY PANEL NO. 200328 0025 B, EFFECTIVE MAY 15, 1986, THE PROPERTY SHOWN HEREON IS LOCATED IN ZONE C, AN AREA OF MINIMAL FLOODING.

WATER SUPPLY NOTE:

CONTRACTOR SHALL ENSURE THAT DOMESTIC WATER SERVICE AND FIRE PROTECTION SERVICE IS PROVIDED TO THE EXISTING DILLON FOOD STORE DURING ALL PHASES OF CONSTRUCTION. COORDINATE WITH PROJECT ENGINEER.

Site Data:

Dillon's Store #65
3211 S Seneca St
Wichita, KS 67217

Zoning: Varies (LC, GC, & CO)

Parcel Size: 7.23 Acres

Minimum Required Setbacks:
35' Along Seneca St. and 31st St.
20'-25' Along 32nd St. and Exposition Ave

UTILITY NOTE:

CONTRACTOR SHALL FIELD VERIFY LOCATION OF EXISTING NATURAL GAS, SANITARY SEWER, AND STORM SEWER LINES WHERE CROSSING PROPOSED WATER LINES. CONTRACTOR SHALL PROVIDE ELEVATIONS OF EXISTING UTILITIES TO THE ENGINEER TO VERIFY ADEQUATE CLEARANCE.

WATER NOTES:

1. ALL MATERIALS AND INSTALLATION, TESTING, DISINFECTING, AND INSPECTIONS SHALL CONFORM TO THE CITY OF WICHITA TECHNICAL SPECIFICATIONS, AND THE REQUIREMENTS OF THE STATE OF KANSAS.
2. ALL PIPE LINES, FIRE HYDRANTS, VALVES, AND FITTINGS ARE TO BE BLOCKED WITH CONCRETE THRUST BLOCKS OR APPROVED EQUAL IN ACCORDANCE WITH CITY OF WICHITA STANDARD DETAILS.
3. WATER LINES, VALVES, FITTINGS AND HYDRANTS SHALL BE INSTALLED, DISINFECTED, PRESSURE TESTED AND LEAKAGE TESTED IN ACCORDANCE WITH ALL STATE AND LOCAL REQUIREMENTS.
4. WATER LINES SHALL BE INSTALLED WITH A MINIMUM HORIZONTAL AND VERTICAL CLEARANCE FROM SANITARY SEWER LINES AS REQUIRED BY THE CITY OF WICHITA.
5. ALL PVC PIPE SHALL BEAR THE NSF SEAL OF APPROVAL.
6. GC TO INSTALL TEMPORARY DOMESTIC AND FIRE PROTECTION SERVICES TO EXISTING RISER ROOM AS SHOWN. COORDINATE WITH PROJECT ENGINEER. ABANDON TEMPORARY RIGS ONLY AFTER NEW SYSTEM HAS BEEN INSTALLED AND INSPECTED.

WATER/SEWER SEPARATION NOTES:

1. WHERE POSSIBLE, WATER MAINS SHALL BE LAID AT LEAST 10' HORIZONTALLY AND 24" VERTICALLY FROM ANY SEWER OR MANHOLE (WATER OVER SEWER).
2. WHERE LOCAL CONDITIONS PREVENT ADEQUATE VERTICAL SEPARATION, THE SANITARY SEWER MUST BE CONSTRUCTED OF DUCTILE IRON, PVC, OR REINFORCED CONCRETE, THE SEWER LINE MUST MEET REQUIREMENTS OF THE CITY OF WICHITA STANDARD SPECIFICATIONS, AND MUST BE PRESSURE TESTED PURSUANT TO CHAPTER VI OF THE KDMH MINIMUM STANDARD OF DESIGN OF WATER POLLUTION CONTROL FACILITIES.
3. JOINTS IN THE SEWER PIPE SHALL BE LOCATED A MINIMUM OF 10' FROM THE INTERSECTED WATER MAIN.
4. WHERE A WATER MAIN IS LAID BELOW THE SANITARY SEWER, REGARDLESS OF CLEAR SPACE, THE SANITARY SEWER SHALL BE REINFORCED CONCRETE ENCASED FOR A DISTANCE OF TEN FEET EACH WAY FROM THE WATER LINE CROSSING.

SYMBOL/LEGEND	ABBREVIATIONS
☉ LIGHT POLE	EP EDGE OF PAVEMENT
☐ ELECTRIC BOX	ROW RIGHT OF WAY
⊕ TELEPHONE FOOTSTAL	☉ CENTERLINE
⊕ SANITARY SEWER MANHOLE	⊕ REINFORCED CONCRETE PIPE
⊕ WATER VALVE	CONC. CONCRETE
⊕ FIRE HYDRANT	⊕ CORRUGATED METAL PIPE
⊕ CURB INLET	R SUBJECT PROPERTY LINE
⊕ DRAIN INLET	TC TOP OF CURB
⊕ STORM SEWER MANHOLE	BC BOTTOM OF CURB
⊕ MONITOR WELL	POB POINT OF BEGINNING
⊕ RECOVERY WELL	⊕ HANDICAP RAMP
⊕ GAS WATER	⊕ HANDICAP PARKING/ACCESS
⊕ ELECTRIC METER	B.O. BLOW OUT
⊕ VALVE BOX	⊕ FLD FIRE DEPARTMENT CONNECTION
⊕ CLEAN OUT	
⊕ UTILITY ACCESS COVER	
⊕ WALLY	

NOTE:

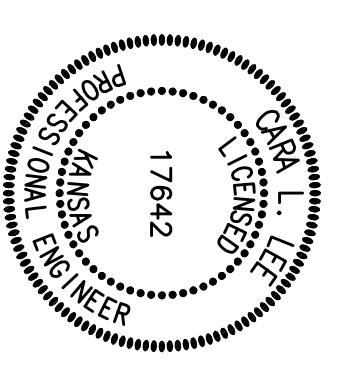
REPAIR ALL EXIST. ASPHALT PAVEMENT, CONCRETE CURB AND GUTTER, AND REPLACE SOD AND LANDSCAPING AS REQUIRED FOR UTILITY CONSTRUCTION

NOTE:

ALL SYMBOLS, ABBREVIATIONS, OR LINES/STYLES DO NOT NECESSARILY APPEAR ON DRAWING(S). USE ONLY AS APPLICABLE.

UTILITY NOTE:

CONTRACTOR SHALL SUPPLY AND INSTALL ALL ITEMS AND PERFORM ALL WORK NOT COVERED BY UTILITY COMPANIES. VERIFY INSTALLATION PROCEDURE WITH UTILITY COMPANY.



Pickering Firm Incorporated
Planning, Architecture, Engineering, Management

1002 West 10th Street
Wichita, KS 67203
913.262.8810
913.272.8811 FAX

DILLON'S FOOD STORE #65 BUILDING EXPANSION
PROJECT NAME
PLAN & PROFILE OF FIRE PROTECTION LINE #2
SHEET NO.
ATP
DATE: 04-05-07
DRAWN BY: ATP
CHECKED BY: CLM
DATE: 2/04/07
3 OF 6