

Ramp A Sta. 301+00.27 Extend  
5.0 Sq. Ft. x 44.6' CRP (RCPHE)  
6' Rt. with End Section (Rt.).  
Connect to existing CRP  
with a Pipe Collar (Type A).  
See Sh. No. 13, 32 & 33

Sta. 52+25.63 Install  
10.0 Sq. Ft. x 198' CRP (RCPHE)  
with End Sections.  
Rotate 6°00'-00" Lt.  
Remove Exist. 10.0 Sq. Ft. x 125.4'  
CRP (CMMAC).  
See Sh. No. 13, 32 & 33

Sta. 49+05.60 Construct  
Inlet (Type III)(Special)  
38.5' Lt.  
See Sh. No. 25

Sta. 49+06 Construct  
6'x3'x117' RCB  
Connect to Exist. Conc. Ditch (Rt.).  
Rotate 0°28'26" Lt.  
Remove 6'x3'x83' RCB  
See Sh. No. 37, 38 & 39

CAUTION!!!  
Existing Telephone  
Duct Bank to Remain.

Sta. 49+06.23 Construct  
Inlet (Type II)(Special)  
38.5' Rt.  
See Sh. No. 25

Ramp B Sta. 298+94.71 Extend  
24'x51.4' CRP(RCP) 24' Rt.  
with End Section (Rt.).  
Connect to existing CRP  
with a Pipe Collar (Type A).  
See Sh. No. 13, 31 & 33

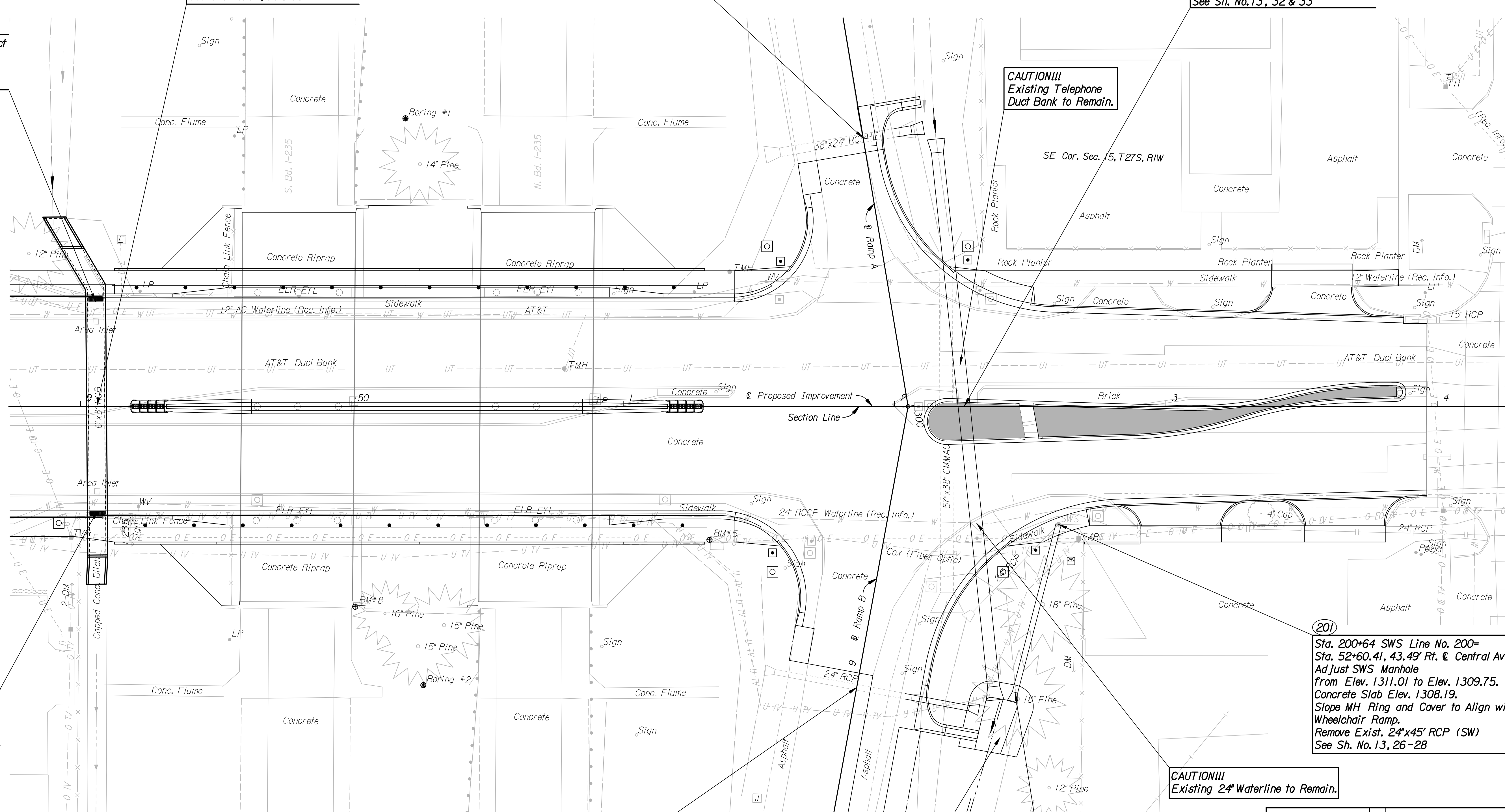
Ramp B Sta. 298+80 to Sta. 299+00  
Construct Concrete Ditch Lining Rt.  
See Sh. No. 30

(200)  
Sta. 200+00 SWS Line No. 200=  
Sta. 52+44.39, 105.45' Rt. & Central Ave.=  
Sta. 299+03.35, 57.70' Rt. @ Ramp B  
Install 24'x64' SWS (RCP) (N)  
with End Section.  
Connect to Existing SWS Manhole.  
See Sh. No. 13, 31 & 33

(201)  
Sta. 200+64 SWS Line No. 200=  
Sta. 52+60.41, 43.49' Rt. @ Central Ave.  
Adjust SWS Manhole  
from Elev. 1311.01 to Elev. 1309.75.  
Concrete Slab Elev. 1308.19.  
Slope MH Ring and Cover to Align with  
Wheelchair Ramp.  
Remove Exist. 24'x45' RCP (SW)  
See Sh. No. 13, 26-28

CAUTION!!!  
Existing 24" Waterline to Remain.

DSNR: PMJ OPER: AKL SCALE: 1" = 20'  
I:/2006/06655/Profile/06655-PLSWS.dgn LAST REV: 11-27-2007 BY: drp



No.	Revision	By	Date
CENTRAL AVENUE			
<b>CRP AND SWS PLAN</b>			
JAMES L. ARMOUR, P.E. - CITY ENGINEER CITY OF WICHITA PROJECT NO. 472-84639			
<b>Professional Engineering Consultants, P.A.</b> 303 S. TOPEKA • WICHITA, KANSAS 67202 316-262-2691 • FAX 316-262-3003			
Designed by	PMJ	Job No.	06655
Drawn by	AKL	Date	Jan. 2008
			Sht. 12 of 142

