

UTILITY LEGEND

= Fire Hydrant	= Flag Pole
= Water Meter	= SS Manhole
= Water Valve	= SWS Manhole
= Gas Meter	= Sign
= Gas Valve	= Misc. Post
= Telephone Riser	= Guy Anchor
= Mailbox	= Power Pole
= Deciduous Tree or Shrub	= Light Pole
= Existing Fence	
= Right of Way Line	
= Underground Telephone	
= Underground Electric	
= Overhead Electric	
= Water Line	
= Sanitary Sewer	
= Gas Line	
= Cable TV or Fiber Optic	

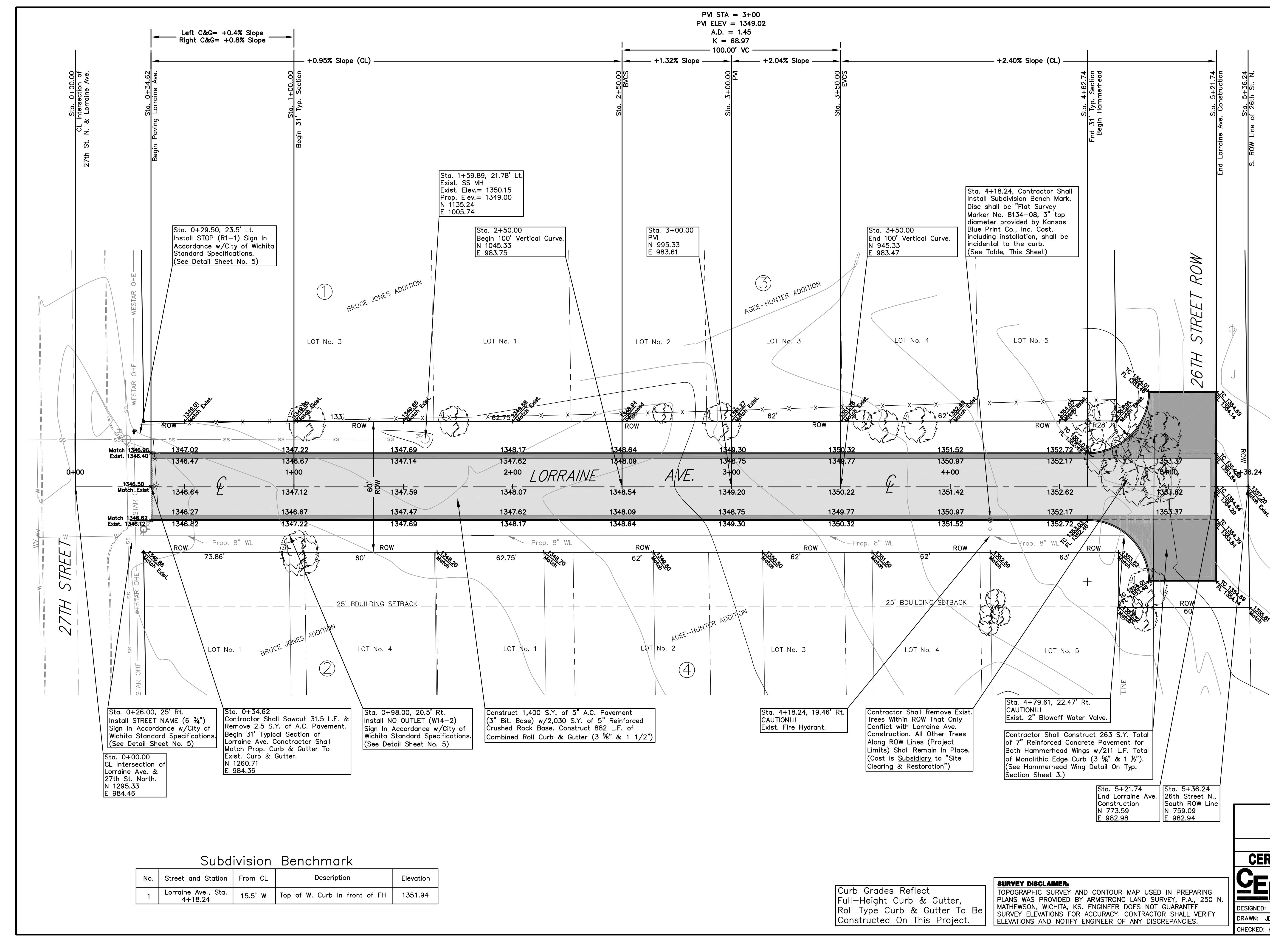
- Proposed 5" A.C. Pavement on 5" Crushed Rock Base
 - Proposed Concrete Curb & Gutter or Concrete Pavement
 - Propose Pavement Removal
- Benchmark:**
Found on Top of Curb Return 29.84 L.F. South & 15.48 L.F. East of CL Chautauqua Ave. & 26th St. North. Elev.=1349.94

UTILITIES SHOWN REPRESENT THE BEST INFORMATION AVAILABLE FOR DESIGN. ADDITIONAL UTILITIES MAY BE PRESENT ON THIS PROJECT. THE CONTRACTOR SHALL BE RESPONSIBLE FOR DETERMINING THE EXACT LOCATION, DEPTH AND SIZE OF ALL UNDERGROUND UTILITIES PRIOR TO CONSTRUCTION. THE CONTRACTOR SHALL BE LIABLE FOR ANY DAMAGE CAUSED BY THE FAILURE TO DO SO.

PAVING PLAN FOR
LORRAINE AVE.
WICHITA, SEDGWICK COUNTY, KANSAS
CED PROJ. NO.: 20071632

CERTIFIED ENGINEERING DESIGN, P.A.
810 WEST DOUGLAS, SUITE C
WICHITA, KANSAS 67203
PH.(316)262-8808 FAX.(316)262-1699

DESIGNED: HDF	SCALE: 1"=20'	SHEET
DRAWN: JDT	DATE: 12-07	4
CHECKED: HDF	CED FILE: Lorraine Ave-Base	TOTAL 12



Sta. 0+29.50, 23.5' Lt.
Install STOP (R1-1) Sign in Accordance w/City of Wichita Standard Specifications. (See Detail Sheet No. 5)

Sta. 1+59.89, 21.78' Lt.
Exist. SS MH
Exist. Elev.= 1350.15
Prop. Elev.= 1349.00
N 1135.24
E 1005.74

Sta. 2+50.00
Begin 100' Vertical Curve.
N 1045.33
E 983.75

Sta. 3+00.00
PVI
N 995.33
E 983.61

Sta. 3+50.00
End 100' Vertical Curve.
N 945.33
E 983.47

Sta. 4+18.24, Contractor Shall Install Subdivision Bench Mark. Disc shall be "Flat Survey Marker No. 8134-08, 3" top diameter provided by Kansas Blue Print Co., Inc. Cost, including installation, shall be incidental to the curb. (See Table, This Sheet)

Sta. 0+26.00, 25' Rt.
Install STREET NAME (6 3/4") Sign in Accordance w/City of Wichita Standard Specifications. (See Detail Sheet No. 5)

Sta. 0+34.62
Contractor Shall Sawcut 31.5 L.F. & Remove 2.5 S.Y. of A.C. Pavement. Begin 31' Typical Section of Lorraine Ave. Contractor Shall Match Prop. Curb & Gutter To Exist. Curb & Gutter.
N 1260.71
E 984.36

Sta. 0+98.00, 20.5' Rt.
Install NO OUTLET (W14-2) Sign in Accordance w/City of Wichita Standard Specifications. (See Detail Sheet No. 5)

Construct 1,400 S.Y. of 5" A.C. Pavement (3" Bit. Base) w/2,030 S.Y. of 5" Reinforced Crushed Rock Base. Construct 882 L.F. of Combined Roll Curb & Gutter (3 3/8" & 1 1/2")

Sta. 4+18.24, 19.46' Rt.
CAUTION!!!
Exist. Fire Hydrant.

Contractor Shall Remove Exist. Trees Within ROW That Only Conflict with Lorraine Ave. Construction. All Other Trees Along ROW Lines (Project Limits) Shall Remain in Place. (Cost is Subsidiary to "Site Clearing & Restoration")

Sta. 4+79.61, 22.47' Rt.
CAUTION!!!
Exist. 2" Blowoff Water Valve.

Contractor Shall Construct 263 S.Y. Total of 7" Reinforced Concrete Pavement for Both Hammerhead Wings w/211 L.F. Total of Monolithic Edge Curb (3 3/8" & 1 1/2"). (See Hammerhead Wing Detail On Typ. Section Sheet 3.)

Sta. 5+21.74
End Lorraine Ave.
Construction
N 773.59
E 982.98

Sta. 5+36.24
26th Street N.,
South ROW Line
N 759.09
E 982.94

Subdivision Benchmark

No.	Street and Station	From CL	Description	Elevation
1	Lorraine Ave., Sta. 4+18.24	15.5' W	Top of W. Curb In front of FH	1351.94

Curb Grades Reflect Full-Height Curb & Gutter, Roll Type Curb & Gutter To Be Constructed On This Project.

SURVEY DISCLAIMER:
TOPOGRAPHIC SURVEY AND CONTOUR MAP USED IN PREPARING PLANS WAS PROVIDED BY ARMSTRONG LAND SURVEY, P.A., 250 N. MATHEWSON, WICHITA, KS. ENGINEER DOES NOT GUARANTEE SURVEY ELEVATIONS FOR ACCURACY. CONTRACTOR SHALL VERIFY ELEVATIONS AND NOTIFY ENGINEER OF ANY DISCREPANCIES.