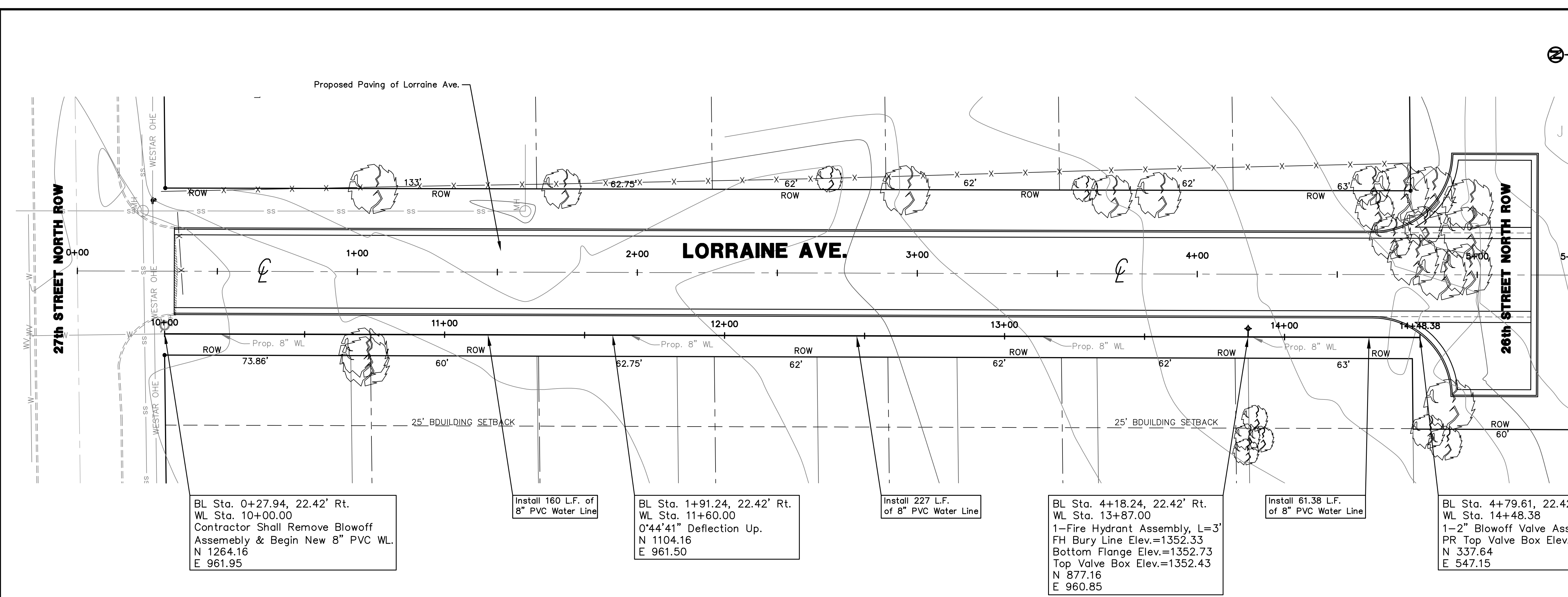


UTILITY LEGEND

	= Fire Hydrant		= Flag Pole
	= Water Meter		= SS Manhole
	= Water Valve		= SWS Manhole
	= Gas Meter		= Sign
	= Gas Valve		= Misc. Post
	= Telephone Riser		= Guy Anchor
	= Mailbox		= Power Pole
	= Deciduous Tree or Shrub		= Light Pole
	= Existing Fence		
	= Right of Way Line		
	= Underground Telephone		
	= Underground Electric		
	= Overhead Electric		
	= Water Line		
	= Sanitary Sewer		
	= Gas Line		
	= Cable TV or Fiber Optic		

Benchmark:
 Found on Top of Curb Return
 29.84 L.F. South & 15.48 L.F.
 East of CL Chautauqua Ave. &
 26th St. North.
 Elev.=1349.94

UTILITIES SHOWN REPRESENT THE BEST INFORMATION AVAILABLE FOR DESIGN. ADDITIONAL UTILITIES MAY BE PRESENT ON THIS PROJECT. THE CONTRACTOR SHALL BE RESPONSIBLE FOR DETERMINING THE EXACT LOCATION, DEPTH AND SIZE OF ALL UNDERGROUND UTILITIES PRIOR TO CONSTRUCTION. THE CONTRACTOR SHALL BE LIABLE FOR ANY DAMAGE CAUSED BY THE FAILURE TO DO SO.



BL Sta. 0+27.94, 22.42' Rt.
 WL Sta. 10+00.00
 Contractor Shall Remove Blowoff Assembly & Begin New 8" PVC WL.
 N 1264.16
 E 961.95

Install 160 L.F. of 8" PVC Water Line

BL Sta. 1+91.24, 22.42' Rt.
 WL Sta. 11+60.00
 0'44'41" Deflection Up.
 N 1104.16
 E 961.50

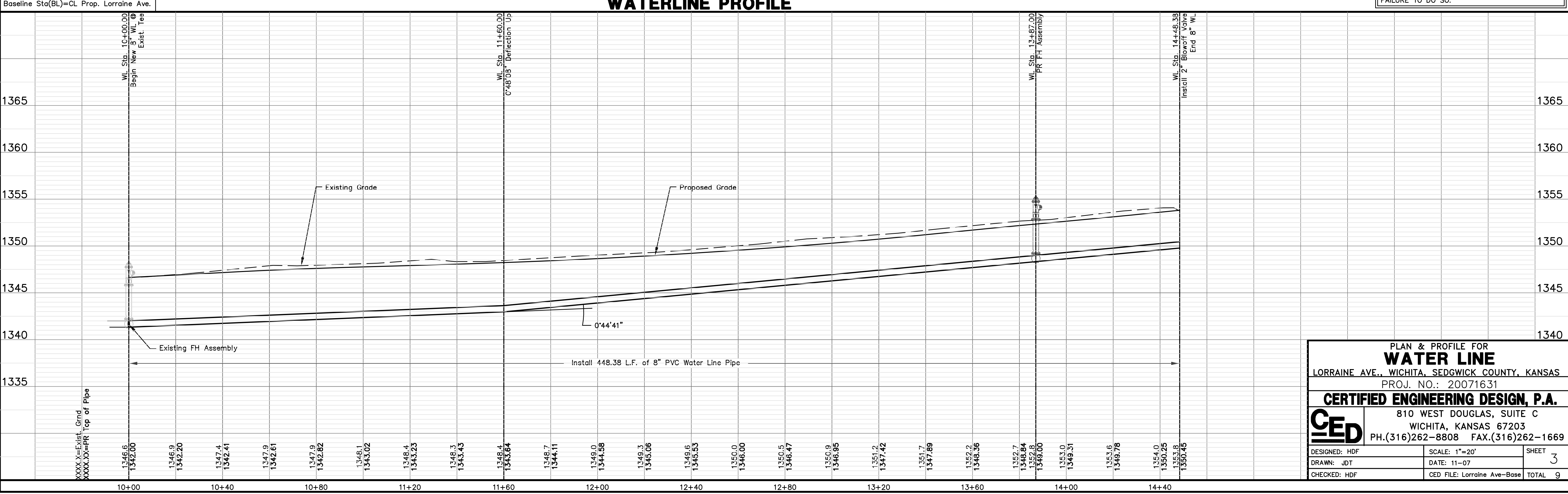
Install 227 L.F. of 8" PVC Water Line

BL Sta. 4+18.24, 22.42' Rt.
 WL Sta. 13+87.00
 1-Fire Hydrant Assembly, L=3'
 FH Bury Line Elev.=1352.33
 Bottom Flange Elev.=1352.73
 Top Valve Box Elev.=1352.43
 N 877.16
 E 960.85

Install 61.38 L.F. of 8" PVC Water Line

BL Sta. 4+79.61, 22.42' Rt.
 WL Sta. 14+48.38
 1-2" Blowoff Valve Assembly
 PR Top Valve Box Elev.=1354.0
 N 337.64
 E 547.15

WATERLINE PROFILE



PLAN & PROFILE FOR
WATER LINE
 LORRAINE AVE., WICHITA, SEDGWICK COUNTY, KANSAS
 PROJ. NO.: 20071631

CERTIFIED ENGINEERING DESIGN, P.A.
 810 WEST DOUGLAS, SUITE C
 WICHITA, KANSAS 67203
 PH.(316)262-8808 FAX.(316)262-1669

DESIGNED: HDF	SCALE: 1"=20'	SHEET
DRAWN: JDT	DATE: 11-07	3
CHECKED: HDF	CED FILE: Lorraine Ave-Base	TOTAL 9