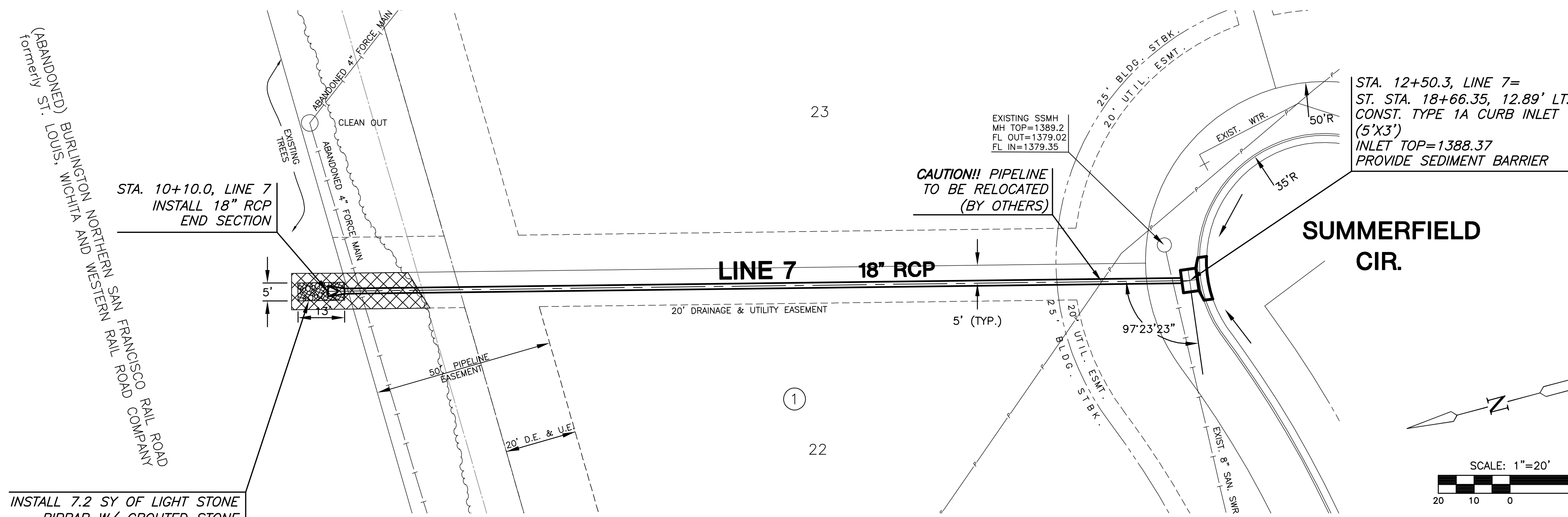


THE WATERFRONT RESIDENTIAL ADDITION



STA. 12+50.3, LINE 7 =
ST. STA. 18+66.35, 12.89' LT.
CONST. TYPE 1A CURB INLET
(5'X3')
INLET TOP=1388.37
PROVIDE SEDIMENT BARRIER

CAUTION!! PIPELINE
TO BE RELOCATED
(BY OTHERS)

STA. 10+10.0, LINE 7
INSTALL 18" RCP
END SECTION

INSTALL 7.2 SY OF LIGHT STONE
RIPRAP W/ GROUTED STONE
TOEWALL (2'X4'X5')

NOTE: ALL RIPRAP SHALL BE
INSTALLED TO STD. SPEC. WITH
TOE WALLS ON ALL UNPROTECTED
EDGES. THE TOE WALL SHOWN
ON THE PLANS SHALL BE IN
ADDITION TO THE STD. SPEC.

= TREE REMOVAL

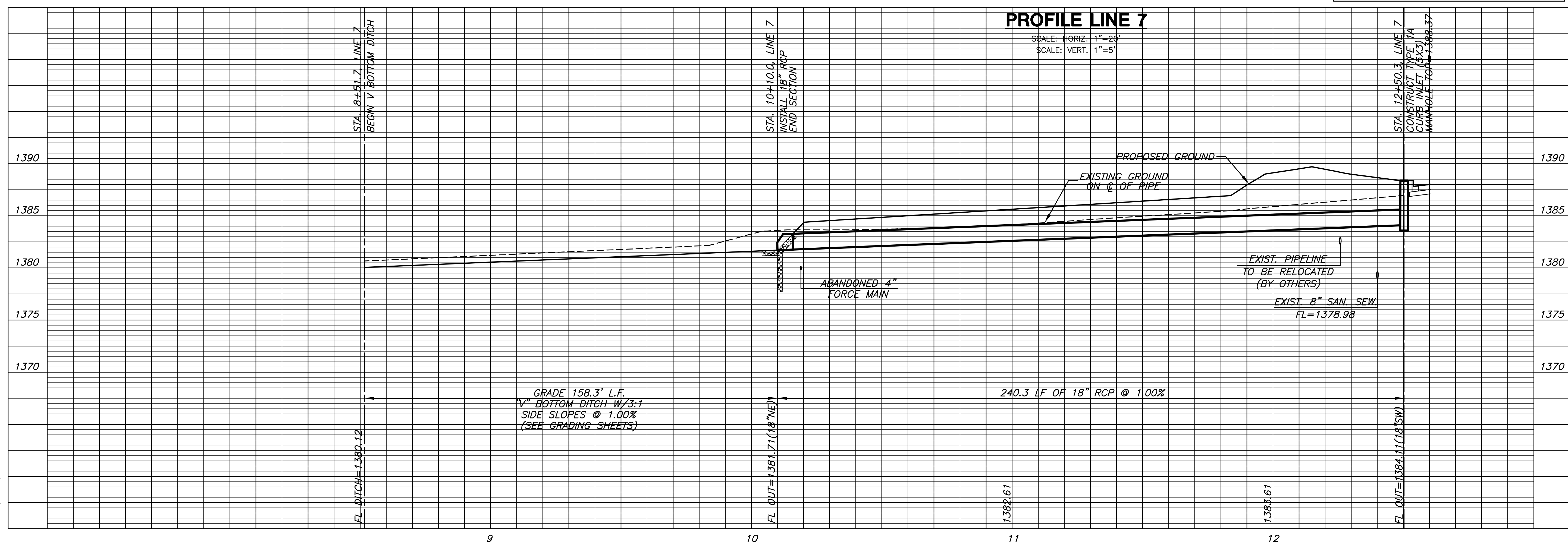
THE WATERFRONT RESIDENTIAL ADDITION

PLAN LINE 7

NOTE: CONTRACTOR SHALL MAKE EVERY
EFFORT TO SAVE EXISTING TREES. TREE
TRIMMING/REMOVAL, WHEN REQUIRED, SHALL
BE APPROVED BY THE DEVELOPER AND/OR
ENGINEER PRIOR TO COMMENCEMENT.

PROFILE LINE 7

SCALE: HORIZ. 1"=20'
SCALE: VERT. 1"=5'



STORM WATER SEWER PLANS FOR
**WATERFRONT RESIDENTIAL
ADDITION**

LINES 6 & 7
SHEET TITLE
468-84423
PROJECT NUMBER

DESIGN BY: SRS
DRAWN BY: JWC
CHECKED BY: GJA

ISSUED: February 2008
REVISED:

SHEET NO.
14 of 34