

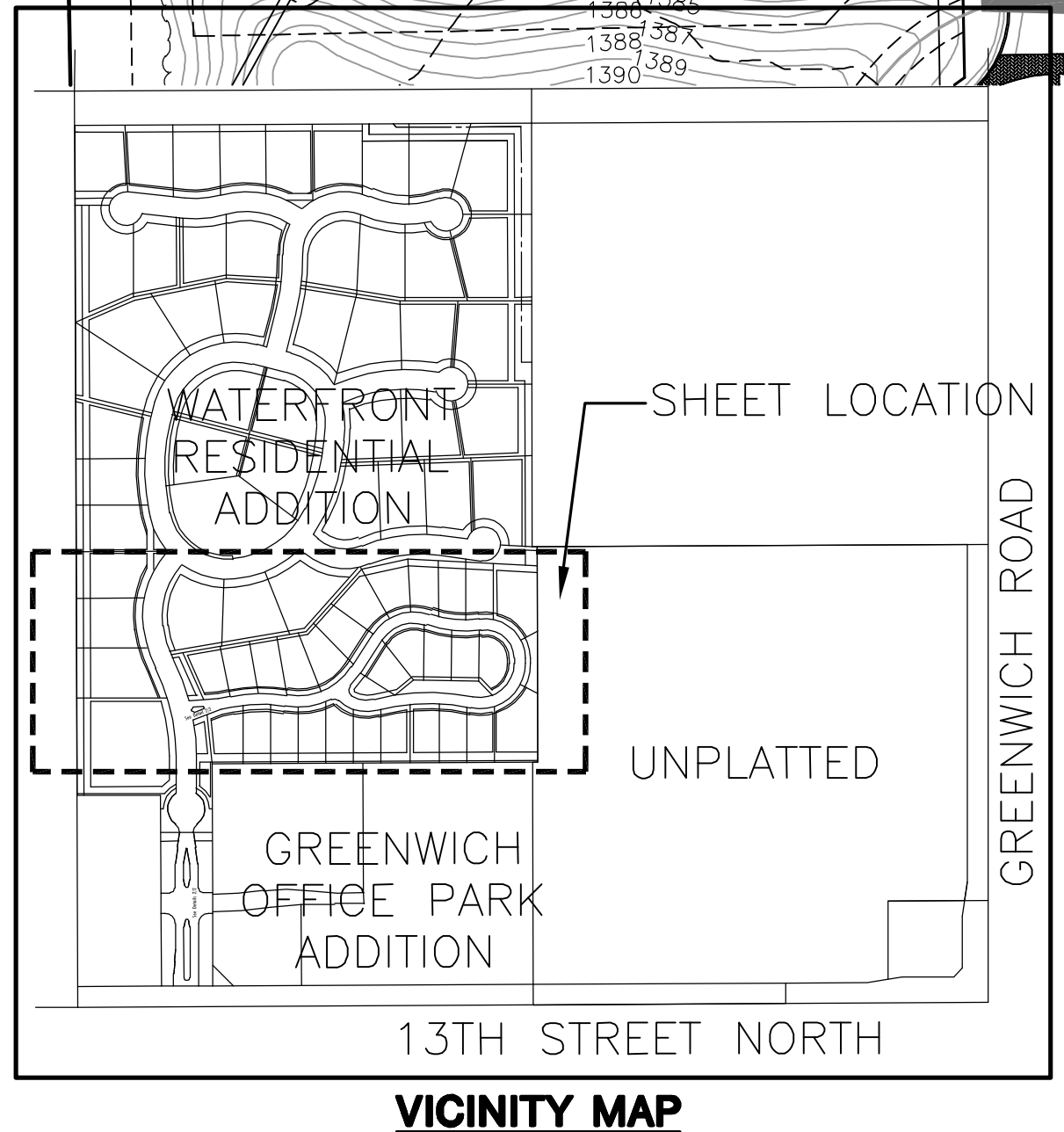
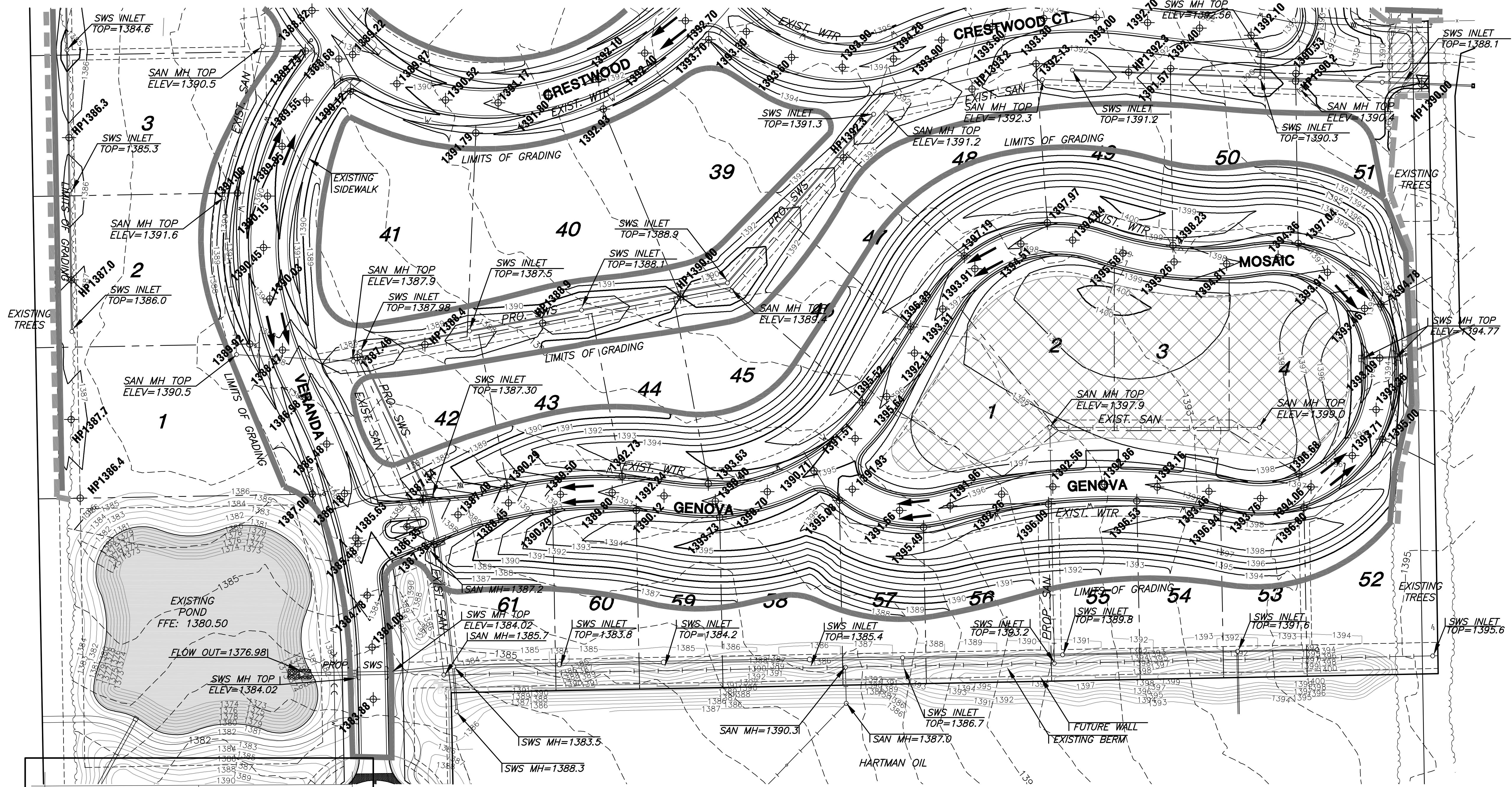
**STORM WATER SEWER PLANS FOR
WATERFRONT RESIDENTIAL
ADDITION**

**GRADING
PLAN**
SHEET TITLE
468-84423
PROJECT NUMBER

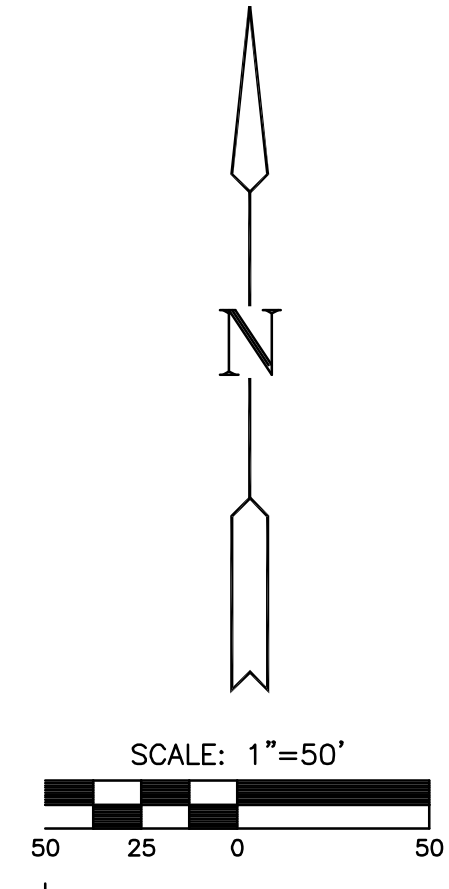
MLP
DESIGN BY
MLP
DRAWN BY
GJA
CHECKED BY

ISSUED
February 2008
REVISED

SHEET NO.
23 of 34



EXCAVATION AREA NOTES:
REMOVE TOPSOIL FROM EXCAVATION
AREA AND STOCKPILE UNTIL
EXCAVATION IS COMPLETE THEN
REPLACE OVER DISTURBED AREA.
COST SUBSIDIARY TO EARTHWORK.
CONTRACTOR TO INSURE POSITIVE
DRAINAGE OUT OF EXCAVATION AREA.



- LEGEND**
- PROPOSED TREE PROTECTION
 - PROPOSED STORM WATER SEWER
 - EXISTING WATER LINE
 - EXISTING SANITARY SEWER LINE
 - 1359--- EXISTING CONTOURS
 - 1360--- PROPOSED CONTOURS
 - LIMITS OF GRADING
 - NORMAL POOL
 - DRAINAGE ARROWS
 - TREE REMOVAL
 - 3,500 CU. YDS WAS PLACED IN THE AREA WITH OTHER PROJECT