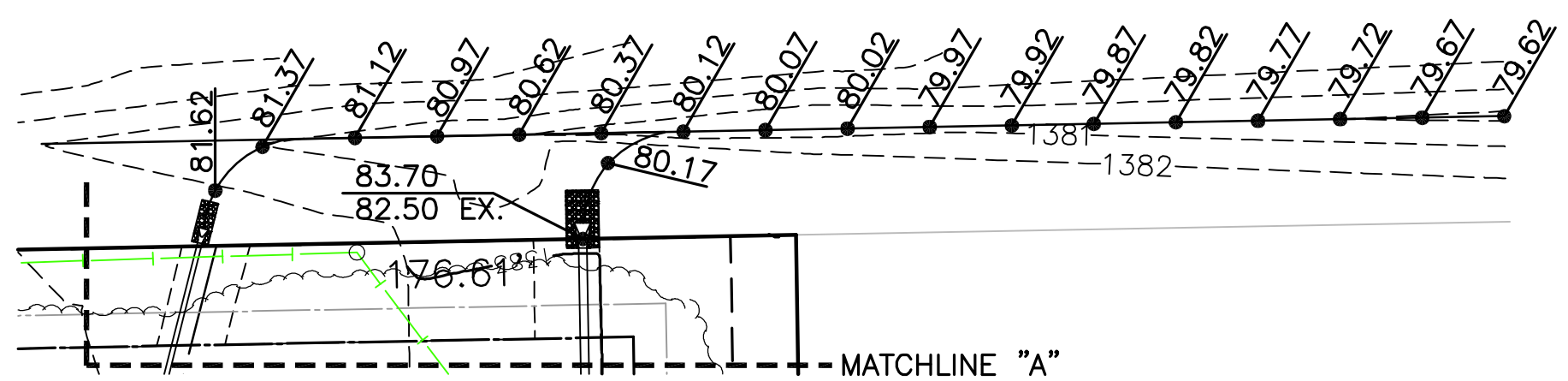
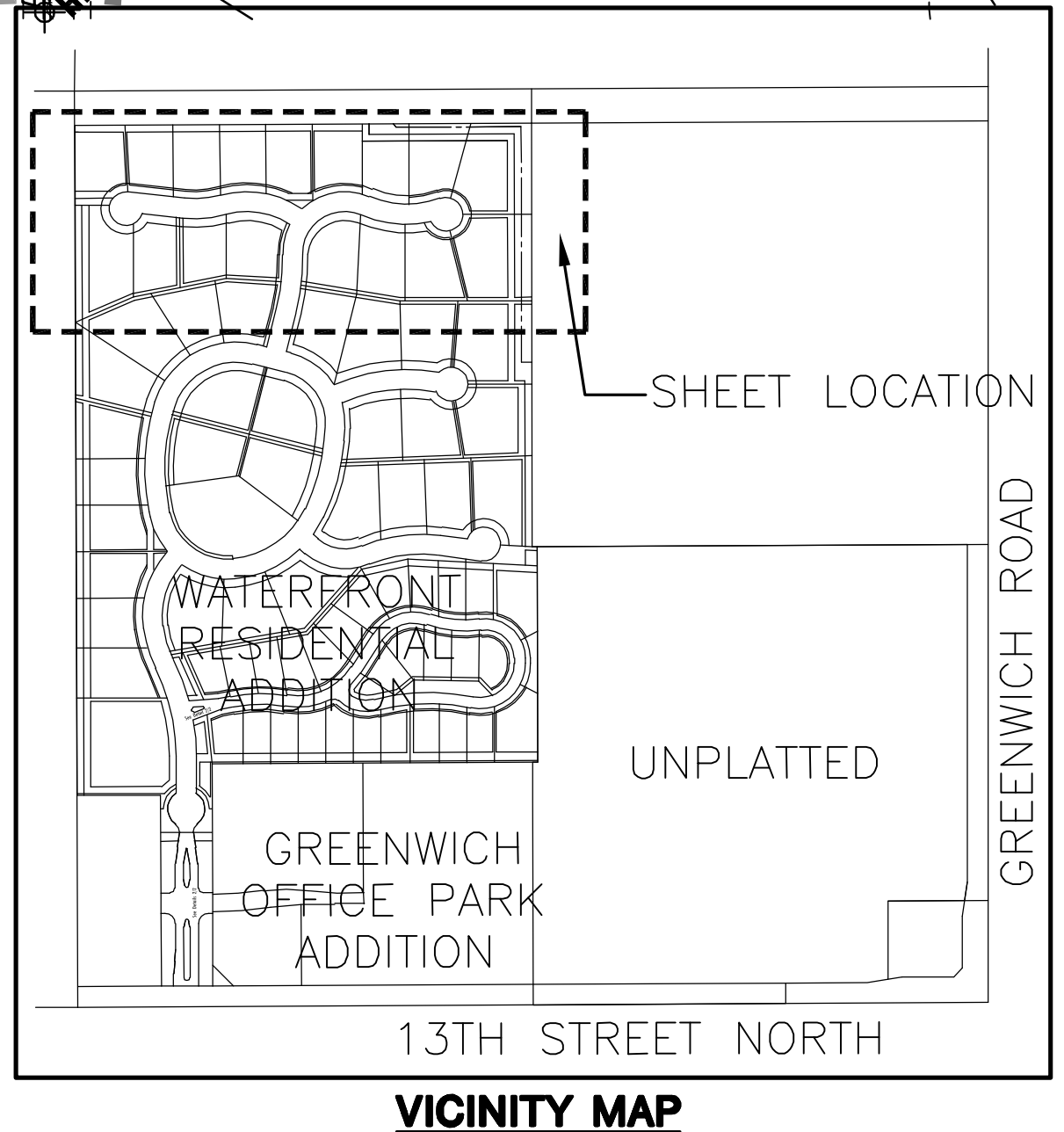
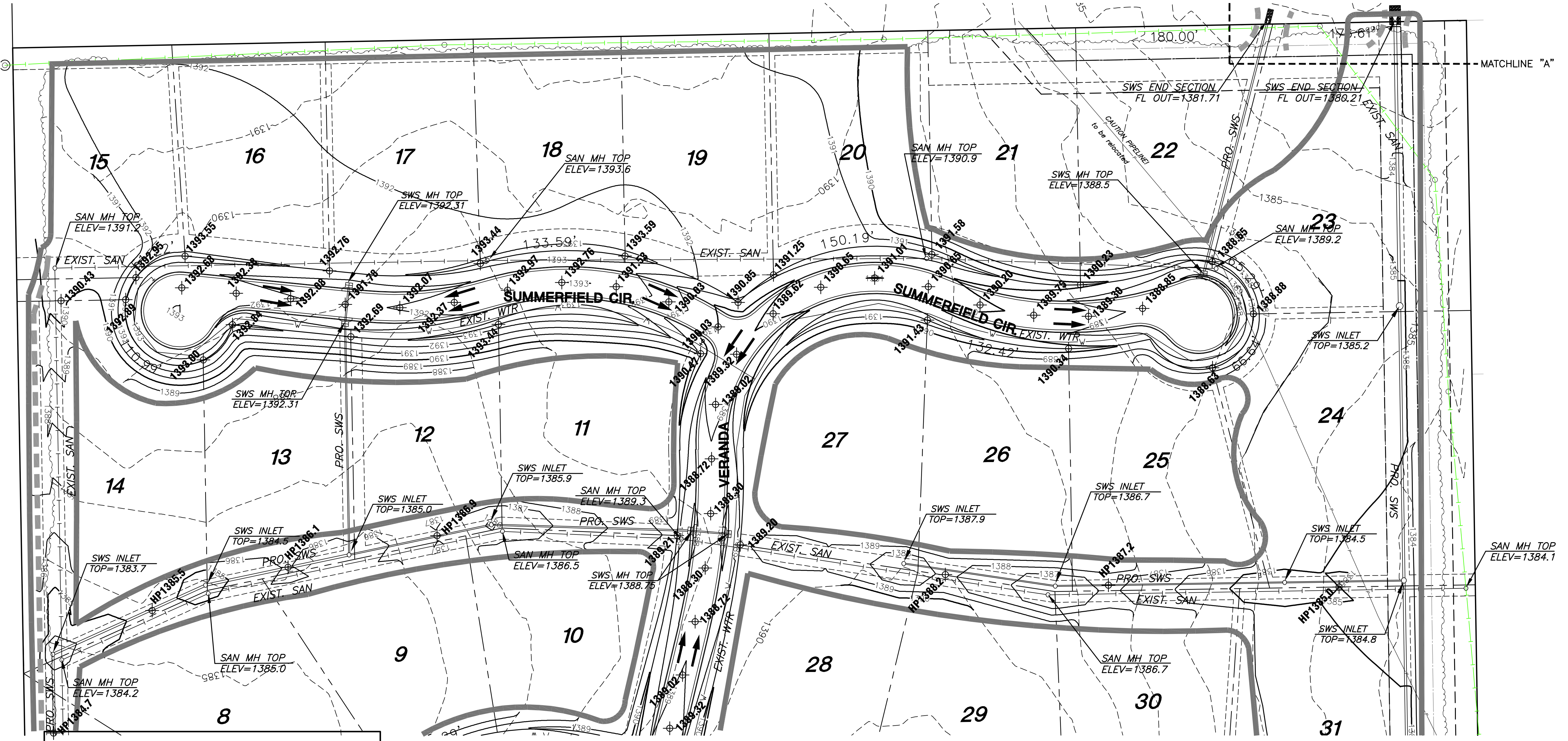
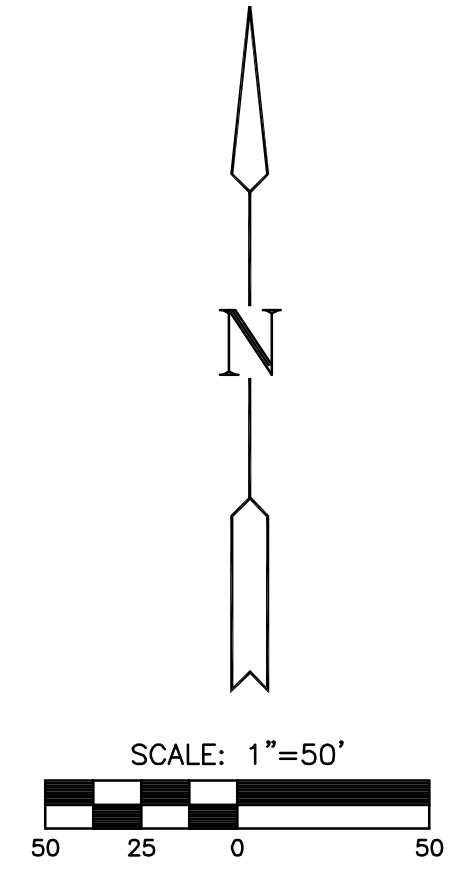


**STORM WATER SEWER PLANS FOR  
WATERFRONT RESIDENTIAL  
ADDITION**



**EXCAVATION AREA NOTES:**  
REMOVE TOPSOIL FROM EXCAVATION AREA AND STOCKPILE UNTIL EXCAVATION IS COMPLETE THEN REPLACE OVER DISTURBED AREA. COST SUBSIDIARY TO EARTHWORK.  
CONTRACTOR TO INSURE POSITIVE DRAINAGE OUT OF EXCAVATION AREA.



- LEGEND**
- PROPOSED TREE PROTECTION
  - PROPOSED STORM WATER SEWER
  - - - EXISTING WATER LINE
  - - - EXISTING SANITARY SEWER LINE
  - - -1359 - - EXISTING CONTOURS
  - - -1360 - - PROPOSED CONTOURS
  - LIMITS OF GRADING
  - NORMAL POOL
  - DRAINAGE ARROWS
  - ▨ TREE REMOVAL

**GRADING PLAN**  
SHEET TITLE  
468-84423  
PROJECT NUMBER

MLP  
DESIGN BY  
MLP  
DRAWN BY  
GJA  
CHECKED BY

ISSUED  
February 2008  
REVISED

SHEET NO.  
**25 of 34**

PLOTTED: Wednesday, February 20, 2008 @ 10:15AM

J:\CIVIL\062666\DWG\GRAD\RESIDENTIAL\062666\_03.DWG