

RCB MODIFICATION PLAN
WATERFRONT RESIDENTIAL ADDITION
WATERFRONT SIXTH ADDITION
DRAINAGE (HOTEL POND)

RCB MODIFICATION PLAN

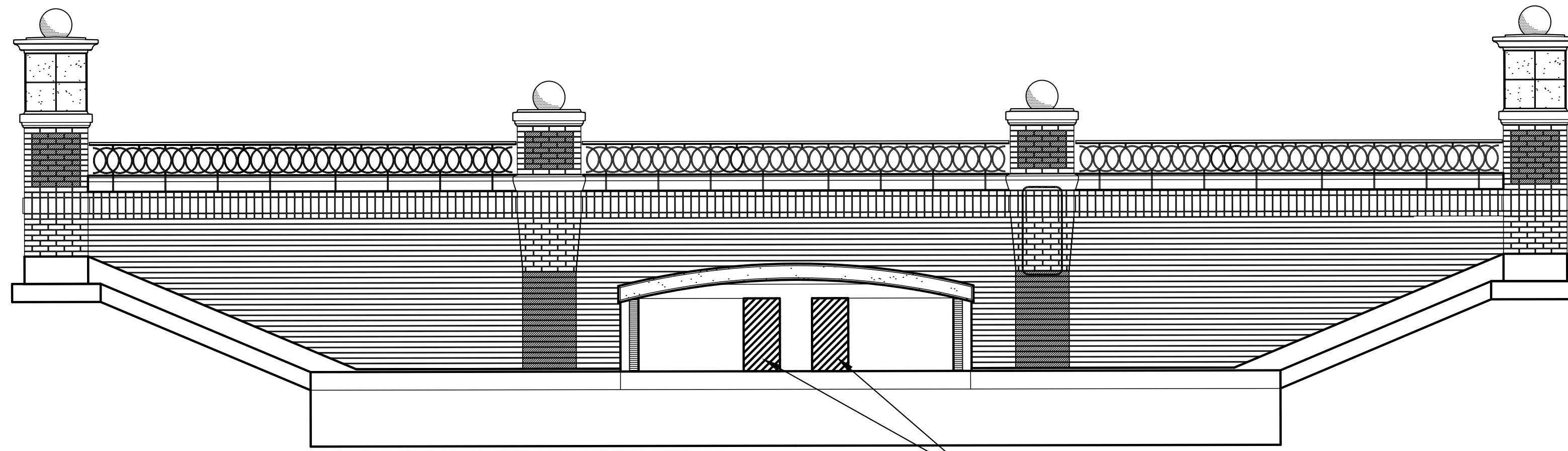
SHEET TITLE
06266
PROJECT NUMBER

DESIGN BY
JAG
DRAWN BY
JWC
CHECKED BY
GJA

ISSUED
February 08
REVISED

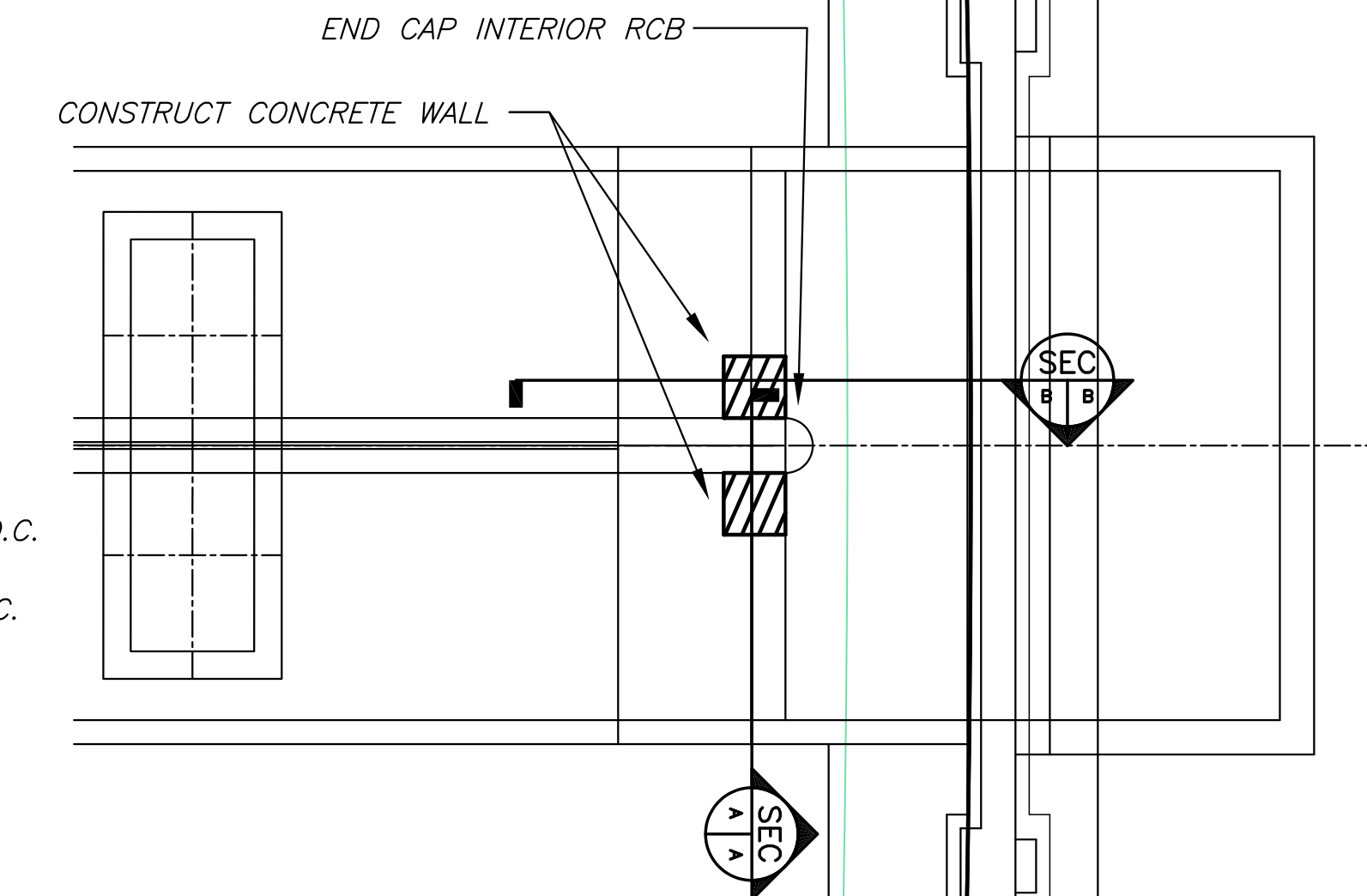
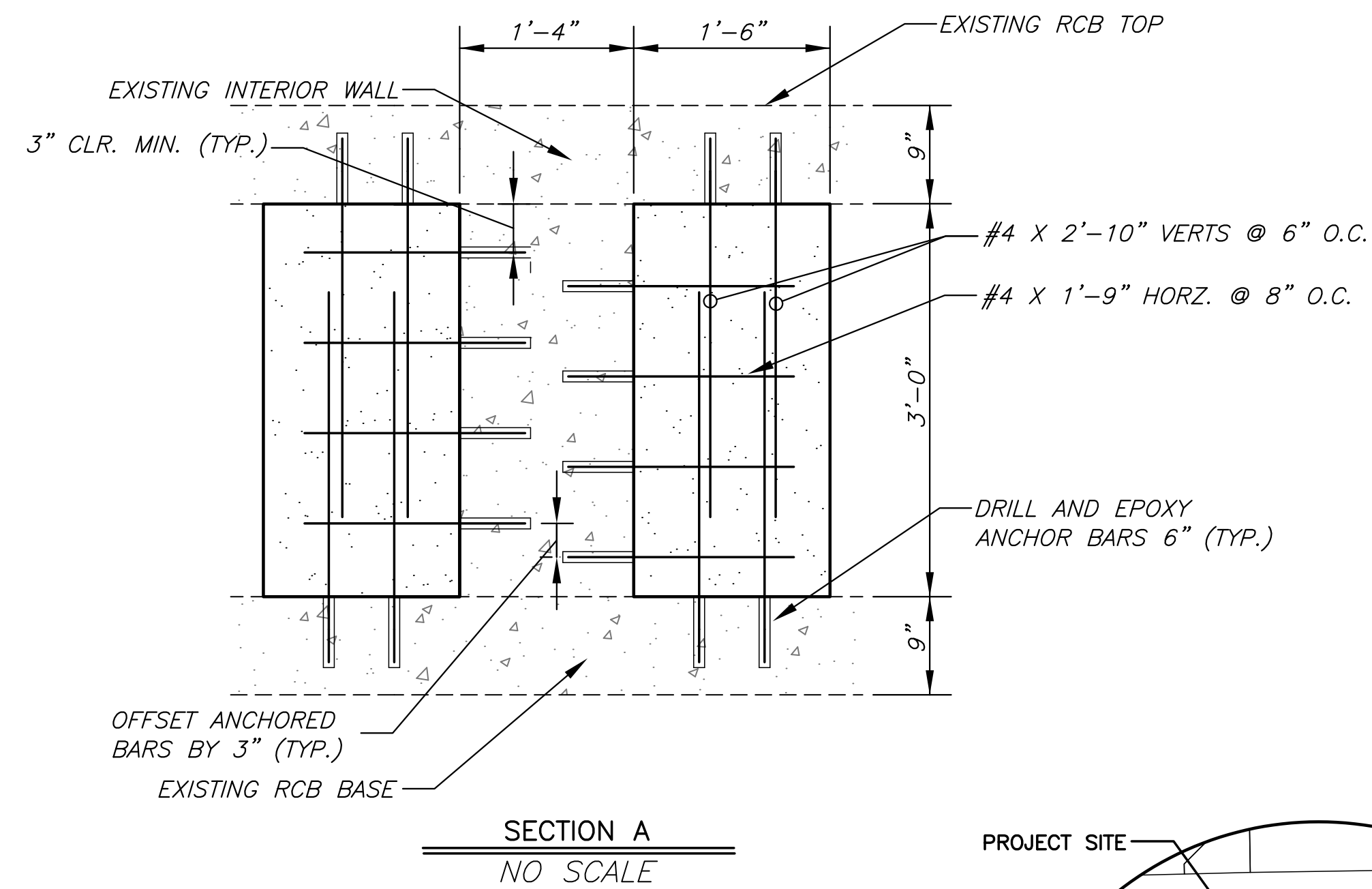
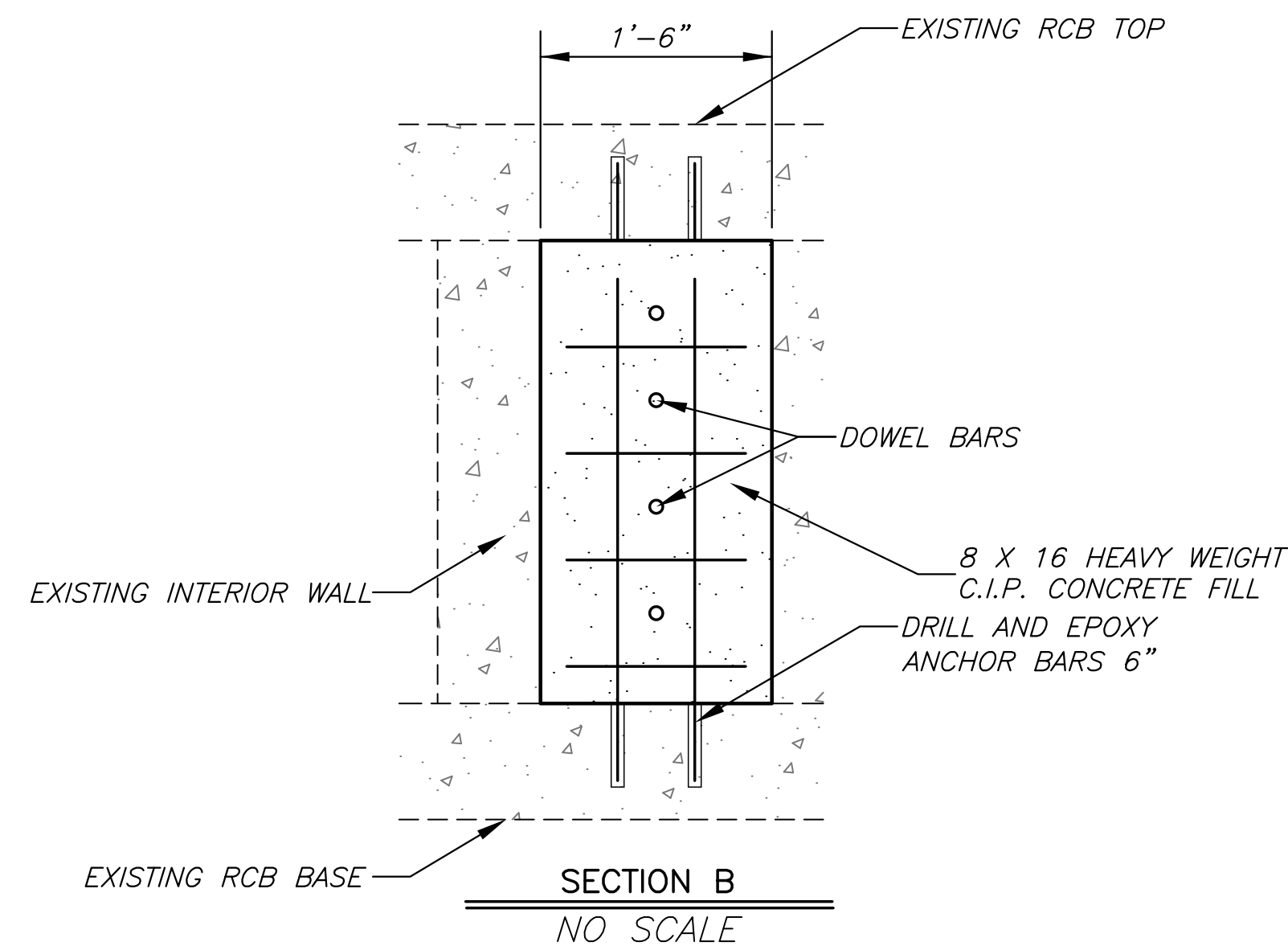
SHEET NO.
5 of 12

J:\CIVIL\06266\DWG\GRAD\6TH_ADD\DRNG-POND\06266_RCB.DWG

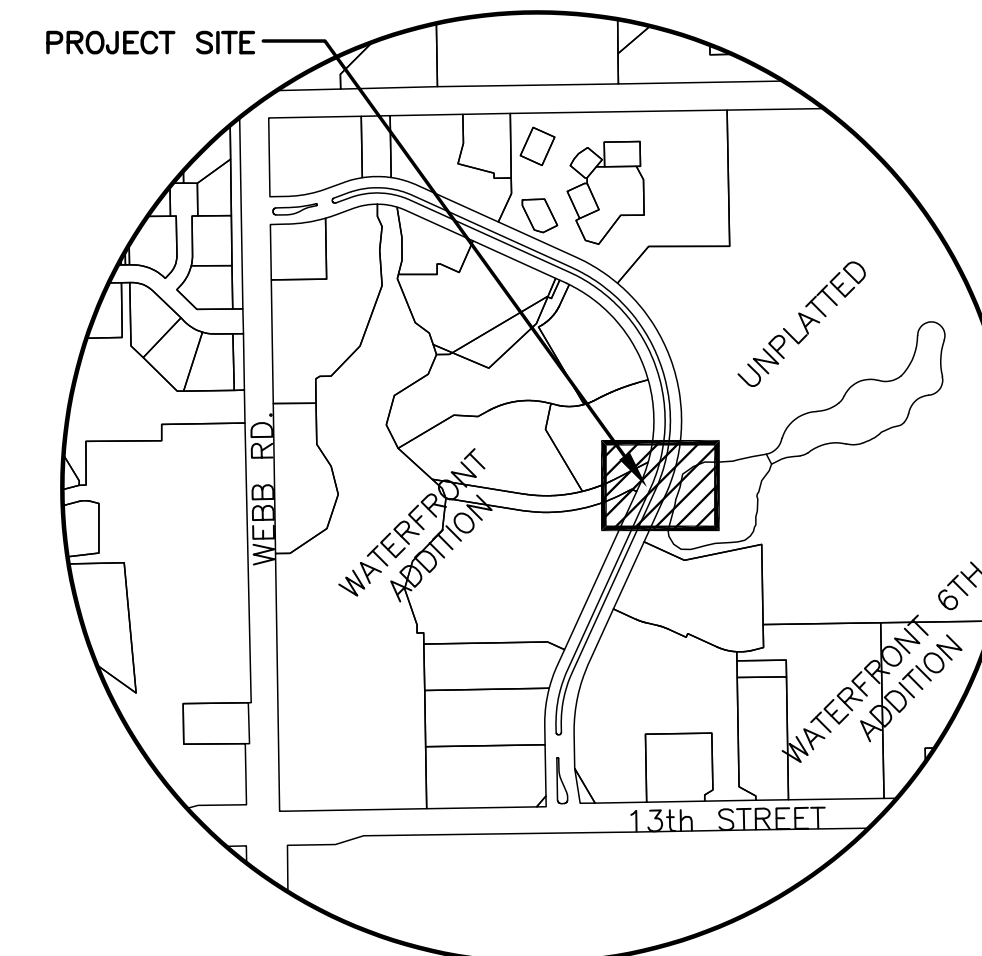


ELEVATION - UPSTREAM

SCALE 1/4"=1'-0"



PLAN
SCALE 1/4"=1'-0"



VICINITY MAP

GENERAL NOTES

LOADING: HS20-44 AASHTO Specifications, 1996 Edition.

UNIT STRESSES: Class AAA (AE) Concrete; $f'_c = 4,000$ p.s.i.

CONCRETE: Class AAA (AE) Concrete shall be used throughout.
Reinforcing Steel; $f_y = 60,000$ p.s.i.
Bevel all exposed edges with a 3/4" triangular moulding.

REINFORCING: All reinforcing shall conform to ASTM A615,
Grade 60. All dimensions relative to reinforcing steel shall
be to centerline of bar unless otherwise noted.

EXCAVATION: Excavation for culvert shall not be paid for directly
but shall be subsidiary to box construction.