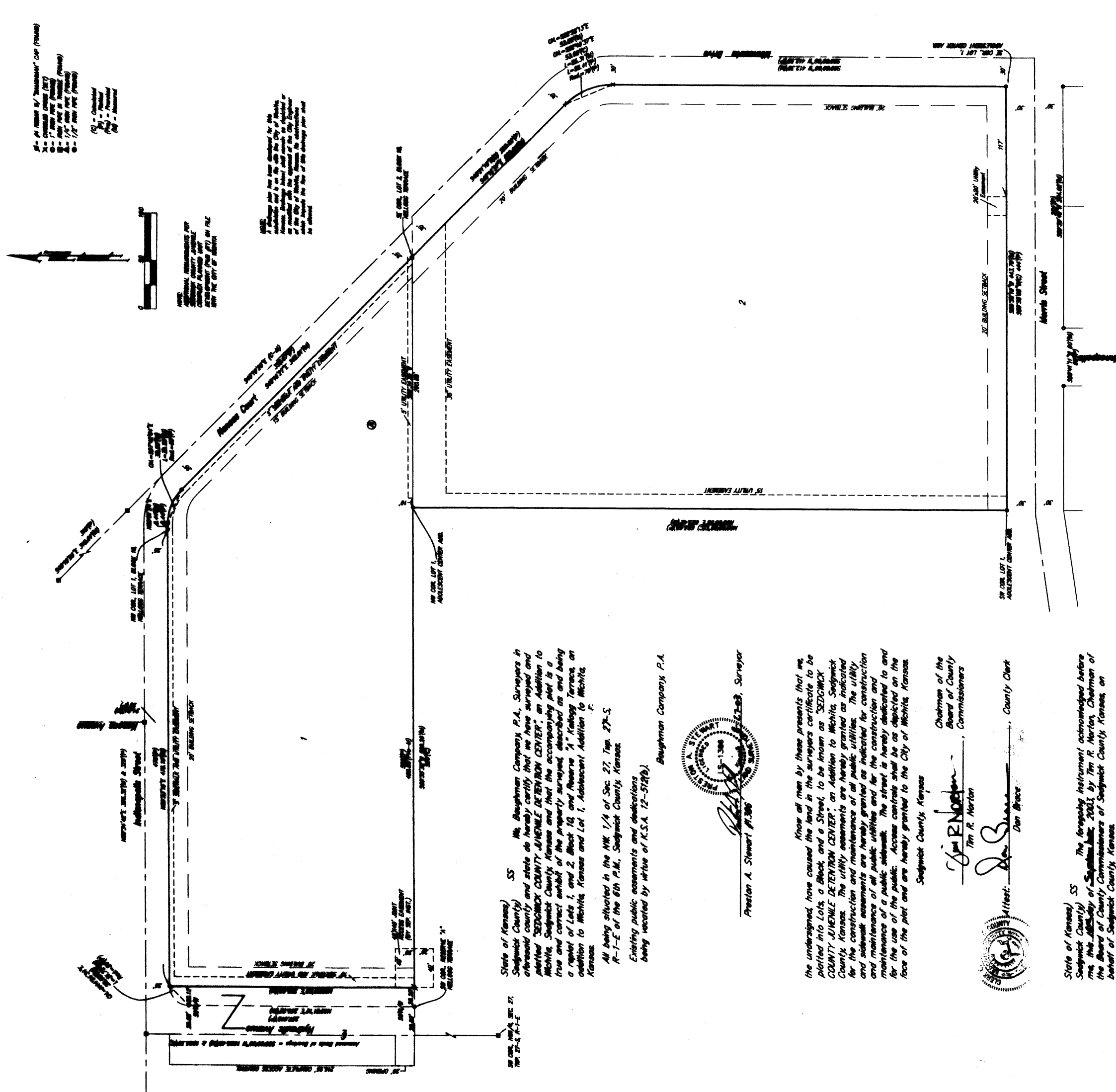


SEDGWICK COUNTY JUVENILE DETENTION CENTER
AN ADDITION TO WICHITA, SEDGWICK COUNTY, KANSAS

PC154-4



State of Kansas
 Sedgwick County, Kansas
 I, **James L. Armour**, P.E., County Engineer of Sedgwick County, Kansas, do hereby certify that the above and foregoing plat is a true and correct copy of the original plat as filed in my office on this 27th day of May, 2004, and that I am duly qualified to perform the duties of my office.

At my office in the City of Wichita, Kansas, this 27th day of May, 2004.
 James L. Armour, P.E., County Engineer

James L. Armour, P.E.
 County Engineer

The undersigned, being duly sworn, depose and say that the above and foregoing plat is a true and correct copy of the original plat as filed in my office on this 27th day of May, 2004, and that I am duly qualified to perform the duties of my office.

James L. Armour, P.E.
 County Engineer

State of Kansas
 Sedgwick County, Kansas
 I, **James L. Armour**, P.E., County Engineer of Sedgwick County, Kansas, do hereby certify that the above and foregoing plat is a true and correct copy of the original plat as filed in my office on this 27th day of May, 2004, and that I am duly qualified to perform the duties of my office.

At my office in the City of Wichita, Kansas, this 27th day of May, 2004.
 James L. Armour, P.E., County Engineer

James L. Armour, P.E.
 County Engineer

James L. Armour, P.E.
 County Engineer

James L. Armour, P.E.
 County Engineer

James L. Armour, P.E.
 County Engineer

2275560

PC 154 - 4

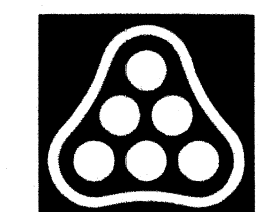
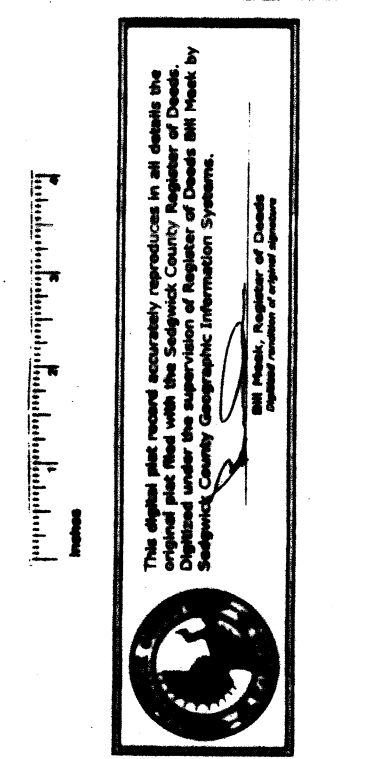
State of Kansas
 Sedgwick County, Kansas
 I, **James L. Armour**, P.E., County Engineer of Sedgwick County, Kansas, do hereby certify that the above and foregoing plat is a true and correct copy of the original plat as filed in my office on this 27th day of May, 2004, and that I am duly qualified to perform the duties of my office.

At my office in the City of Wichita, Kansas, this 27th day of May, 2004.
 James L. Armour, P.E., County Engineer

James L. Armour, P.E.
 County Engineer

James L. Armour, P.E.
 County Engineer

James L. Armour, P.E.
 County Engineer



No.	Revision	By	Date

CITY OF WICHITA, KANSAS
 JAMES L. ARMOUR, P.E. - CITY ENGINEER
 SEDGWICK COUNTY JUVENILE COURT COMPLEX FACILITY
PLAT
 CITY OF WICHITA PRIVATE PROJECT NO. PPS (607861)
Professional Engineering Consultants, P.A.
 303 S. TOPEKA • WICHITA, KANSAS 67202
 316-262-2691 • FAX 316-262-3003

Designed by	Job No. 35-02116-001	Sh. 10 of 14
Drawn by	Date May 2004	