

PLAN	CHECKED	CHECKED
BY		
DATE		

PROFILE	CHECKED	CHECKED
BY		
DATE		

Save 02-06-2006 1:32:04 PM by JDS
 Plot Scale 1:20 02-06-2006 1:32:46 PM by JDS
 02-12-2002 02:16:00 JDS SWS (CY402) SWSPP01

N-4,076.2464, E-10,569.8666
 Sta. 8+23.9 SWS Line No. 1
 Const. Std. Manhole over
 exist. 24" pipe. Remove top
 half of 24" pipe through
 Manhole. Shape invert to
 provide smooth flow.
 Dia.=5'-0"
 Top Elev.=104.0
 Connect to Existing 24" RCP
 Install 176.1 L.F. 18" RCP (N)
 See Sheet No. 8 (CV408)

Install 7 L.F.
 Excavatable Flowable
 Fill to Elev. 101.96

CAUTION !!!
 Buried Electric
 Contractor to expose and verify location prior
 to beginning construction. The contractor shall
 report his findings to the engineer so that any
 necessary plan modifications may be made. Any
 additional labor or materials necessary to
 complete the SWS shall be considered subsidiary
 to the project.

CAUTION !!!
 4" PVC Water
 Service Line

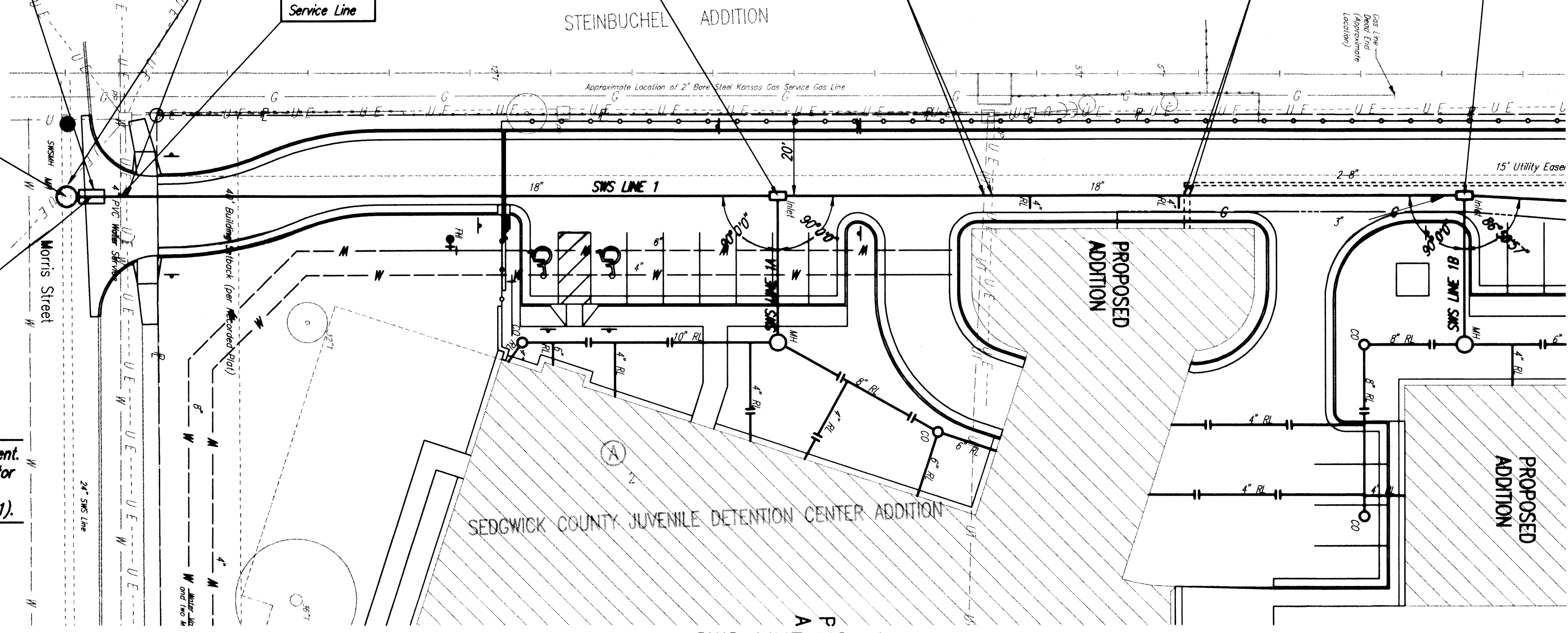
N-4,252.3298, E-10,569.9161
 Sta. 10+00.0 SWS Line No. 1=
 Sta. 25+00.0 SWS Line No. 1A
 Const. Area Inlet
 (2'x 4')
 Top Elev.=102.5
 Install 170.0 L.F. 18" RCP (N)
 Install 36.6 L.F. 12" RCP (E)
 See Sheet No. 6 (CV406)

CAUTION !!!
 Buried Telephone
 Buried Electric
 Contractor to expose and verify location prior
 to beginning construction. The contractor shall
 report his findings to the engineer so that any
 necessary plan modifications may be made. Any
 additional labor or materials necessary to
 complete the SWS shall be considered subsidiary
 to the project.

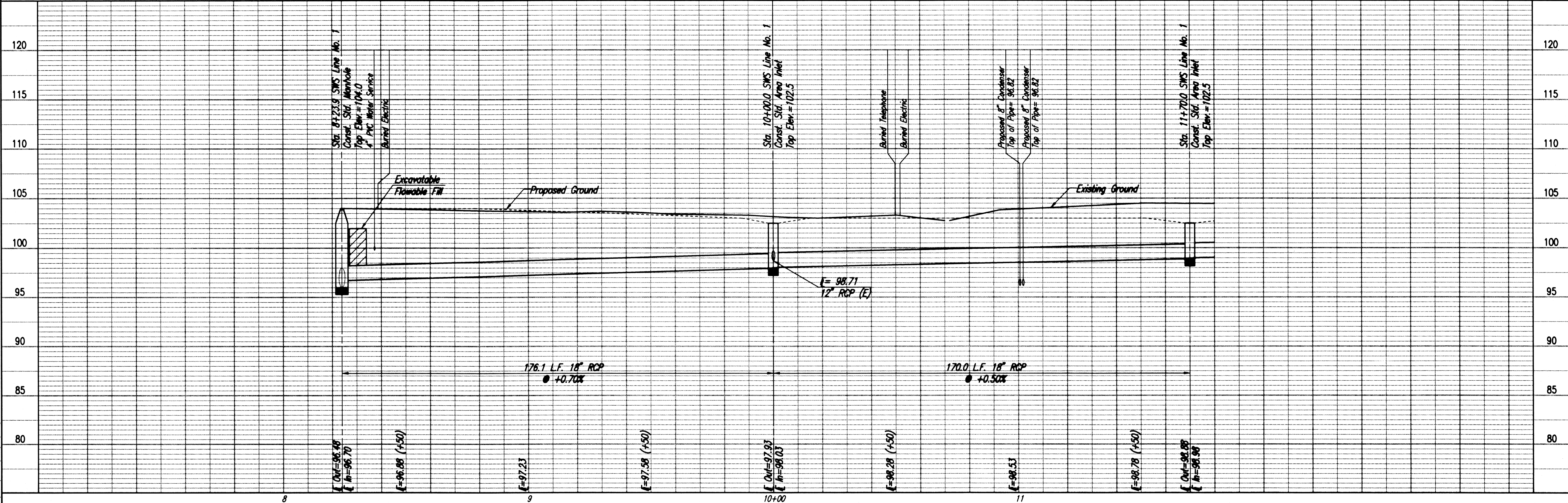
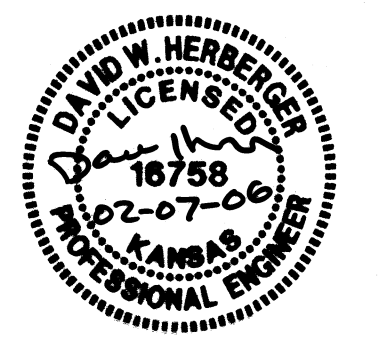
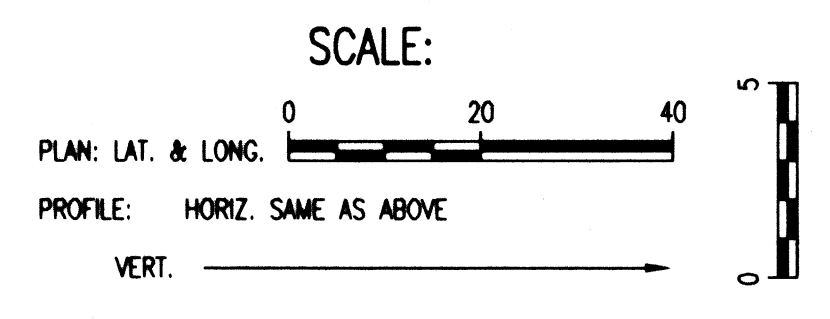
CAUTION !!!
 2 - Prop. 8" Condenser
 Waterlines (by others)

N-4,422.3298, E-10,569.9639
 Sta. 11+70.0 SWS Line No. 1
 Sta. 30+00.0 SWS Line No. 1B
 Const. Area Inlet
 (2'x 4')
 Top Elev.=102.5
 Install 252.4 L.F. 18" RCP (N)
 Install 37.2 L.F. 12" RCP (E)
 See Sheet No. 6 (CV406)

Remove 5 L.F. Asphalt Pavement.
 Coordinate with City's Contractor
 for Pavement Repair. See
 General Notes, Sheet 1 (CV401).



SWS LINE NO. 1



Professional Engineering Consultants, P.A.
 303 S. TOPEKA - WICHITA, KANSAS 67202
 316-262-2691 • FAX 316-262-3003

Professional Engineer
 DAVID W. HERBERICH
 License No. 16758
 State of Kansas

CITY OF WICHITA, KANSAS
 JAMES L. ARMOUR, P.E. - CITY ENGINEER
 SEDGWICK COUNTY JUVENILE COURT COMPLEX

SWS LINE NO. 1

City of Wichita, Private Project No. 1630 PPS (602861)

Job No. 35-02116-001-259
 Date August 2003

Designed By DWH
 Drawn By DCM

Sheet 2 of 14