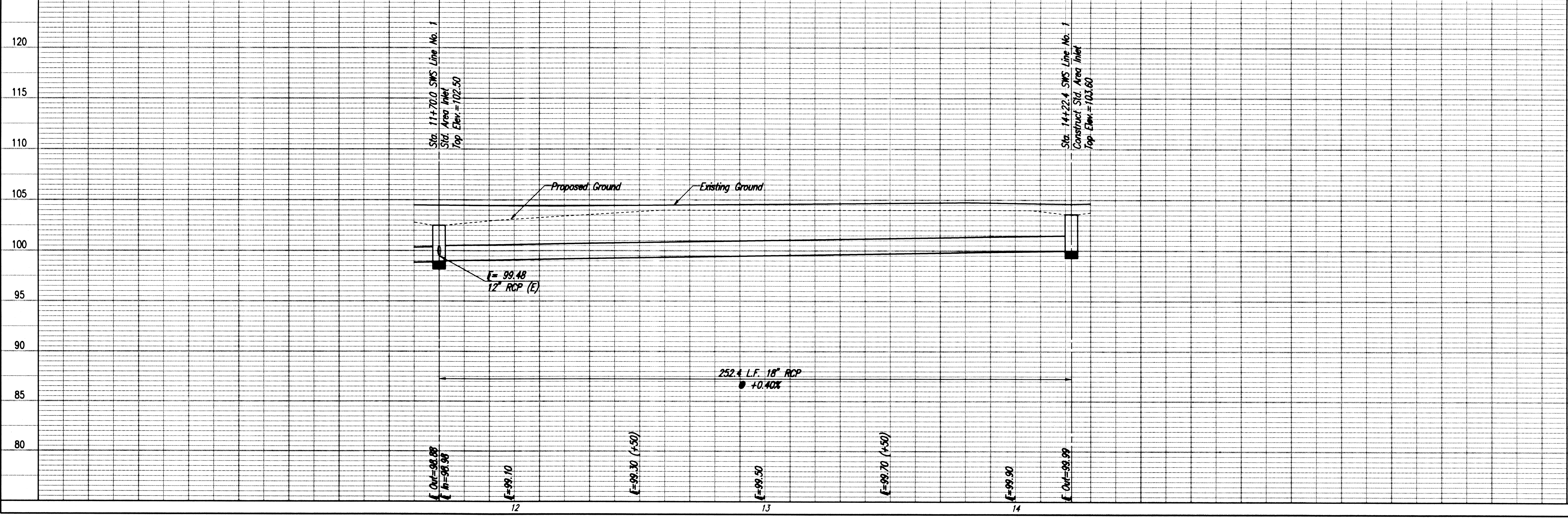
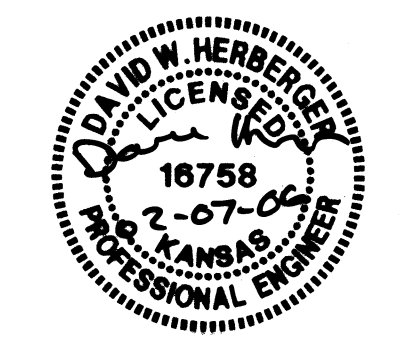
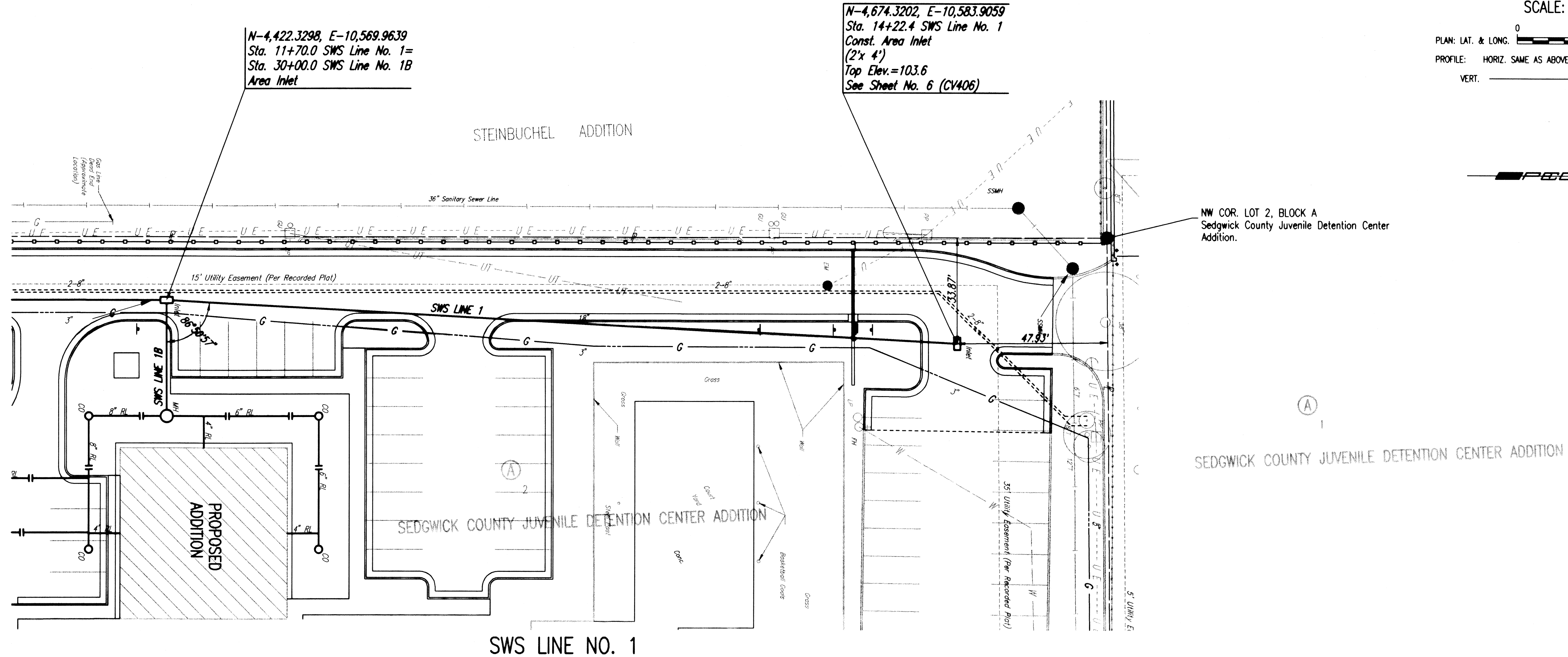


PLAN	CHECKED	DATE
	CHECKED	

PROFILE	CHECKED	DATE
	CHECKED	

Saved: 02-02-2006 4:42:16 PM by JDS
 Plot Scale: 1/20 02-04-2006 7:44:34 AM by JDS
 G:\2002\02116\001\DWG\SWS CV403 SWSP02



Professional Engineering Consultants, P.A.
 303 S. TOPEKA - WICHITA, KANSAS 67202
 316-262-2891 • FAX 316-262-3003

City of Wichita, Kansas
 James L. Armour, P.E. - City Engineer
 Sedgwick County Juvenile Court Complex

SWS LINE NO. 1

City of Wichita Private Project No. 1630 PPS (602861)

Designed By: DNH
 Drawn By: DCM

Job No. 35-02116-001-259
 Date August 2003

Sheet 3 of 14