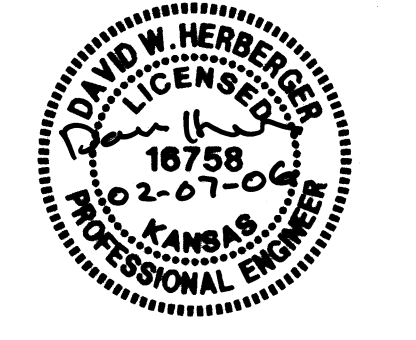
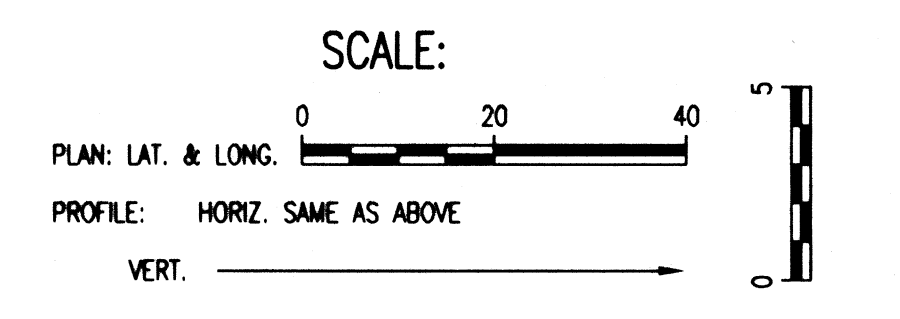
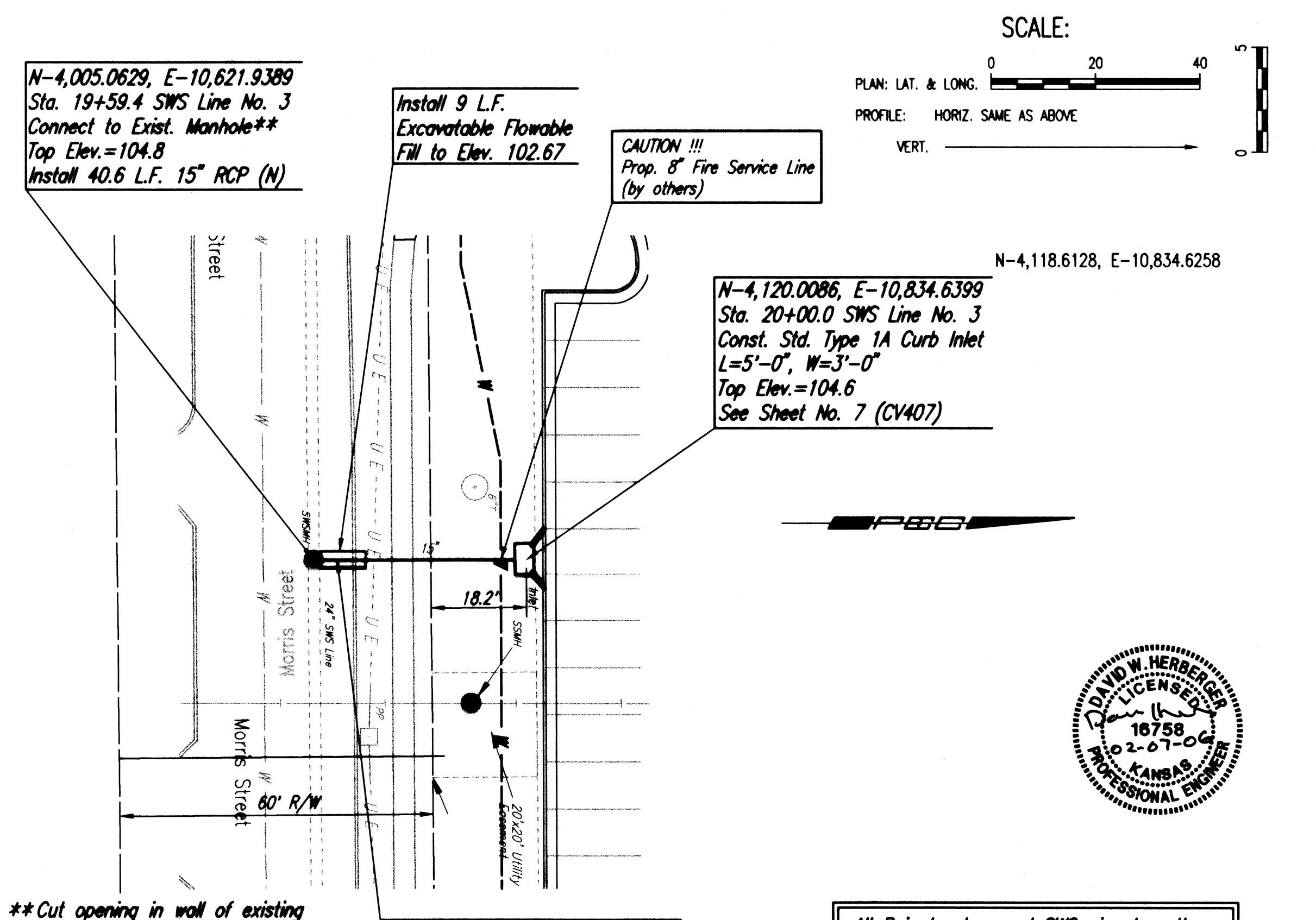
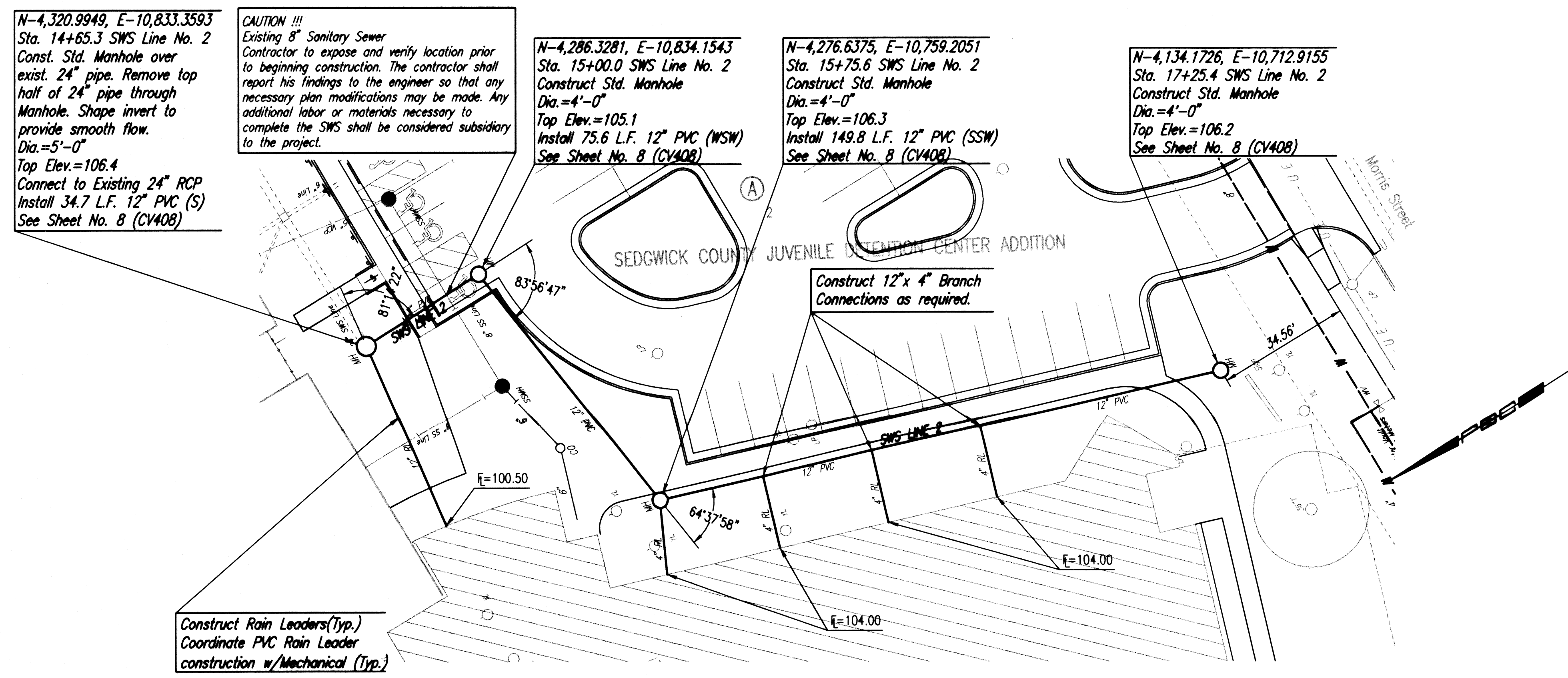


PLAN
 CHECKED
 BY: DATE

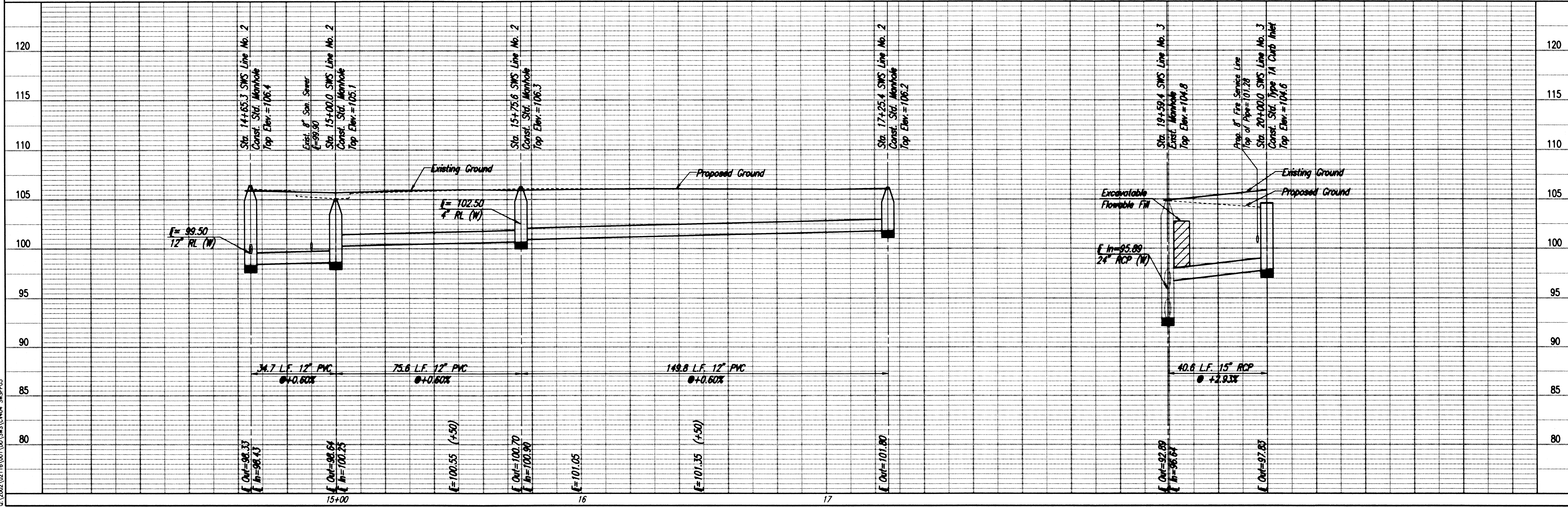
PROFILE
 CHECKED
 BY: DATE

Save: 02-06-2006 4:24:50 PM by JDS
 On: 3/26/06 1:20:02 PM by JDS
 On: 3/26/06 1:20:02 PM by JDS



SWS LINE NO. 2

SWS LINE NO. 3



CITY OF WICHITA, KANSAS
 JAMES L. AMOUR, P.E., CITY ENGINEER
 SEDGWICK COUNTY JUVENILE COURT COMPLEX

SWS LINE NO. 2 & 3

CITY OF WICHITA PRIVATE PROJECT NO. 1630, PPS (607861)

Professional Engineering Consultants, P.A.
 303 S. TOPKA • WICHITA, KANSAS 67202
 316-262-2691 • FAX 316-262-3003

Designed by: DWH
 Drawn by: DCM
 Job No.: 35-02116-001-259
 Date: August 2003

Sheet 4 of 14