

10' Util. Esmt.
(Film 1170, Pg. 0622)

15' Sanitary Sewer Esmt.
(By Sep. Inst.)

20' Util. Esmt.
(Film 1170, Pg. 0620)

CONSTRUCTION ENTRANCE INFORMATION:
Contractor Shall Construct and Maintain Approved Entrances as Discussed in the Storm Water Pollution Prevention Plan Guidelines. Entrance Shall be a Minimum of 30' Wide by 85' in Length With 4- 6" Dia. Stone at a Depth of 8".

- = #4 Baughman Rebar Found
- = #6 Rebar Found
- = 1/2" Iron Pipe Found
- △ = #6 Armstrong Rebar Found

NOTES:

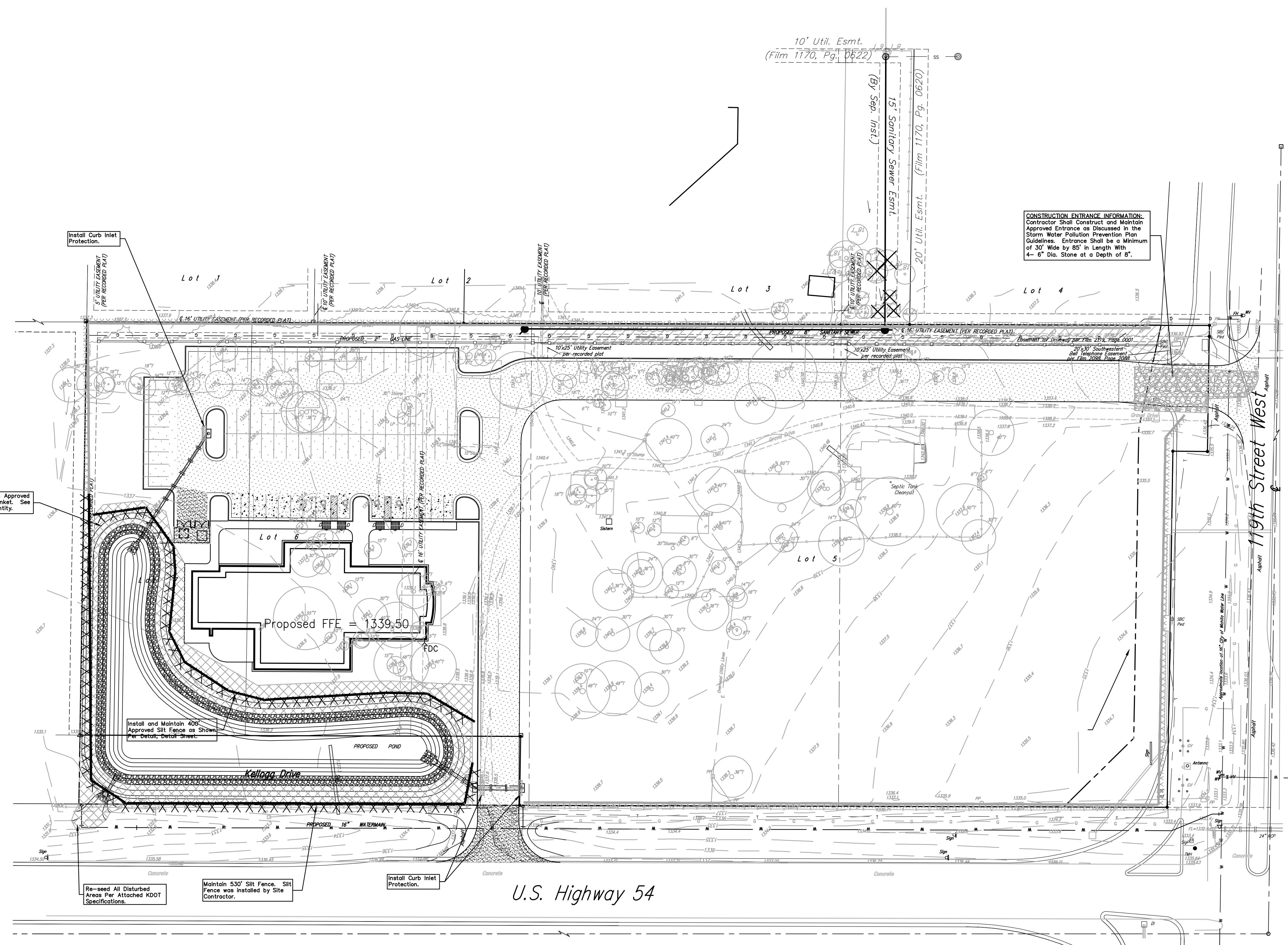
1. This Plan is Not To Be Used As A Comprehensive Grading Plan. All Spot Elevations Are Proposed & Subject To Change.
2. Each Lot Area Disturbed By Construction Shall Be the Responsibility of Each Individual Homeowner. Owner Responsible to Follow All SWPP Plans & Guidelines For The Area.
3. Erosion Control Matting and/or Other Approved Bank Stabilization w/ Seeding & Fertilizer Shall Be Installed at Engineered Channels or Sedimentation Basins Where the Designed Sideslopes Will be Greater Than 6:1. All Other Disturbed Areas Shall be Seeded, Fertilized, & Mulched As Follows:

SEED ---
150 lbs. per acre of K-31 Fescue.
200 lbs. per acre of Annual Rye.
50 lbs. per acre of Brome
FERTILIZER ---
12-24-12 Ratio - 350 lbs./ac.
MULCH ---
2 Tons of Prairie Hay or Bromegrass Hay per Acre "Patted" w/Forks Or Punched Into Soil To Reduce Loss Due To Wind.
4. Install 8' Wide Culex/Excelsior Blanket, or Approved Equal, on Prepared Surface Back of Curb. Edge of Blanket Will Be At Back of Curb. Install Per Manufacturers Recommendation, Including Staples.
5. The Silt Fence Install Around the Ponds May be Substituted with a 40' Wide Strip of Mat-Blend 50/50 Plus Wood Fiber Mulch. The Seeding Rate Shall be the Same As Note 3. Contact Mat, Inc. For More Information on Mat-Blend Plus at 1-888-477-3028. Mat-Blend Plus May be Substituted For Another Comparable Hydro-Mulch Product.
6. All Seeding Shall be Drilled During Spring or Fall Planting Seasons. Fall Seeding Shall be September 1 thru Mid October. Spring Seeding Shall be From March 15 thru Mid May.

EROSION CONTROL PLAN LEGEND
(Installation Details Found in the SWP2 Plan)

- LIGHT STONE RIP-RAP
- DROP INLET PROTECTION
- CURB INLET PROTECTION
- STRAW BALE BARRIERS
- SILT FENCING
- EARTH DIKES
- CURB INLET PROTECTION

NO SCALE



Install Curb Inlet Protection.

Install and Maintain Approved Erosion Control Blanket. See Pond Plan for Quantity.

Install and Maintain 400' Approved Silt Fence as Shown Per Detail, Detail Sheet.

Re-seed All Disturbed Areas Per Attached KDOT Specifications.

Maintain 530' Silt Fence. Silt Fence was installed by Site Contractor.

Install Curb Inlet Protection.

U.S. Highway 54

Baughman Wheatridge Addition
Erosion Control Plan
Storm Water Sewer Improvements

Baughman Company, P.A. 315 Bill St. Wichita, KS 67211 P 3162637271 F 3162630149
ENGINEERING | SURVEYING | PLANNING | LANDSCAPE ARCHITECTURE

PROJECT NUMBER 1846 PPS	DESIGN MWS	DRAWN MWS
REVISIONS:	APPROVED	DATE 01/08
	SCALE Noted	
	SHEET	6 OF 12

E:\eng\Wheatridge Addition\Citizenship plan.dwg 08-01-E024