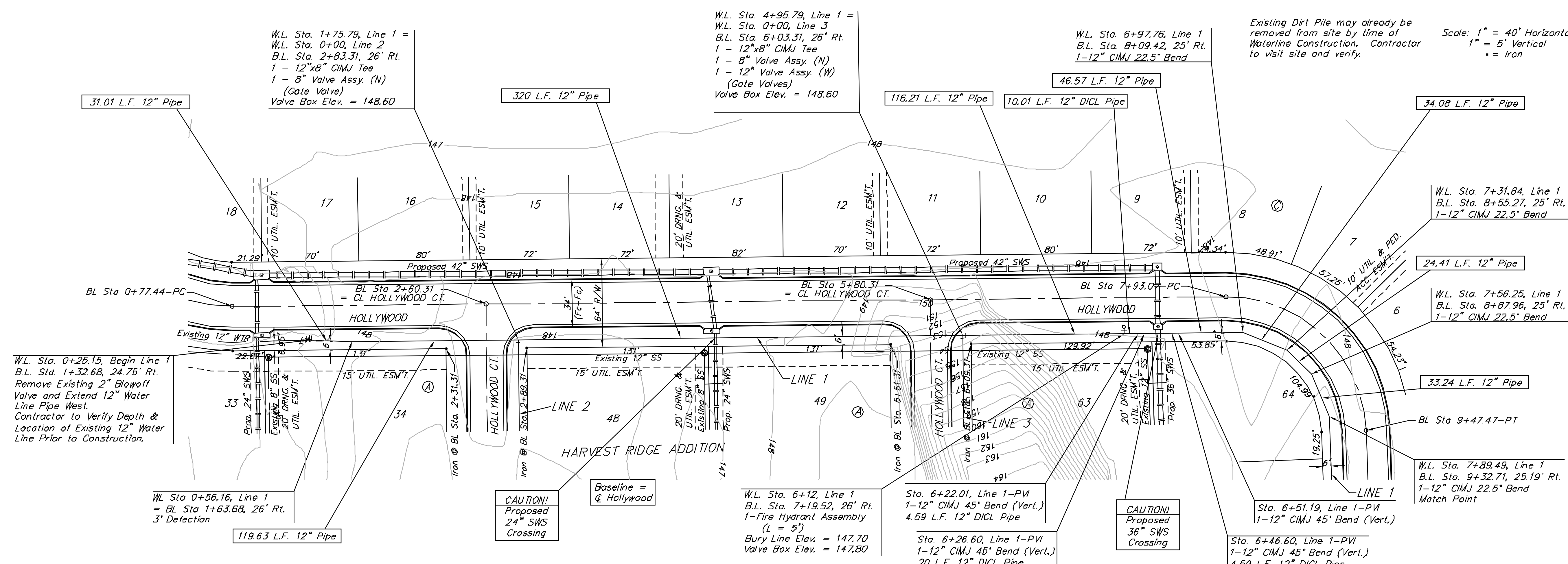


Benchmarks

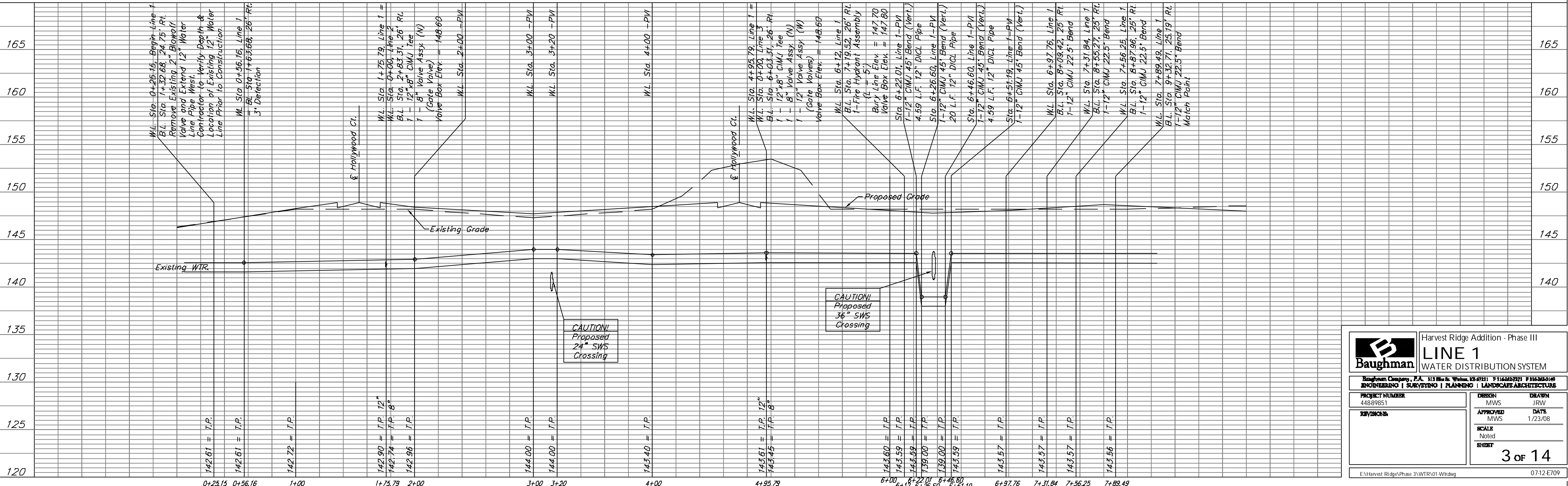
BM #1: "□" Cut in Top of Curb at Northwest Corner of Parking Lot, Lot 1, Block A, St. Peter the Apostle Catholic Church 2nd Addition.
Elev. = 150.34 (City Datum)

BM #2: "□" Cut in Q of Curb Inlet Top Adjacent to Northeast Corner of Lot 17, Block C, Harvest Ridge Addition.
Elev. = 145.89 (City Datum)

BM #3: "+" Cut in E of Curb Adjacent to Southwest Corner of Tract "H" Block A, Harvest Ridge Addition.
Elev. = 148.67 (City Datum)



Existing Dirt Pile may already be removed from site by time of Waterline Construction. Contractor to visit site and verify.
Scale: 1" = 40' Horizontal
1" = 5' Vertical
• = Iron



Baughman Engineering, P.A. 513 Main St., Wethersville, MO 64781 P 314-563-7271 F 314-563-0149
ENGINEERING | SURVEYING | PLANNING | LANDSCAPE ARCHITECTURE

PROJECT NUMBER: 44889851
DESIGN: MWS
APPROVED: MWS
SCALE: Noted
SHEET: 3 of 14

Harvest Ridge Addition - Phase III
LINE 1
WATER DISTRIBUTION SYSTEM

E:\Harvest Ridge\Phase 3\WTR\01-WDrawg 07/12/09