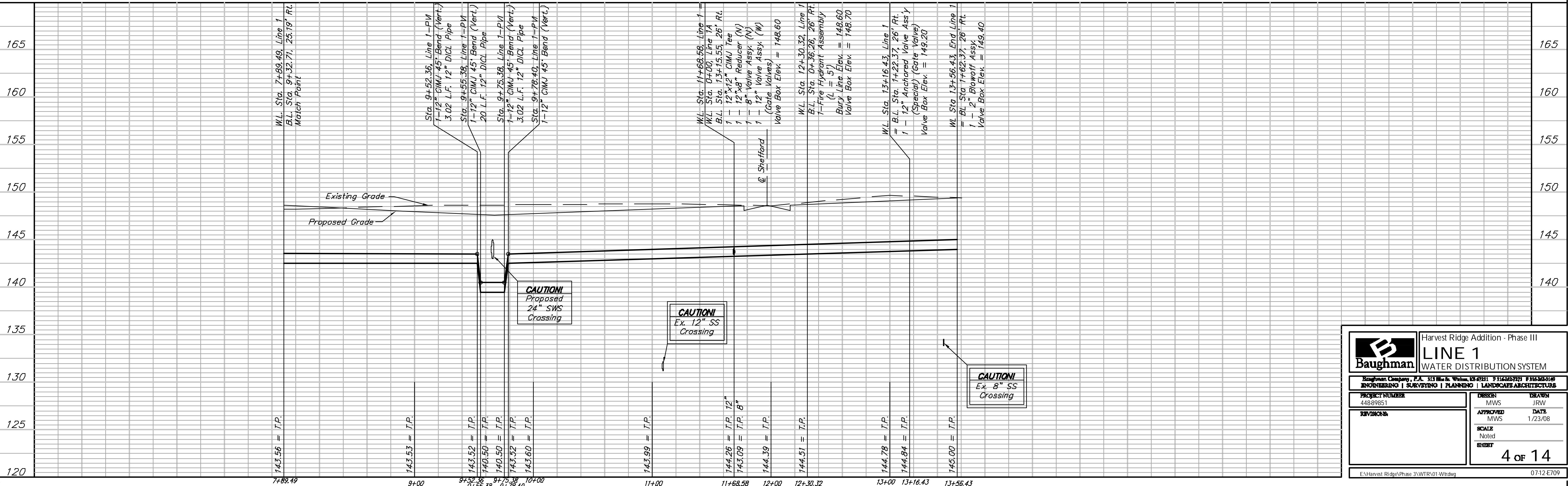
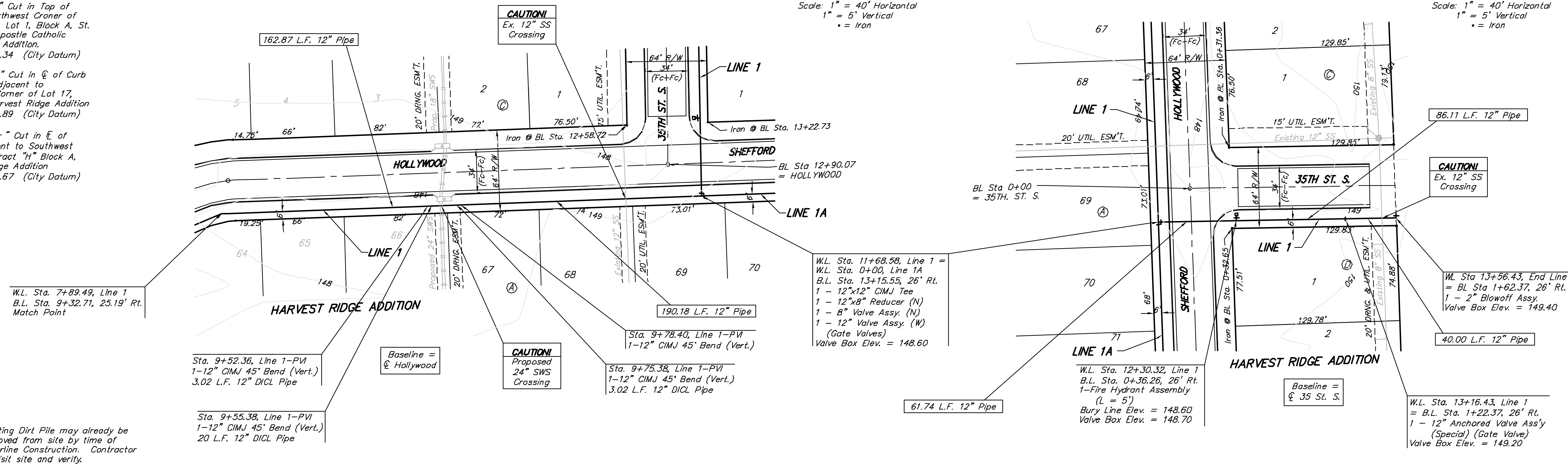
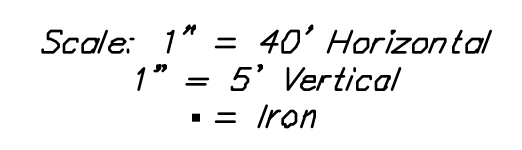
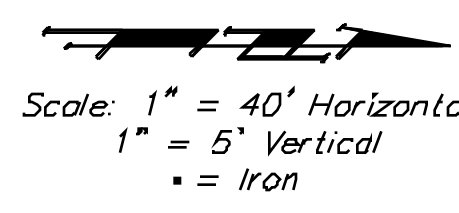


Benchmarks

BM #1: "□" Cut in Top of Curb at Northwest Corner of Parking Lot, Lot 1, Block A, St. Peter the Apostle Catholic Church 2nd Addition. Elev. = 150.34 (City Datum)

BM #2: "□" Cut in @ of Curb Inlet Top Adjacent to Northeast Corner of Lot 17, Block C, Harvest Ridge Addition. Elev. = 145.89 (City Datum)

BM #3: "+" Cut in E of Curb Adjacent to Southwest Corner of Tract "H" Block A, Harvest Ridge Addition. Elev. = 148.67 (City Datum)



Baughman Engineering, P.A. 313 Main St., Woburn, MA 02158
 ENGINEERING | SURVEYING | PLANNING | LANDSCAPE ARCHITECTURE

Harvest Ridge Addition - Phase III
LINE 1
 WATER DISTRIBUTION SYSTEM

PROJECT NUMBER 44889851	DESIGN MWS	DRAWN JRW
REVISIONS	APPROVED MWS	DATE 1/23/08
SCALE Noted		4 of 14

E:\Harvest Ridge\Phase 3\WTR01-Wr.dwg 07:12:0709