

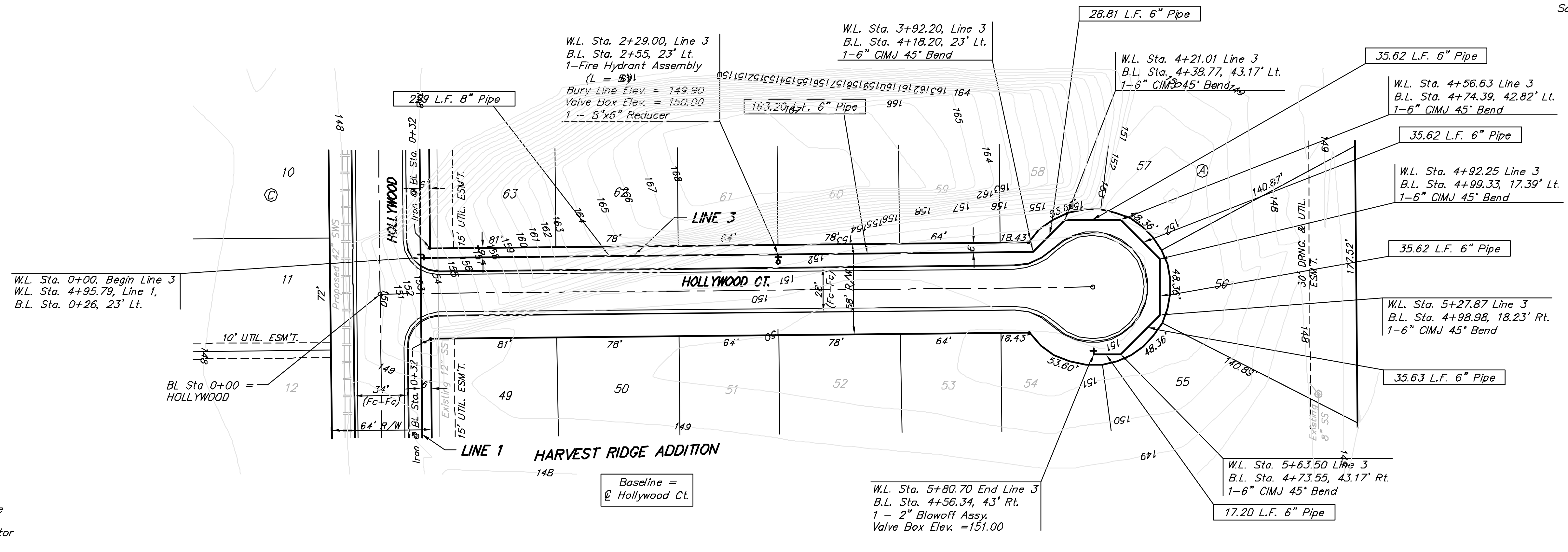
Benchmarks

BM #1: "□" Cut in Top of Curb at Northwest Corner of Parking Lot, Lot 1, Block A, St. Peter the Apostle Catholic Church 2nd Addition.
Elev. = 150.34 (City Datum)

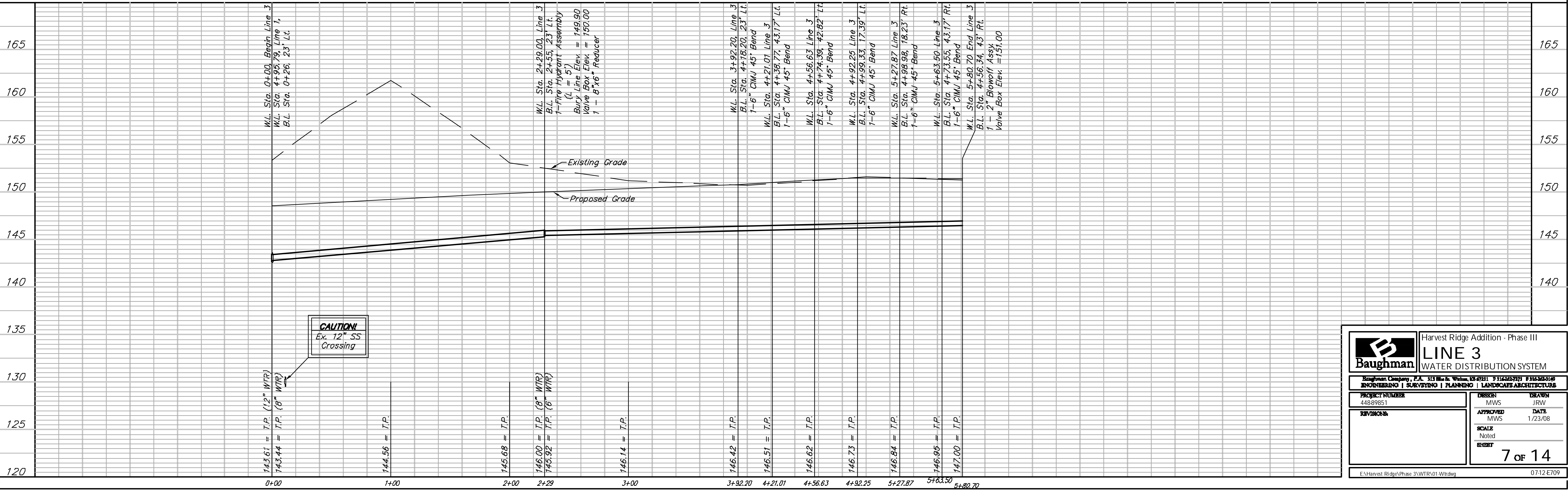
BM #2: "□" Cut in @ of Curb Inlet Top Adjacent to Northeast Corner of Lot 17, Block C, Harvest Ridge Addition.
Elev. = 145.89 (City Datum)

BM #3: "+" Cut in E of Curb Adjacent to Southwest Corner of Tract "H" Block A, Harvest Ridge Addition.
Elev. = 148.67 (City Datum)

Scale: 1" = 40' Horizontal
1" = 5' Vertical
• = Iron



Existing Dirt Pile may already be removed from site by time of Waterline Construction. Contractor to visit site and verify.



		Harvest Ridge Addition - Phase III	
		LINE 3	
ENGINEERING SURVEYING PLANNING LANDSCAPE ARCHITECTURE		WATER DISTRIBUTION SYSTEM	
<small>Baughman Company, P.A. 313 Main St., Woburn, MA 02158 P 978.234.7771 F 978.234.0149</small>			
PROJECT NUMBER 44889851	DESIGN MWS	DRAWN JRW	DATE 1/23/08
REVISIONS	APPROVED MWS	SCALE Noted	DATE 1/23/08
			7 of 14
E:\Harvest Ridge\Phase 3\WTR\01-Wtr.dwg			07-12-E709