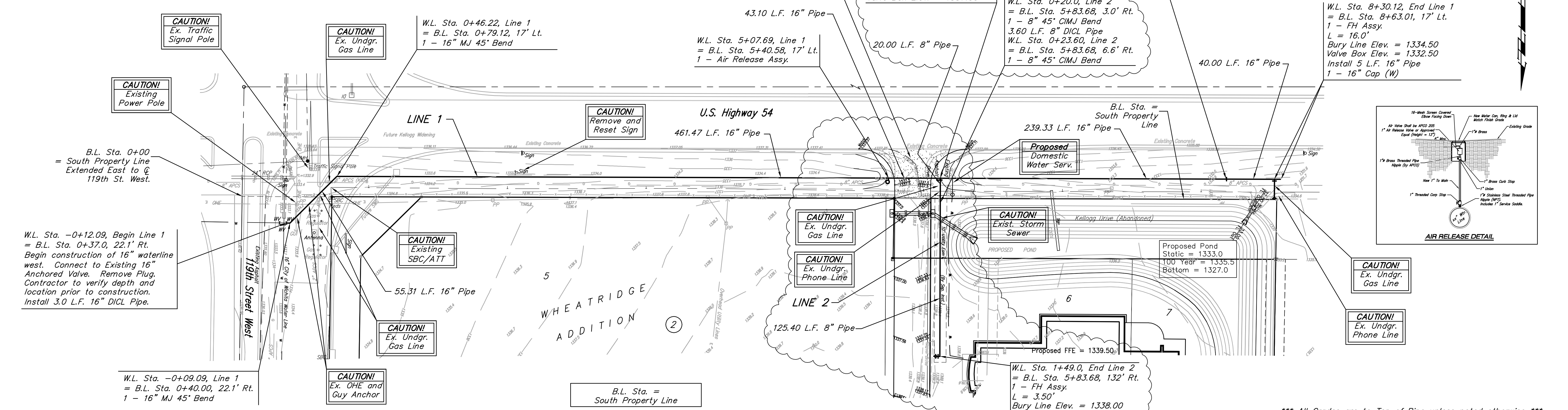


**BENCHMARK:**

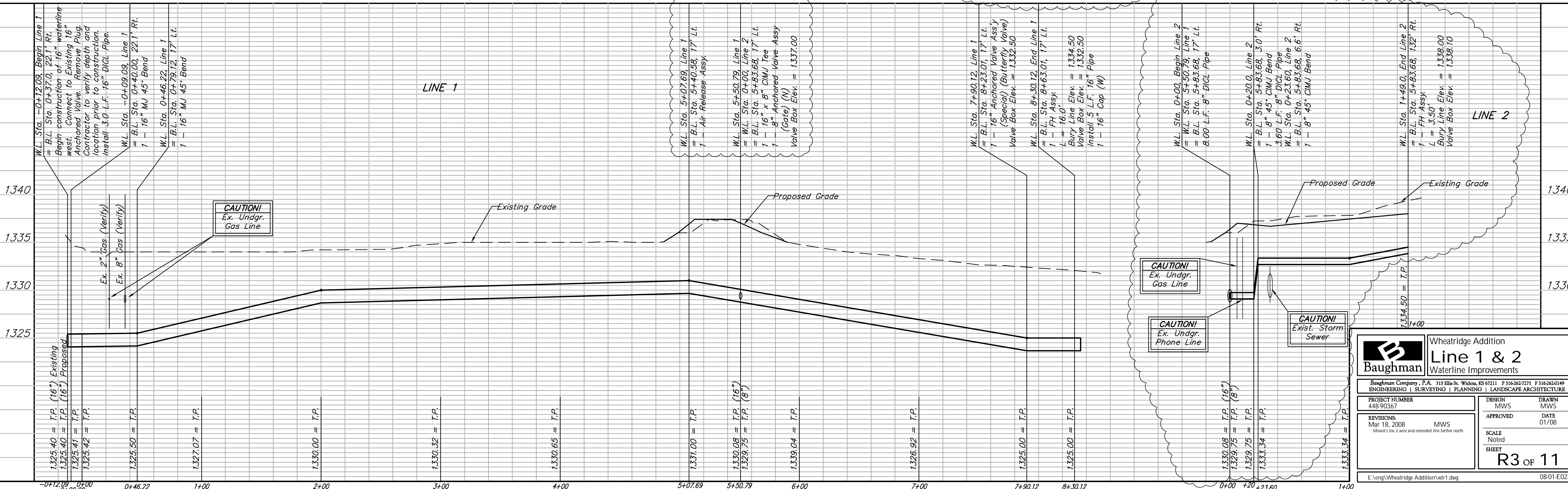
City Disc:  
City of Wichita Disc, 13 feet  
south and 85 feet east of  
Kellogg and 119th Street West.

Elev. = 1333.36

Scale: 1" = 40' Horizontal  
1" = 5' Vertical  
• = Iron



\*\*\* All Grades are to Top of Pipe unless noted otherwise \*\*\*



<p><b>Baughman</b></p>		Wheatridge Addition	
		Line 1 & 2 Waterline Improvements	
<p>Baughman Company, P.A. 315 Ella St. Wichita, KS 67211 P 316-262-7271 F 316-262-0149 ENGINEERING   SURVEYING   PLANNING   LANDSCAPE ARCHITECTURE</p>			
PROJECT NUMBER 448-90367	DESIGN MWS	DRAWN MWS	DATE 01/08
REVISIONS: Mar 18, 2008 MWS Moved Line 2 west and extended line farther north	APPROVED	SCALE Noted	SHEET
		<b>R3 OF 11</b>	
E:\eng\Wheatridge Addition\wtr1.dwg			08-01-E023